

For Sublease

\$15.55/SF NNN

Office Space

NAI Columbia



100 CORPORATE BLVD

WEST COLUMBIA, SC

100 CORPORATE BLVD is an approximately 17,800 square foot premier, office building in West Columbia just off of Interstate 26. Efficient layout featuring large private offices, collaborative work areas, and flexible configurations with the ability to subdivide.

PROPERTY FEATURES

- Move-in ready condition with high-quality, professional finishes throughout
- Ideal for corporate headquarters, professional services, or medical office users
- Prominent highway visibility offering exceptional exposure and branding opportunity
- Well-maintained property designed to support a variety of office users
- Conveniently located at 100 Corporate Blvd with easy access to major thoroughfares and surrounding amenities
- Abundance of parking for employees and visitors

CONTACT US



Jeff Hein, SIOR

D: 803.744.9825

C: 803.530.4723

jhein@naicolumbia.com



Hope Andrews

D: 803.744.9869

C: 803.960.1570

handrews@naicolumbia.com

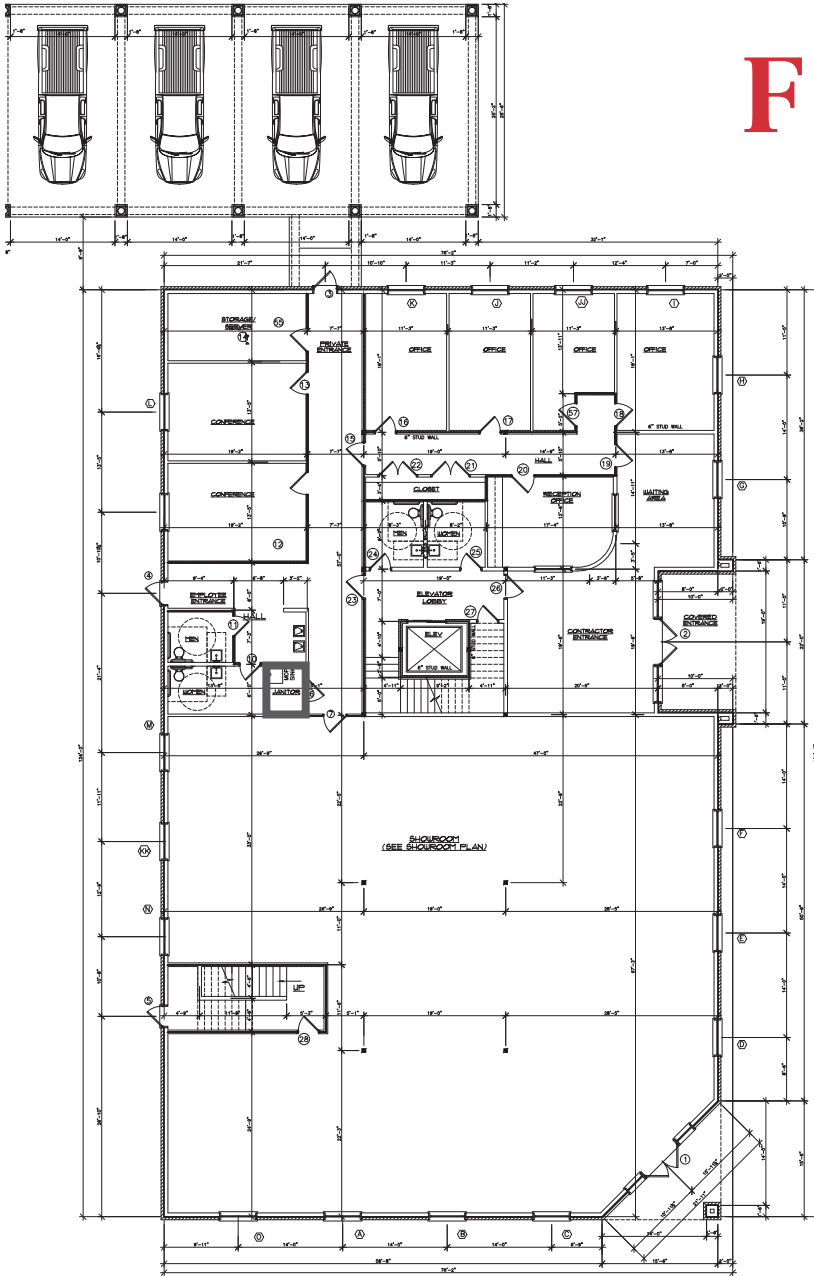


Will DuPree

D: 803.744.9822

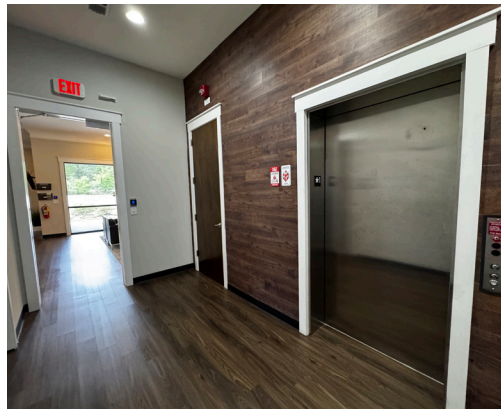
C: 803.239.1688

wdupree@naicolumbia.com

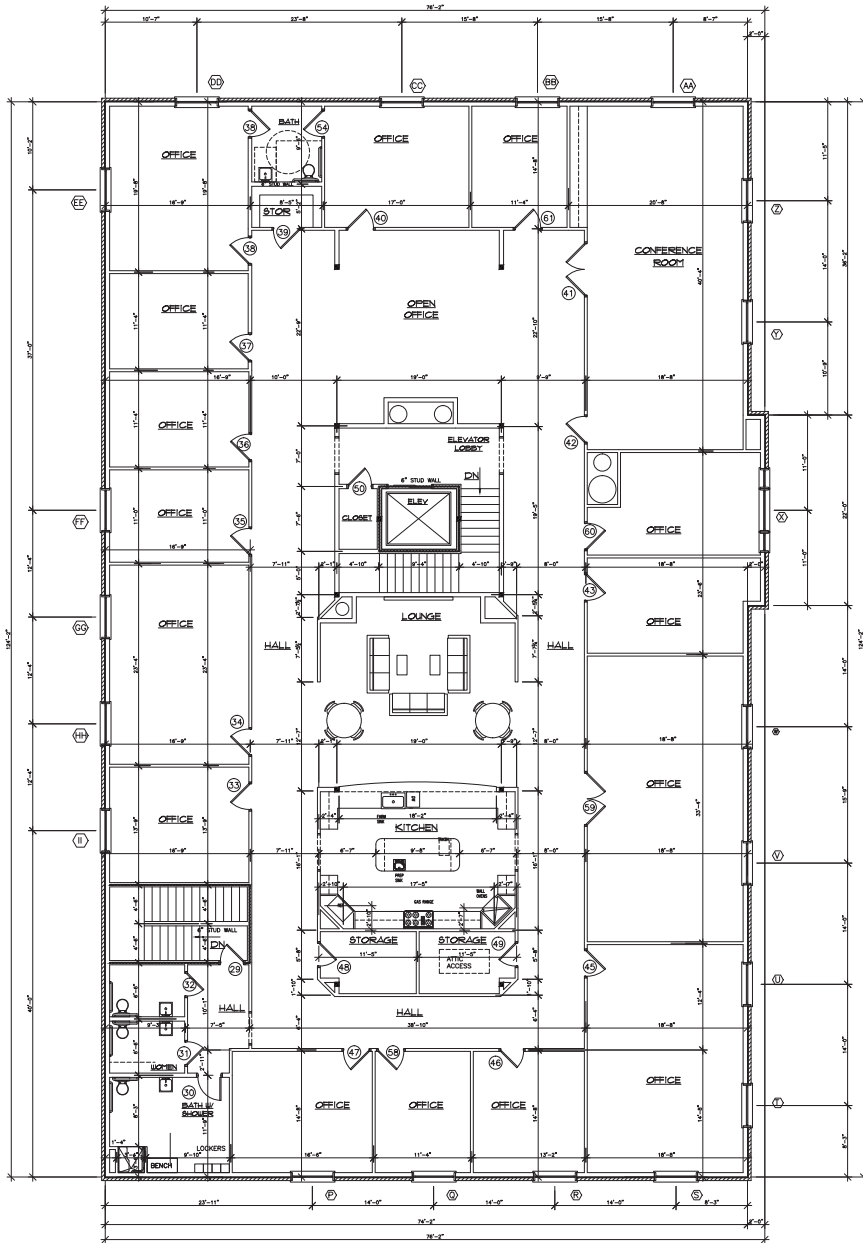


FIRST FLOOR

- ±8,900 Total Square Feet
- ±4,864 SF of Showroom
- Large Reception Area
- 4 Designated Offices
- 2 Conference Rooms
- 4 Restrooms
(2 Men/2 Women)



SECOND FLOOR



- ±8,900 Total Square Feet
- 14 offices (2 Executive Corner Offices)
- Large Conference Room
- Beautiful Kitchen and Lounge Area
- 2 Open Work Areas Ideal For Cubicles
- 4 Restrooms (1 Includes a Shower)



100 CORPORATE BLVD

WEST COLUMBIA, SOUTH CAROLINA



THE INFORMATION CONTAINED HEREIN HAS BEEN GIVEN TO US BY THE OWNER OF THE PROPERTY OR OTHER SOURCES WE DEEM RELIABLE. WE HAVE NO REASON TO DOUBT ITS ACCURACY, BUT WE DO NOT GUARANTEE IT. ALL INFORMATION SHOULD BE VERIFIED PRIOR TO PURCHASE OR LEASE.

1221 Main Street, Suite 1607
Columbia, South Carolina 29201
803.254.0100
www.naicolumbia.com

LOCATION MAP

100 Corporate Blvd, West Columbia, SC



LOCATION DETAILS

- **Immediate proximity to Interstate 26 (±86,100 VPD)** and key arterials providing strong regional connectivity and commuter access
- Located just across the Congaree River from Columbia, the state capital, offering **quick access to downtown, government offices, and the Vista district**
- Immediate proximity to **national retailers, restaurants, and daily service providers** supports employee convenience and client-facing operations