

SANTA FE

COMMERCE CENTER

4719 4720
4731 4750

S. SANTA FE CIR.
ENGLEWOOD, CO 80110



4750 S. SANTA FE CIR. | UNIT 8

WAREHOUSE & FLEX SPACE FOR LEASE

PROPERTY OVERVIEW

Unit Size: 1,000 SF	Clear Height: 14'
Office: 30%	Loading: One (1) Drive In Door 10' x 10'
Available: Feb 1st, 2026	Parking: 1.96:1,000
Base Rate: \$1,500.00/month	Zoning: I-1
Op. Exp. (2026): \$574.17/month	YOC: 2001
Total Rent: \$2,074.17/month	

HIGHLIGHTS

- Santa Fe Frontage / Visibility with excellent access to South Metro Denver
- Functional Unit Layout
- Drive-In Loading
- Favorable Neighborhood Demographics
- Abundant Retail Amenities in Area
- Business Park Atmosphere

T.J. SMITH, SIOR
+1 303 283 4576
tj.smith@colliers.com

NICK RICE
+1 720 833 4620
nick.rice@colliers.com

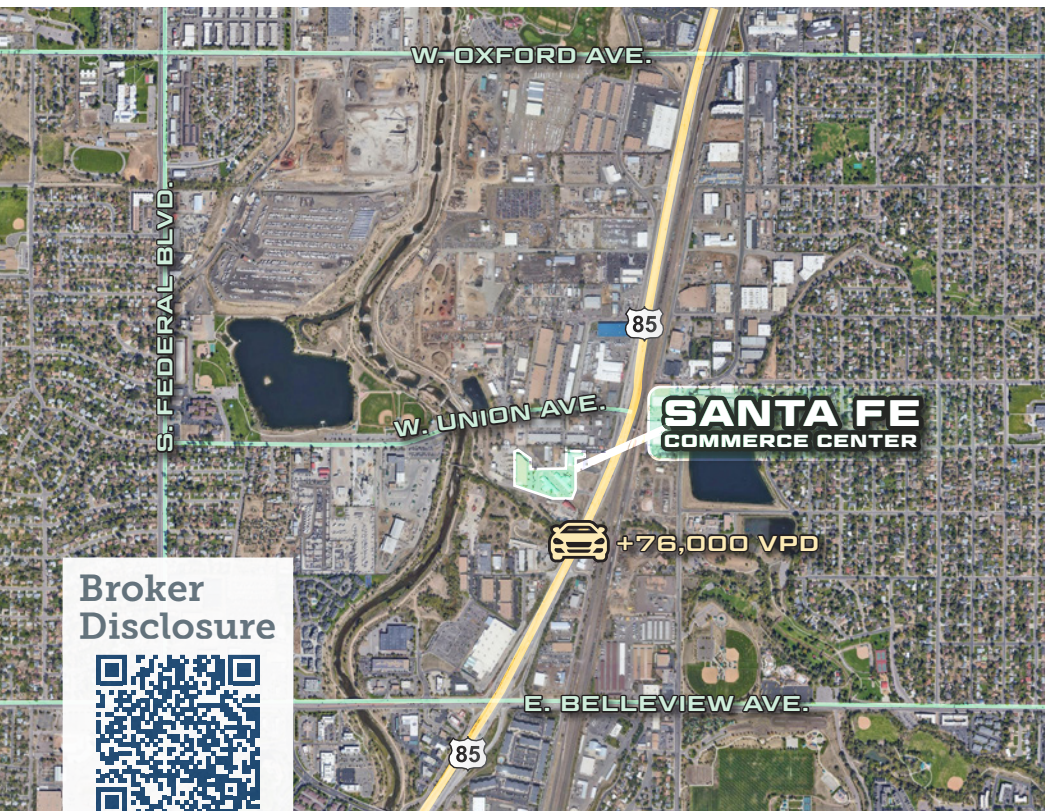
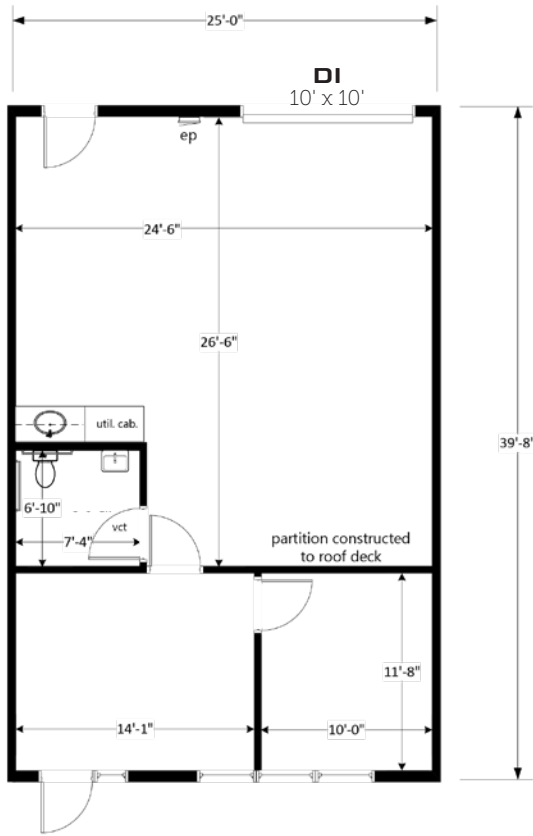
NICHOLAS NASHARR
+1 303 283 4563
nicholas.nasharr@colliers.com

NICOLA
WEALTH

Colliers

4750 S. SANTA FE CIR. | UNIT 8

1,000 SF



Broker Disclosure



CONTACT US:

T.J. SMITH, SIOR

+1 303 283 4576

tj.smith@colliers.com

NICK RICE

+1 720 833 4620

nick.rice@colliers.com

NICHOLAS NASHARR

+1 303 283 4563

nicholas.nasharr@colliers.com



COLLIERS

4643 S. Ulster Street, Suite 1000

Denver, CO 80237

P: +1 303 745 5800

F: +1 303 745 5888

Copyright © 2021 Colliers International. Information herein has been obtained from sources deemed reliable, however its accuracy cannot be guaranteed. The user is required to conduct their own due diligence and verification.

