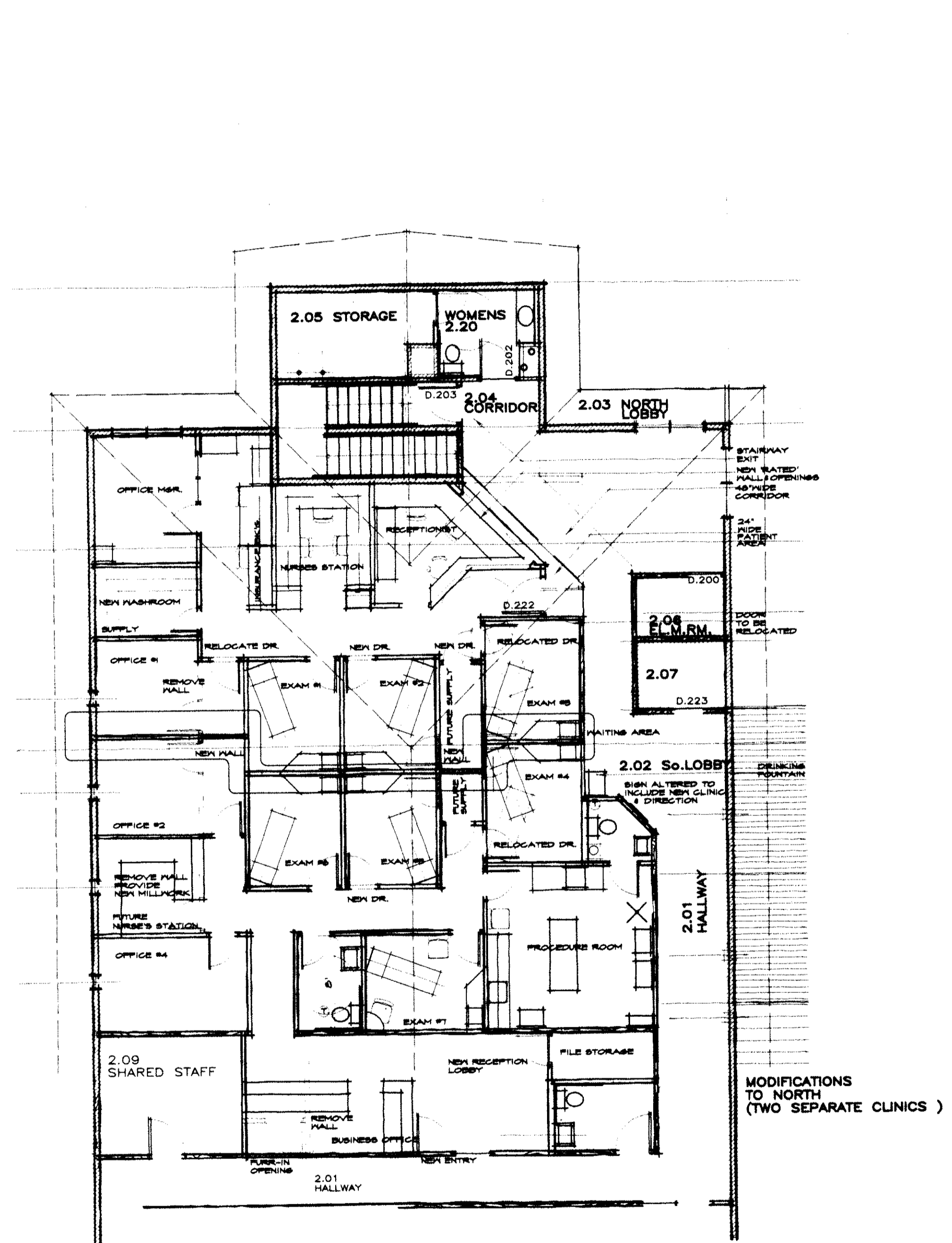
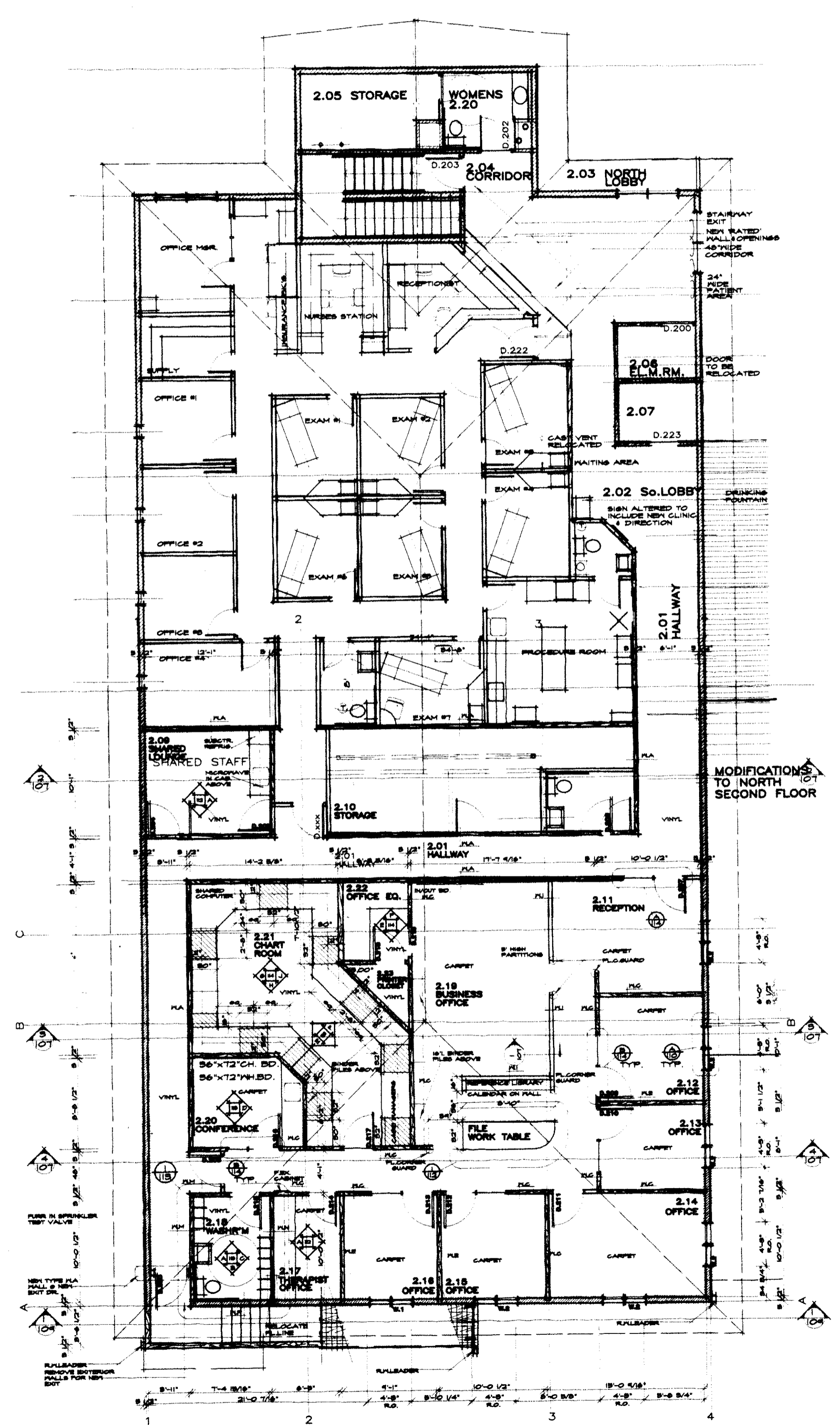


DRAWING STATUS:
 PRELIMINARY
 DESIGN DEVELOPMENT
 RELEASED FOR PRELIMINARY CONSTRUCTION REVIEW
 NOT FOR CONSTRUCTION
 RELEASED FOR CONSTRUCTION DATE: _____



EXPANSION OPTIONS

- FUTURE EXPANSION NOTES:**
1. GENERAL NOTE - THIS SHEET PROVIDES GENERAL INFORMATION ANTICIPATING FUTURE EXPANSION AND/OR ALTERATION. THERE ARE NO GUARANTEES THAT FUTURE EXPANSION SHALL BE EXACTLY AS ILLUSTRATED.
 2. THERE ARE TWO DIRECTIONS THAT EXPANSION SHALL OCCUR: A. EXPANSION OF HOME HEALTH IN THE OFFICE AND PRELIMINARY EAST-WEST CORRIDOR SHALL BE ADJACENT TO THESE HALLWAYS AND HALLWAYS. CURRENT STITCHES ARE ADJACENT TO THESE HALLWAYS. FUTURE STITCHES SHALL BE ADJACENT TO THESE HALLWAYS. B. ALTERATION OF THE NORTH DOCTORS OFFICE OCCURS (THE FLOOR CONTAINED IN THE NORTH DOCTORS OFFICE). IN THE EVENT ALTERATION OF THE NORTH DOCTORS OFFICE OCCURS, THE EXAMINATION ROOMS SHOULD BE RELOCATED OFF SHARABLE THE CURRENT PLAN TO BE DIVIDED INTO TWO SEPARATE CLINICS.
 3. WORK TO ACCOMMODATE FUTURE ALTERATION: A. THE DRINKING FOUNTAIN BETWEEN EXAMINATION ROOMS SHALL BE RATED AND RUN CONTINUOUSLY UP TO THE UNDERSIDE OF THE RATED CEILING. THE FOUNTAIN SHALL EXTEND ABOVE CURRENT FLOOR AND BEYOND. THESE HALLWAYS SHALL BE LEFT OPEN TO BE FINISHED IN AT A LATER DATE.



HOME HEALTH OFFICE PLAN

PROPOSED OFFICE PLAN FOR ASSOCIATED PROFESSIONALS AT THE NORTH VALLEY HOSPITAL

KEN WILLIAMS ASSOCIATED PROFESSIONALS
 ARCHITECTS
 1000 WEST 10TH AVENUE
 DENVER, CO 80202
 TEL: 303.733.1111
 FAX: 303.733.1112
 PROJECT NUMBER: 8802
 DATE: 12 FEB 98
 DRAWN BY: KJW
 CHECKED BY: KJW
 SCALE: VARIOUS
 DRAWING FILE: 8802_103.dwg
 OF 103