

1515 Fresno Avenue

Stockton, CA 95206

For Lease

Bldg 12: ±75,000 SF
Yard: ±16 acre, fully secured with LED lighting
divisible (±464 total trailer positions)

*Yard can be leased separately

*Proximity to Port of Stockton  & I-5 



MIKE GOLDSTEIN, SIOR

Vice Chair -
Executive Managing Director
CA License No. 01319234
michael.goldstein@colliers.com
+1 209 475 5106

RYAN MCSHANE, SIOR

Vice Chair
CA License No. 01295796
ryan.mcshane@colliers.com
+1 209 483 9851

WES WIDMER, SIOR

Executive Vice President
CA License No. 01315686
wes.widmer@colliers.com
+1 209 598 0331

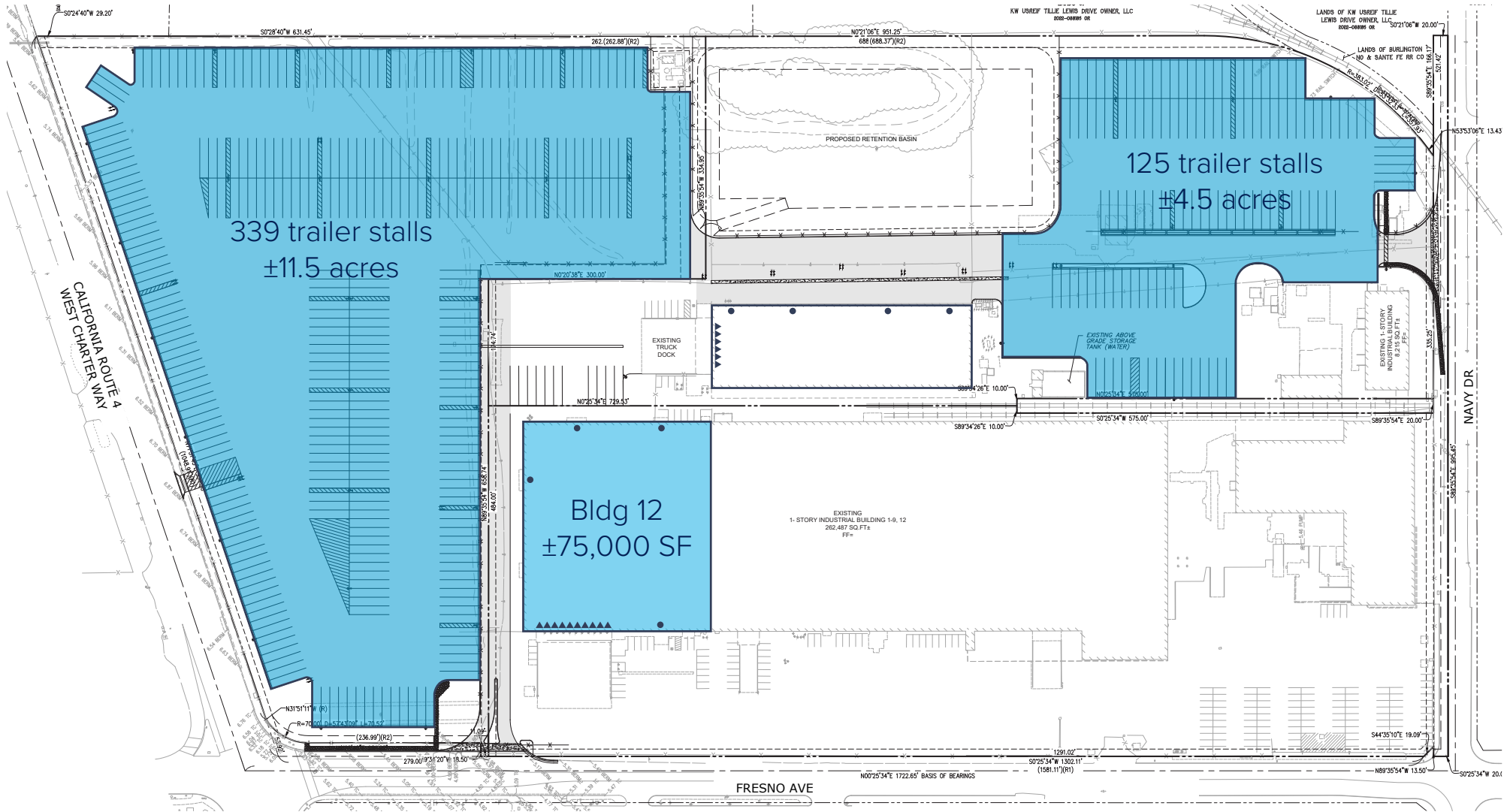
ALEX HOECK, SIOR

Executive Vice President
CA License No. 01943853
alex.hoeck@colliers.com
+1 209 851 1191



1515 Fresno Avenue

Stockton, CA 95206



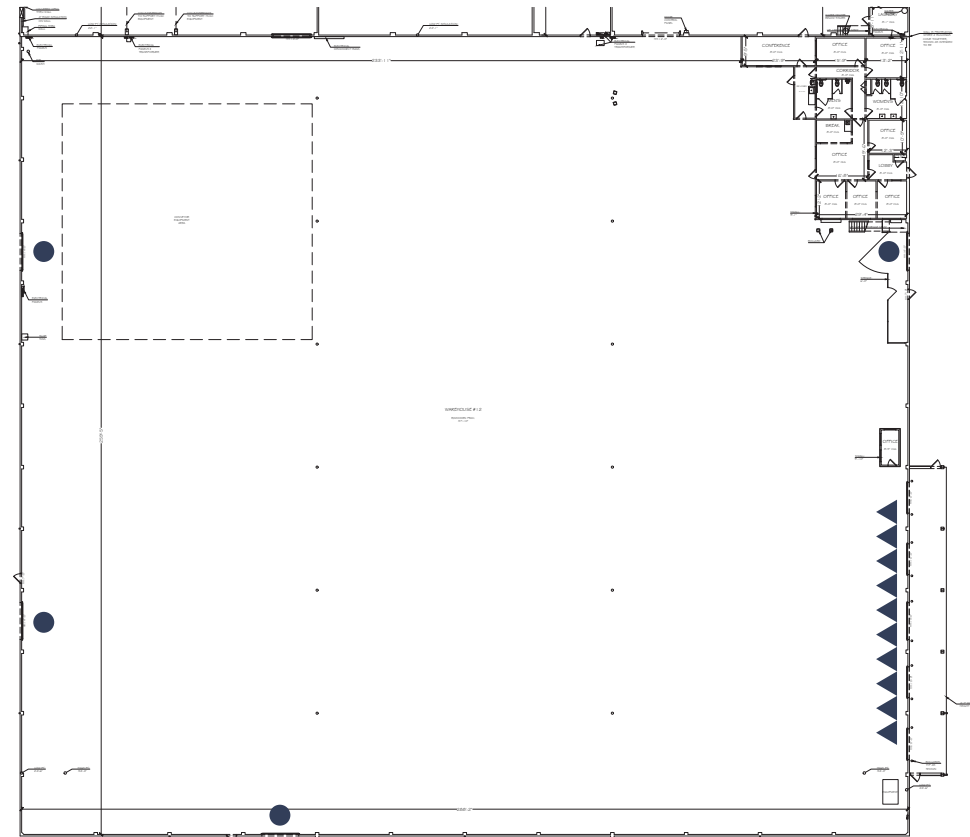
1515 Fresno Avenue, Bldg 12

Stockton, CA 95206

BUILDING SPECIFICATIONS

Building SF:	±75,000 SF Warehouse
Acreage:	±16 acres divisible to ±2.0 acres
Office SF:	±2,000 SF
Loading:	10 dock high loading doors 4 grade level roll up doors
Parking:	Ample including yard
Yard:	Newly paved, fenced, striped and lit
Trailer Parking:	Up to 464 trailer stalls
Construction Type:	Concrete tilt-up
Warehouse Lighting:	LED
Column Spacing:	±96' x 40'
Clear Height:	24'
Sprinklers:	Yes
Indicated Power:	200 amps, 277,480V, 3-phase
Zoning:	I-G, General Industrial City of Stockton
Electric:	PG&E

Contact Brokers for Pricing



- Grade Level Loading
- ▲ Dock Loading

PROPERTY PHOTOS

Colliers

1515 Fresno Avenue

Stockton, CA 95206



1515 Fresno Avenue

Stockton, CA 95206

City	Distance (mi)
Sacramento	51
Oakland	73
San Jose	75
San Francisco	82
Fresno	128
Reno	184
Los Angeles	343
Las Vegas	523
Portland	627
Phoenix	714
Salt Lake City	703
Seattle	801
Denver	1,224

Airport	Distance (mi)
Stockton Metro Airport	7
Oakland Int'l Airport	66
Sacramento Int'l Airport	59
San Jose Int'l Airport	70
San Francisco Int'l Airport	84

Rail	Distance (mi)
BNSF Intermodal - Stockton	8
UP Intermodal - Manteca	8

Port	Distance (mi)
Port of Stockton	8
Port of West Sacramento	52
Port of Oakland	74
Port of San Francisco	81
Port of LA & Long Beach	358
Port of Seattle	802

