

For Sale

22 Berkeley Rd, Carlton GA 30627

Dollar General Store

NNN



Anita Risberg, CCIM
5200 SW Meadows Rd, Ste 200
Lake Oswego OR 97035
E: anita@omninvestcire.com
C: 503-559-8513

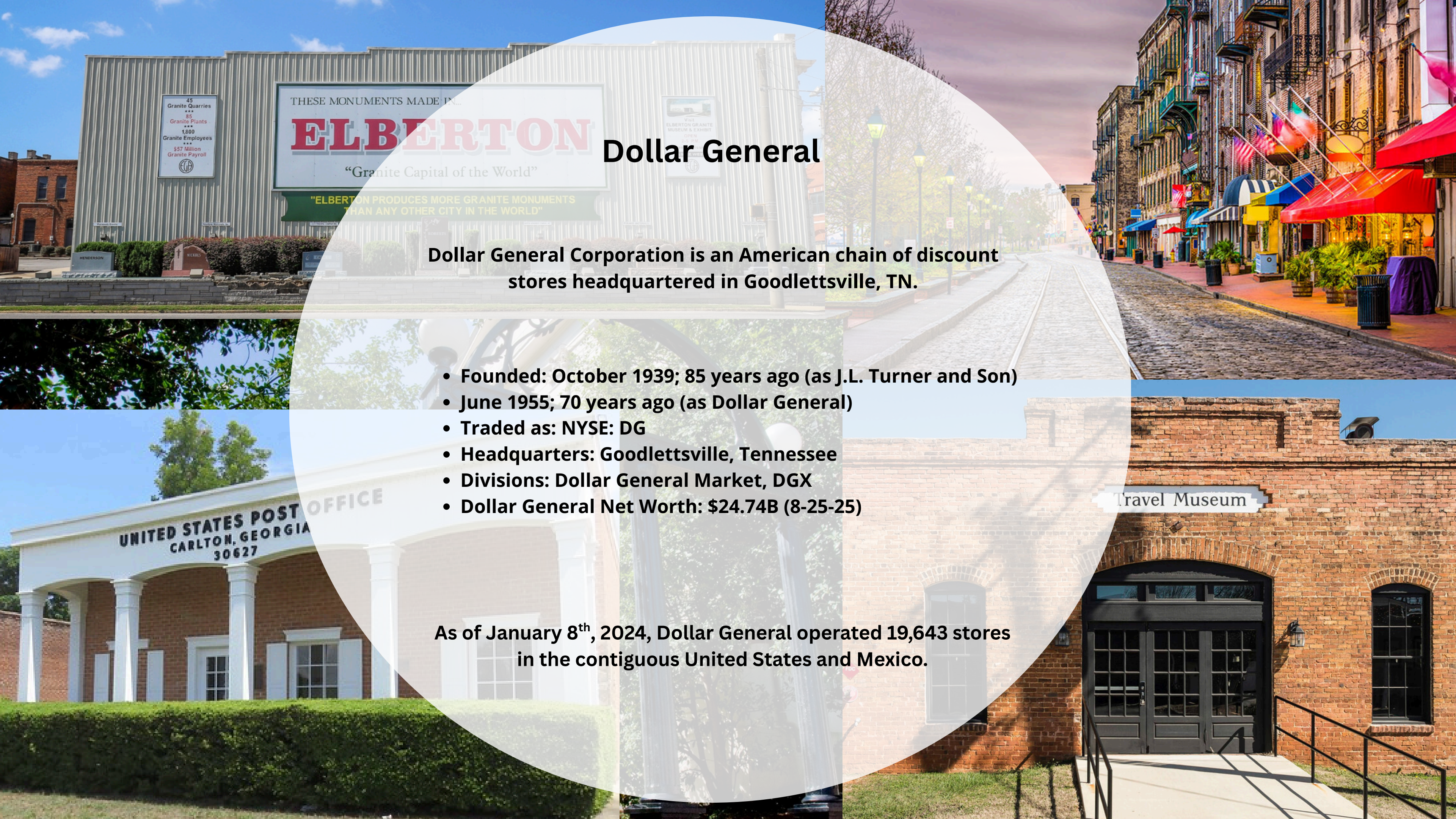
Broker of Record:
Brian Brockman-Broker
Bang Realty Inc-Georgia Inc
GA License #: 378952
bor@bangrealty.com
513-898-1551

Dollar General

22 Berkeley Road

Carlton GA 30627

- Sales Price: \$1,130,000.00
- Cap Rate: 7%
- Year Built: 2018
- Acres: 1.77
- Building Sq Ft: 7489
- 29 Parking Spaces
- NOI \$79,080.00
- NNN Lease Term: June 2018 to June 2033
- Remaining Term: 8 Years
- 5/5 Year Renewals with Rare 10% Increases
- Madison County GA
- Annual Property Taxes Reimbursed by Tenant to Landlord
- High Traffic Intersection
- Location: Between Comer and Carlton GA
- Located at the intersection of Old SR-72 and Berkeley Road



45
Granite Quarries
85
Granite Plants
1,800
Granite Employees
\$57 Million
Granite Payroll

THESE MONUMENTS MADE IN...
ELBERTON
"Granite Capital of the World"

Dollar General

Dollar General Corporation is an American chain of discount stores headquartered in Goodlettsville, TN.

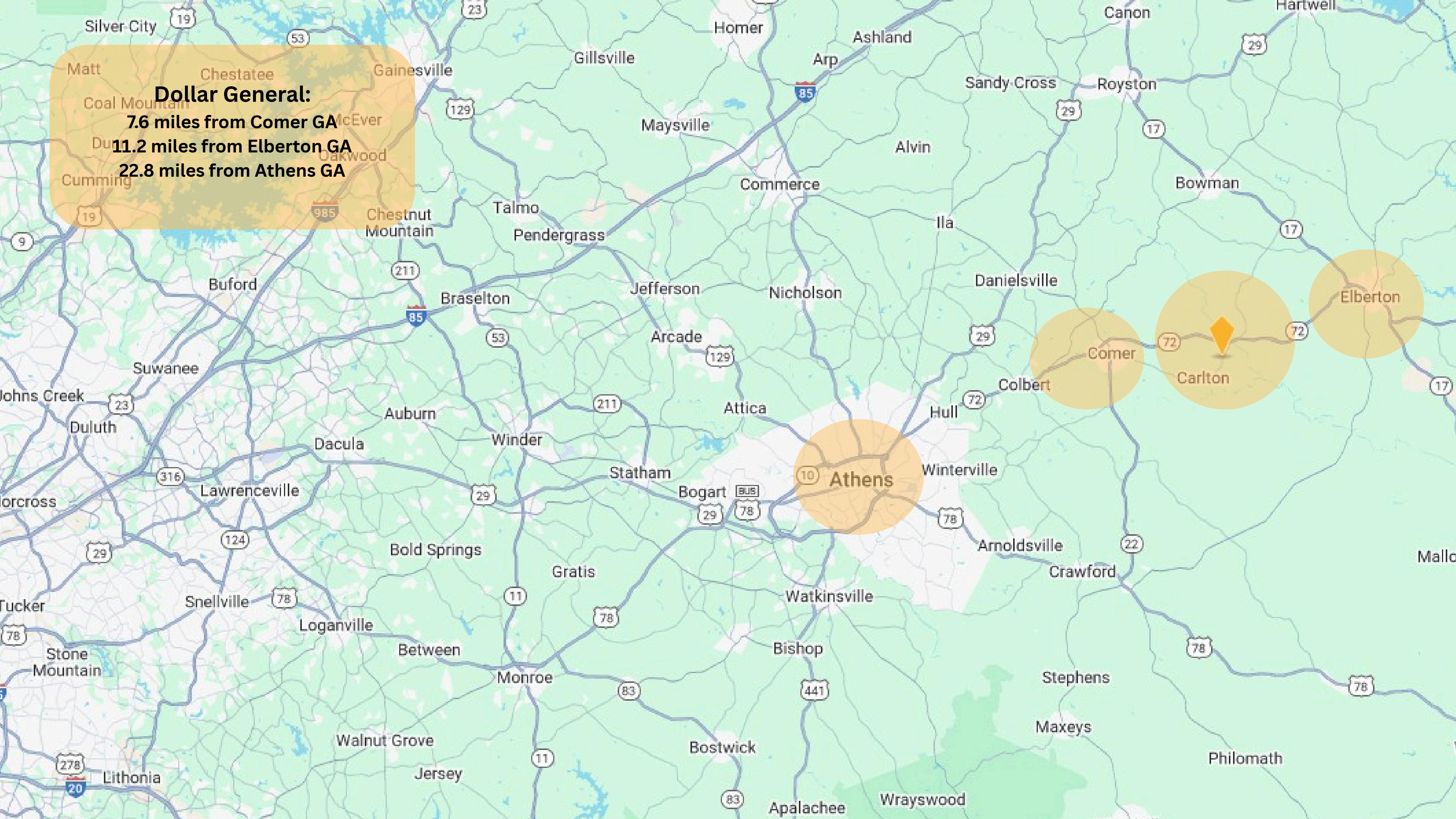
- **Founded: October 1939; 85 years ago (as J.L. Turner and Son)**
- **June 1955; 70 years ago (as Dollar General)**
- **Traded as: NYSE: DG**
- **Headquarters: Goodlettsville, Tennessee**
- **Divisions: Dollar General Market, DGX**
- **Dollar General Net Worth: \$24.74B (8-25-25)**

As of January 8th, 2024, Dollar General operated 19,643 stores in the contiguous United States and Mexico.

UNITED STATES POST OFFICE
CARLTON, GEORGIA
30627

Travel Museum

Dollar General:
7.6 miles from Comer GA
11.2 miles from Elberton GA
22.8 miles from Athens GA





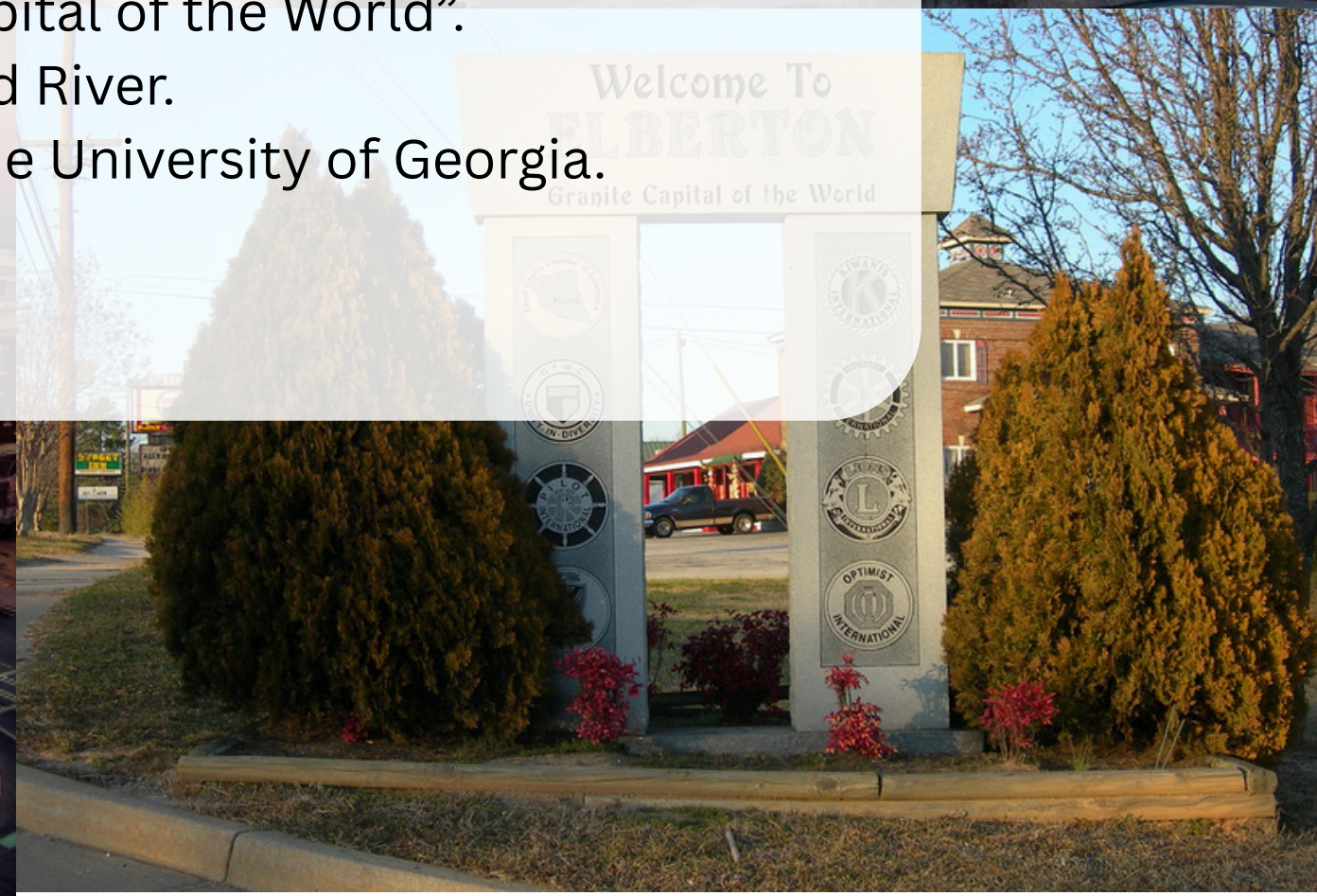
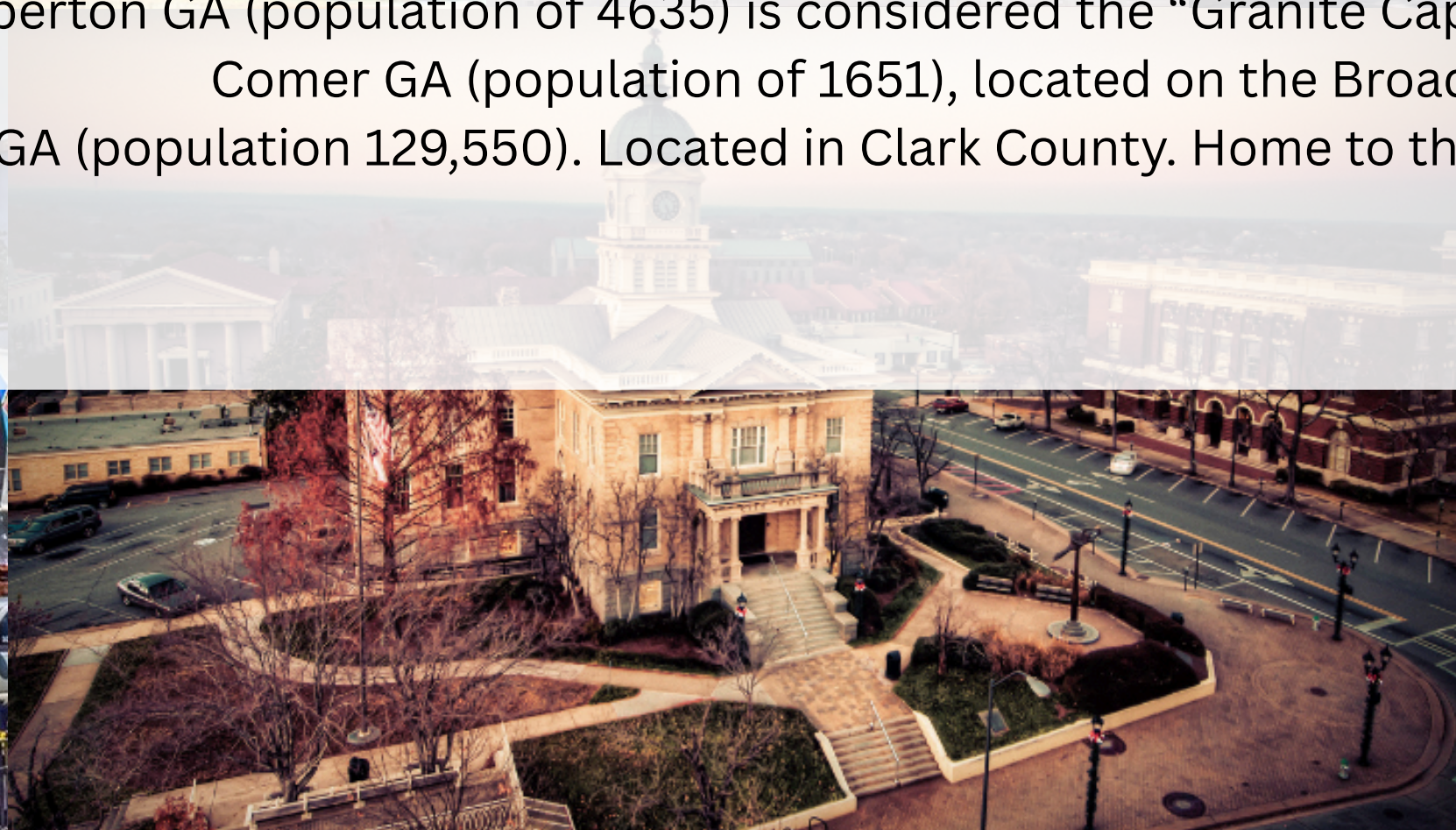
Charming Communities in Madison and Clark County GA

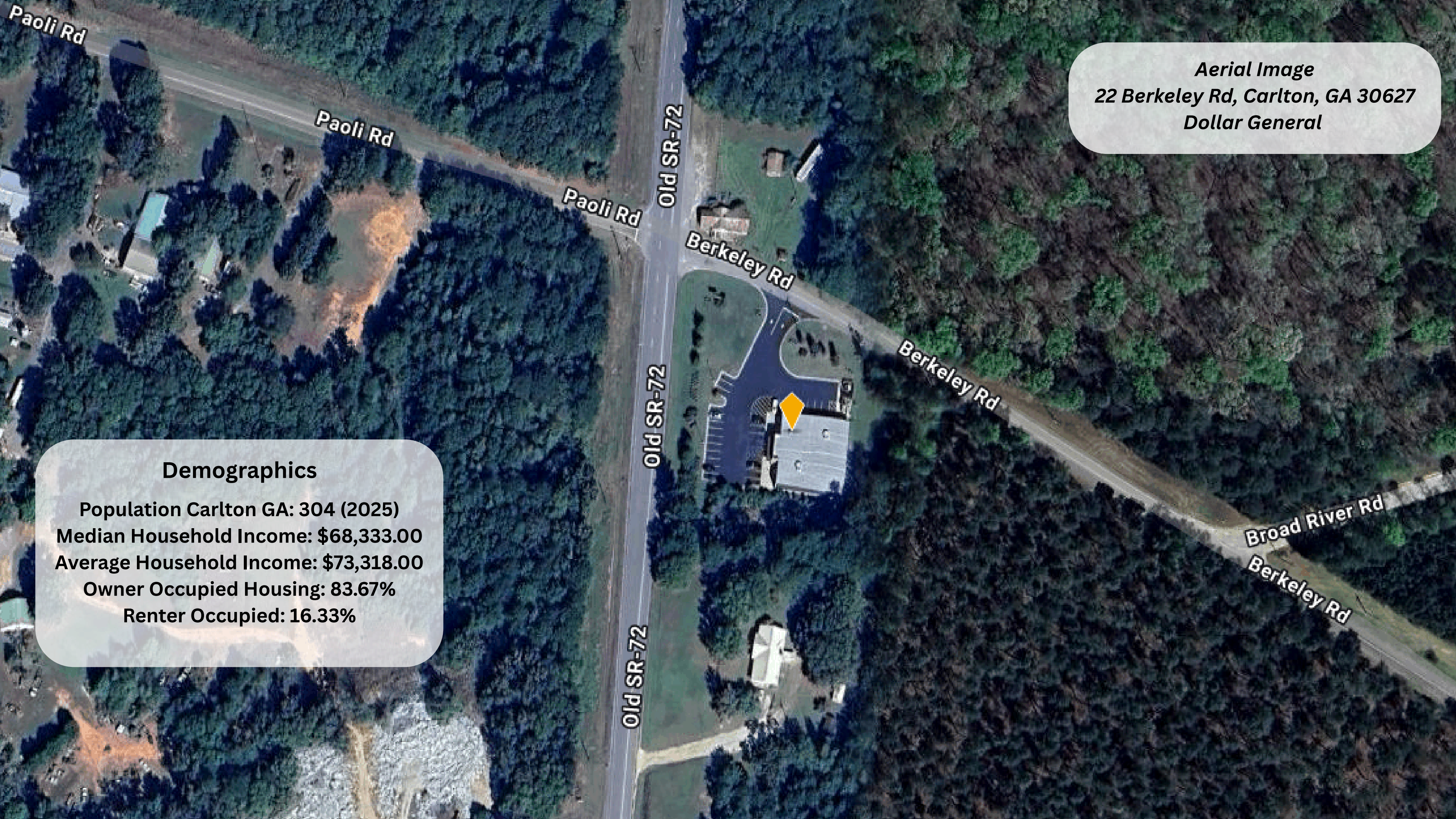
Carlton GA (population of 304) is located in Madison County (population of 32,771).

Elberton GA (population of 4635) is considered the “Granite Capital of the World”.

Comer GA (population of 1651), located on the Broad River.

Athens GA (population 129,550). Located in Clark County. Home to the University of Georgia.





Aerial Image
22 Berkeley Rd, Carlton, GA 30627
Dollar General

Demographics

Population Carlton GA: 304 (2025)
Median Household Income: \$68,333.00
Average Household Income: \$73,318.00
Owner Occupied Housing: 83.67%
Renter Occupied: 16.33%

Confidentiality & Disclaimer

All materials and information received or derived and information received or derived from OmniVest, LLC its directors, officers, agents, advisors, affiliates and/or any third party sources are provided without representation or warranty as to completeness, veracity, or accuracy, condition of the property, compliance or lack of compliance with applicable governmental requirements, developability or suitability, financial performance of the property, projected financial performance of the property for any party's intended use or any and all other matters.

Neither OmniVest, LLC its directors, officers, agents, advisors, or affiliates makes any representation or warranty, express or implied, as to accuracy or completeness of the any materials or information provided, derived, or received. Materials and information from any source, whether written or verbal, that may be furnished for review are not a substitute for a party's active conduct of its own due diligence to determine these and other matters of significance to such party. OmniVest, LLC will not investigate or verify any such matters or conduct due diligence for a party unless otherwise agreed in writing.

EACH PARTY SHALL CONDUCT ITS OWN INDEPENDENT INVESTIGATION AND DUE DILIGENCE.

Any party contemplating or under contract or in escrow for a transaction is urged to verify all information and to conduct their own inspections and investigations including through appropriate third-party independent professionals selected by such party. All financial data should be verified by the party including by obtaining and reading applicable documents and reports and consulting appropriate independent professionals. OmniVest, LLC makes no warranties and/or representations regarding the veracity, completeness, or relevance of any financial data or assumptions. OmniVest, LLC does not serve as a financial advisor to any party regarding any proposed transaction. All data and assumptions regarding financial performance, including that used for financial modeling purposes, may differ from actual data or performance. Any estimates of market rents and/or projected rents that may be provided to a party do not necessarily mean that rents can be established at or increased to that level. Parties must evaluate any applicable contractual and governmental limitations as well as market conditions, vacancy factors and other issues in order to determine rents from or for the property.

Legal questions should be discussed by the party with an attorney. Tax questions should be discussed by the party with a certified public accountant or tax attorney. Title questions should be discussed by the party with a title officer or attorney. Questions regarding the condition of the property and whether the property complies with applicable governmental requirements should be discussed by the party with appropriate engineers, architects, contractors, other consultants and governmental agencies. All properties and services are marketed by OmniVest, LLC in compliance with all applicable fair housing and equal opportunity laws.



Anita Risberg, CCIM
Principal Broker
anita@omninvestcire.com
503-559-8513

OR License # 870800111
WA License # 25706
NC License # 351383

Main Office: 5200 SW Meadows Rd, Suite 200
Lake Oswego OR 97035



Broker of Record:
Brian Brockman-Broker
Bang Realty Inc-Georgia Inc
GA License #: 378952
bor@bangrealty.com
513-898-1551

Advisor Bio

Professional Background

Anita Risberg, CCIM has been recognized by her peers for her service and professionalism. Having successfully negotiated all types of commercial and investment real estate since 1987, much of Anita's brokerage practice over the last twenty-five years has been centered on multifamily and investment property acquisitions and dispositions. Her completed transactions total over \$995,000,000.00. Serving local, regional and national clients across the Pacific Northwest.

She has worked on a wide range of projects that include valuations for attorneys, dispositions for banks, assemblages, development and redevelopment of existing properties. Anita has cultivated a strong regional network of relationships and exclusive partnerships and is an active liaison with other top brokers/agents. One of Anita's greatest strengths is her ability to prospect for off-market opportunities.

Memberships & Affiliations

Served as the 2017 Regional Vice President for Region 1 through the CCIM Institute. She is a member of CCIM Institute and the National Association of Realtors. 2010 Chapter President Oregon/SW Washington CCIM Chapter. WVCR 2009 Realtor of the year. 2017 Graduate of the JWL leadership training through the CCIM Institute in Chicago. CCIM Designation June 2000.

Education

Bachelors Degree in Business from Mankato State University and Western Oregon University.
CCIM Designation, CCIM Institute Chicago, Ill.

2017 Graduate of the JWL leadership training through the CCIM Institute.