

5200-5230 W. Roosevelt Road

INDUSTRIAL BUILDING FOR LEASE

5200-5230 W Roosevelt Rd, Chicago, IL 60644

[Property Website](#)

±129,000 SF
Available

Divisible to
±59,890 SF

Fenced-in
Parking Lot

Professionally
Owned & Managed

**BROKER INCENTIVE: \$500
FOR ANY QUALIFIED RFP**



Joe Karmin, SIOR

Executive Vice President
(847) 287-4567
joe.karmin@transwestern.com

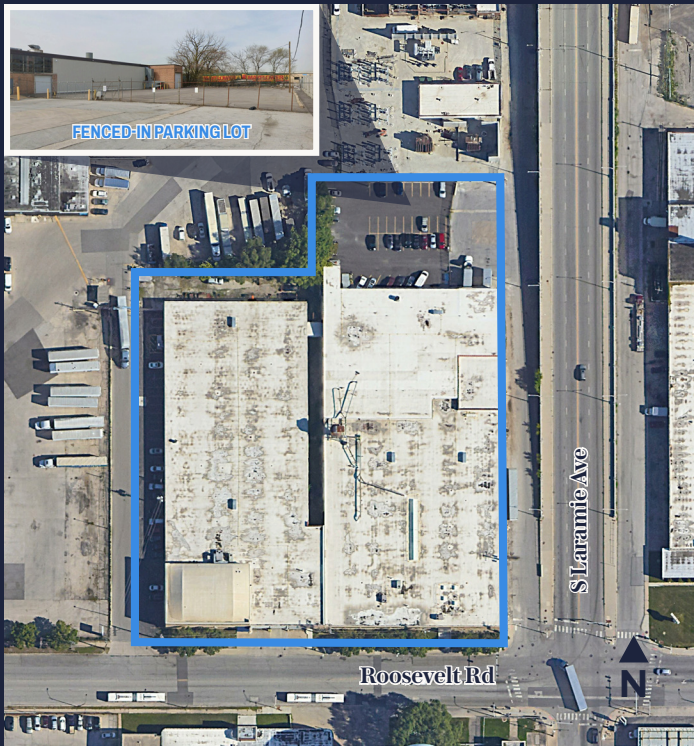
Justin Lerner, SIOR

Executive Vice President
(847) 858-5303
justin.lerner@transwestern.com

Ross Lehrman

Senior Vice President
(847) 946-4602
ross.lehrman@transwestern.com

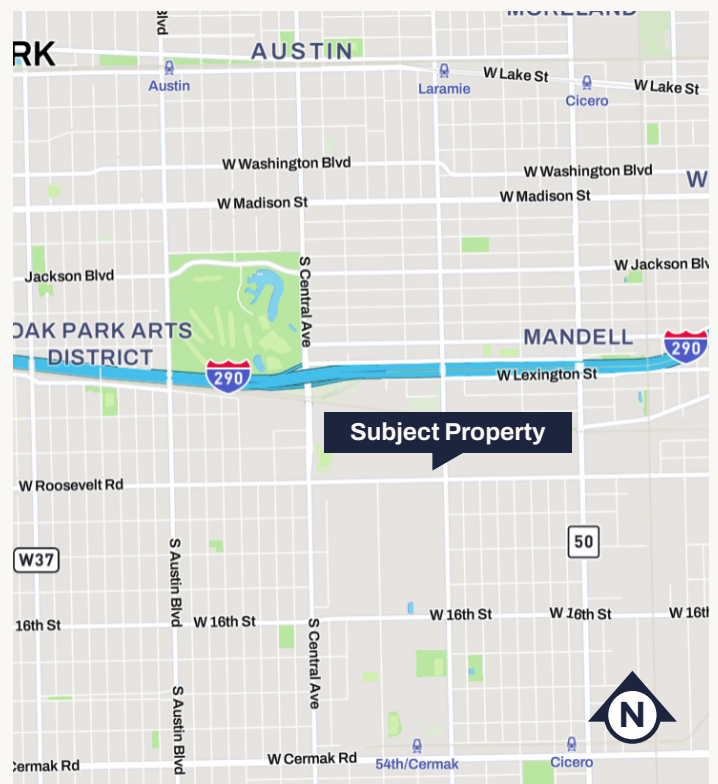
The information provided herein was obtained from sources believed reliable; however, Transwestern makes no guarantees, warranties, or representations as to the completeness or accuracy thereof. The presentation of this information is submitted subject to errors, omissions, change of price or conditions, prior sale or lease, or withdrawal without notice. Copyright © 2026 Transwestern.



Property Highlights

- **BROKER INCENTIVE: \$500 FOR ANY QUALIFIED RFP**
- Divisible to ±59,890 SF (Unit 5230) and ±69,110 SF (Unit 5200)
- Excellent loading access
- Heavy power
- Fenced-in parking lot
- Less than one mile from the 4-way interchange at I-290 and Central Avenue
- Less than 15 minutes from Downtown Chicago
- ±6 miles from Midway Airport
- Professionally owned and managed building

BUILDING SIZE	±129,000 SF
LAND AREA	±4.13 AC
DIVISIBLE TO	±59,890 SF
OFFICE SIZE	±12,834 SF
CEILING HEIGHT	12' - 18'
LOADING	4 Ext / 3 Int / 2 DID
POWER	2000A 480V 3PH
PARKING	±75 Cars
ZONING	M2-2
CONSTRUCTION	Masonry
LEASE RATE	\$7.95 PSF MG



Joe Karmin, SIOR

Executive Vice President
(847) 287-4567
joe.karmin@transwestern.com

Justin Lerner, SIOR

Executive Vice President
(847) 858-5303
justin.lerner@transwestern.com

Ross Lehrman

Senior Vice President
(847) 946-4602
ross.lehrman@transwestern.com



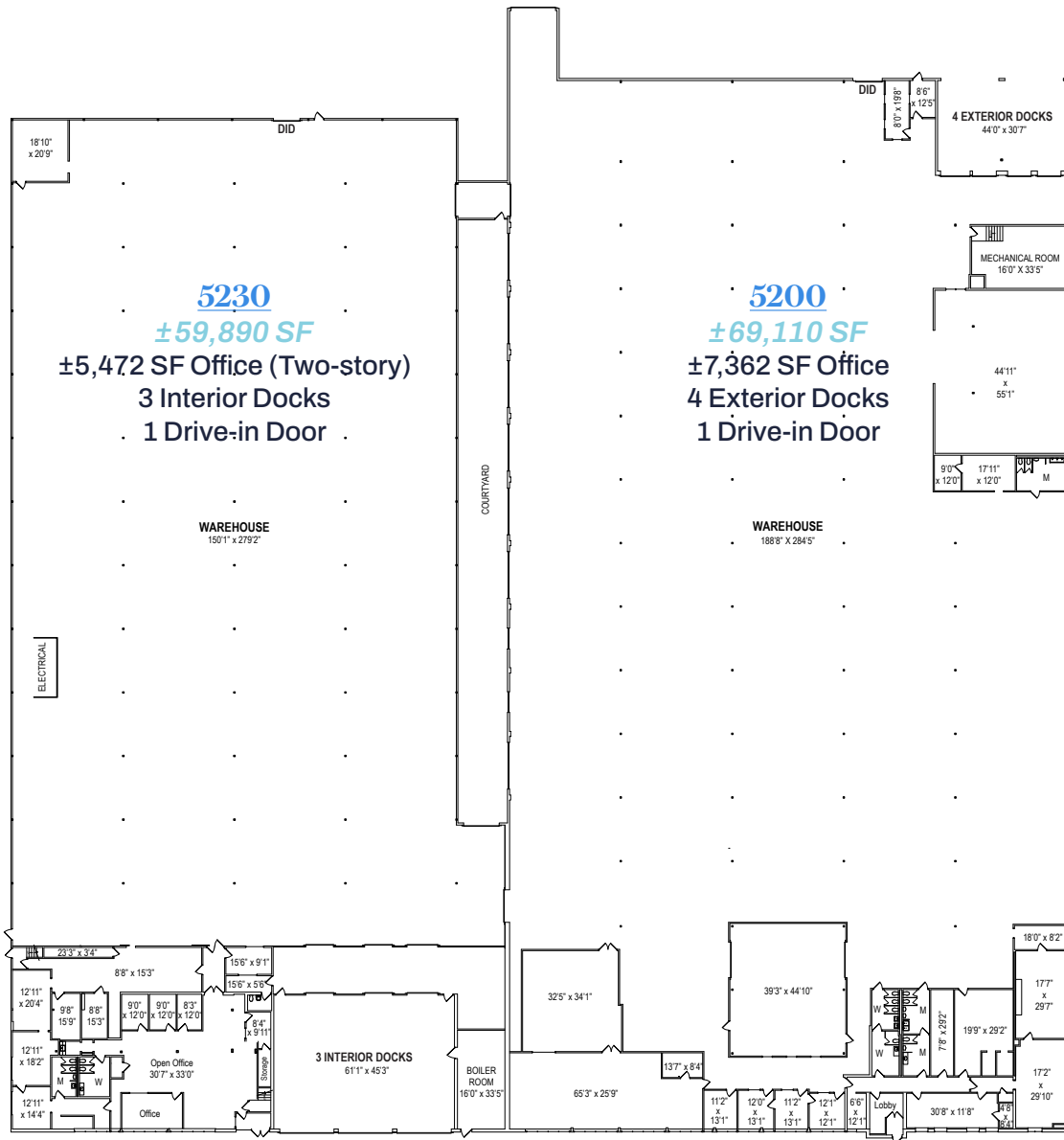
The information provided herein was obtained from sources believed reliable; however, Transwestern makes no guarantees, warranties, or representations as to the completeness or accuracy thereof. The presentation of this information is submitted subject to errors, omissions, change of price or conditions, prior sale or lease, or withdrawal without notice. Copyright © 2026 Transwestern.

5200-5230 W. Roosevelt Road

INDUSTRIAL BUILDING FOR LEASE

5200-5230 W Roosevelt Rd, Chicago, IL 60644
[Property Website](#)

**BROKER INCENTIVE: \$500
 FOR ANY QUALIFIED RFP**



[Click Here
 for 5230's
 Office Plan](#)

[Click Here
 for 5200's
 Office Plan](#)

BUILDING LAYOUT

Joe Karmin, SIOR
 Executive Vice President
 (847) 287-4567
 joe.karmin@transwestern.com

Justin Lerner, SIOR
 Executive Vice President
 (847) 858-5303
 justin.lerner@transwestern.com

Ross Lehrman
 Senior Vice President
 (847) 946-4602
 ross.lehrman@transwestern.com

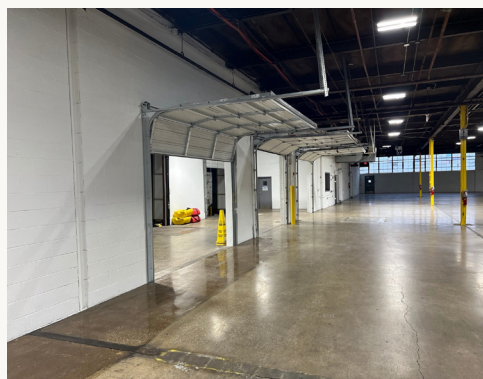
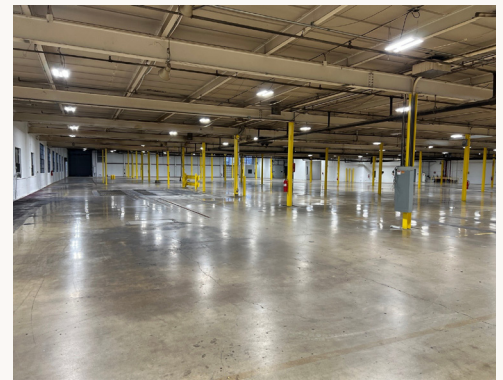
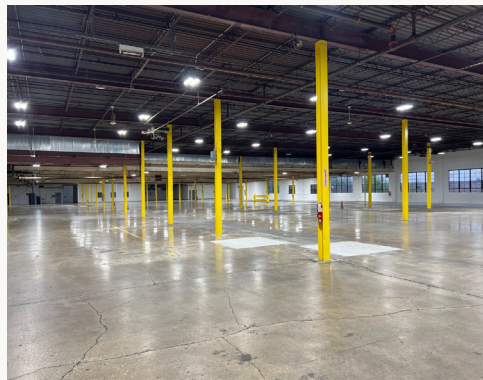
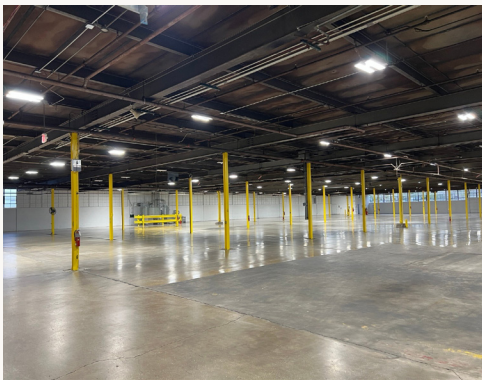
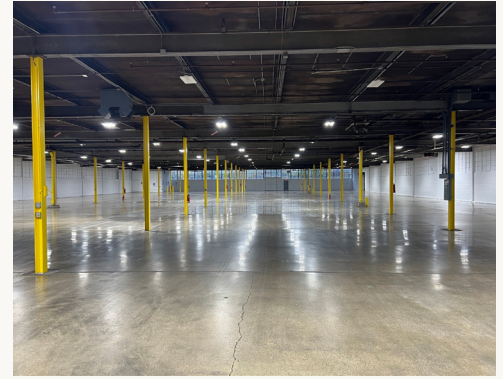
The information provided herein was obtained from sources believed reliable, however, Transwestern makes no guarantees, warranties, or representations as to the completeness or accuracy thereof. The presentation of this information is submitted subject to errors, omissions, change of price or conditions, prior sale or lease, or withdrawal without notice. Copyright © 2026 Transwestern.

5200-5230 W. Roosevelt Road

INDUSTRIAL BUILDING FOR LEASE

5200-5230 W Roosevelt Rd, Chicago, IL 60644
[Property Website](#)

**BROKER INCENTIVE: \$500
FOR ANY QUALIFIED RFP**



BUILDING PHOTOS

Joe Karmin, SIOR

Executive Vice President
(847) 287-4567
joe.karmin@transwestern.com

Justin Lerner, SIOR

Executive Vice President
(847) 858-5303
justin.lerner@transwestern.com

Ross Lehrman

Senior Vice President
(847) 946-4602
ross.lehrman@transwestern.com

The information provided herein was obtained from sources believed reliable, however, Transwestern makes no guarantees, warranties, or representations as to the completeness or accuracy thereof. The presentation of this information is submitted subject to errors, omissions, change of price or conditions, prior sale or lease, or withdrawal without notice. Copyright © 2026 Transwestern.