



**Edmonds Medical Pavilion**  
7320 216th St SW

# Edmonds Medical Office Portfolio

**MEDICAL OFFICES  
FOR LEASE**

**Marcus Yamamoto**

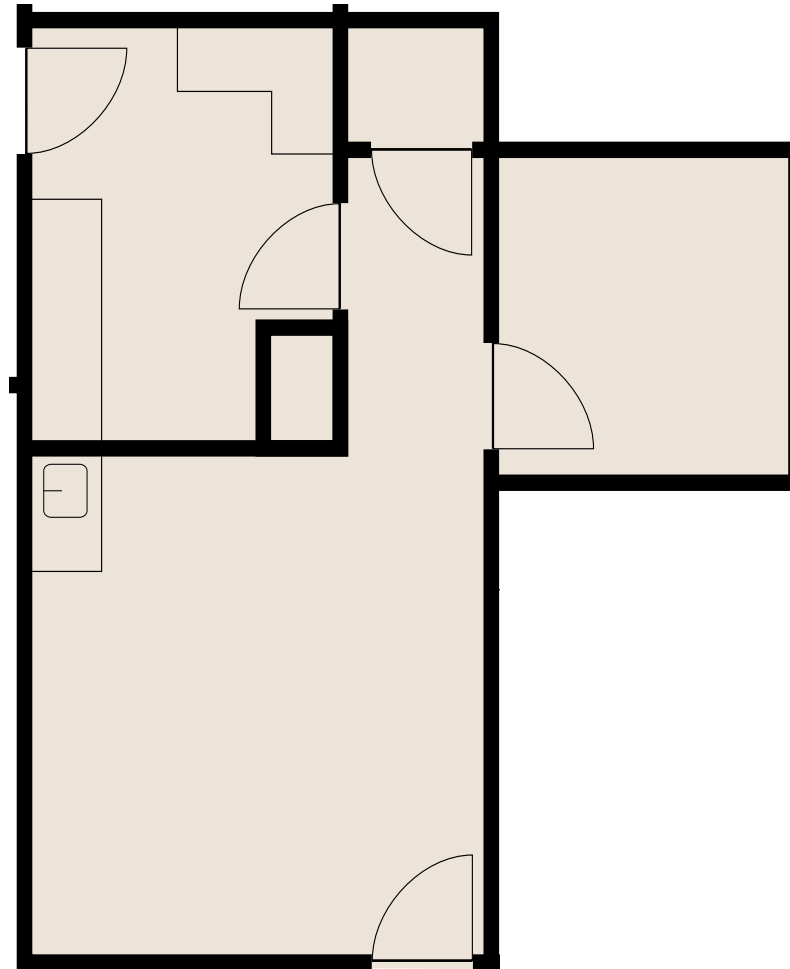
Senior Vice President  
+1 206 292 6062  
marcus.yamamoto@cbre.com

**John Bauer**

Senior Vice President  
+1 425 462 6906  
john.bauer@cbre.com

**Katie Smith**

Senior Associate  
+1 206 292 6012  
katie.m.smith@cbre.com



**Suite 15**  
**As-Built**  
**673 RSF**



**HEALTHCARE  
REALTY**



**Edmonds Medical Plaza**  
21616 76th Ave W

**Suite 108**  
**As-Built**  
**1,337 RSF**

# Edmonds Medical Office Portfolio

**MEDICAL OFFICES  
FOR LEASE**

## Marcus Yamamoto

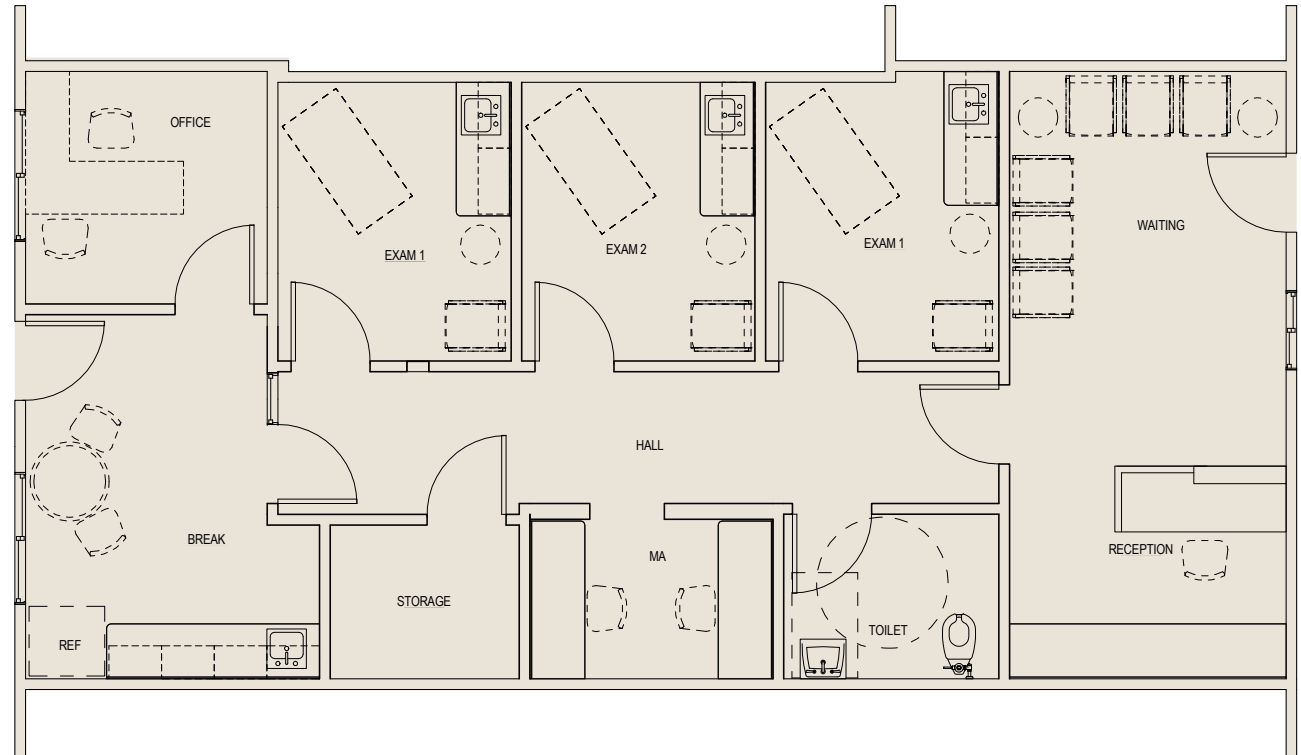
Senior Vice President  
+1 206 292 6062  
marcus.yamamoto@cbre.com

## John Bauer

Senior Vice President  
+1 425 462 6906  
john.bauer@cbre.com

## Katie Smith

Senior Associate  
+1 206 292 6012  
katie.m.smith@cbre.com



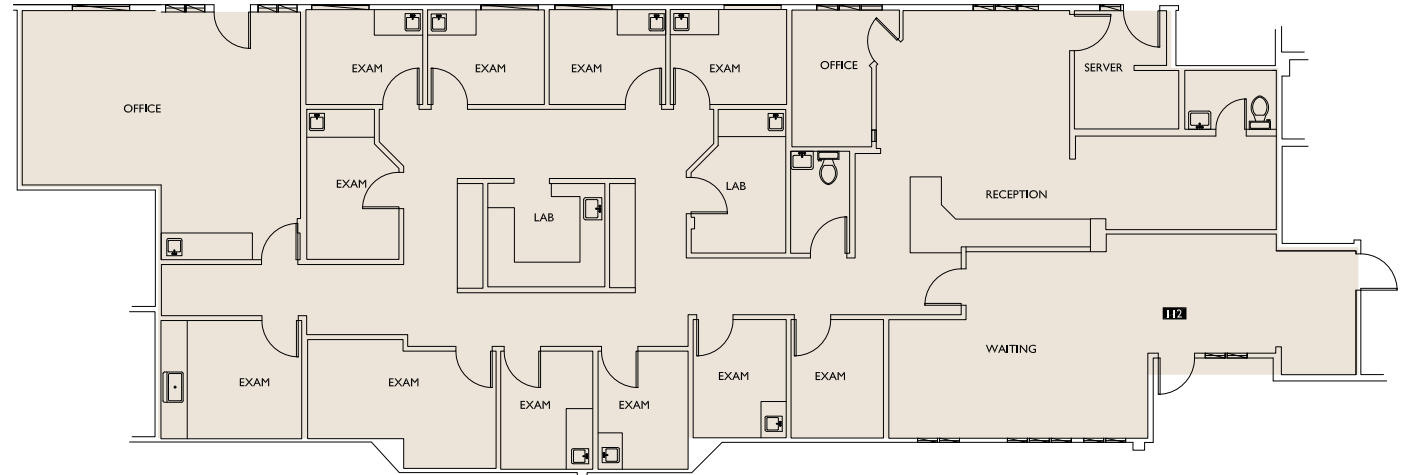


**Edmonds Medical Plaza**  
21616 76th Ave W

**Suite 112**  
**As-Built**  
**4,168 RSF**

# Edmonds Medical Office Portfolio

**MEDICAL OFFICES  
FOR LEASE**



**Marcus Yamamoto**

Senior Vice President  
+1 206 292 6062  
marcus.yamamoto@cbre.com

**John Bauer**

Senior Vice President  
+1 425 462 6906  
john.bauer@cbre.com

**Katie Smith**

Senior Associate  
+1 206 292 6012  
katie.m.smith@cbre.com



**HEALTHCARE  
REALTY**

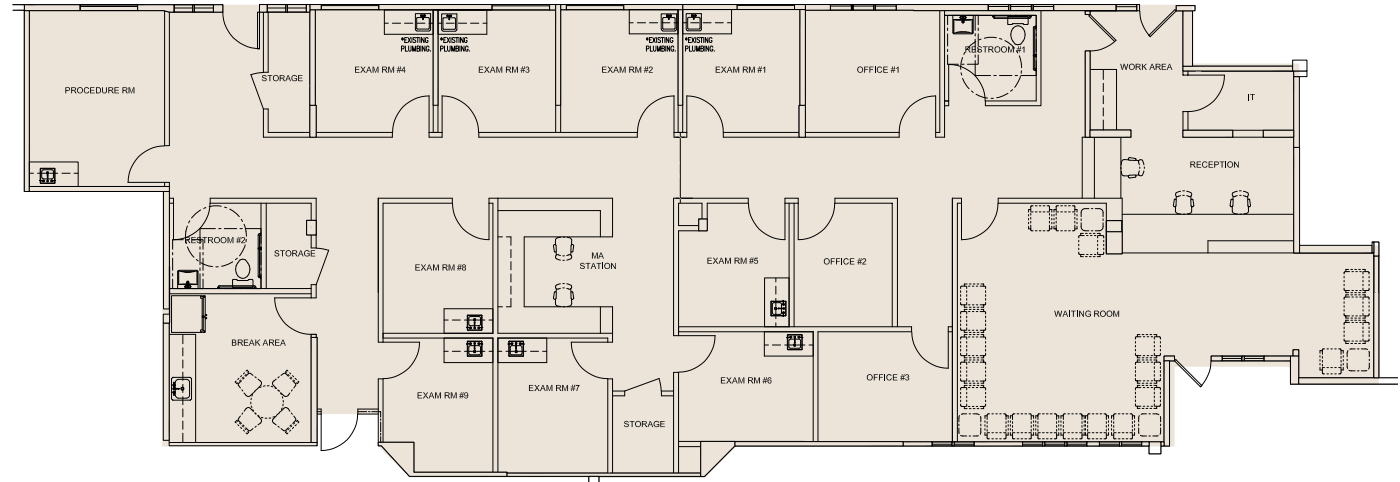


**Edmonds Medical Plaza**  
21616 76th Ave W

**Suite 112**  
**Concept Clinic Plan**  
4,168 RSF

# Edmonds Medical Office Portfolio

**MEDICAL OFFICES  
FOR LEASE**



**Marcus Yamamoto**

Senior Vice President  
+1 206 292 6062  
marcus.yamamoto@cbre.com

**John Bauer**

Senior Vice President  
+1 425 462 6906  
john.bauer@cbre.com

**Katie Smith**

Senior Associate  
+1 206 292 6012  
katie.m.smith@cbre.com



**HEALTHCARE  
REALTY**



**Pacific Commons**  
21727 76th Ave W

# Edmonds Medical Office Portfolio

**MEDICAL OFFICES  
FOR LEASE**

## Marcus Yamamoto

Senior Vice President  
+1 206 292 6062

[marcus.yamamoto@cbre.com](mailto:marcus.yamamoto@cbre.com)

## John Bauer

Senior Vice President  
+1 425 462 6906

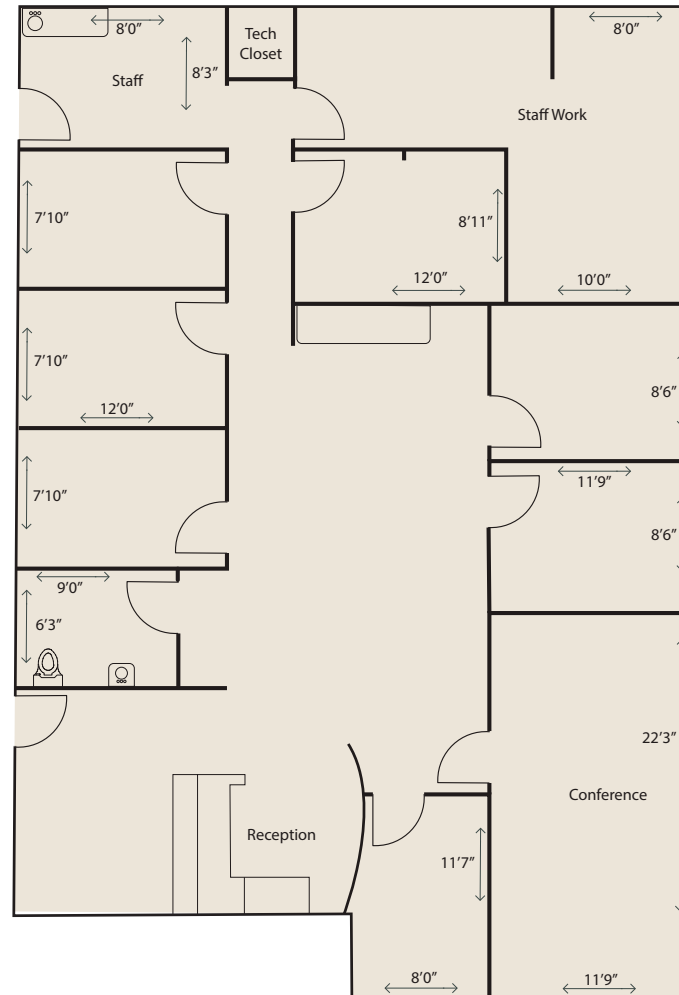
[john.bauer@cbre.com](mailto:john.bauer@cbre.com)

## Katie Smith

Senior Associate  
+1 206 292 6012

[katie.m.smith@cbre.com](mailto:katie.m.smith@cbre.com)

**Suite J**  
**As-Built**  
**Available 1/1/26**  
**2,529 RSF**



**HEALTHCARE  
REALTY**