



INDUSTRIAL WAREHOUSE
SPACE AVAILABLE

For sale or lease

26378 289TH PLACE, ADEL, IA 50003

Property overview



DRIVE-INS
3 (14', 12', 10' tall)



DOCKS
4 (3 with levelers)



CLEAR HEIGHT
14' - 21'



AVAILABLE
51,875 - 106,375 SF
(+/- 8,000 SF of office space)



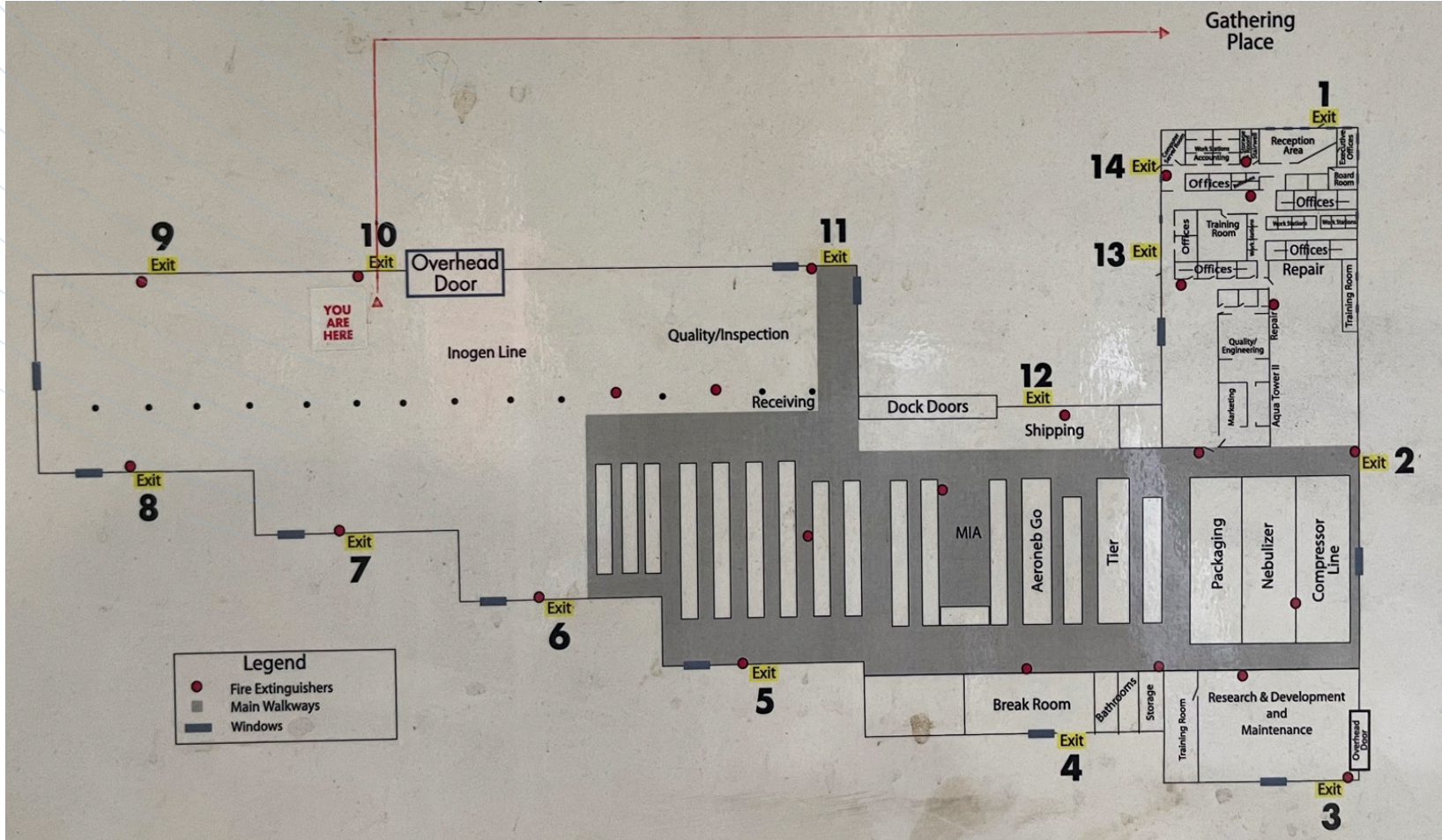
SALE PRICE
\$4,500,000



LEASE RATE
\$3.50/RSF NNN



EST. OPEX
\$1.25/RSF



Property specs

STORAGE

Outdoor storage allowed

FLEX SPACE

Warehouse office with breakroom

WET SPRINKLER

Rated for tire storage with City of Adel

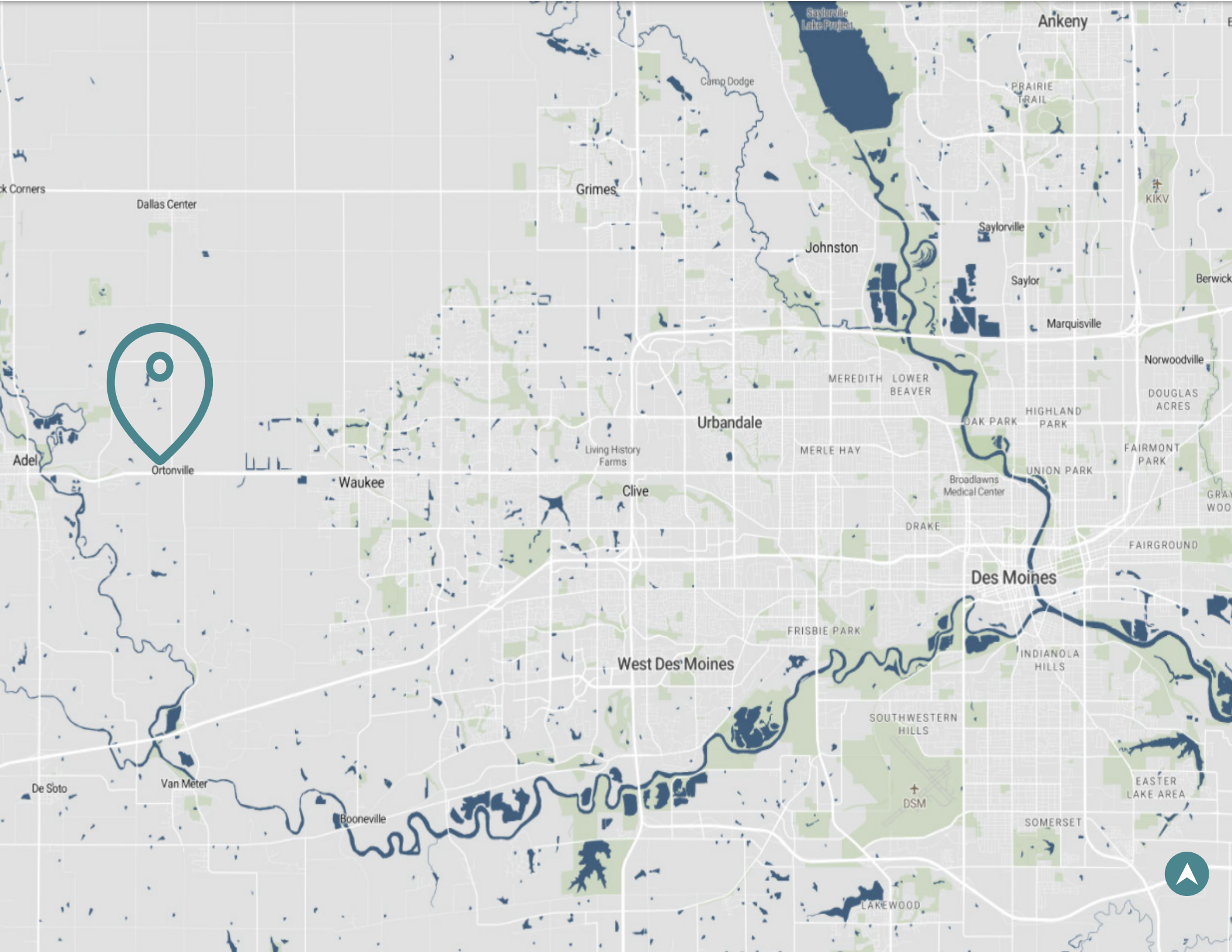
POWER

3-phase

PARKING

On-site parking available





Location

This property is conveniently located in a developing Western Suburb within the Des Moines metro area. It's positioned along Highway 6, providing a direct commute of 25 minutes to Downtown Des Moines and just 10 minutes from Interstate 80. It is situated adjacent to the Apple Data Center site, and down the road from MidAmerican Service Center.



26378 289th Place

Adel, Iowa 50003

CONTACT BROKER BELOW FOR
ADDITIONAL INFORMATION

Marcus R. Pitts, CCIM, SIOR
Executive Managing Director
marcus.pitts@jll.com
+1 515 556 4727

Austin Hedstrom, SIOR
Executive Vice President
austin.hedstrom@jll.com
+1 515 414 1767

Tanner Hedstrom
Vice President
tanner.hedstrom@jll.com
+1 515 745 2734

Although information has been obtained from sources deemed reliable, neither Owner nor JLL makes any guarantees, warranties or representations, express or implied, as to the completeness or accuracy as to the information contained herein. Any projections, opinions, assumptions or estimates used are for example only. There may be differences between projected and actual results, and those differences may be material. The Property may be withdrawn without notice. Neither Owner nor JLL accepts any liability for any loss or damage suffered by any party resulting from reliance on this information. If the recipient of this information has signed a confidentiality agreement regarding this matter, this information is subject to the terms of that agreement. © 2026 Jones Lang LaSalle IP, Inc. All rights reserved.

