

2746 Durfee Ave | El Monte, CA 91732
Units D, FG & KL



FOR LEASE

±1,500 SF to ±3,000 SF
Multi-Tenant Industrial Units

HIGHLIGHTS

- Ready for immediate occupancy
- Sprinklered warehouses
- High Ceilings (Approx. 16 ft)
- Zoning: MMU* tenant to verify



Gloria Jimenez

Associate | LIC ID 02229086

e gjimenez@lee-associates.com
m 323.629.3464
d 323.767.2061

Lee & Associates | Los Angeles Central
5675 Telegraph Rd, Ste 300, Commerce, CA 90040

Justin Chiang

Senior Vice President | LIC ID 01903437

e jchiang@lee-associates.com
m 626.552.2867
d 626.701.2401

Lee & Associates | Industry
3181 Crossroads Pkwy, N. Ste 300, Industry, CA 91746

Kevin Ching, SIOR

Senior Vice President | LIC ID 01899995

e kching@lee-associates.com
o 626.701.2405

 LEE &
ASSOCIATES
COMMERCIAL REAL ESTATE SERVICES

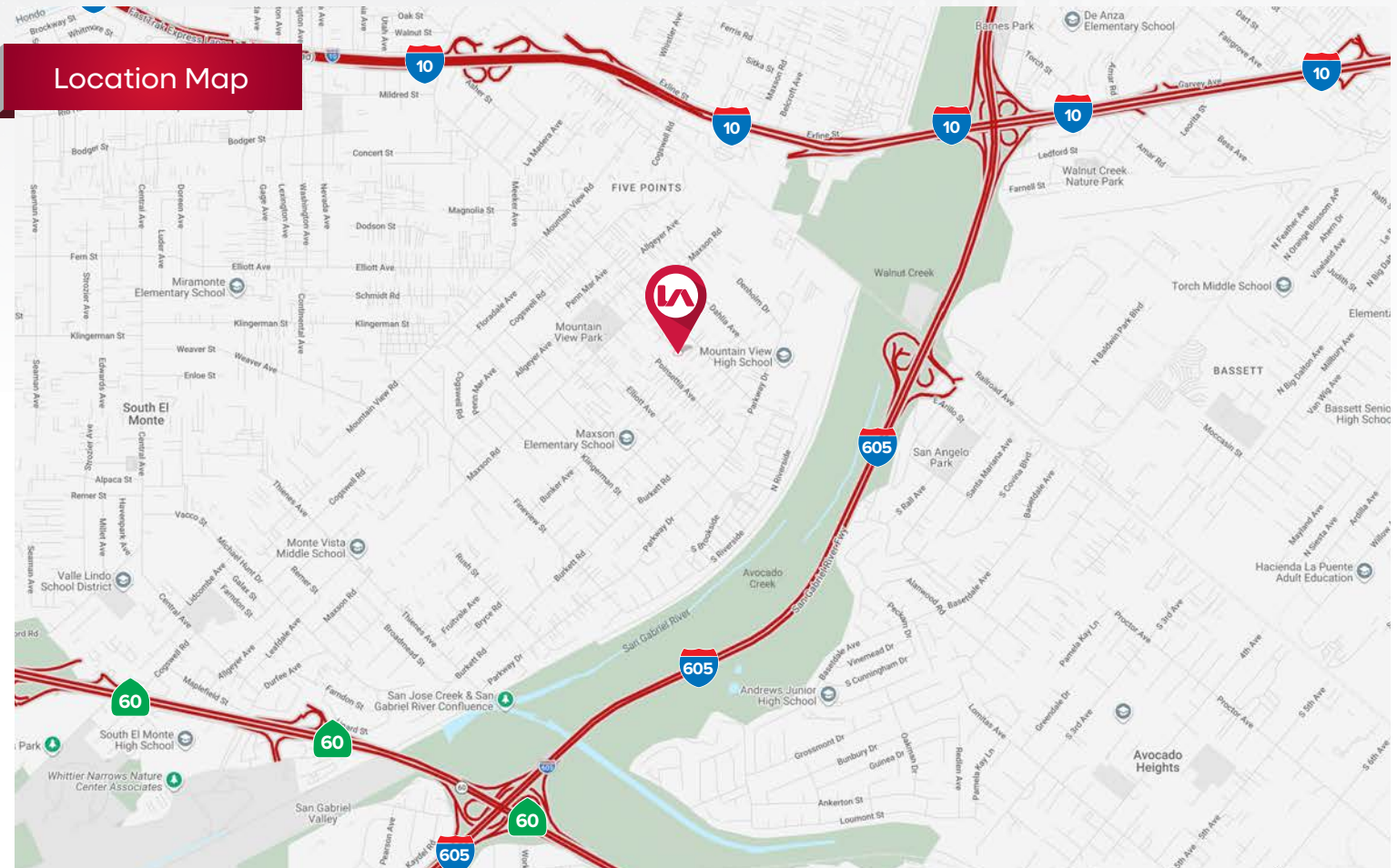
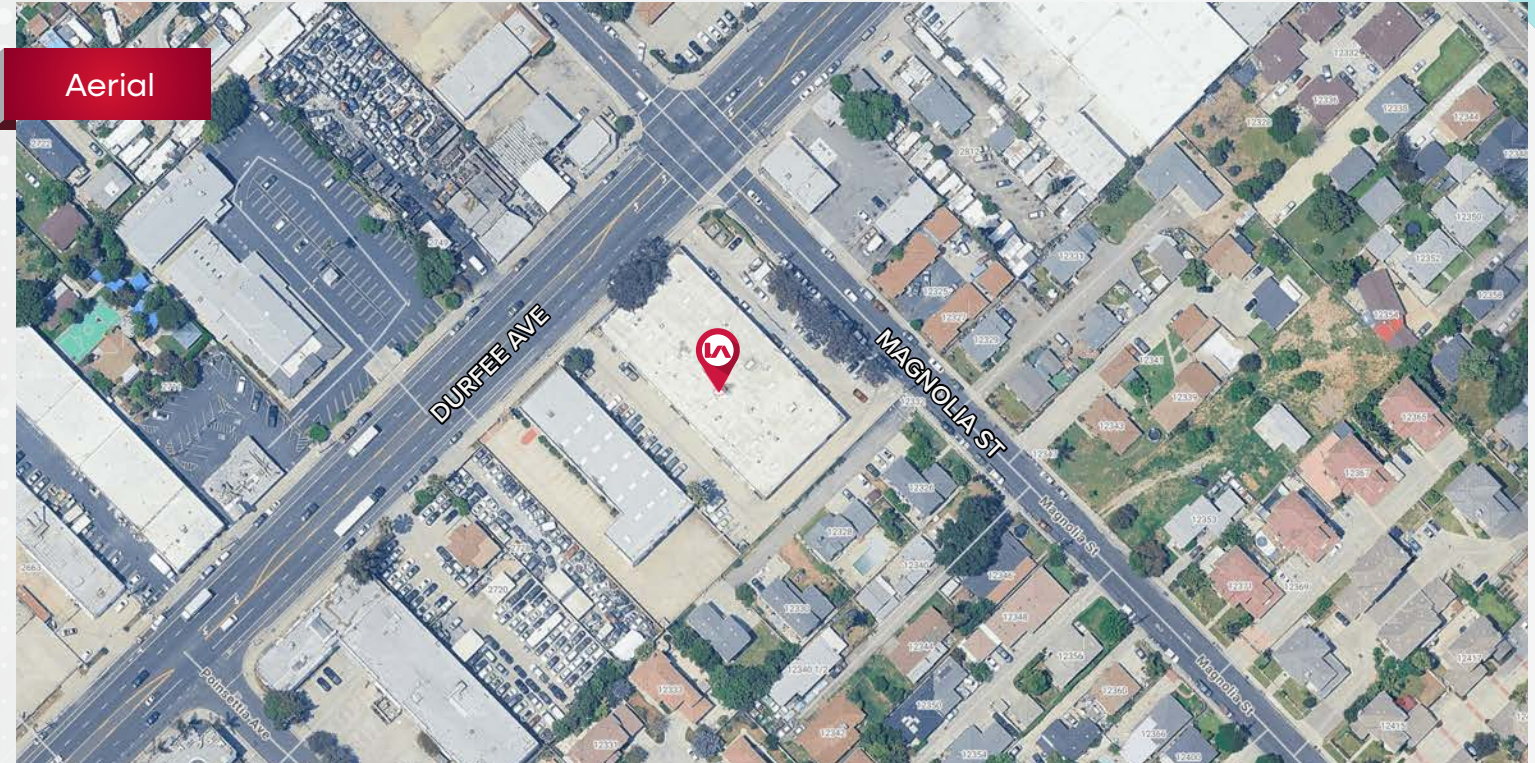
VISIT US AT LEE-ASSOCIATES.COM

CORP ID 01125429

The information contained herein is obtained from sources believed to be reliable. However, we have not verified it and make no guarantees, warranties or representations as to the completeness or accuracy thereof. The presentation of this property is used for example and is submitted subject to errors, omissions, change of price or conditions, and is subject to prior sale, lease or withdrawal without notice.

For Lease

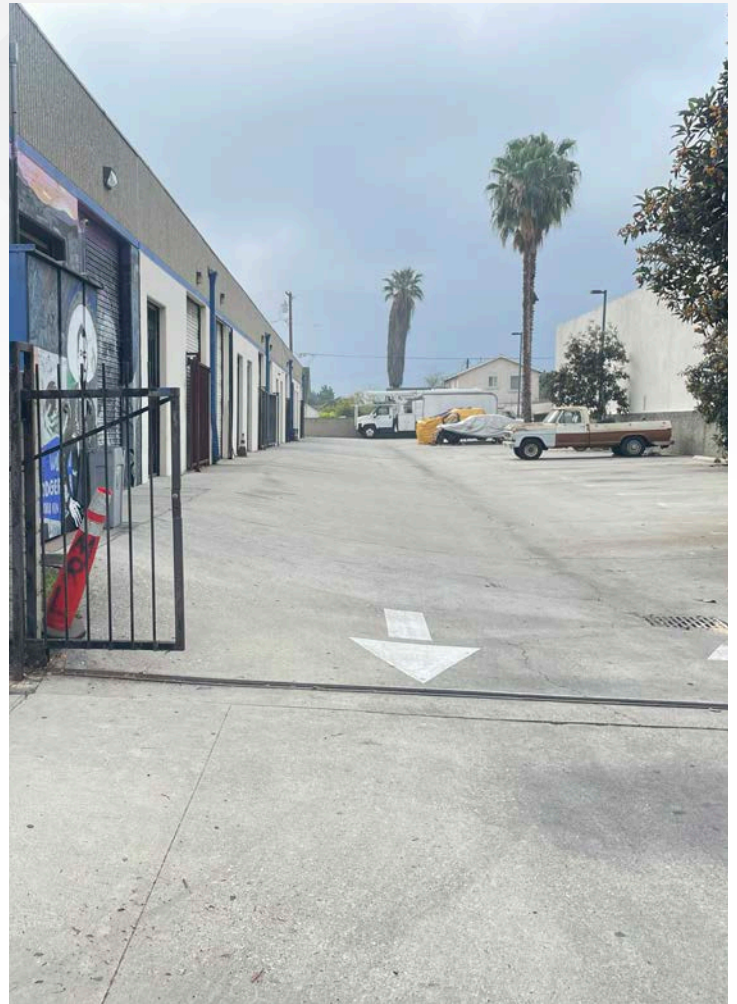
2746 Durfee Ave | El Monte, CA 91732 (Units D, FG & KL)



For Lease

2746 Durfee Ave | El Monte, CA 91732 (Units D, FG & KL)

Property Photos

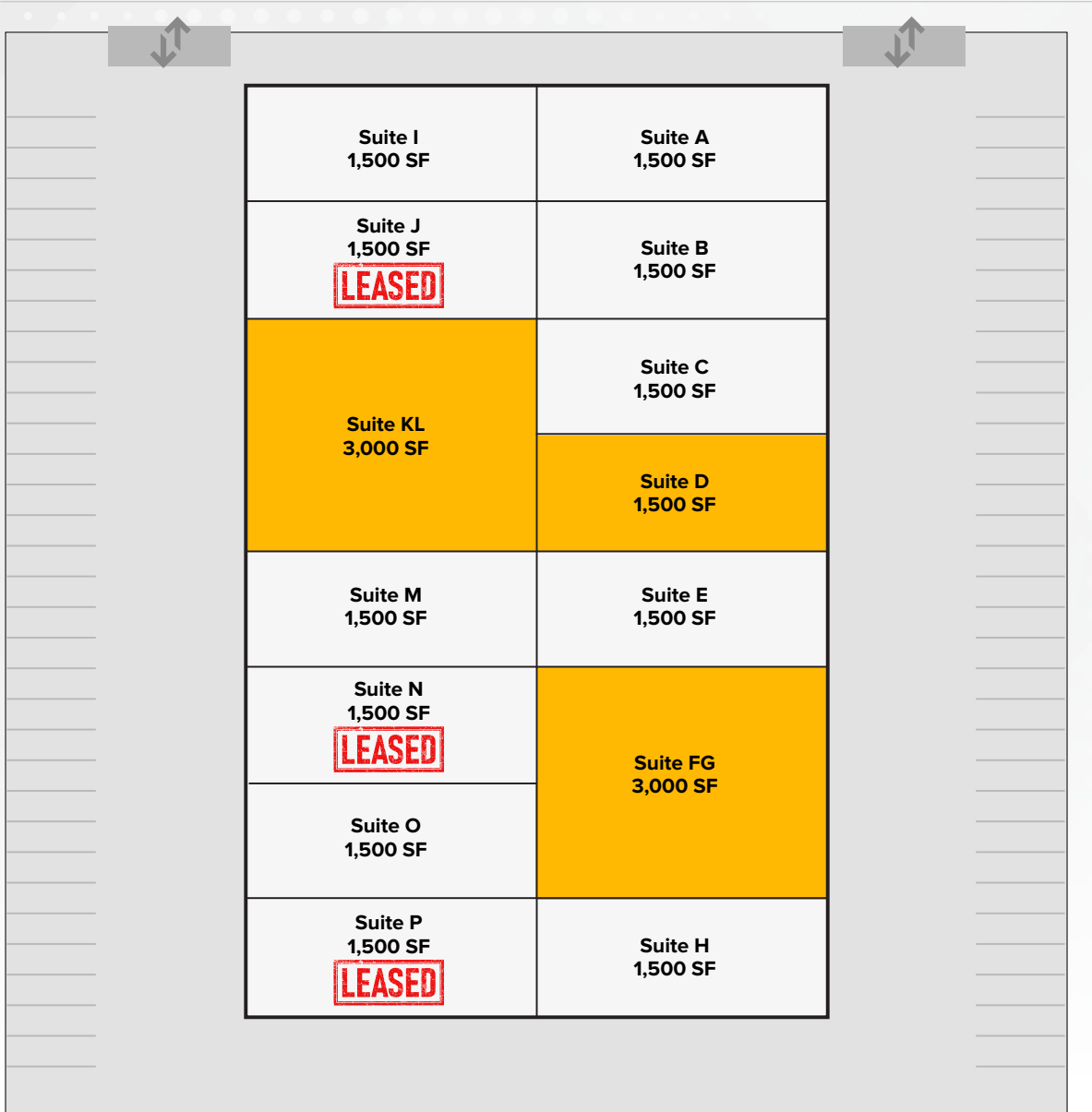


For Lease

2746 Durfee Ave | El Monte, CA 91732 (Units D, FG & KL)

Property Site Plan

Durfee Ave



Units Available for Lease

Unit #	Size Sq. Ft.
Suite D	1,500 SF
Suite FG	3,000 SF
Suite J	LEASED 1,500 SF
Suite KL	3,000 SF
Suite N	LEASED 1,500 SF
Suite P	LEASED 1,500 SF

For Lease

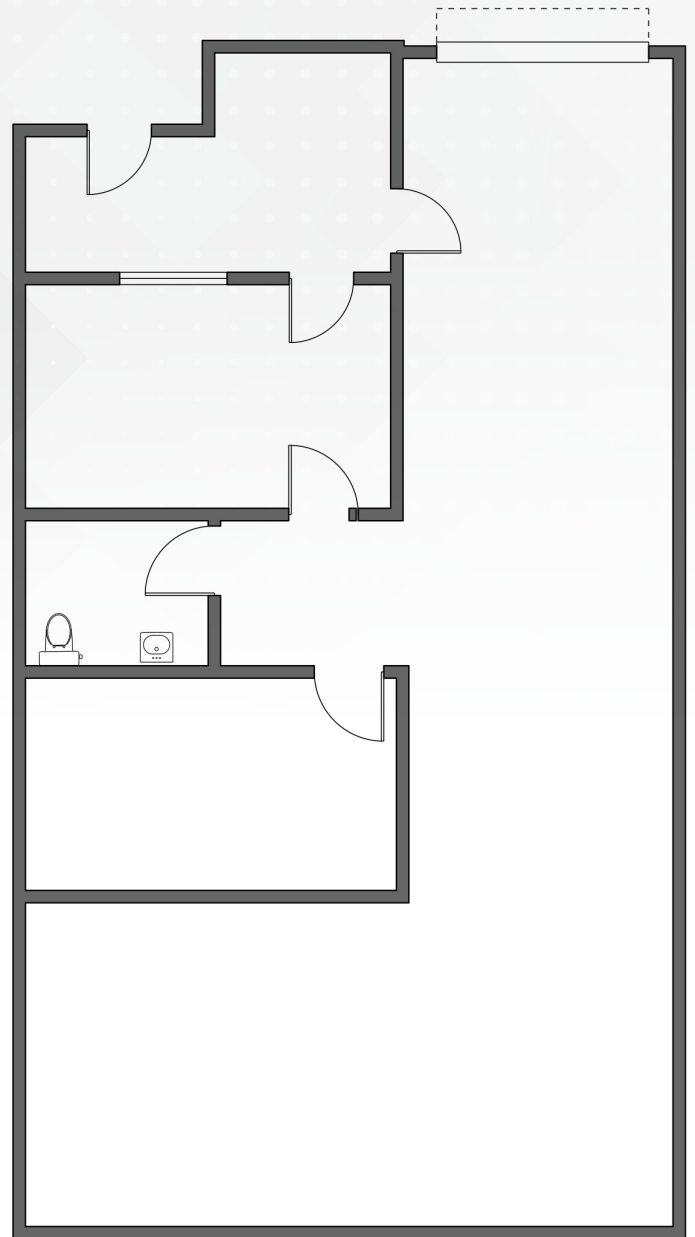
2746 Durfee Ave | El Monte, CA 91732 (Units D, FG & KL)

Unit D

HIGHLIGHTS

- ±1,500 SF unit
- 1 Grade Level Door (front loading) - 10x12
- Reception, office + storage room/office
- Ready for immediate occupancy
- Sprinklered warehouse
- High ceilings (Approx. 16 ft)

FLOOR PLAN



For Lease

2746 Durfee Ave | El Monte, CA 91732 (Units D, FG & KL)

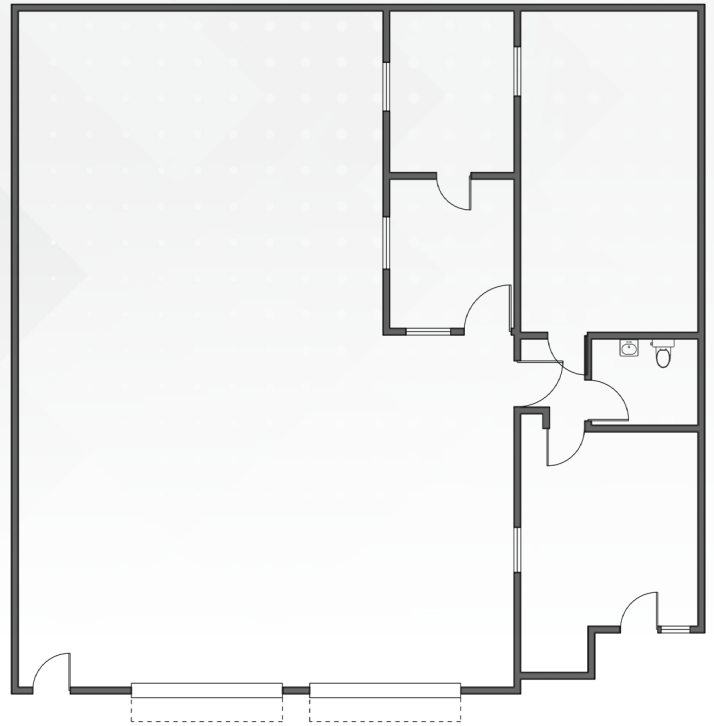
Unit FG



HIGHLIGHTS

- ±3,000 SF unit
- 2 Grade Level Door (front loading) - 10x12
- Two receptions + three offices
- Ready for immediate occupancy
- Sprinklered warehouse
- High Ceilings (Approx 16 ft)

FLOOR PLAN



For Lease

2746 Durfee Ave | El Monte, CA 91732 (Units D, FG & KL)

Unit KL



HIGHLIGHTS

- ±3,000 SF unit
- 2 Grade Level Doors (front loading) - 10x12
- Two receptions + one offices/reception + two offices
- Ready for immediate occupancy
- Sprinklered warehouse
- High Ceilings (Approx 16 ft)



FLOOR PLAN

