

Compton

For Rent and Sale
**206-212 St John Street
Clerkenwell EC1**



Price Adjustment | For Sale / Rent -
Newly Refurbished Prime
Clerkenwell Office / Showroom
With Direct Access from St John
Street

For Rent and Sale

Size

6,293 Ft²

Price

£3,950,000 Perfect opportunity for owner occupiers / end users

Rent

£59.50 per sq ft

Fitout

Not Fitted

Compton

Paramount Building
206-212 St John Street
Clerkenwell EC1V

Description

Built in 1936-8 by the builders John Laing & Son Ltd, and designed by Culpin & Son the building was constructed in Red brick and called Wigton House, it was occupied for manufacturing and warehousing by a variety of companies including Scholl the foot ware company, a brand started by podiatrist William Mathias Scholl in 1906.

In the late 1990s Wigton House was converted to apartments by Warner Lofts and renamed 'The Paramount Building'. The building was glamorised with white painted render and glass balconies while the top three floors have spectacular roof terraces with Skyline views of most well-known London Landmarks. It now houses 32 outstanding 1, 2 and 3 bedroom loft apartments with most having secure underground parking.



For Rent and Sale

Paramount Building
206-212 St John Street
Clerkenwell EC1V

Size

6,293 Ft²

Price

£3,950,000 Perfect opportunity for
owner occupiers / end users

Rent

£59.50 per sq ft

Fitout

Not Fitted

Description

Possession immediately available.

There is also an apartment on 3rd
floor.

The offices and apartment do not
need to sell / lease both together,
but this can be delivered if required.



For Rent and Sale

Paramount Building
206-212 St John Street
Clerkenwell EC1V

Click to Play



For Rent and Sale

Paramount Building
206-212 St John Street
Clerkenwell EC1V

Click to Play



For Rent and Sale

Paramount Building
206-212 St John Street
Clerkenwell EC1V

Ground Floor

Size

6,293 Ft²

Price

£3,950,000 Perfect opportunity for
owner occupiers / end users

Rent

£59.50 per sq ft

Fitout

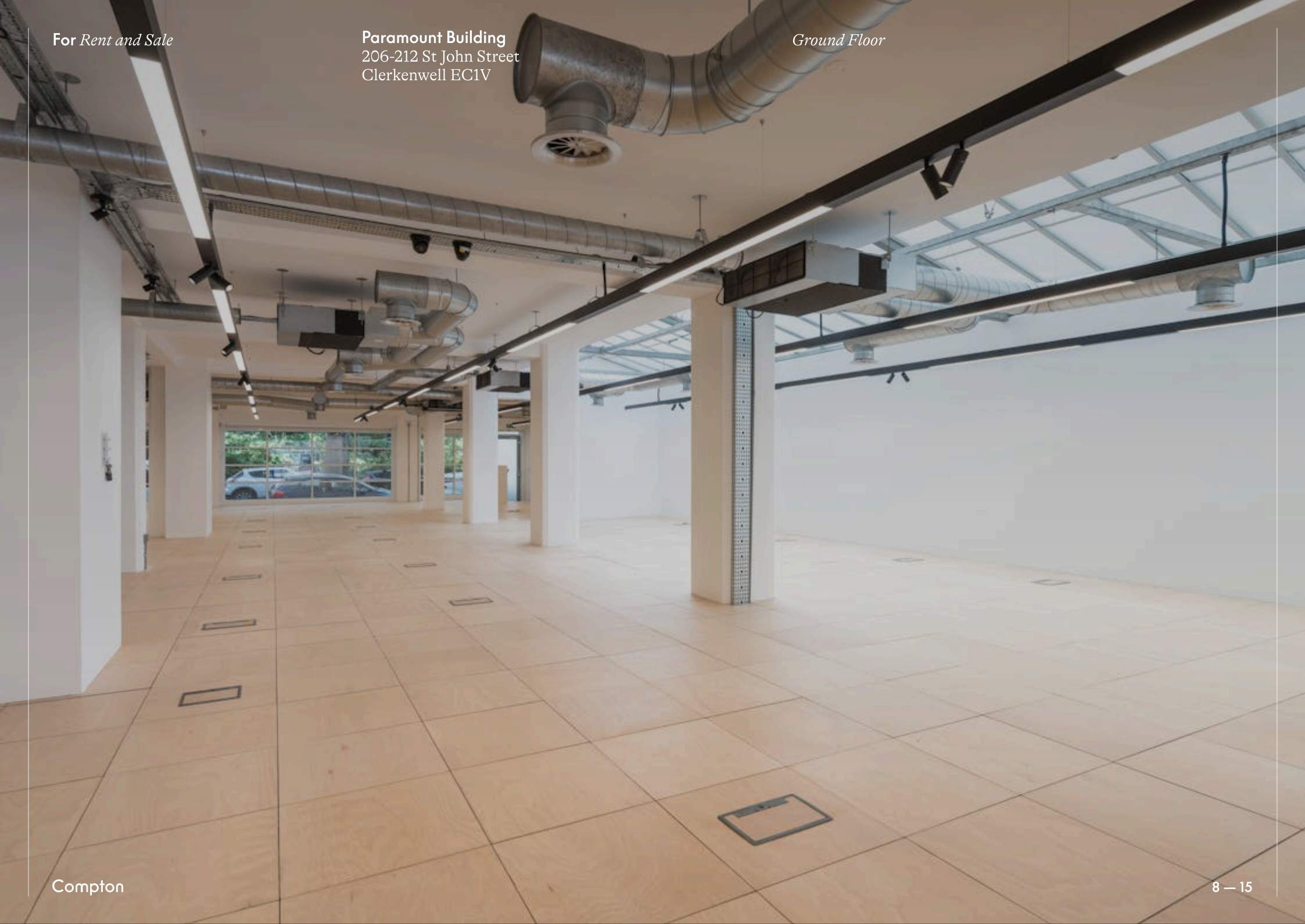
Not Fitted



For Rent and Sale

Paramount Building
206-212 St John Street
Clerkenwell EC1V

Ground Floor



For Rent and Sale

Paramount Building
206-212 St John Street
Clerkenwell EC1V

St John Street External



MC35395801HR.jpg

For Rent and Sale

Paramount Building
206-212 St John Street
Clerkenwell EC1V

Location

The Paramount Building is situated on St John Street north of Clerkenwell Road between Angel Islington and Smithfield Market with direct access to all local vibrant bars and restaurants.

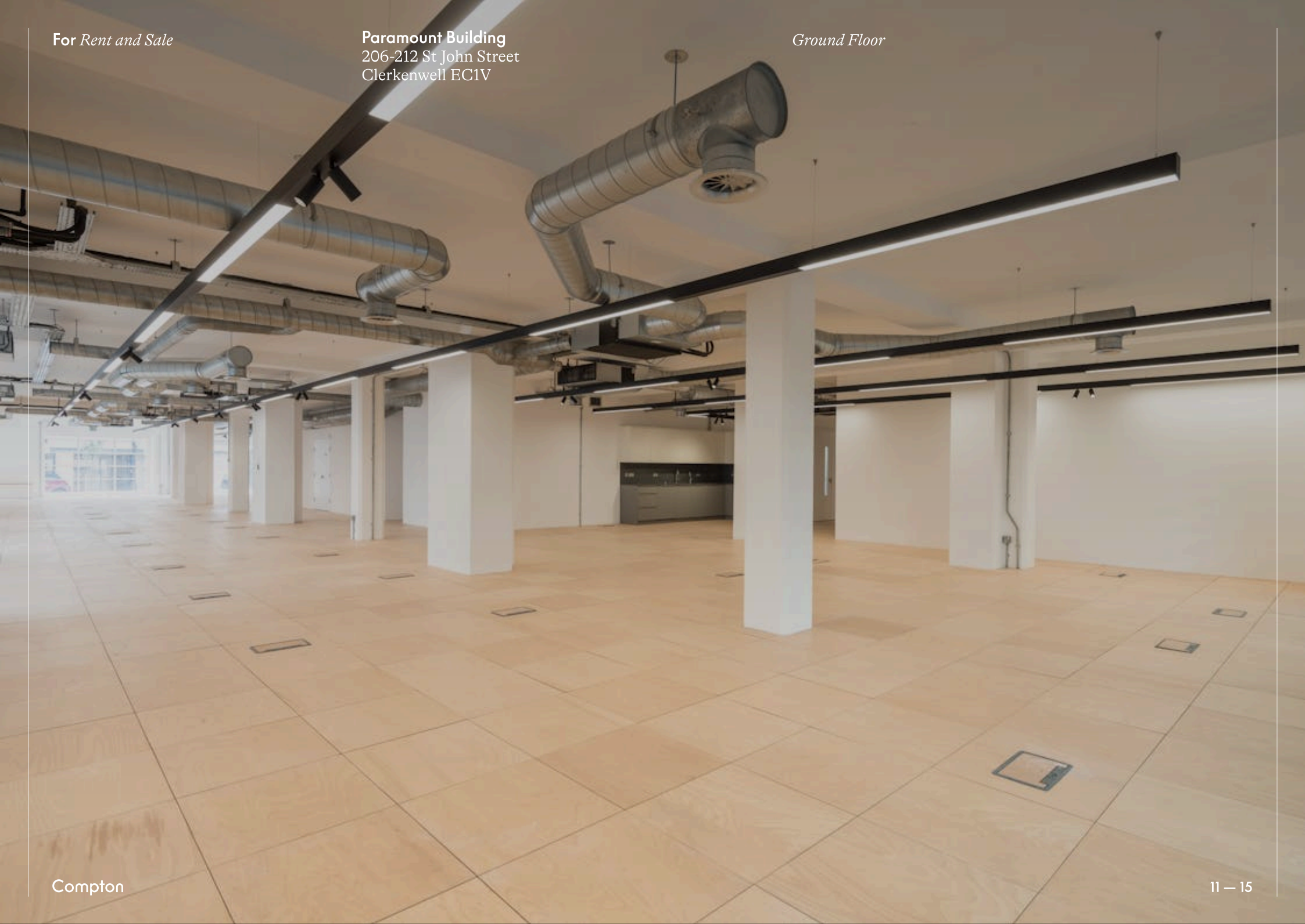
The location offers excellent access to the City and West End via local transport links from Farringdon, Angel and Barbican Underground / National Rail Stations.



For Rent and Sale

Paramount Building
206-212 St John Street
Clerkenwell EC1V

Ground Floor

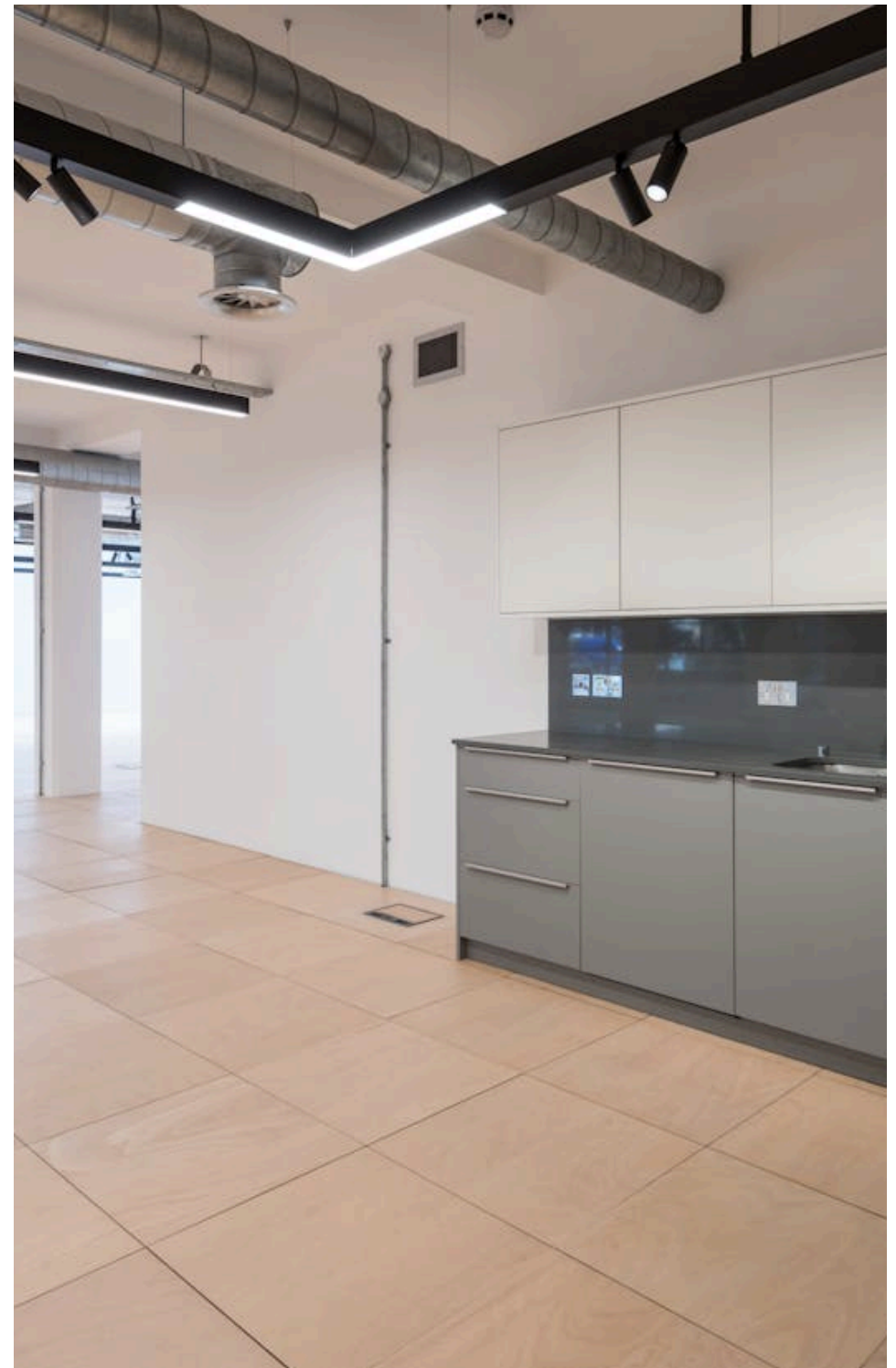


For Rent and Sale

Paramount Building
206-212 St John Street
Clerkenwell EC1V

Amenities

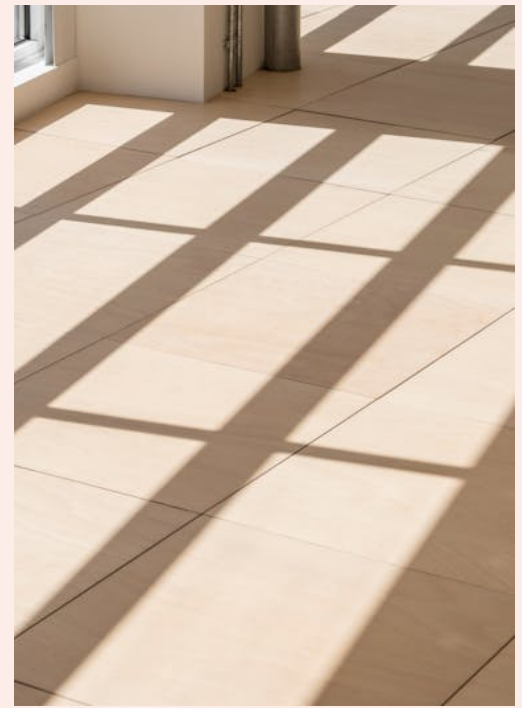
- Could be ideal for creative office or showroom
- Generous Street Frontage of 20.35m approx
- Own front door direct from St John Street and rear access from Agdon Street
- Rear street access from Agdon Street
- Self-contained WCs
- Good floor to ceiling heights
- Superb natural daylight
- Wood block raised flooring
- New LED lighting
- New air-conditioning
- Skylights
- Loading bay doors to the rear
- Car parking spaces available by arrangement
- Short walk to Farringdon station



For Rent and Sale

Paramount Building
206-212 St John Street
Clerkenwell EC1V

Ground Floor



Fan coil units

Name	Sq Ft	Rent (Sq Ft)	Price	Rates Payable (Sq Ft)	Service Charge (Sq Ft)	Total /Sq Ft	Total Month	Total Year	Availability
Ground - Generous Frontage	6,293	£59.50	£3,950,000	£15.89	n/a	£75.39	£39,535.77	£474,429.27	Available
Total	6,293	£59.50		£15.89		£75.39	£39,535.77	£474,429.27	

For Rent and Sale

Paramount Building
206-212 St John Street
Clerkenwell EC1V

Terms

New full repairing & Insuring lease
for a term by arrangement

Content

Watch the Film
(click button)



Local Authority

London Borough of Islington

Listed status

Not Listed

Sale Price

£3,950,000 (£627.68 /Ft²) +VAT.

Tenure

New Lease

Availability

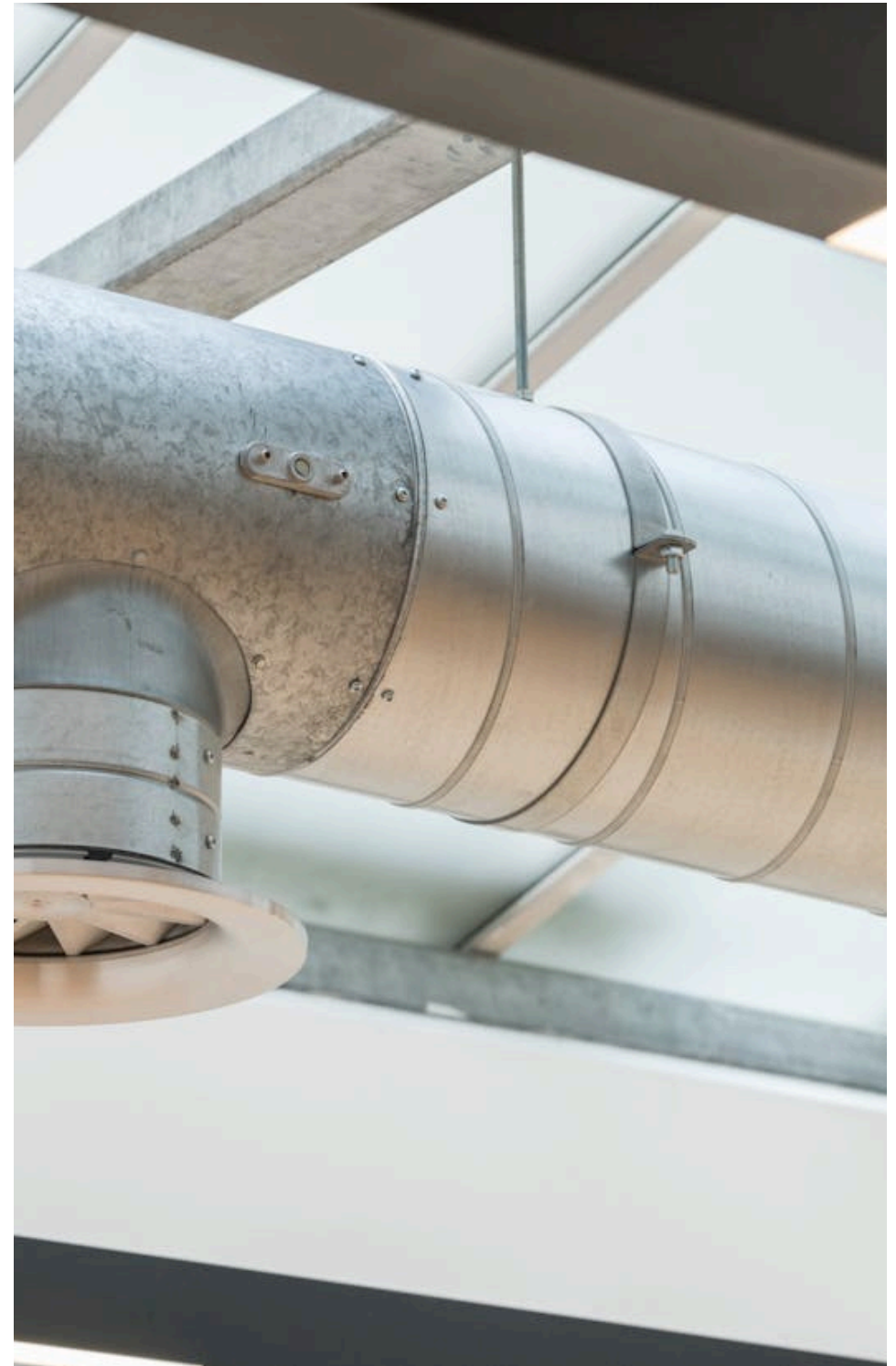
Available Immediately

Legal Costs

Each party to bear their own costs

VAT

Applicable. VAT will be applicable
on outgoings.



Contact Us

compton.london

020 7101 2020

enquiries@compton.london

All appointments to view must be arranged via sole agents, Compton, through:



Michael Raibin
mr@compton.london
0207 101 2020 | 07880 795 679



Emma Higgins
eh@compton.london
0207 101 2020 | 07769 605 295



Sarah Hill
sh@compton.london
0207 101 2020 | 07936 338 774