

600, 604, 608 Pacific Avenue

Light Manufacturing/Automotive

600, 604, 608 Pacific Ave
Oxnard, CA 93030

Sale Price: \$1,768,050

7,858 SF

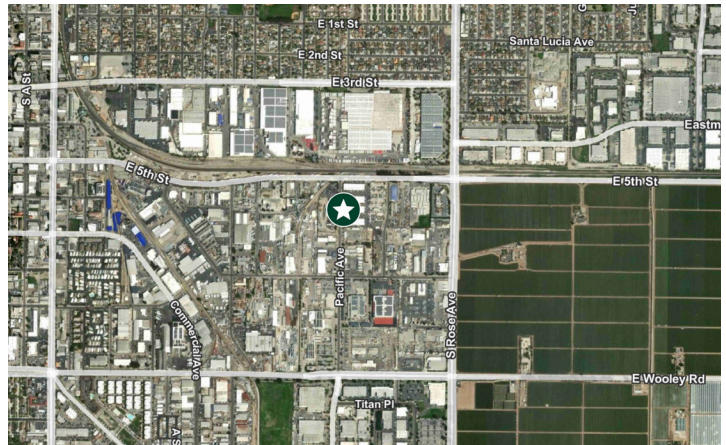
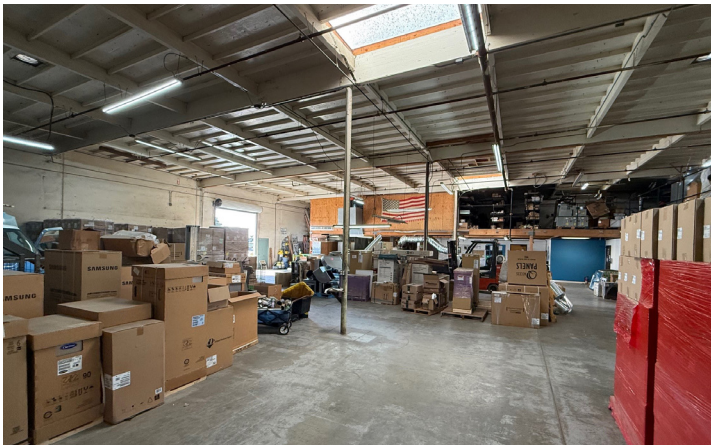


Property Features

- + Rare End Cap Unit
- + Automotive Uses Allowed
- + Zoned: M2
- + Central Oxnard Location
- + Bonus Storage Mezzanine

Property Specifications

- + Power: 600 amps, 120–208 volt, 3 phase 4-wire
- + Doors: 2 (10' x 12')
- + Clear Height: 16'
- + Office: 1,666 / 6
- + Parking: 11 Spaces



Contact Us

Dexter Wilkerson

Associate
+1 805 288 4668
dexter.wilkerson@cbre.com
Lic. 02160842

John Cardona

First Vice President
+1 818 634 9590
john.cardona@cbre.com
Lic. 2004799

© 2026 CBRE, Inc. All rights reserved. This information has been obtained from sources believed reliable, but has not been verified for accuracy or completeness. You should conduct a careful, independent investigation of the property and verify all information. Any reliance on this information is solely at your own risk. CBRE and the CBRE logo are service marks of CBRE, Inc. All other marks displayed on this document are the property of their respective owners, and the use of such logos does not imply any affiliation with or endorsement of CBRE. Photos herein are the property of their respective owners. Use of these images without the express written consent of the owner is prohibited.