



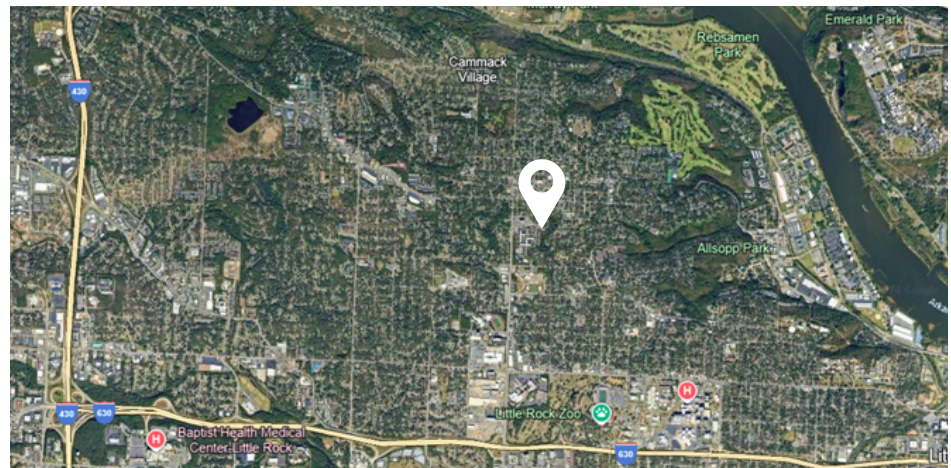
## Forest Heights Bldg - 1405 N. Pierce | Little Rock, AR 72207

### AVAILABLE

<b>Suite 101</b>	2,913 SF +/- <i>(can be subdivided)</i>
<b>Suite 204</b>	1,067 SF +/-
<b>Suite 205</b>	530 SF +/-
<b>Suite 301</b>	2,331 SF +/-
<b>Suite 306</b>	1,838 SF +/-
<b>Suite 307</b>	561 SF +/-
<b>Suite 311</b>	1,867 SF +/-
<b>Suite 312</b>	813 SF +/-
<b>Lease Rate:</b>	\$17.00 - 18.00 SF/yr (Full Service) TI Negotiable

### PROPERTY OVERVIEW

Located in the heart of Midtown, Forest Heights Office Building offers a unique blend of convenience and tranquility. Near restaurants, medical, banks & more. Situated on a private drive offering peaceful views and professionally managed with free onsite parking.





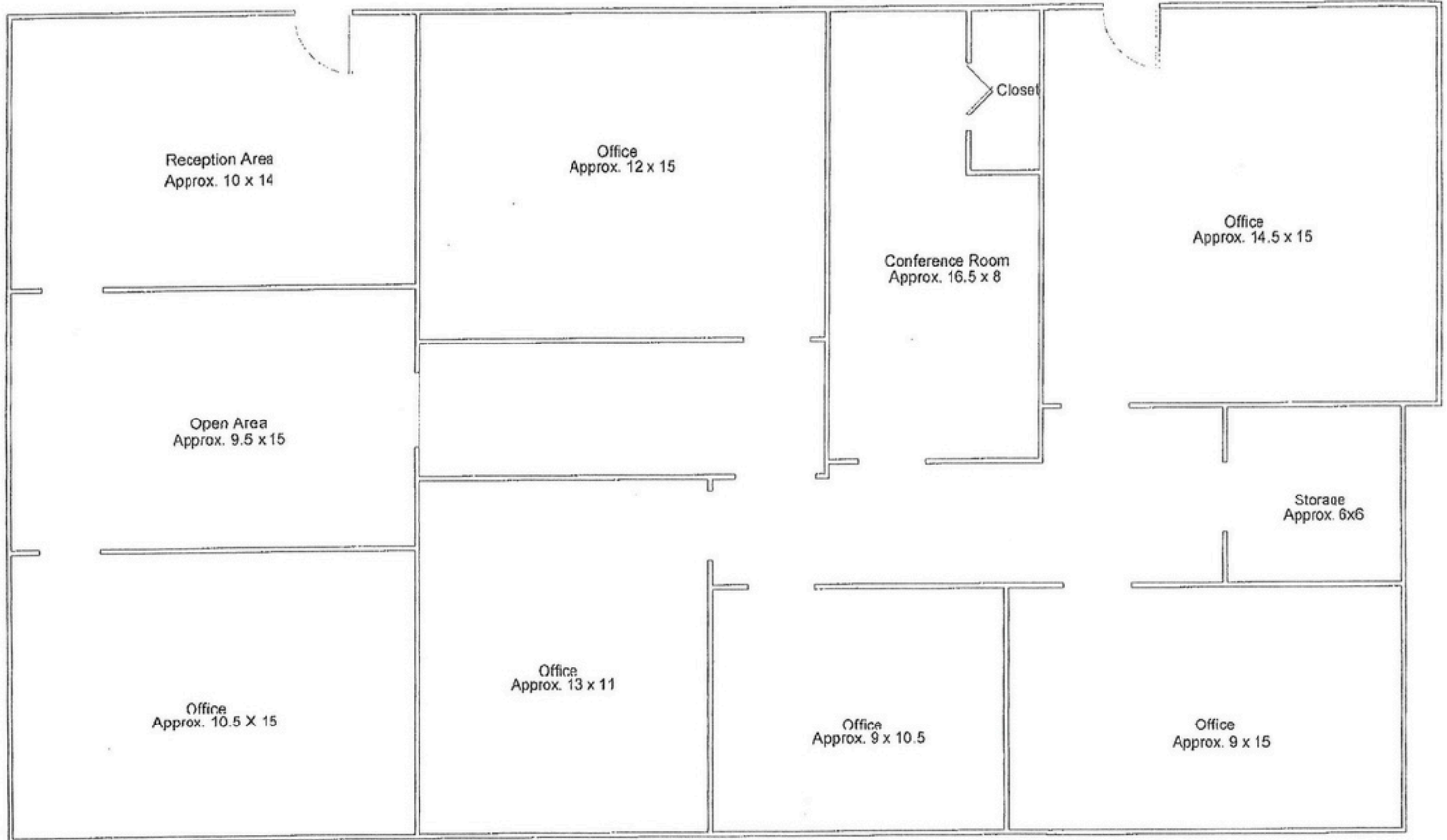


COMMERCIAL & INVESTMENT DIVISION

# Floor Plan - Ste. 306

Suite 306  
1,838 S.F.

Common Area Hall



Forest Height Office Building  
Professionally Leased and Managed by  
RPM Management Company, Inc.

Disclosure: Not to scale.

Information is deemed reliable but is not guaranteed. Agency Disclosure: RPM Group is the agent for the owner of the property described herein.

File Num: 99-60-2048

**TOM COLE**  
(C)501.960.3648 | (O)501.664.7807  
tocole@rpmgroup.com

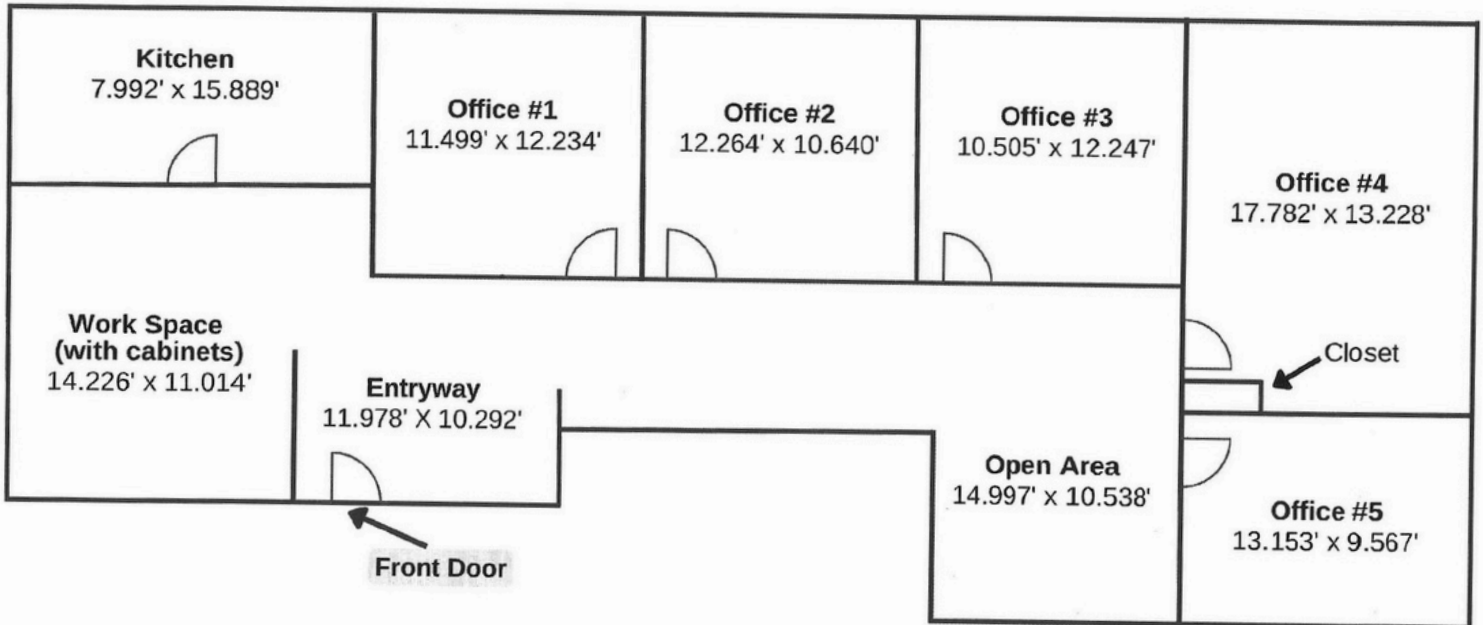
**CAROLINE OTWELL**  
(C)501.749.0330 | (O)501.664.7807  
cotwell@rpmgroup.com

1501 N. University Avenue, Ste. 800  
Little Rock, AR 72207  
501.664.7807 | www.rpmgroup.com



COMMERCIAL & INVESTMENT DIVISION

# Floor Plan - Ste. 311



Disclosure: NOT to scale. Measurements may not be accurate.

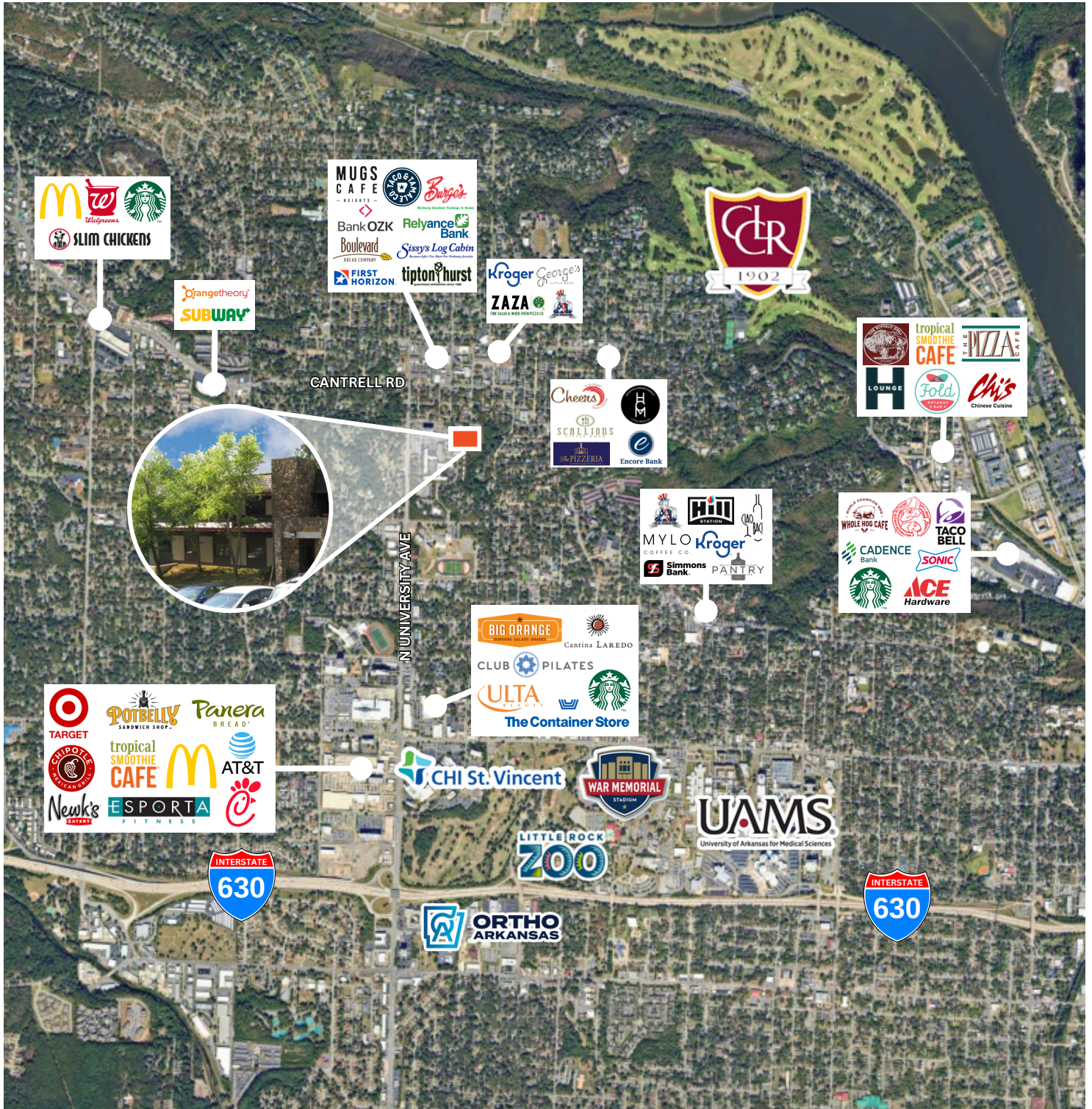
Information is deemed reliable but is not guaranteed. Agency Disclosure: RPM Group is the agent for the owner of the property described herein.

File Num: 99-60-2048

**TOM COLE**  
(C)501.960.3648 | (O)501.664.7807  
tocoler@rpmgroup.com

**CAROLINE OTWELL**  
(C)501.749.0330 | (O)501.664.7807  
cotwell@rpmgroup.com

1501 N. University Avenue, Ste. 800  
Little Rock, AR 72207  
501.664.7807 | www.rpmgroup.com



Information is deemed reliable but is not guaranteed. Agency Disclosure: RPM Group is the agent for the owner of the property described herein.

File Num: 99-60-2048

**TOM COLE**  
 (C)501.960.3648 | (O)501.664.7807  
 tocole@rpmgroup.com

**CAROLINE OTWELL**  
 (C)501.749.0330 | (O)501.664.7807  
 cotwell@rpmgroup.com

1501 N. University Avenue, Ste. 800  
 Little Rock, AR 72207  
 501.664.7807 | www.rpmgroup.com