

# 150

# Grand Street

**Leasing Update**  
Four Spaces Just Leased  
Two Renewed  
Only Six Spaces Left

**Quality Office Space**  
**White Plains CBD**  
**Free Visitor Parking**  
**Priced To Lease**



These are our asking rents.  
Let's see what we can do for you.

Suite	SF	Rent/Mo *
301	1,563	\$ 4,037.75
303	<b>LEASED</b>	<b>\$ 4,133.33</b>
304	2,836	\$ 7,326.33
400	3,261	\$ 8,424.25
401	1,474	\$ 3,807.83
400-401	4,735	\$ 12,232.08
402	<b>LEASED</b>	<b>\$ 5,957.17</b>
403	<b>LEASED</b>	<b>\$ 4,598.33</b>
405	<b>LEASED</b>	<b>\$ 5,223.50</b>
501	2,125	\$ 5,489.58
605	4,356	\$ 11,253.00






\* Asking rents include tenant electric.






# Modern amenities & style to match.



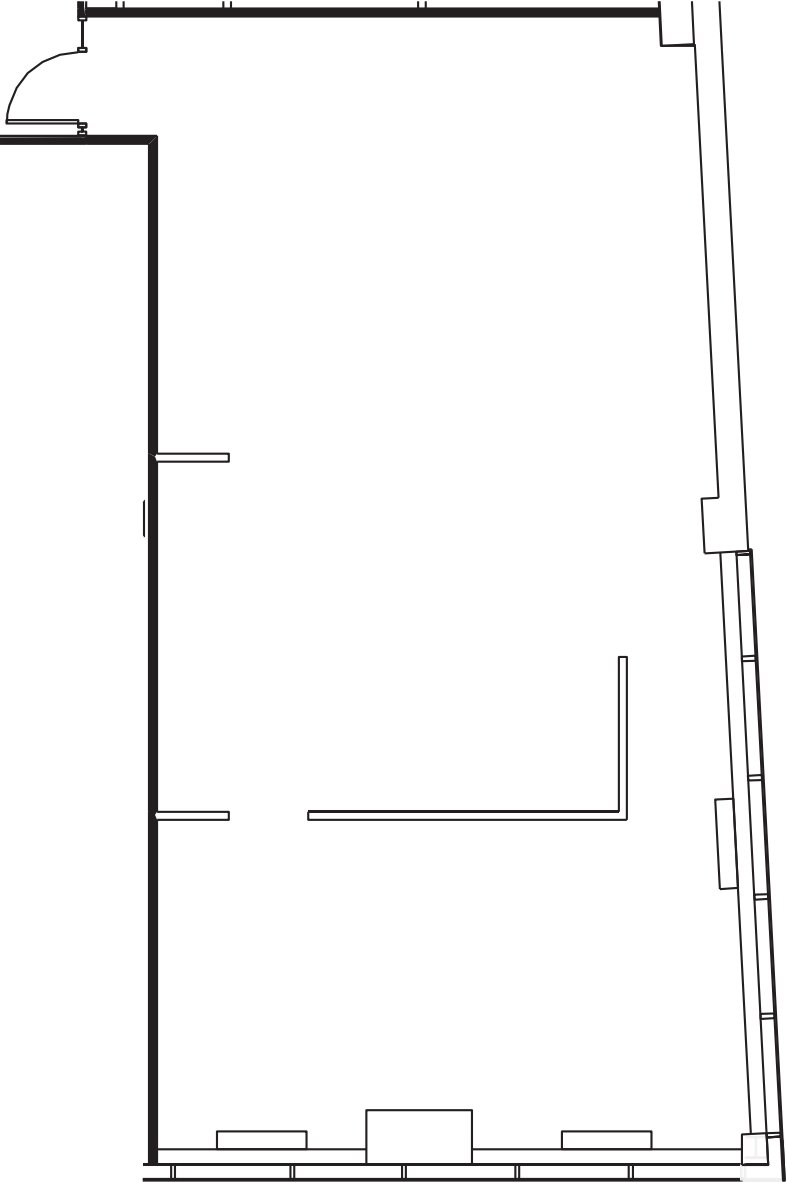
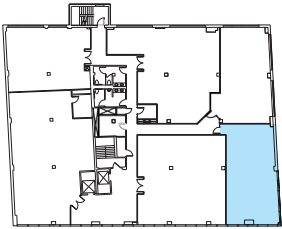
New  
Cafe  
Coming  
Soon!

-  New entrance and lobby
-  Fitness center
-  New Cafe Coming to Bldg 140
-  Covered parking
-  Free visitor parking

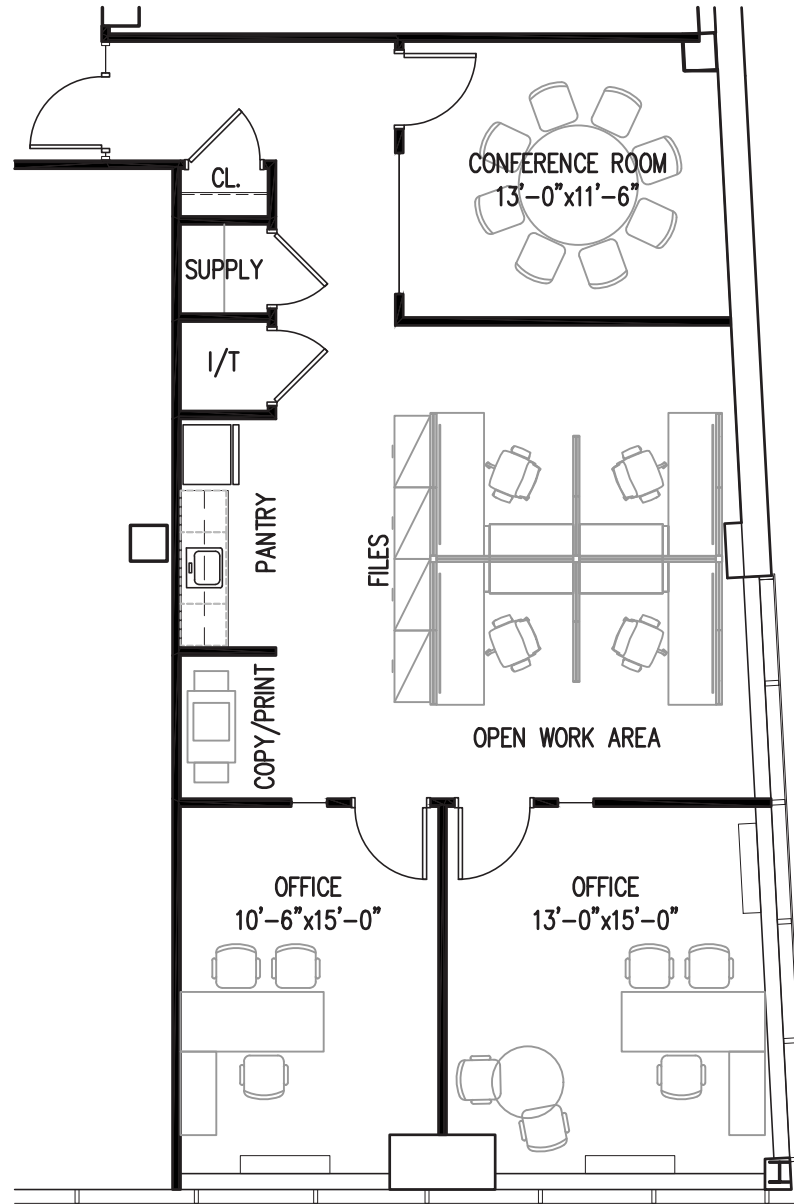
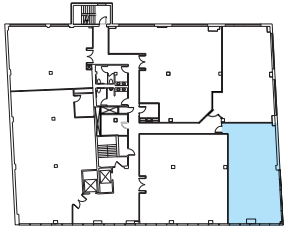
-  On-site security
-  24/7 card-key access
-  Great location  
Directly across from the Court House  
Walking distance to Metro North,  
restaurants, shopping and banks

**150 Grand Street**  
**Floor 3 | Suite 301**  
**1,563 SF**

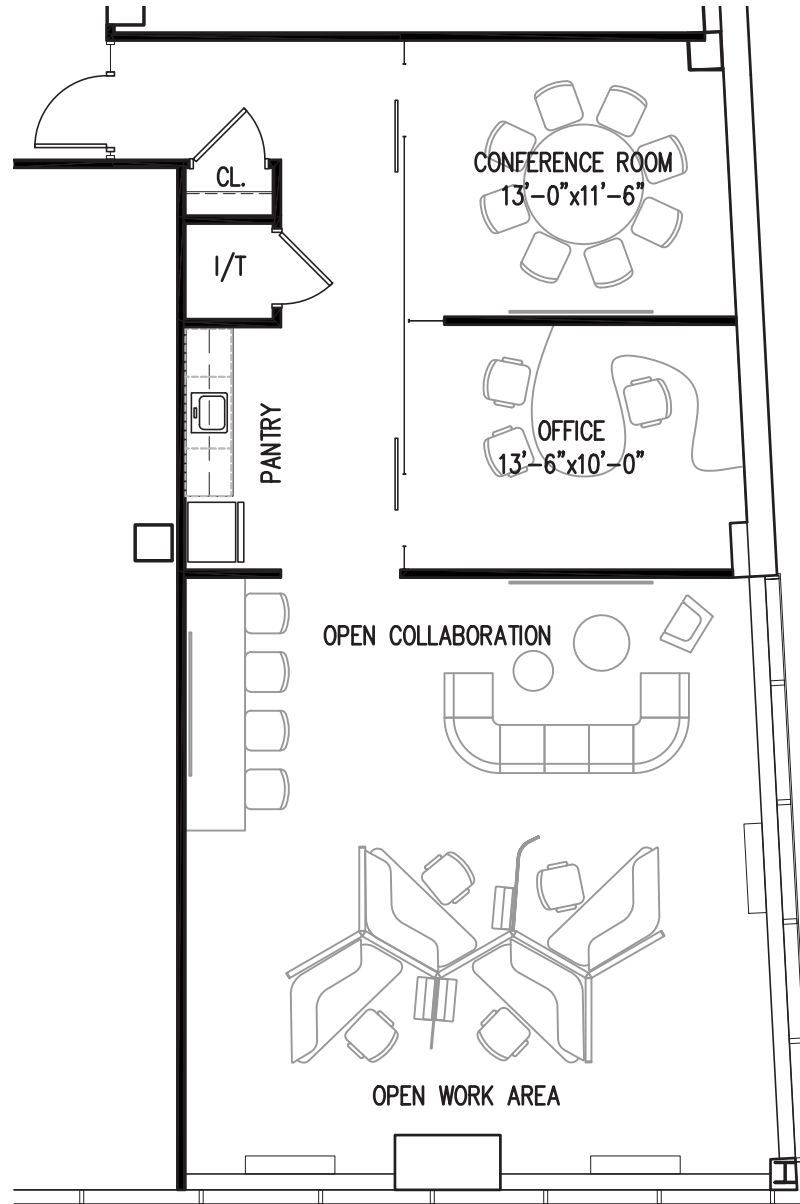
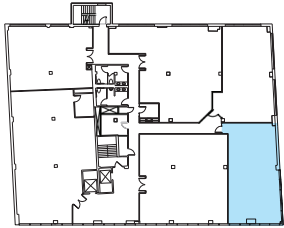
**Existing Conditions**



150 Grand Street  
Floor 3 | Suite 301  
1,563 SF

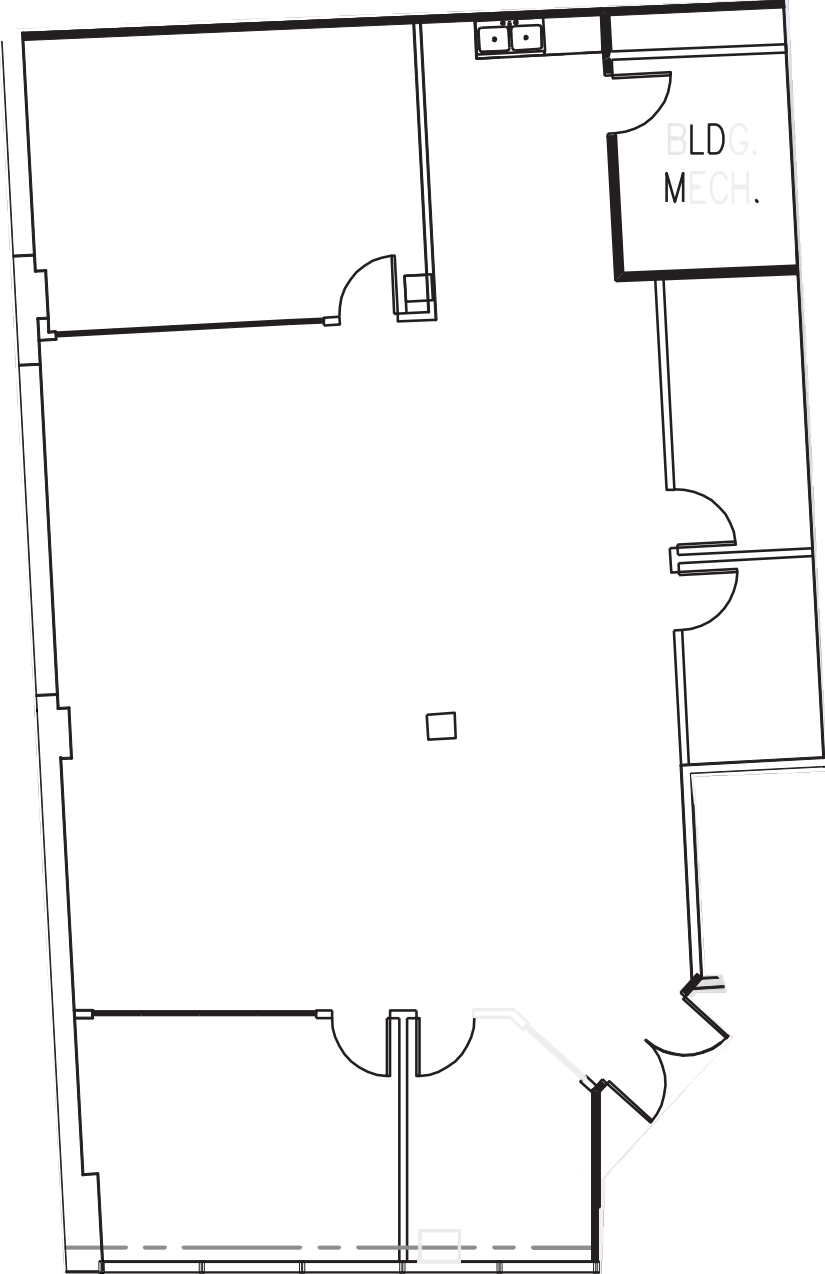
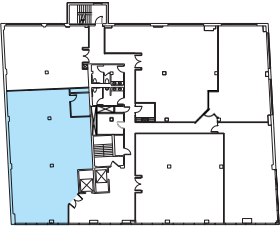


150 Grand Street  
Floor 3 | Suite 301  
1,563 SF

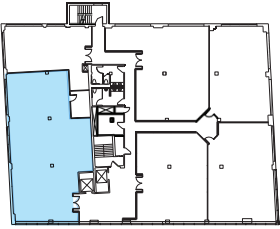


**150 Grand Street  
Floor 3 | Suite 304  
2,836 SF**

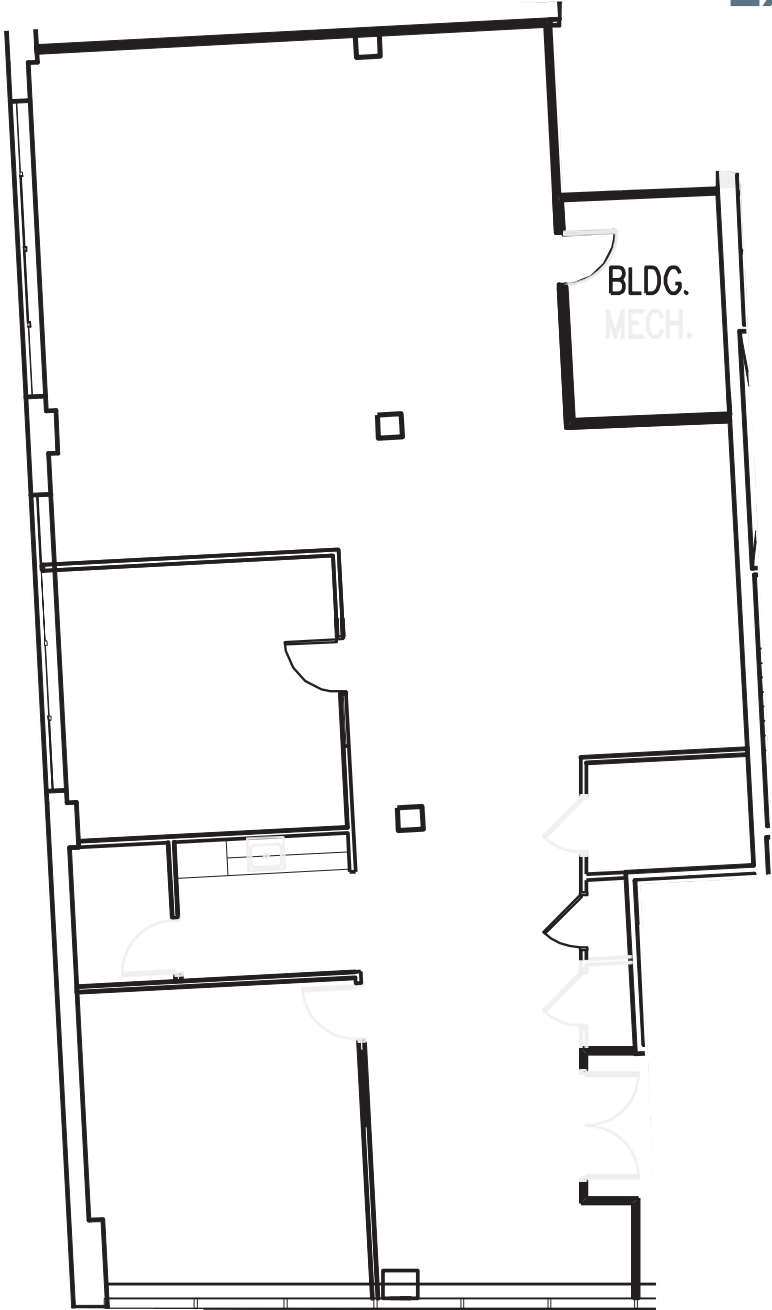
**Existing Conditions**



**150 Grand Street  
Floor 4 | Suite 400  
3,261 SF**

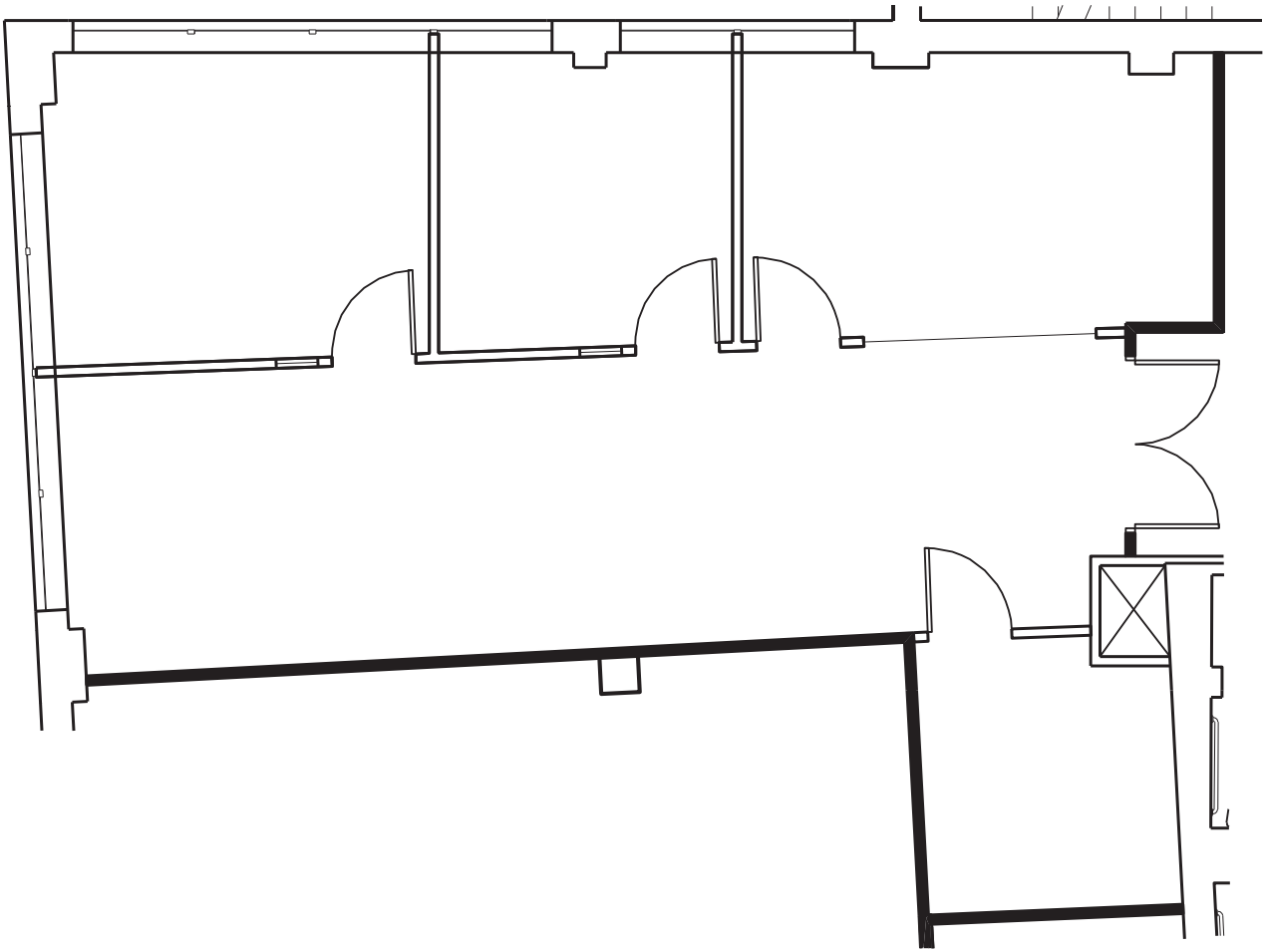
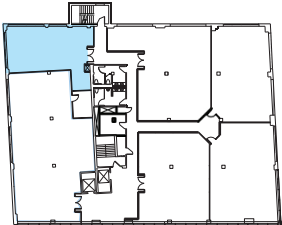


**Existing Conditions**

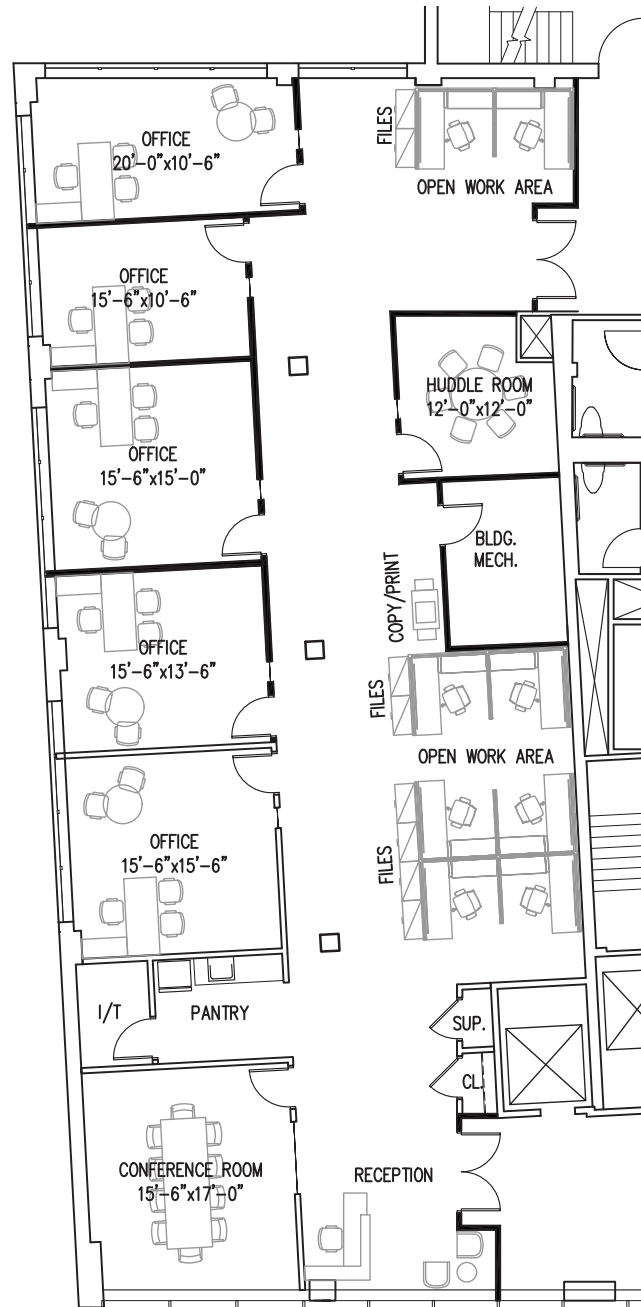
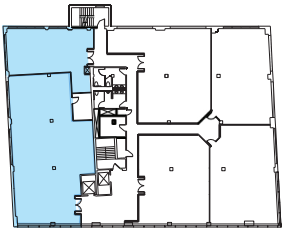


**150 Grand Street**  
**Floor 4 | Suite 401**  
**1,474 SF**

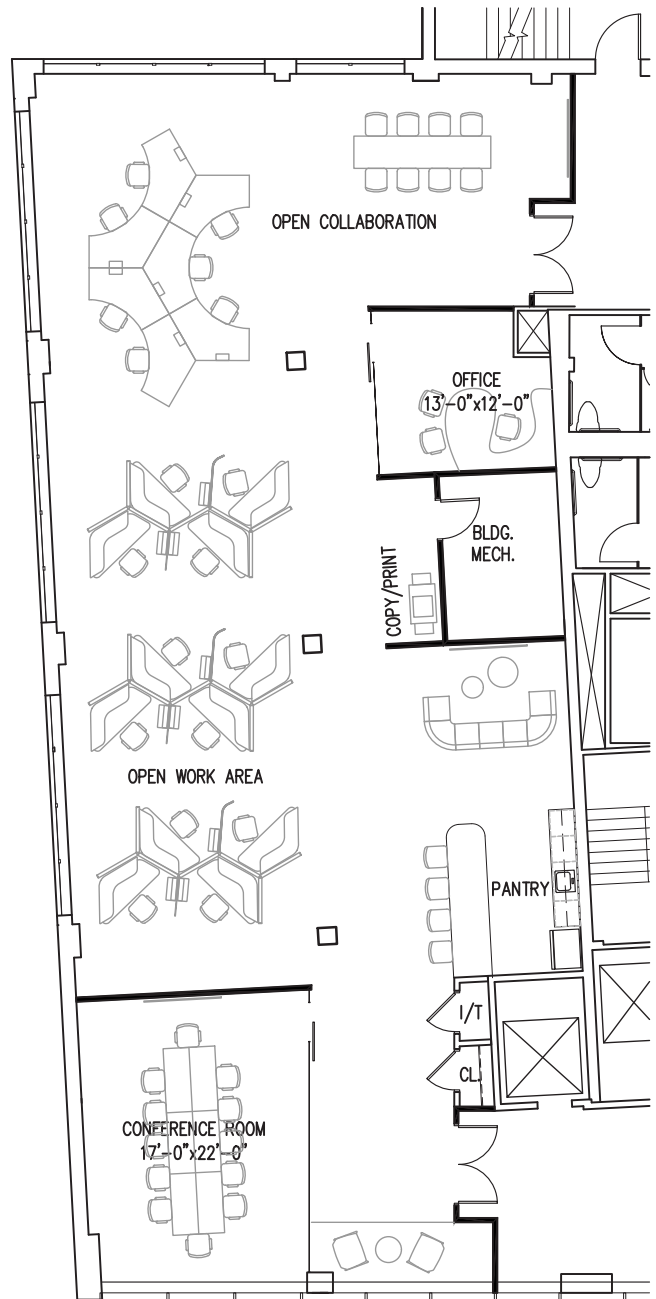
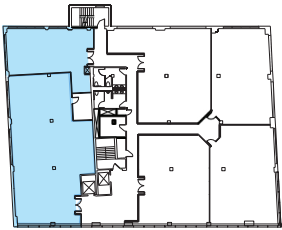
**Existing Conditions**



150 Grand Street  
Floor 4 | Suites 400 + 401  
4,735 SF

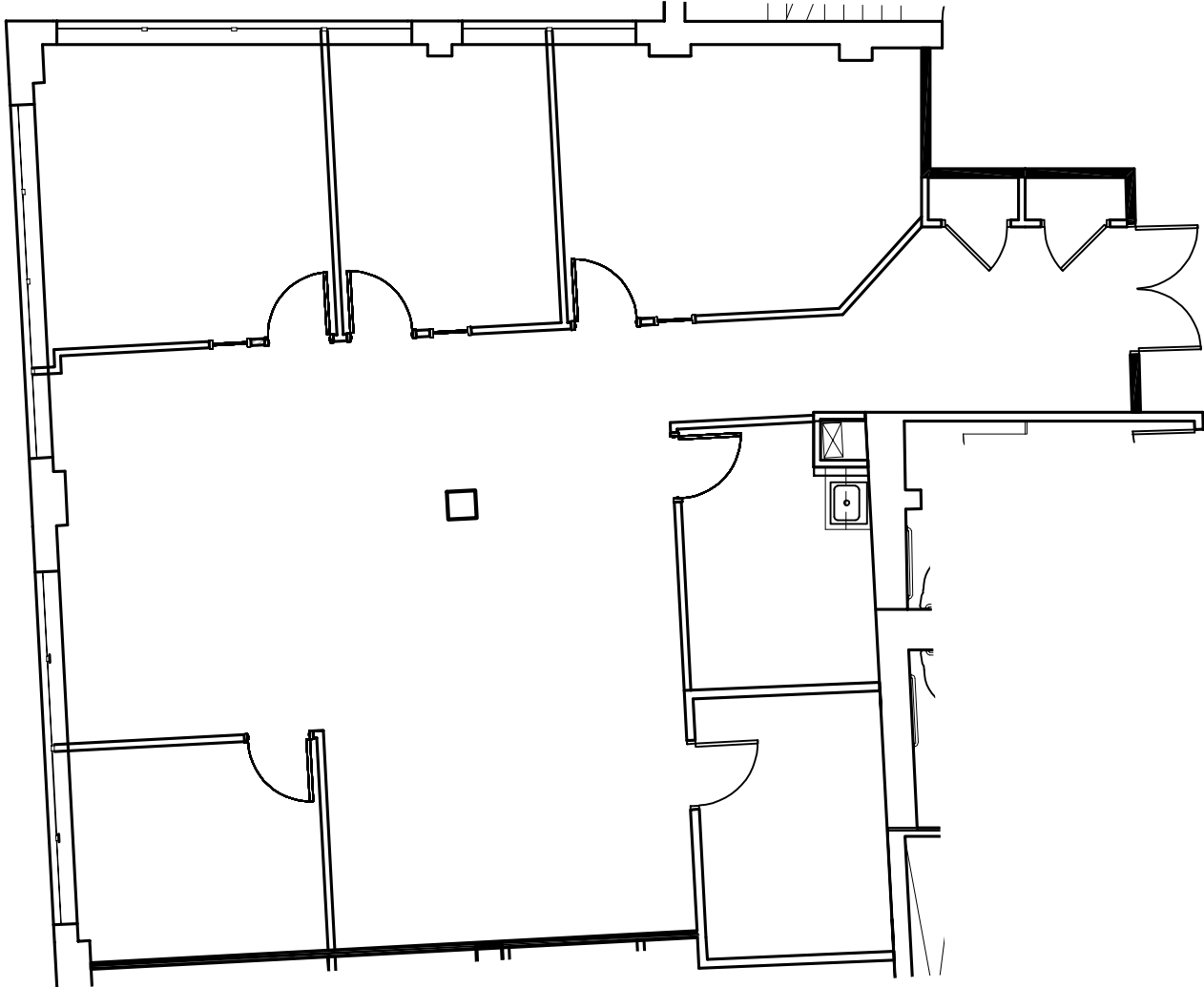
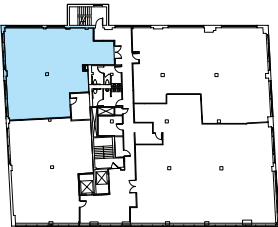


150 Grand Street  
Floor 4 | Suites 400 + 401  
4,735 SF



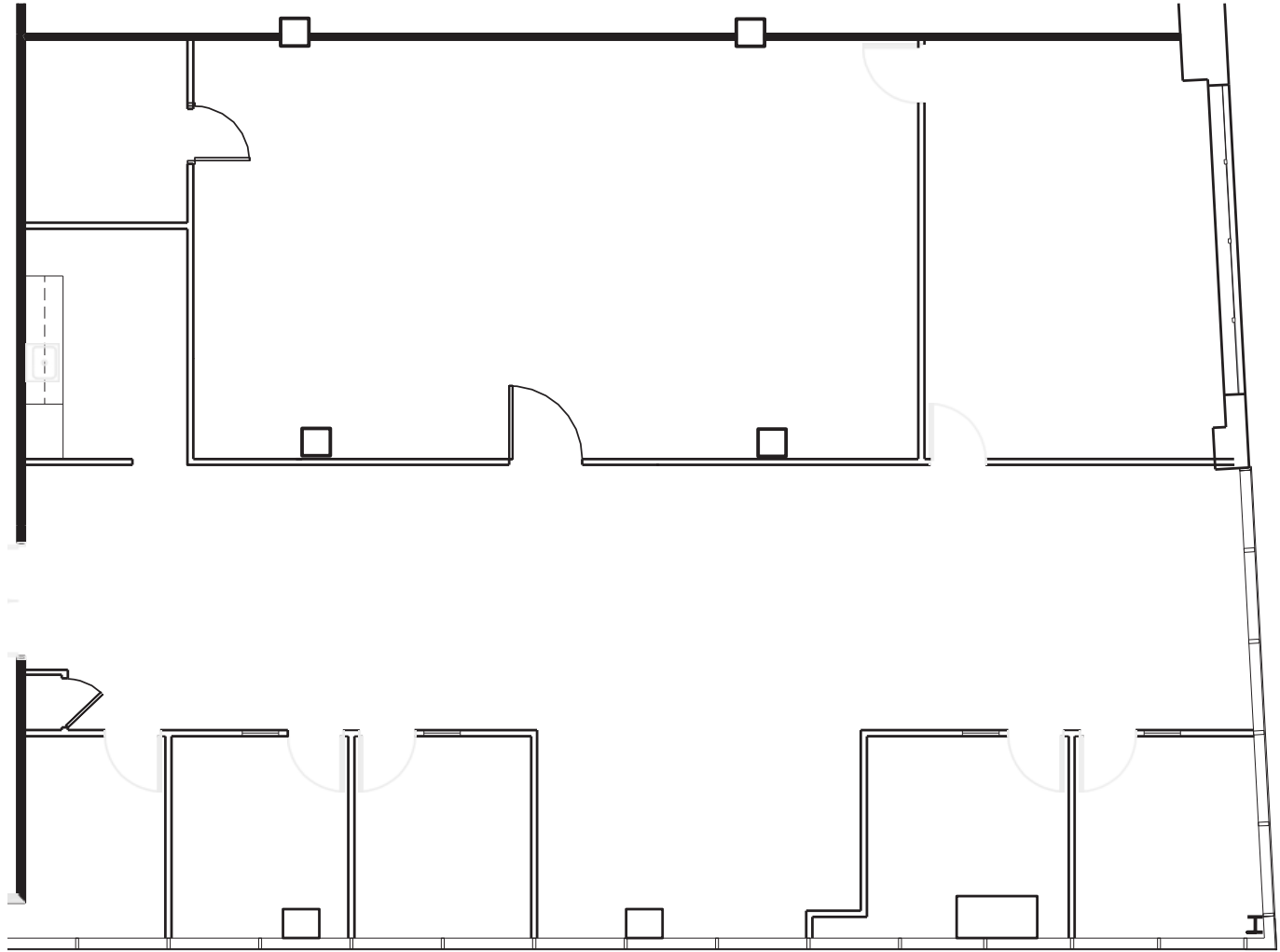
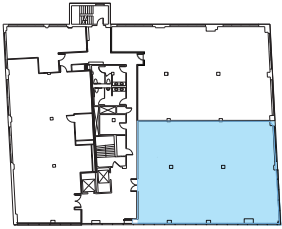
**150 Grand Street  
Floor 5 | Suite 501  
2,125 SF**

**Existing Conditions**



**150 Grand Street**  
**Floor 6 | Suite 605**  
**4,356 SF**

**Existing Conditions**



# Great location



Directly across from the Court House  
Walking distance to Metro North, restaurants,  
shopping and banks



# 150 Grand Street

White Plains, NY

**Robert Lella**

Senior Vice President

914 439 4597

robert.lella@colliers.com

**Craig S. Ruoff**

Executive Vice President

914 441 7688

craig.ruoff@colliers.com

**Daniel Mundle**

Associate

203 543 2872

daniel.mundle@colliers.com



**COLLIERS INTERNATIONAL CT, LLC**  
**1055 WASHINGTON BOULEVARD**  
**STAMFORD, CT 06901**

No representation is made as to the accuracy of the information furnished herein and same is submitted subject to errors, omissions, change of prices, rental, or other conditions, prior sale, lease, sublease, and/or withdrawal without notice. While every attempt is made to ensure accuracy, the floor plan(s) is for guidance only. The measurements, dimensions, specifications, and other data shown are approximate and may not be to scale. We assume no responsibility for the accuracy of the floor plan(s) or for any action taken in reliance thereon. The floor plan(s) do not create any representation, warranty or contract. All parties should consult a professional, such as an architect, to verify the information contained herein. The furnishing of this information shall not be deemed a hiring. A commission in accordance with our principal's schedule of rates and conditions will be paid to the procuring Broker who executes our or our principal's brokerage agreement, subject to a fully consummated transaction upon terms and conditions acceptable to our principal.  
Colliers International CT, LLC