

1114 E  
PIKE ST  
SUITE  
200

---

12  
& P

12TH & PIKE  
BUILDING

Madrona

## **BUILDING INFORMATION**

**ADDRESS:** 1114 E PIKE STREET  
SUITE 200, SEATTLE, WA 98122

**AVAILABLE:** 2,581 RENTABLE  
SQUARE FEET

**FURNISHED**

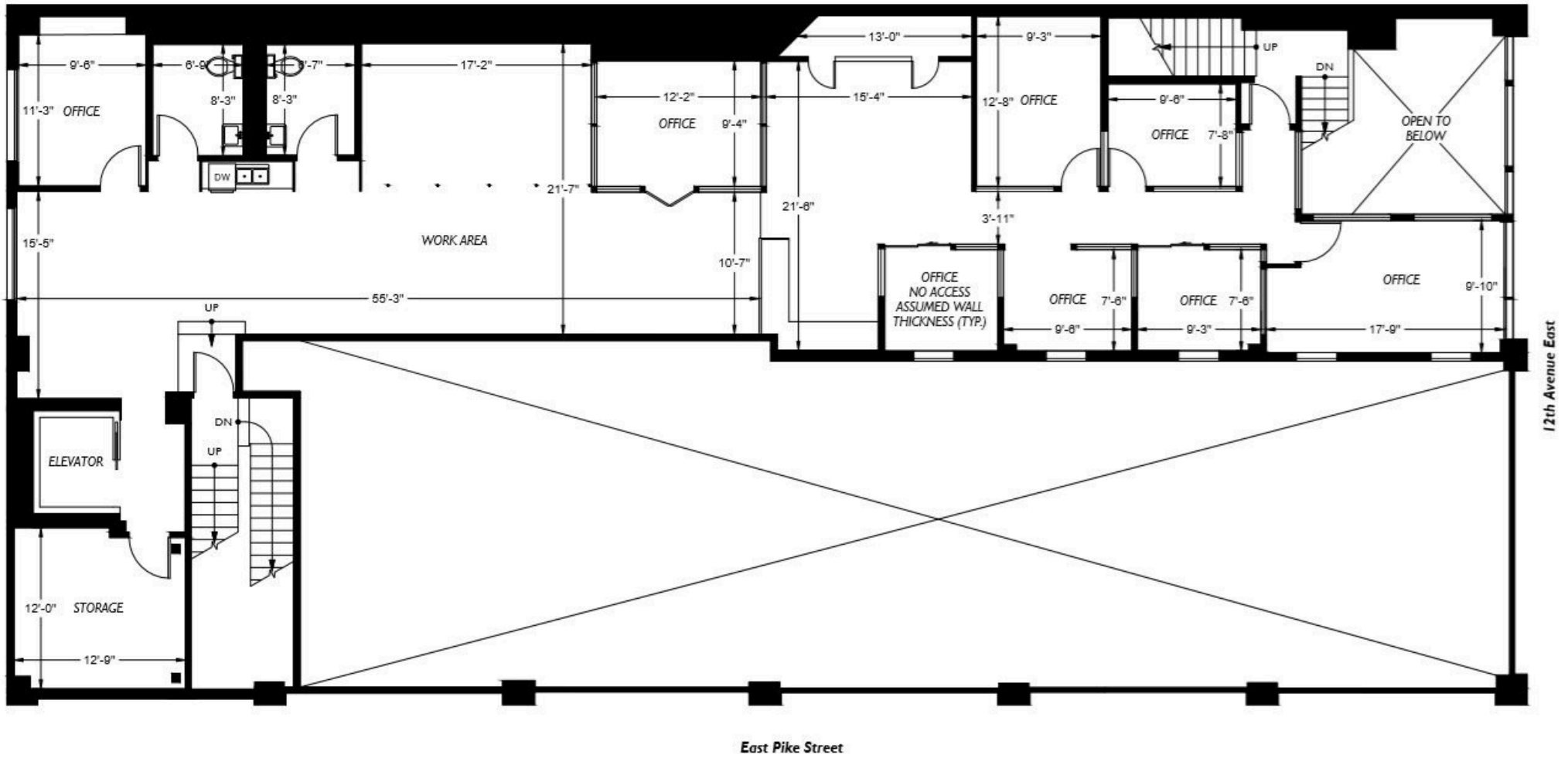
## **DESCRIPTION**

FORMER CAR DEALERSHIP  
BUILDING CONSTRUCTED IN  
1917 ON THE CORNER OF 12TH  
AND PIKE. NOW HOME TO  
OFFICE, RETAIL AND  
RESTAURANT SPACE.

## **FEATURES**

24 HOUR CONTROLLED  
ACCESS, AIR CONDITIONING,  
BICYCLE STORAGE,  
PARTITIONED OFFICES

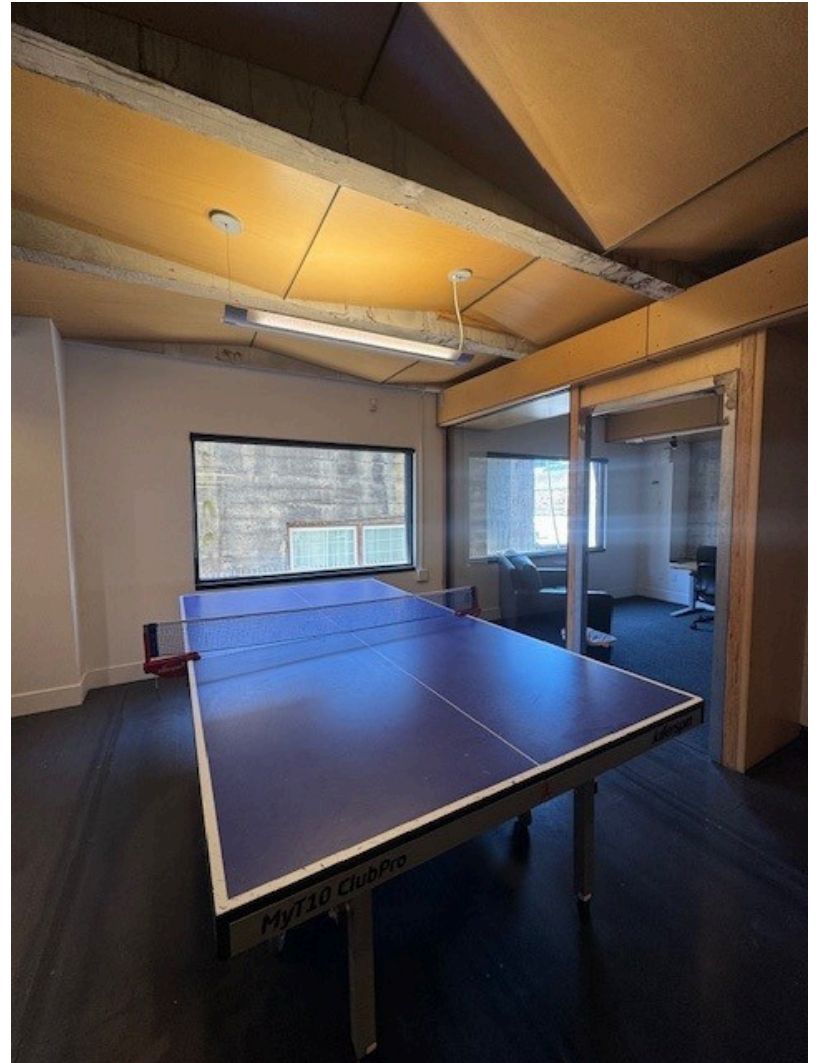






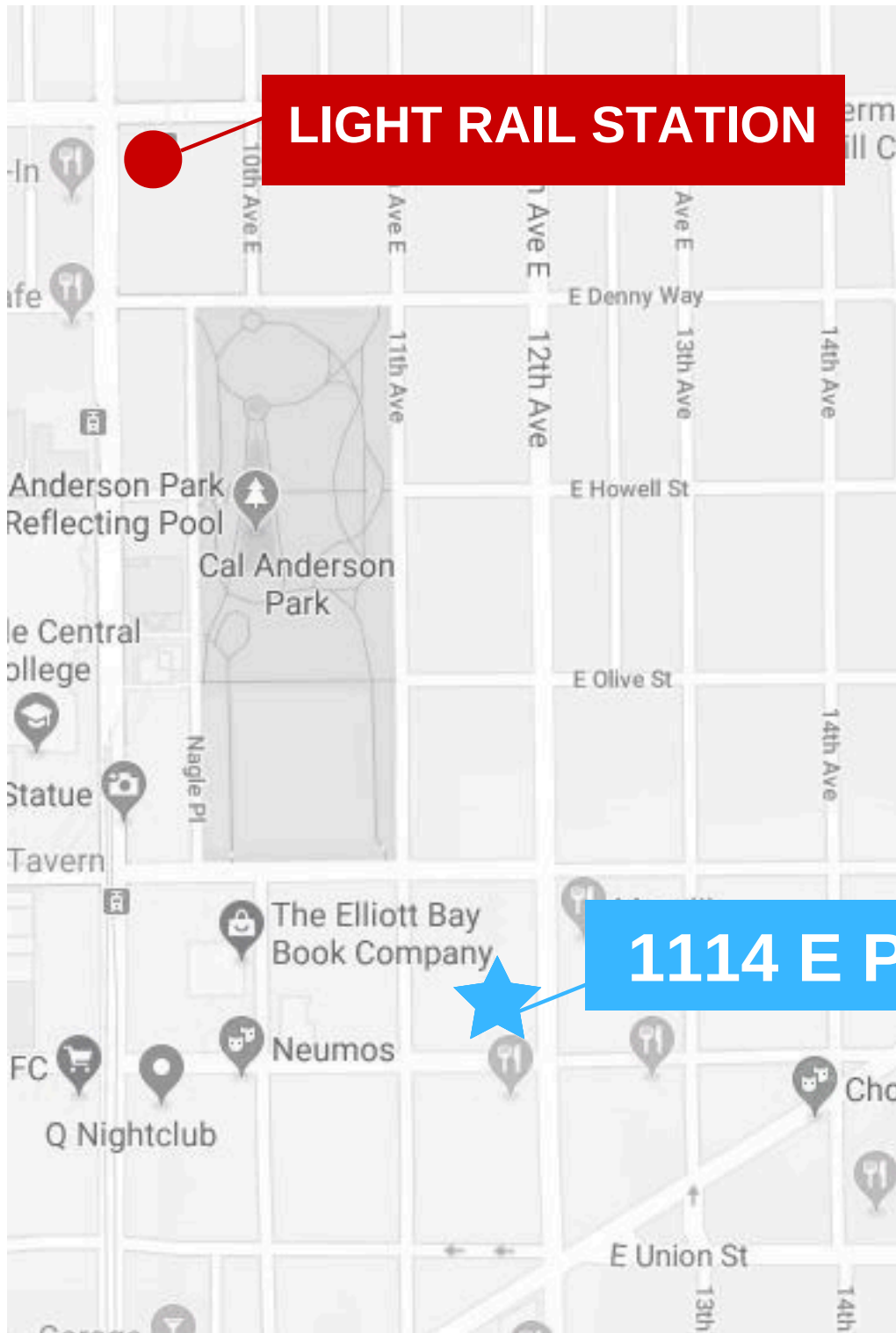
**Madrona**  
Real Estate Services, LLC











## ACCESSIBILITY

LESS THAN .5 MILE TO  
CAPITOL HILL STATION

Walk Score  
**98**

Transit Score  
**81**

Bike Score  
**90**

**FOR MORE  
INFORMATION  
PLEASE CONTACT**

**ANDREA AUGUSTINE**

ANDREAA@MADRONAREALESTATE.COM  
206.856.0250

**BRAD AUGUSTINE**

BRADA@MADRONAREALESTATE.COM  
206.538.2950