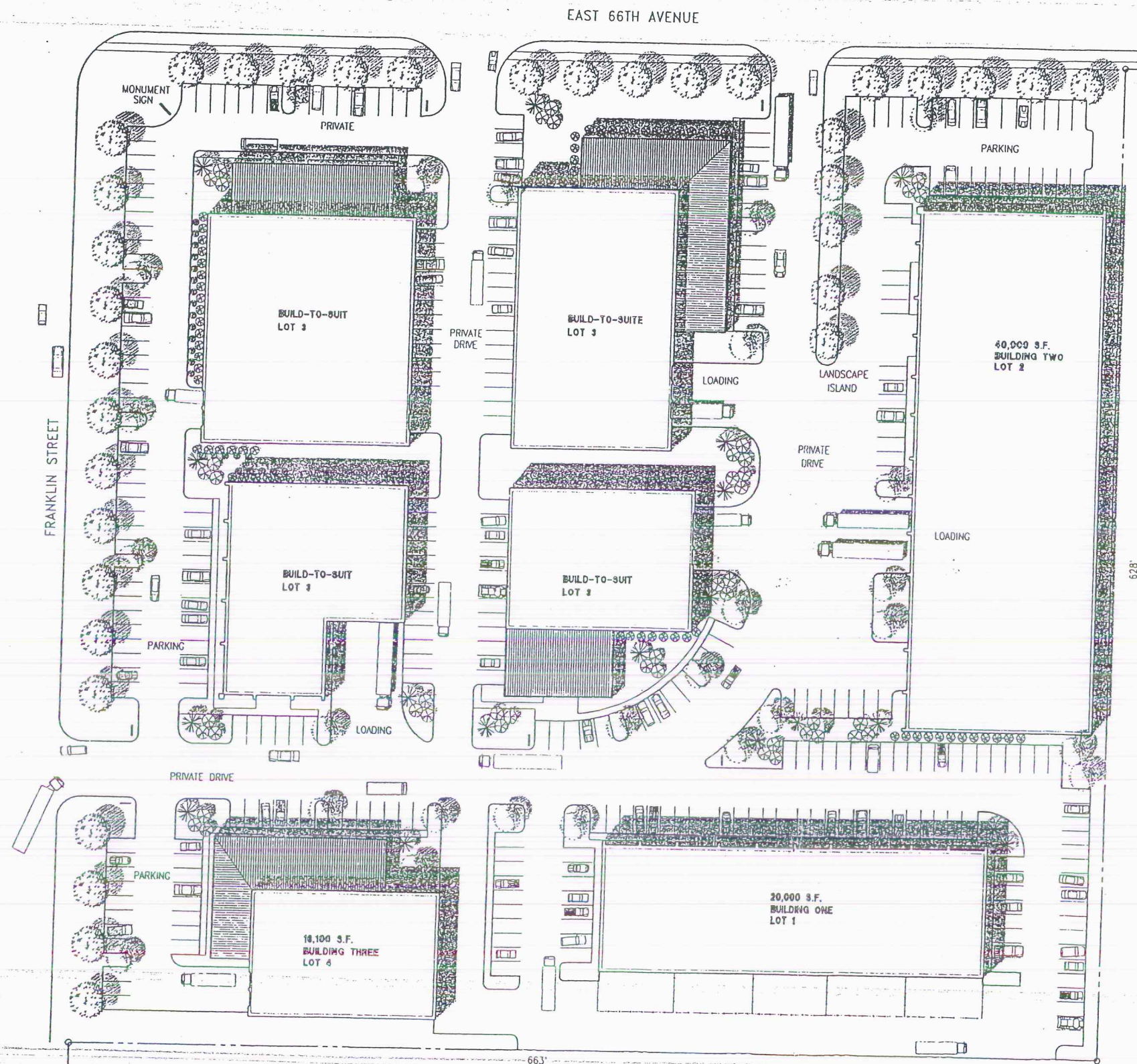


QUANTUM BUSINESS CENTER  
 PRELIMINARY P.U.D. PLAN  
 County of Adams, State of Colorado

Sheet 4 of 4

PUD 1921 P1-921

4/4



SITE DATA

| PHASE          | AREA S.F.      | ACRES / S.F.        | LOT / PARCEL |
|----------------|----------------|---------------------|--------------|
| BUILDING ONE   | 20,000         | 2.04/89,263         | 1/A          |
| BUILDING TWO   | 40,000         | 2.24/97,604         | 2/B          |
| BUILDING THREE | 16,100         | 1.01/43,923         | 4            |
| BUILD TO SUIT  | 73,900         | 4.25/184,232        | 3            |
| <b>TOTAL:</b>  | <b>150,000</b> | <b>9.56/415,022</b> |              |