

3200 Reed Avenue

WEST SACRAMENTO, CALIFORNIA

FOR LEASE



PROPERTY FEATURES

- ±10,240 SF Total Available
- ±7,240 SF of Warehouse
- ±3,000 SF of Office
- 24' Clear Height
- Fully Sprinklered (0.33/2,000 SF Per Calc Plate)
- 200 amps/480-volt/3-phase power
- Skylights
- Excellent Freeway Signage
- Interstate 80 Signage Available
- Additional On-Site Truck Parking Potentially Available



OWNED AND OPERATED BY

EASTGROUP
PROPERTIES

www.eastgroup.net

For more information, please contact:
KEVIN JASPER, SIOR | Senior Managing Director | 916.826.7276 | kevin.jasper@nrmk.com | CA RE License #01164925
SEAN MAHONEY, SIOR | Senior Managing Director | 916.569.2328 | sean.mahoney@nrmk.com | CA RE License #01332661

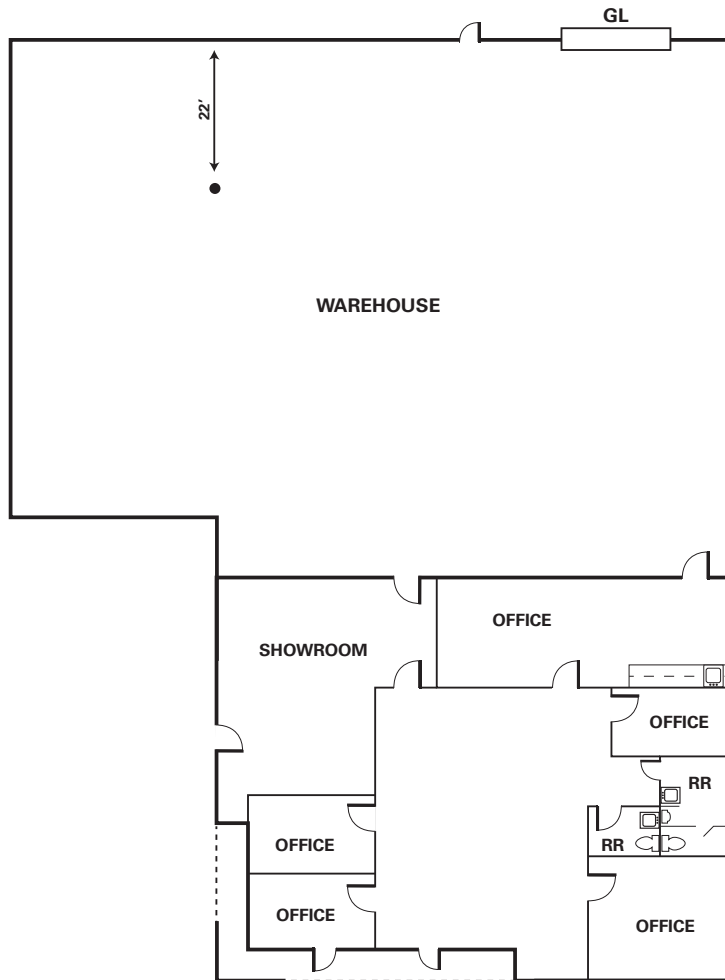
The distributor of this communication is performing acts for which a real estate license is required. The information contained herein has been obtained from sources deemed reliable but has not been verified and no guarantee, warranty or representation, either express or implied, is made with respect to such information. Terms of sale or lease and availability are subject to change or withdrawal without notice.

NEWMARK

3200 Reed Avenue

WEST SACRAMENTO, CALIFORNIA

FOR LEASE



OWNED AND OPERATED BY

EASTGROUP
PROPERTIES

www.eastgroup.net

For more information, please contact:
KEVIN JASPER, SIOR | Senior Managing Director | 916.826.7276 | kevin.jasper@nrmk.com | CA RE License #01164925
SEAN MAHONEY, SIOR | Senior Managing Director | 916.569.2328 | sean.mahoney@nrmk.com | CA RE License #01332661

The distributor of this communication is performing acts for which a real estate license is required. The information contained herein has been obtained from sources deemed reliable but has not been verified and no guarantee, warranty or representation, either express or implied, is made with respect to such information. Terms of sale or lease and availability are subject to change or withdrawal without notice. 4/25

NEWMARK