

# A-601

CREATED ON  
2025-05-05

<b>Total area</b> 1773.31 sq ft	<b>Floors</b> 1	<b>Rooms</b> 7	<b>Conference room</b> 1
------------------------------------	--------------------	-------------------	-----------------------------

## Photos

8 Photos (see photos page)

# A-601

TOTAL AREA: 1773.31 sq ft • LIVING AREA: 1773.31 sq ft • FLOORS: 1 • ROOMS: 7



## ▼ Photos/A-601



THIS FLOOR PLAN IS PROVIDED WITHOUT WARRANTY OF ANY KIND. SENSOPIA DISCLAIMS ANY WARRANTY INCLUDING, WITHOUT LIMITATION, SATISFACTORY QUALITY OR ACCURACY OF DIMENSIONS.

# A-601

TOTAL AREA: 1773.31 sq ft • LIVING AREA: 1773.31 sq ft • FLOORS: 1 • ROOMS: 7

---



## ▼ Photos/A-601



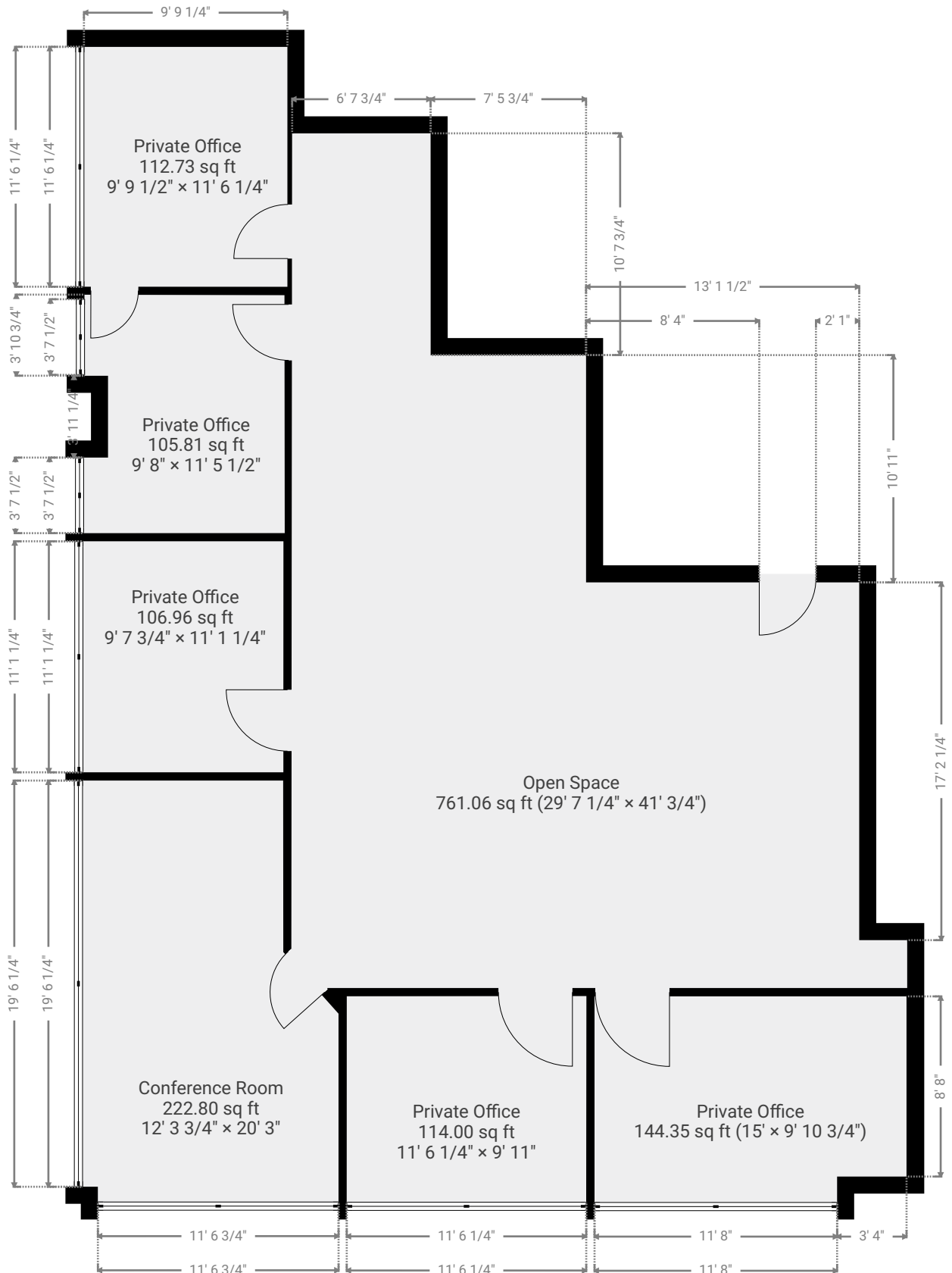
# A-601

TOTAL AREA: 1773.31 sq ft • LIVING AREA: 1773.31 sq ft • FLOORS: 1 • ROOMS: 7



## ▼ 6th Floor

TOTAL AREA: 1773.31 sq ft • LIVING AREA: 1773.31 sq ft • ROOMS: 7



THIS FLOOR PLAN IS PROVIDED WITHOUT WARRANTY OF ANY KIND. SENSOPIA DISCLAIMS ANY WARRANTY INCLUDING, WITHOUT LIMITATION, SATISFACTORY QUALITY OR ACCURACY OF DIMENSIONS.



1:84

# A-601

TOTAL AREA: 1773.31 sq ft • LIVING AREA: 1773.31 sq ft • FLOORS: 1 • ROOMS: 7

---



## ▼ 6th Floor

### Photo

1 Photo (see photos page)

# A-601

TOTAL AREA: 1773.31 sq ft • LIVING AREA: 1773.31 sq ft • FLOORS: 1 • ROOMS: 7

---



## ▼ Photos/6th Floor



---

THIS FLOOR PLAN IS PROVIDED WITHOUT WARRANTY OF ANY KIND. SENSOPIA DISCLAIMS ANY WARRANTY INCLUDING, WITHOUT LIMITATION, SATISFACTORY QUALITY OR ACCURACY OF DIMENSIONS.

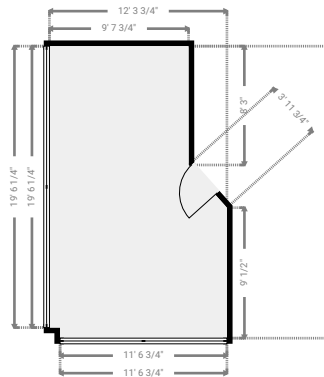
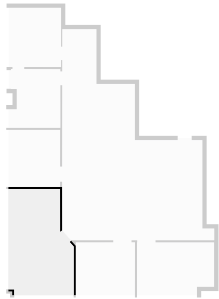
# A-601

TOTAL AREA: 1773.31 sq ft • LIVING AREA: 1773.31 sq ft • FLOORS: 1 • ROOMS: 7



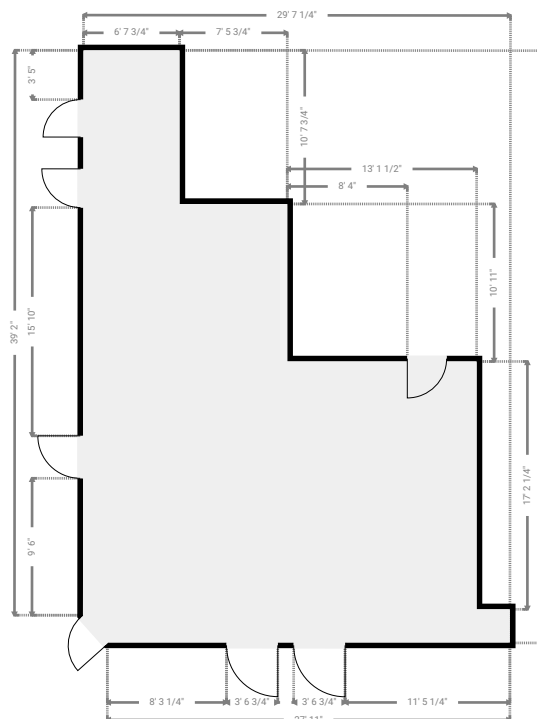
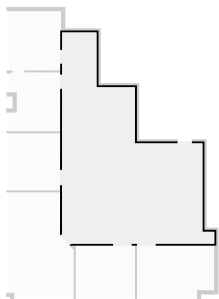
## ▼ Conference Room 6th Floor

WIDTH: 12' 3 3/4" • LENGTH: 20' 3" • CEILING HEIGHT: 8' 9 1/4"  
AREA: 222.80 sq ft • PERIMETER: 63' 5 1/2"

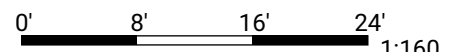


## ▼ Open Space 6th Floor

WIDTH: 29' 7 1/4" • LENGTH: 41' 3/4" • CEILING HEIGHT: 8' 9 1/4"  
AREA: 761.06 sq ft • PERIMETER: 140' 3"



THIS FLOOR PLAN IS PROVIDED WITHOUT WARRANTY OF ANY KIND. SENSOPIA DISCLAIMS ANY WARRANTY INCLUDING, WITHOUT LIMITATION, SATISFACTORY QUALITY OR ACCURACY OF DIMENSIONS.



# A-601

TOTAL AREA: 1773.31 sq ft • LIVING AREA: 1773.31 sq ft • FLOORS: 1 • ROOMS: 7

---



## ▼ Open Space/6th Floor

### Photo

1 Photo (see photos page)

# A-601

TOTAL AREA: 1773.31 sq ft • LIVING AREA: 1773.31 sq ft • FLOORS: 1 • ROOMS: 7

---



## ▼ Photos/Open Space



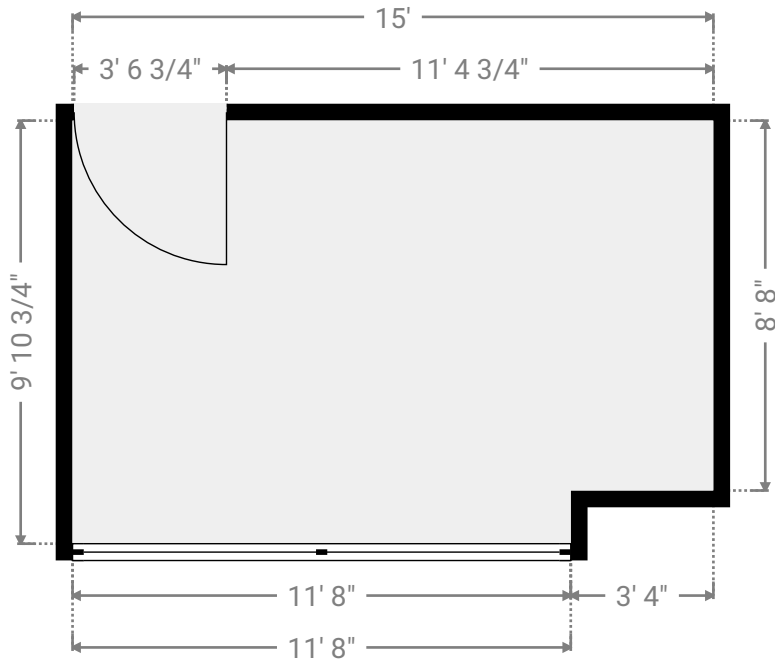
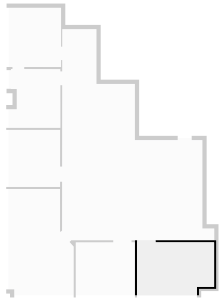
# A-601

TOTAL AREA: 1773.31 sq ft • LIVING AREA: 1773.31 sq ft • FLOORS: 1 • ROOMS: 7



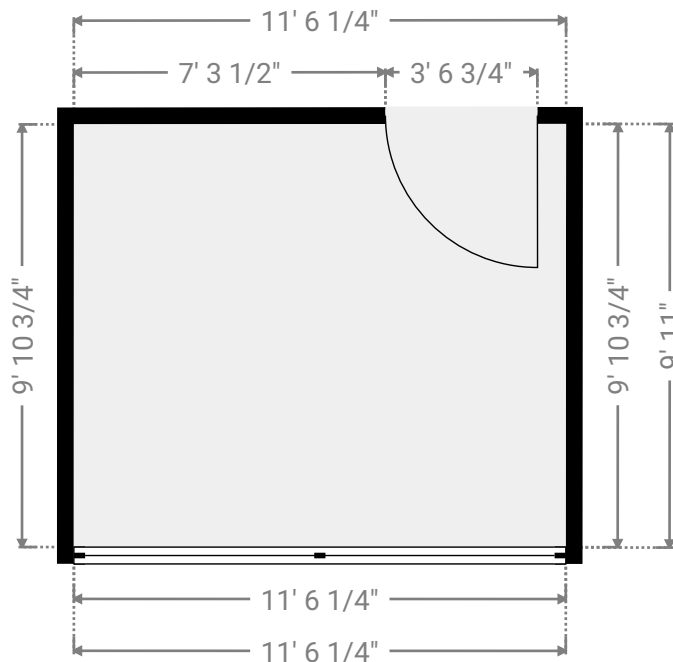
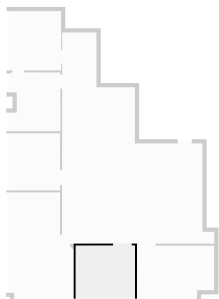
## ▼ Private Office 6th Floor

WIDTH: 15' • LENGTH: 9' 10 3/4" • CEILING HEIGHT: 8' 9 1/4"  
AREA: 144.35 sq ft • PERIMETER: 49' 9 1/2"

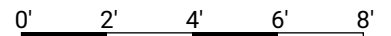


## ▼ Private Office 6th Floor

WIDTH: 11' 6 1/4" • LENGTH: 9' 11" • CEILING HEIGHT: 8' 9 1/4"  
AREA: 114.00 sq ft • PERIMETER: 42' 10"



THIS FLOOR PLAN IS PROVIDED WITHOUT WARRANTY OF ANY KIND. SENSOPIA DISCLAIMS ANY WARRANTY INCLUDING, WITHOUT LIMITATION, SATISFACTORY QUALITY OR ACCURACY OF DIMENSIONS.



1:54

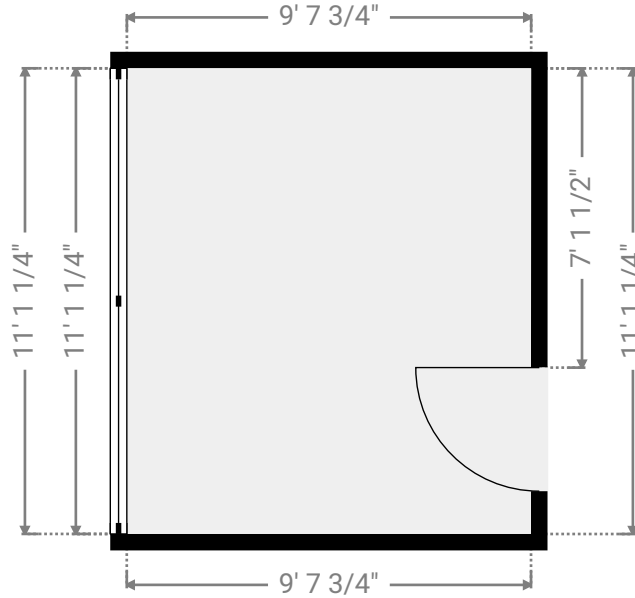
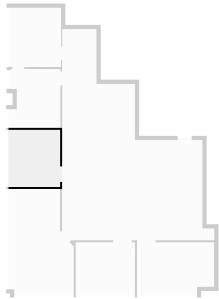
# A-601

TOTAL AREA: 1773.31 sq ft • LIVING AREA: 1773.31 sq ft • FLOORS: 1 • ROOMS: 7



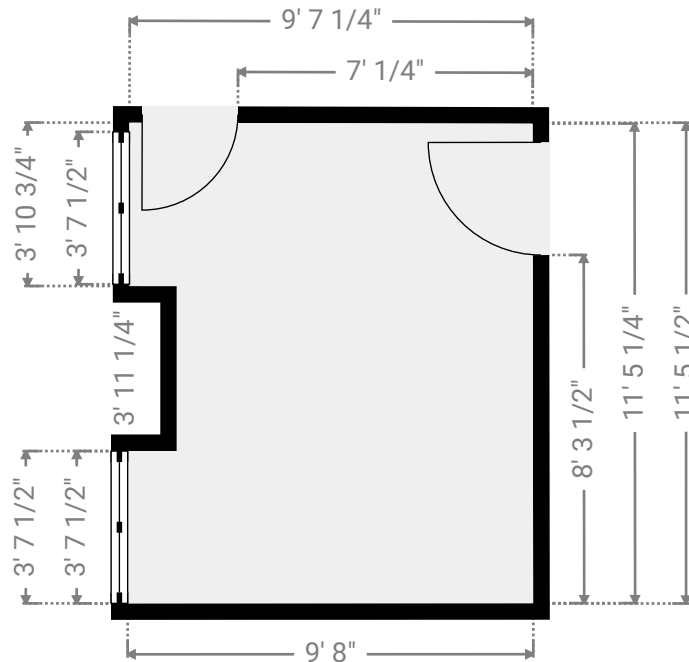
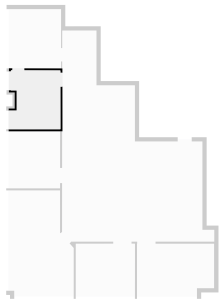
## ▼ Private Office 6th Floor

WIDTH: 9' 7 3/4" • LENGTH: 11' 1 1/4" • CEILING HEIGHT: 8' 9 1/4"  
AREA: 106.96 sq ft • PERIMETER: 41' 5 3/4"

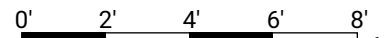


## ▼ Private Office 6th Floor

WIDTH: 9' 8" • LENGTH: 11' 5 1/2" • CEILING HEIGHT: 8' 9 1/4"  
AREA: 105.81 sq ft • PERIMETER: 44' 5 3/4"



THIS FLOOR PLAN IS PROVIDED WITHOUT WARRANTY OF ANY KIND. SENSOPIA DISCLAIMS ANY WARRANTY INCLUDING, WITHOUT LIMITATION, SATISFACTORY QUALITY OR ACCURACY OF DIMENSIONS.



1:55

# A-601

TOTAL AREA: 1773.31 sq ft • LIVING AREA: 1773.31 sq ft • FLOORS: 1 • ROOMS: 7



## ▼ Private Office 6th Floor

WIDTH: 9' 9 1/2" • LENGTH: 11' 6 1/4" • CEILING HEIGHT: 8' 9 1/4"  
AREA: 112.73 sq ft • PERIMETER: 42' 7 1/4"

