

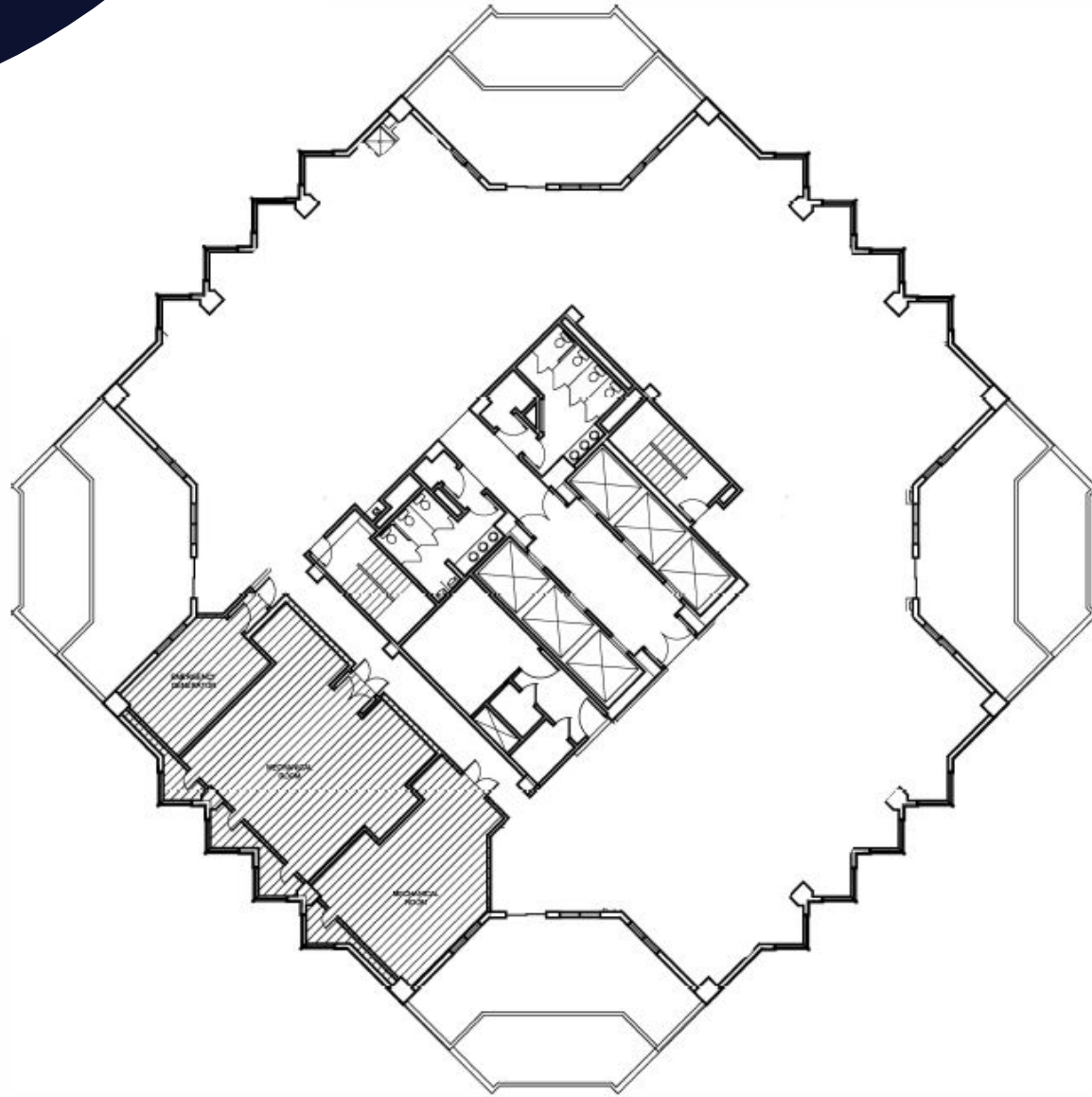


3800
Howard Hughes Parkway

Suite 1800
White Box
±9,873 RSF



saltmine
**3D Space
Planning Tool**



**CUSHMAN &
WAKEFIELD**

Charles W. Van Geel
Director
+1 702 581 1963
Charles.VanGeel@cushwake.com
LIC. #0044616

**HUGHES
CENTER**