

2725 Glenside Boulevard

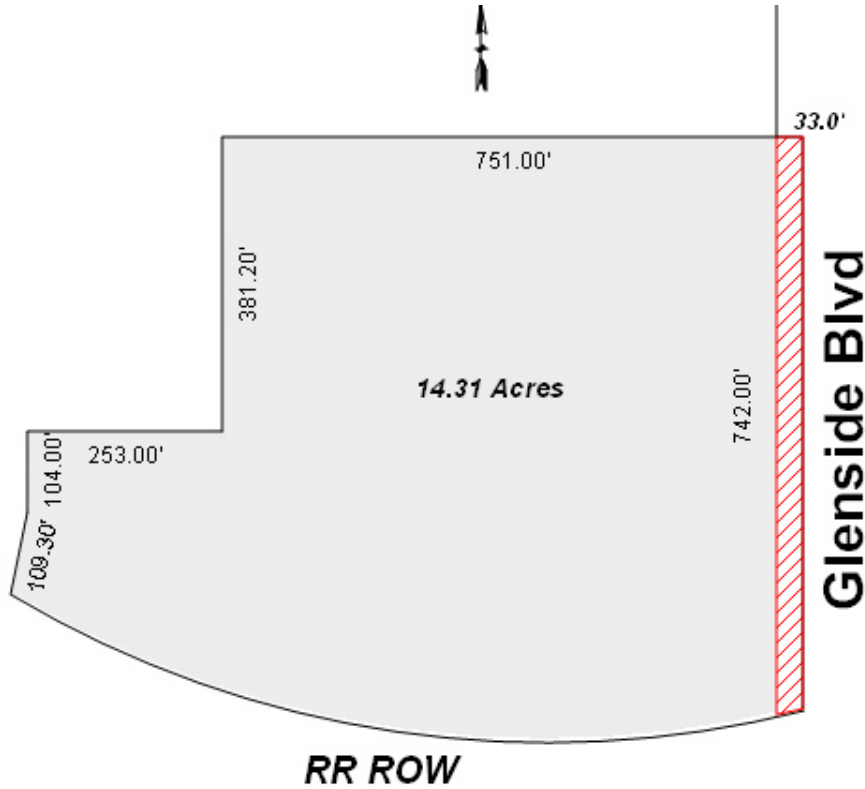
Muskegon, MI 49441

± 14.31 Acres | Industrial-Zoned Land | Redevelopment Potential



Contact Us

Drew Miller, MCR
Senior Vice President
+1 616 437 7020
drew.miller2@cbre.com



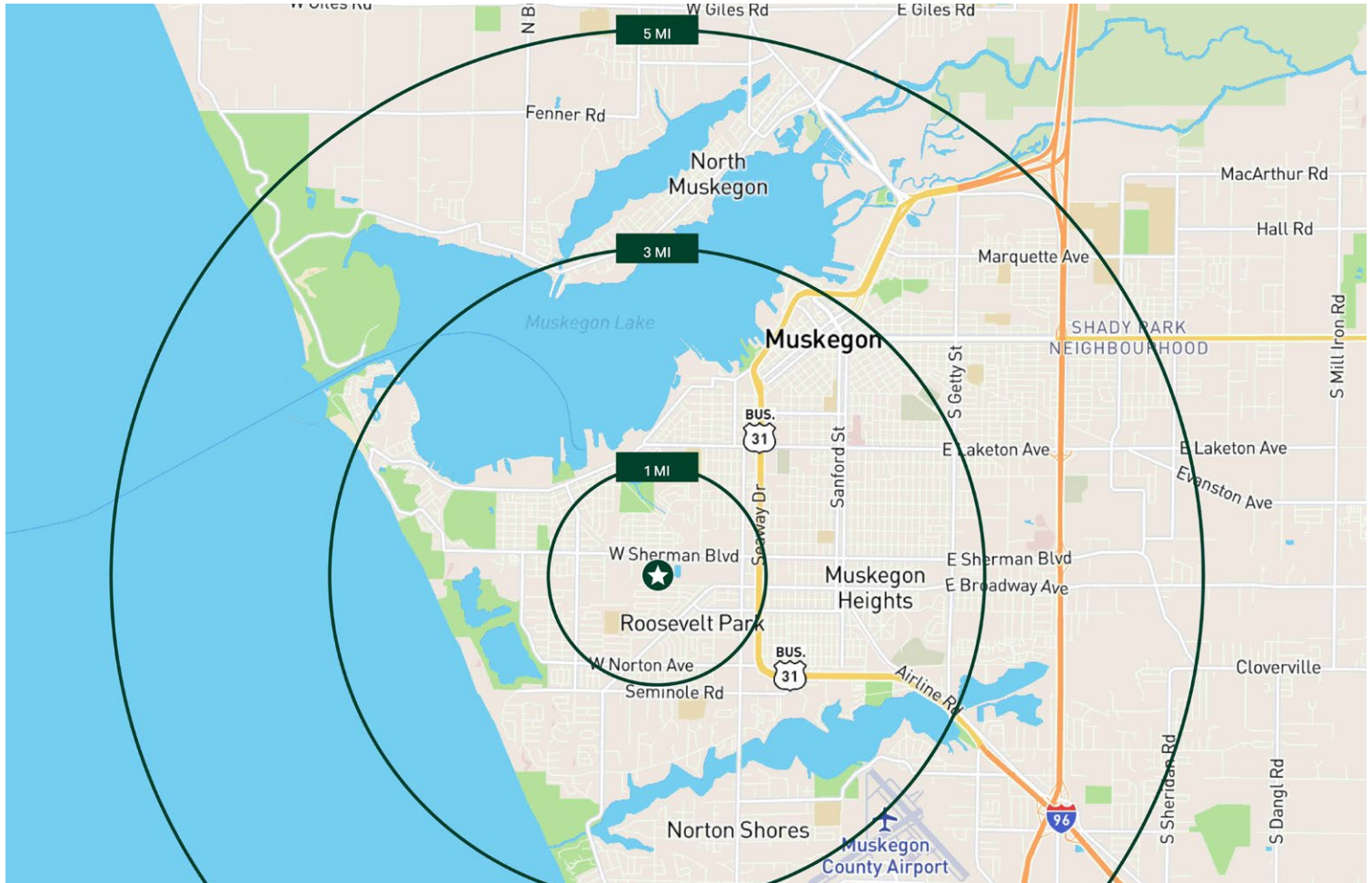
Industrial Redevelopment Opportunity

This prime 14.31-acre industrial-zoned property offers an unparalleled redevelopment opportunity for \$450,000. Located in the “infill Muskegon” area of Roosevelt Park, where developable land is scarce, this expansive parcel provides ample space for manufacturing or modern industrial development. Benefiting from I-W (Industry West) zoning, easy accessibility, and all essential utilities, it’s a strategic investment. With a secure, fenced parcel outside the 500-year floodplain, and close proximity to a skilled labor pool and an established amenity base.

Property Highlights

- + Parcel Number: 25-001-0002-00
- + Municipality: City of Roosevelt Park, Muskegon County
- + Zoning: I-W
- + Land Size: 14.31 +/- Acres
- + Pricing: **\$450,000**

Demographics



2025	1 mile	3 miles	5 miles
Population	10,147	49,565	85,707
Businesses	391	1,833	3,080
Households	4,732	4,732	36,149
Avg Household Income	\$70,816	\$71,594	\$74,587
Median Household Income	\$59,418	\$53,463	\$56,714
Median Age	41.5	40.4	40.6
Bachelor's Degree +	20.8%	23.7%	24.3%

© 2026 CBRE, Inc. All rights reserved. This information has been obtained from sources believed reliable, but has not been verified for accuracy or completeness. You should conduct a careful, independent investigation of the property and verify all information. Any reliance on this information is solely at your own risk. CBRE and the CBRE logo are service marks of CBRE, Inc. All other marks displayed on this document are the property of their respective owners, and the use of such logos does not imply any affiliation with or endorsement of CBRE. Photos herein are the property of their respective owners. Use of these images without the express written consent of the owner is prohibited.

