

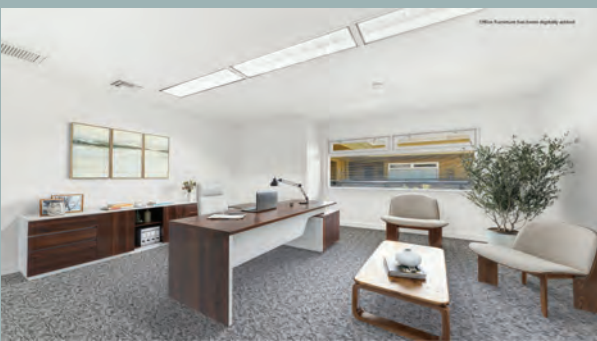
# 3611 Motor Ave., Los Angeles Office for Lease, Suite 200 & Suite 205



Located in one of the nicest buildings in the Motor Ave. area  
Minutes from the Santa Monica Freeway  
Beautiful and relaxing courtyard  
This superb office suite offers a great floor plan  
Substantially Remodeled in 2026

\* PREMISES: 3,535 Square Feet Total  
Can be divided to 1,748 SF & 1,787 SF  
\* RENT: \$2.50 SF MG Per Month  
\* Near Sony Studios

\* TERM: 2-3 Years  
\* PARKING: 2 Spaces / Per 1,000 SF  
\$80 per mo./per space  
\* Excellent for Creative Office



CONTACT: Tom Walsmith  
Direct: (310) 204-4040  
tomwalsmith@gmail.com

**CommercialPropertyGroup**  
10020 National Blvd., Ste. B  
Los Angeles, CA 90034