

4900 St. Joe Boulevard – Suite 200

Atlanta, GA

Key Facts

Property type	Industrial space
Building size	144,960 SF
Space available	40,335 SF



Contact Us

Learn more about this property or schedule a tour by reaching out to our local investment and leasing officer.

William Townsend

+1 (787) 428-5088

william.townsend@eqtpartners.com

4900 St. Joe Boulevard - Suite 200

Atlanta, GA

BUILDING SPECIFICATIONS

Available: February 2026

Total Building Size: 144,960 SF

Building Space Available: 40,335 SF

Warehouse Space: 37,426 SF

Office Space: 2,909 SF

Building Depth: 180'

Deck Height: 21' - 26'

Column Spacing: 40' x 50'

Configuration: Rear Load

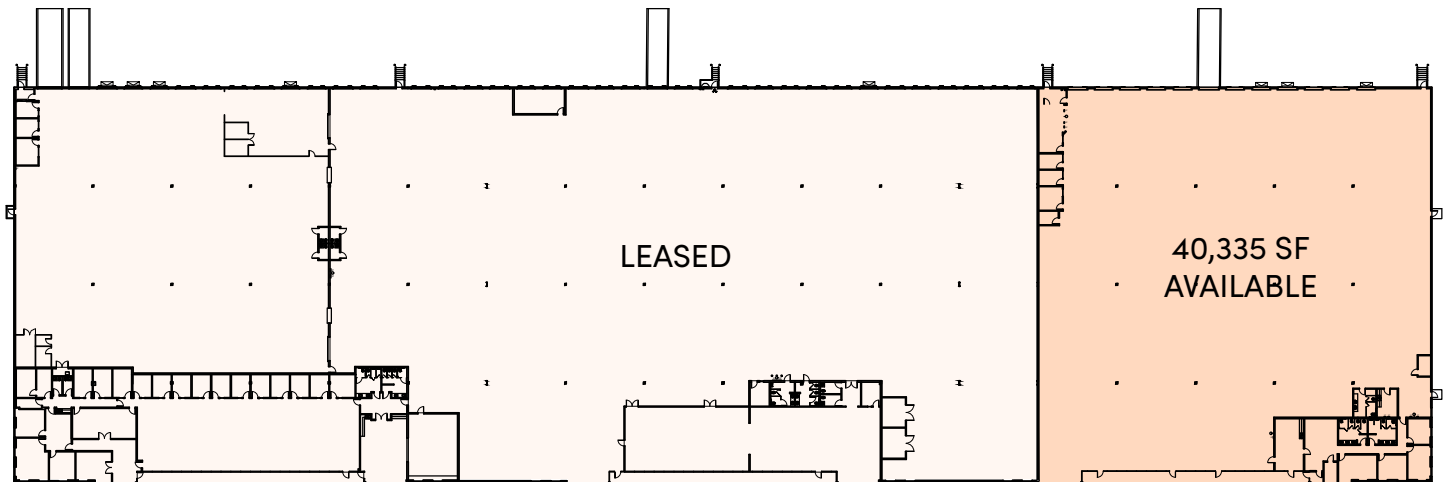
Secured Car Parking

Truck Court Depth: 115' Shared

Dock Door: 11

Drive-In Doors: 1

Fire Protection: Wet Sprinkler System



Contact Us

Learn more about this property or schedule a tour by reaching out to our local investment and leasing officer.

William Townsend

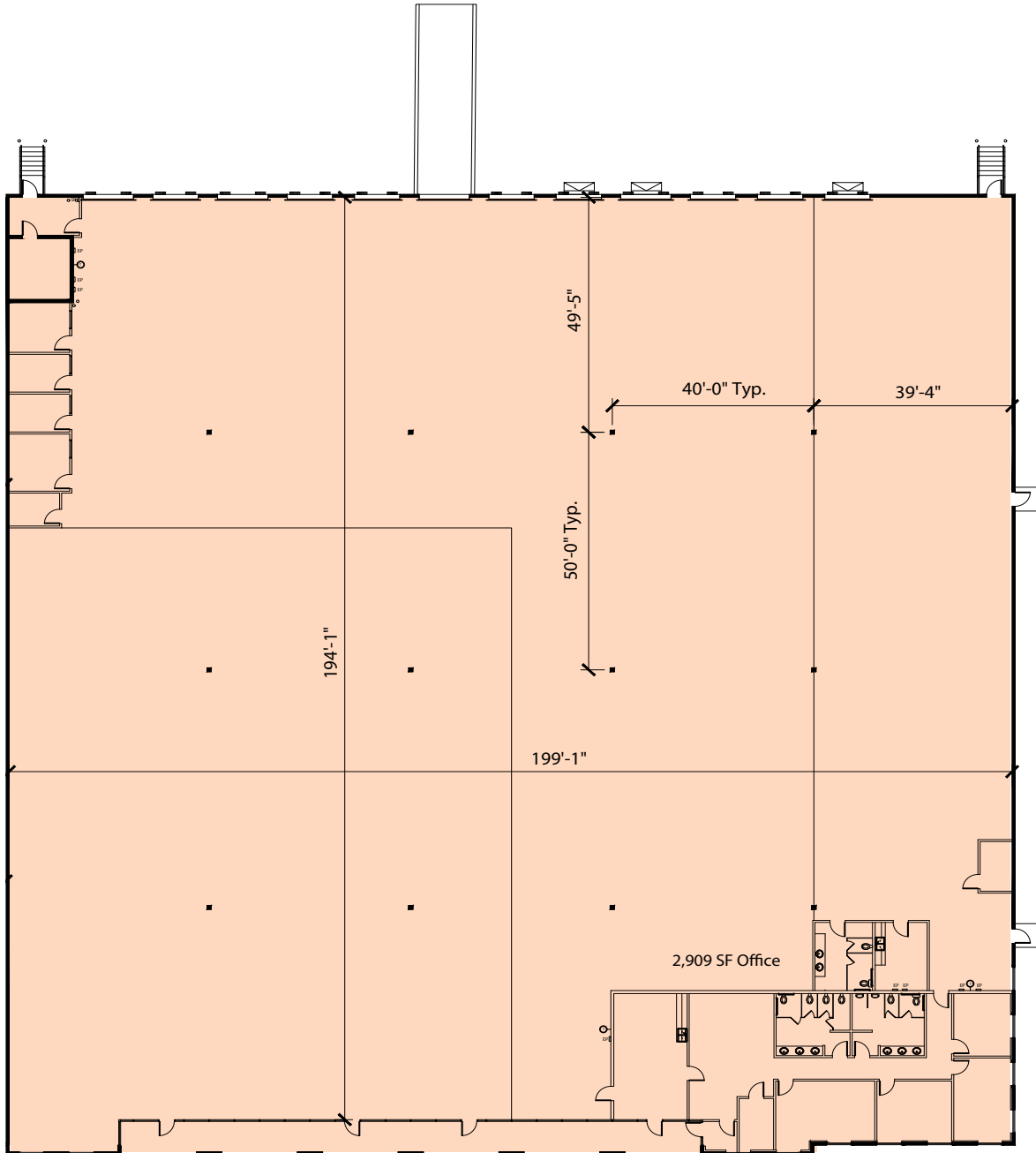
+1 (787) 428-5088

william.townsend@eqtpartners.com

4900 St. Joe Boulevard - Suite 200

Atlanta, GA

FLOOR PLAN



Contact Us

Learn more about this property or schedule a tour by reaching out to our local investment and leasing officer.

William Townsend

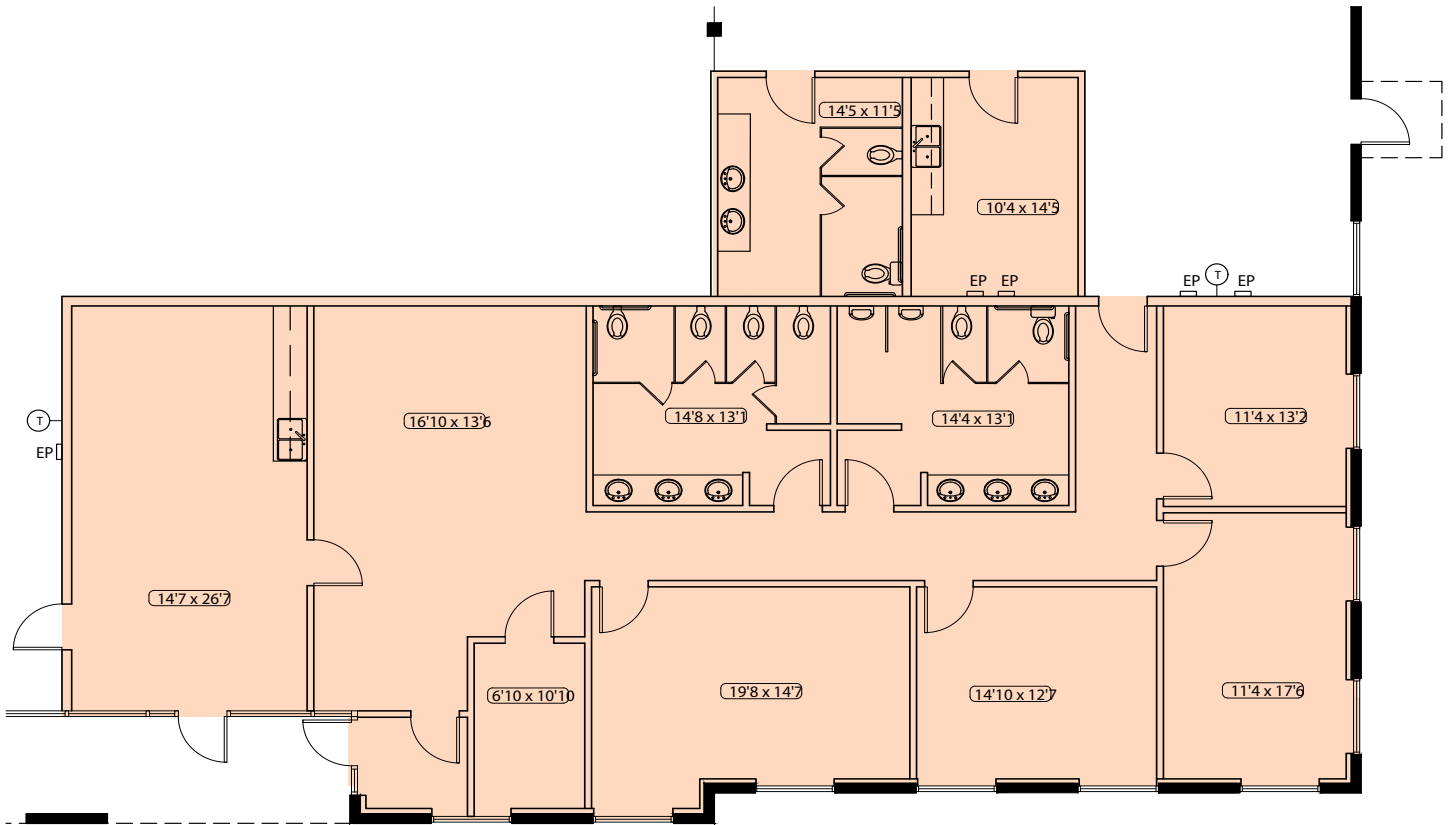
+1 (787) 428-5088

william.townsend@eqtpartners.com

4900 St. Joe Boulevard - Suite 200

Atlanta, GA

OFFICE PLAN



Contact Us

Learn more about this property or schedule a tour by reaching out to our local investment and leasing officer.

William Townsend

+1 (787) 428-5088

william.townsend@eqtpartners.com

4900 St. Joe Boulevard - Suite 200

Atlanta, GA



Contact Us

Learn more about this property or schedule a tour by reaching out to our local investment and leasing officer.

William Townsend

+1 (787) 428-5088

william.townsend@eqtpartners.com