



PACIFIC
PROPERTY
GROUP INC

For Lease and Sale | Fee Simple

Thomas Square Centre

846 S Hotel St., Honolulu, HI 96813

Welcome to 846 S Hotel Street, offering seven (7) fee simple business condominium units, ideal for small businesses seeking flexible office or storage space. These well-appointed units range in size from 1,374 sf to 2,511 sf and are currently configured as three separate office spaces. Conveniently located with easy access to eastbound and westbound city bus routes, this property offers the perfect opportunity for businesses looking to establish themselves in a prime Honolulu location. **Note: There are no customer/visitor parking stalls on site.**

Thomas Square Centre

846 S Hotel St., Honolulu, HI 96813

Multiple Units Available

Unit Number	Total SF
Unit 301, 302, & 303	2,151 SF
Unit 304 & 305	1,364 SF
Unit 306 & 307	2,151 SF

Property Highlights

Property Type:	Office
Property Subtype:	Medical
Building Class:	C
Year Built:	1935
No. of Stories:	3
Rentable Building Area:	30,000 SF
Lot Size:	0.37 AC
Parking Ratio:	0.33/1,000 SF
APN / Parcel ID:	1-2-1-042-020-0000

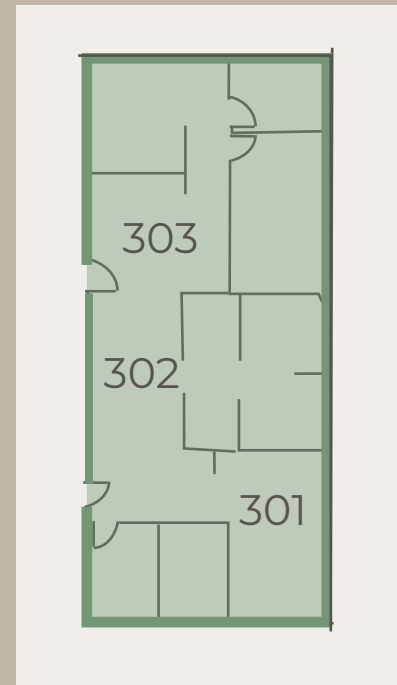
Unit Availability

The seven units are currently combined into three office spaces. Suites 301,302 & 303 (2,151 sf) are currently combined as well as Suites 304 & 305(1,364 sf) and Suites 306 & 307 (2,151 sf). We cannot sell the units individually. All units must be purchased in their current grouping.

There are no parking stalls conveyed with any of the units. Please note: there are also no visitor parking\customer parking on site.

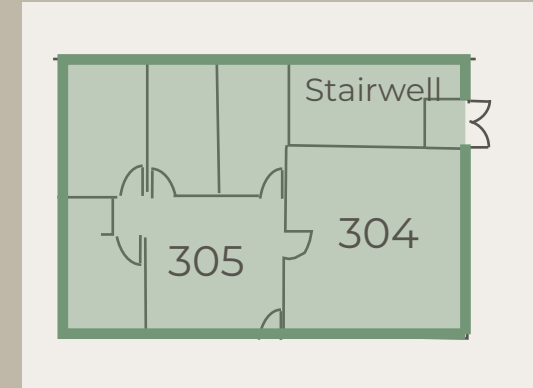
Unit Number	SF	Monthly Maintenance Fees	Price (Fee Simple)	Base Rent \$/SF/Mo
Total	2,151	\$1,434.83	\$440,104.63 (\$205/sf)	\$1.75

301-303 Occupied until October 2026

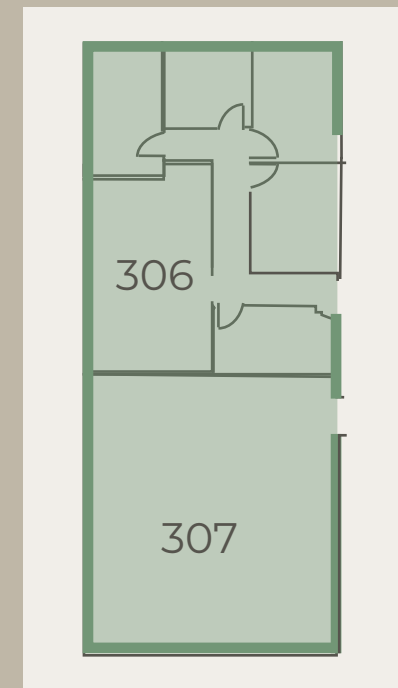


Unit Availability

Unit Number	SF	Maintenance Fees	Price	Base Rent \$/SF/Mo
Total	1,364	\$923.52	\$219,577.77	\$1.75
304-305 Month to Month			(\$160.96)	



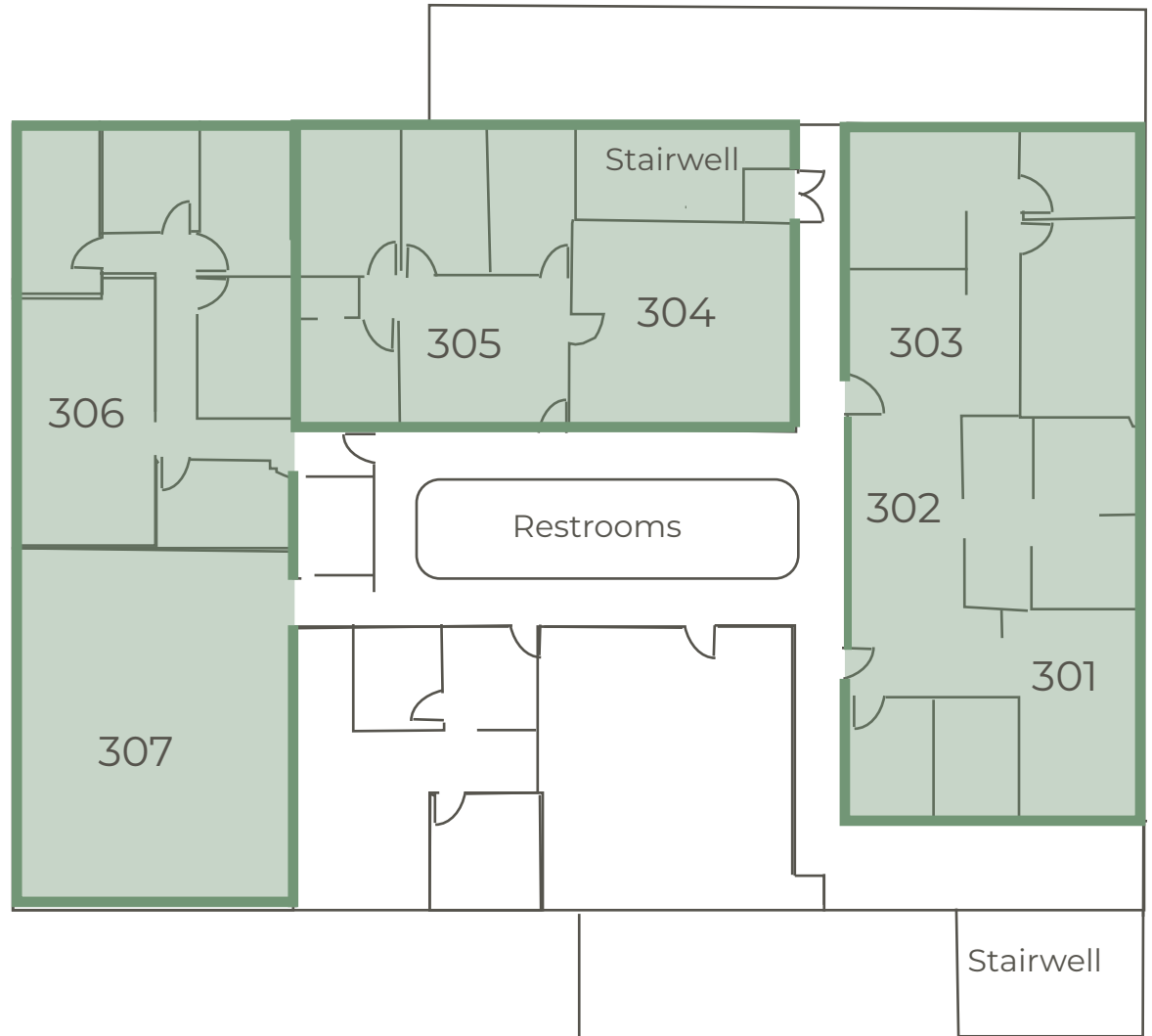
Unit Number	SF	Maintenance Fees	Price	Base Rent \$/SF/Mo
Unit 306	1,394	\$937.67	\$274,735.37	\$1.75
Occupied until June 2026			(\$197.05/sf)	
Unit 307	1,117	\$754.71	\$224,402.56	\$1.75
Available			(\$200.89/sf)	



Thomas Square Centre

For Lease and Sale Fee Simple

Property Floorplan





Strategic location, one block off Ward Avenue and Beretania Street. Conveniently located near eastbound and westbound city bus routes.

- Nearby Restaurants**
- Juupuu (Ramen).....0.08 Mi
 - Bo's Kitchen (Cantonese).....0.2 Mi
 - Southern Love (Southern).....0.5 Mi
 - Scratch Kitchen (Brunch).....0.7 Mi
 - Whole Food Market.....0.9 Mi
 - SALT At Our Kaka'ako.....1.2 Mi



CONTACT US

Keane Omaye-Backman
Lic. RS-76415
keane@pacificpropertygrouphawaii.com
(808) 292-6861

Wyatt Santilena
Lic. RS-87287
wyatt@pacificpropertygrouphawaii.com
(808) 421-8556

Miles Kamimura
Lic. RB-15589
miles@pacificpropertygrouphawaii.com
(808) 592-0200