

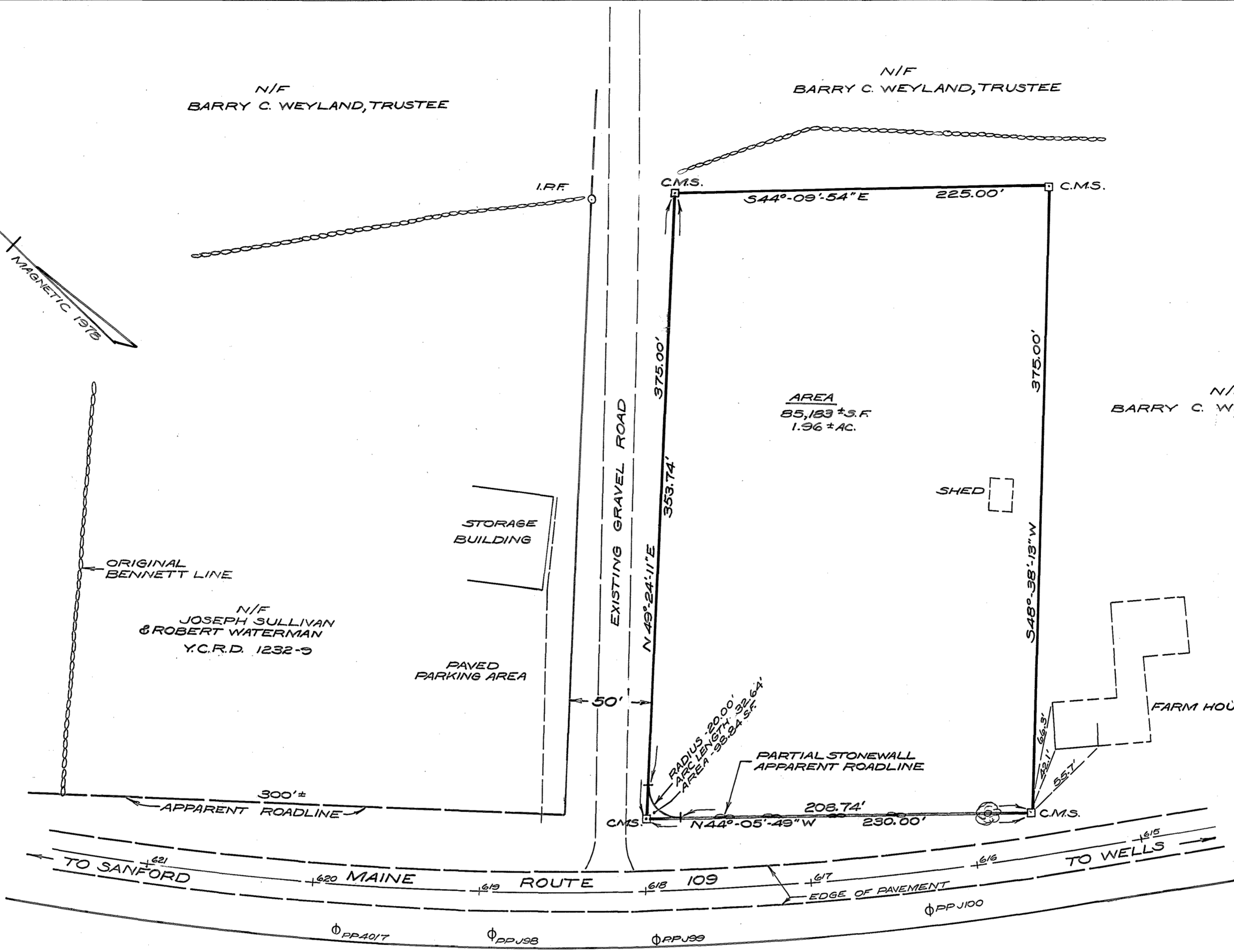
N/F
BARRY C. WEYLAND, TRUSTEE

N/F
BARRY C. WEYLAND, TRUSTEE

N/F
BARRY C. WEYLAND, TRUSTEE

N/F
JOSEPH SULLIVAN
& ROBERT WATERMAN
Y.C.R.D. 1232-3

AREA
85,183 ± S.F.
1.96 ± AC.



YORK, ss. REGISTRY OF DEEDS

Received DEC 19 1978

at 3 59 P M, and

Filed in Plan Book 97 Page 2

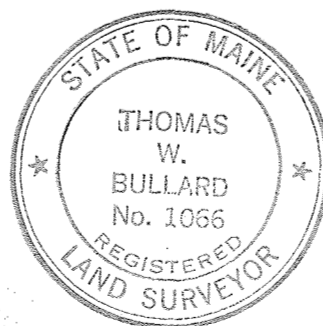
THOMAS W. BULLARD
REGISTERED LAND SURVEYOR

PLAN SHOWING PROPOSED CONVEYANCE BY
BARRY C. WEYLAND, TRUSTEE
LOCATED IN
SANFORD, MAINE

SURVEYED & DRAWN: T.W. BULLARD
NOVEMBER, 1978 SCALE: 1 IN. = 50 FT.

NOTE: HIGHWAY CENTERLINE & SIDELINE
INFORMATION TAKEN FROM MAINE
STATE HIGHWAY COMMISSION PLAN
RECORDED AT Y.C.R.D., PB. 19 PG. 6.

LEGEND: ○ IRON PIPE FOUND
□ CONCRETE MONUMENT SET
⊕ POWER POLE
--- STONEWALL



Thomas W. Bullard

10-0042