



SAN FRANCISCO, CA 94103

83 Shotwell St.

FOR LEASE

3,537 SF AVAILABLE

Creative Mission District Flex
Building with Skylights and
Drive-In Access

CHARLIE CUTLER

Partner
Email: charlie@calco-sf.com
Cell: 415.850.4935
DRE #2026787

CHARLES WILLIAMS

Associate
Email: charles@calco-sf.com
Cell: 916.757.3154
DRE #02244143

LIV MASON

Associate
Email: liv@calco-sf.com
Cell: 650.787.2364
DRE #02245475



We're Here to Help – Reach Out Today!

425 2nd St. Suite 450, San Francisco, CA 94107 | info@calcosf.com | (415) 970-0000 | calcosf.com

PROPERTY SUMMARY

| 83 Shotwell St.

AVAILABLE SPACE

3,537 SF

RATE

CONTACT BROKERS

AVAILABLE

IMMEDIATELY

PROPERTY HIGHLIGHTS

- Heavy Power: 3 Phase, 220 AMPs
- One (1) Drive-In Roll-up Door
- Two (2) Restrooms
- Commercial Grade Sink
- Polished Concrete Floors
- High Ceilings w/ Large Skylights
- Kitchenette
- HVAC

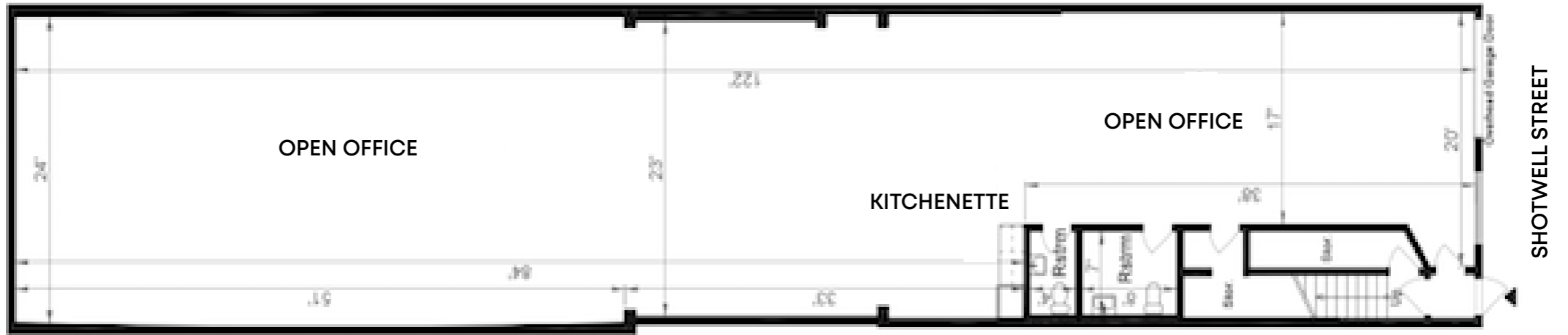


GALLERY
| 83 Shotwell St.



FLOORPLAN

| 83 Shotwell St.



LOCATION OVERVIEW

| 83 Shotwell St.



Located in the vibrant Mission District, one of San Francisco's most dynamic neighborhoods, surrounded by acclaimed restaurants, creative studios, tech offices, and cultural landmarks, with excellent access to transit and major city corridors.



04 MIN to Mission Street dining & retail

06 MIN to 16th St Mission BART

10 MIN to In Chan Kaaajal Park



06 MIN to South of Market (SOMA)

10 MIN to Union Square

12 MIN to Embarcadero Waterfront



10 MIN to US-101 Access

12 MIN to I-280 Access



NEARBY AMENITIES

| 83 Shotwell St.

- 1 Gus's Market
- 2 Tartine
- 3 Californios
- 4 Dandelion Chocolate
- 5 Lazy Bear
- 6 Base Camp
- 7 Flour and Water
- 8 Penny Roma
- 9 The Morris
- 10 Hedge Coffee
- 11 Farmhouse Kitchen
- 12 True Laurel
- 13 ABV
- 14 16th St bart
- 15 Crossfit Alinea



Tartine



Dandelion Chocolate



Gus's Market



CHARLIE CUTLER

Partner
Email: charlie@calco-sf.com
Cell: 415.850.4935
DRE #2026787

CHARLES WILLIAMS

Associate
Email: charles@calco-sf.com
Cell: 916.757.3154
DRE #02244143

**PIONEERING REAL ESTATE
SOLUTIONS WITH
PROVEN EXPERTISE**

LIV MASON

Associate
Email: liv@calco-sf.com
Cell: 650.787.2364
DRE #02245475

Calco Commercial, founded in 2011 by Scott Mason, brings over 35 years of experience and 2,500+ transactions, totaling over \$2.2 billion in sales and leases. Specializing in leasing and sales of commercial real estate in the San Francisco Bay Area and nationwide, we consistently rank as a top-producing firm. With deep knowledge of the Bay Area market, our team offers clients over three decades of expertise and exceptional customer service, providing the tools and guidance to navigate the ever-changing commercial real estate landscape.