

WEST VALLEY BUSINESS PARK - BLDG L



19226 66TH AVENUE S | KENT | WASHINGTON | 98032

FOR MORE INFORMATION:

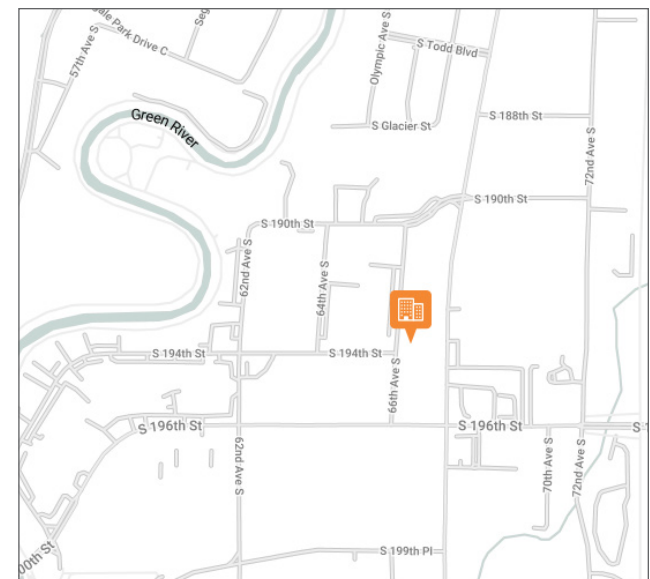
SEAN DURKIN, SIOR, MSRE, CCIM
425.830.2647
sdurkin@lee-associates.com

JOHN BRUSSA
425.891.1424
jbrussa@lee-associates.com

TAYLOR HAZARD
206.487.7027
thazard@bkmgmt.com

PROPERTY FEATURES

- Professional image environment
- Extensive landscape renovations
- Office suites from 512 SF - 1,200 SF
- Flex/Industrial suites from 1,000 SF - 4,000 SF
- Excellent visibility off of Hwy-181
- Quick access to major area highways
- Flexible floor plan options available
- Ability to expand during initial lease term

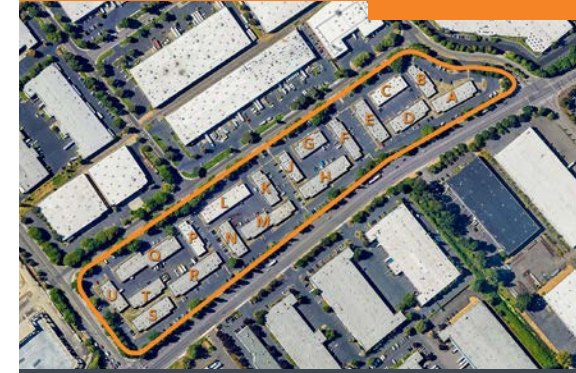
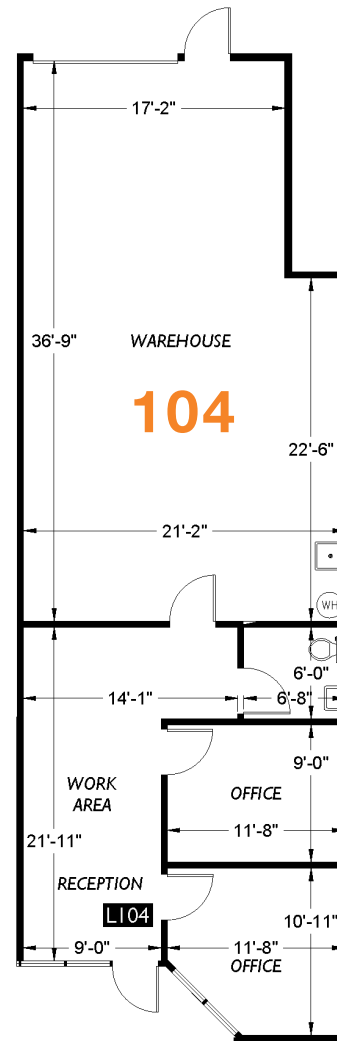
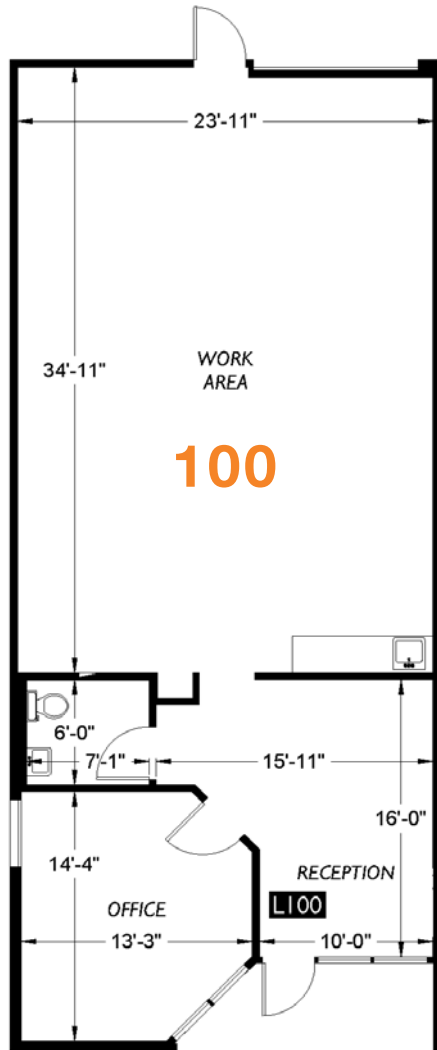


The information contained herein is believed to be accurate but is not warranted as to its accuracy and may change or be updated without notice. Seller or landlord makes no representation as to the environmental condition of the property and recommends purchaser's or tenant's independent investigation.

WEST VALLEY BUSINESS PARK - BLDG L

SITE PLAN

VARIETY OF SPACE
CONFIGURATIONS AVAILABLE



FOR MORE INFORMATION

SEAN DURKIN, SIOR, MSRE, CCIM
425.830.2647
sdurkin@lee-associates.com

JOHN BRUSSA
425.891.1424
jbrussa@lee-associates.com

TAYLOR HAZARD
206.487.7027
thazard@bkmmgmt.com

WEST VALLEY BUSINESS PARK
19226 66TH AVENUE S
KENT, WASHINGTON 98032



AVAILABILITIES

SUITE	TOTAL SF	OFFICE SF	AVAILABLE
100	1,411	423	April 1, 2025
104	1,350	598	Now

WEST VALLEY BUSINESS PARK - BLDG L

ON-SITE PROPERTY
MANAGEMENT

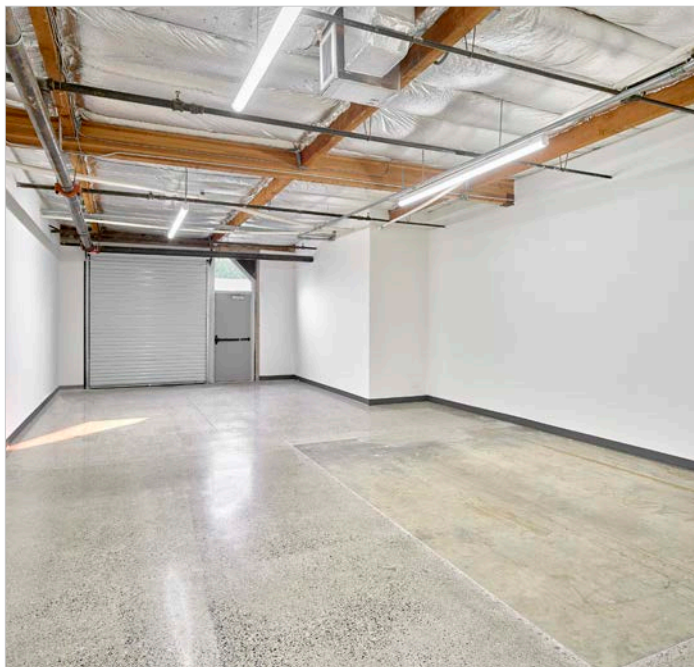


FOR MORE INFORMATION

SEAN DURKIN, SIOR, MSRE, CCIM
425.830.2647
sdurkin@lee-associates.com

JOHN BRUSSA
425.891.1424
jbrussa@lee-associates.com

TAYLOR HAZARD
206.487.7027
thazard@bkmgmt.com



WEST VALLEY BUSINESS PARK
19226 66TH AVENUE S
KENT, WASHINGTON 98032

LEE & ASSOCIATES
COMMERCIAL REAL ESTATE SERVICES

WEST VALLEY BUSINESS PARK - BLDG L

AMENITIES & IMPROVEMENTS



DISCOVER AMENITIES

BE IN THE MIDST OF IT ALL.



NEARBY AMENITIES

Costco Wholesale
Nordstrom
Target
The Home Depot
REI
Total Wine & More

FOR MORE INFORMATION

SEAN DURKIN, SIOR, MSRE, CCIM
425.830.2647
sdurkin@lee-associates.com

JOHN BRUSSA
425.891.1424
jbrussa@lee-associates.com

TAYLOR HAZARD
206.487.7027
thazard@bkmmgmt.com

WEST VALLEY BUSINESS PARK
19226 66TH AVENUE S
KENT, WASHINGTON 98032

 **LEE &
ASSOCIATES**
COMMERCIAL REAL ESTATE SERVICES

NEARBY AMENITIES