



## 1468 Pearl Street

Suite 120, Boulder, CO

### Boutique Café / Retail Space Just Off the Bricks of Pearl

#### Chris Boston, CCIM, MBA

cboston@gibbonswhite.com

(303) 586-5930

#### Kegan McNutt

kegan@gibbonswhite.com

(303) 586-5929

www.gibbonswhite.com

Property Info & Gallery

View Map

Available Space	1,544 sq. ft.
Lease Rate / sq. ft.	Negotiable

- Café Space with Existing Infrastructure - Great Natural Light & Tall Ceilings
- Phenomenal Exposure on 15th Street with Excellent Visibility to Vehicular Traffic Entering / Exiting a Public Parking Garage Across the Street
- Great Neighboring Tenants Including: Postino, Montbell, Illegal Pete's, Avanti, Black Diamond, Liberty Puzzles & Many Others

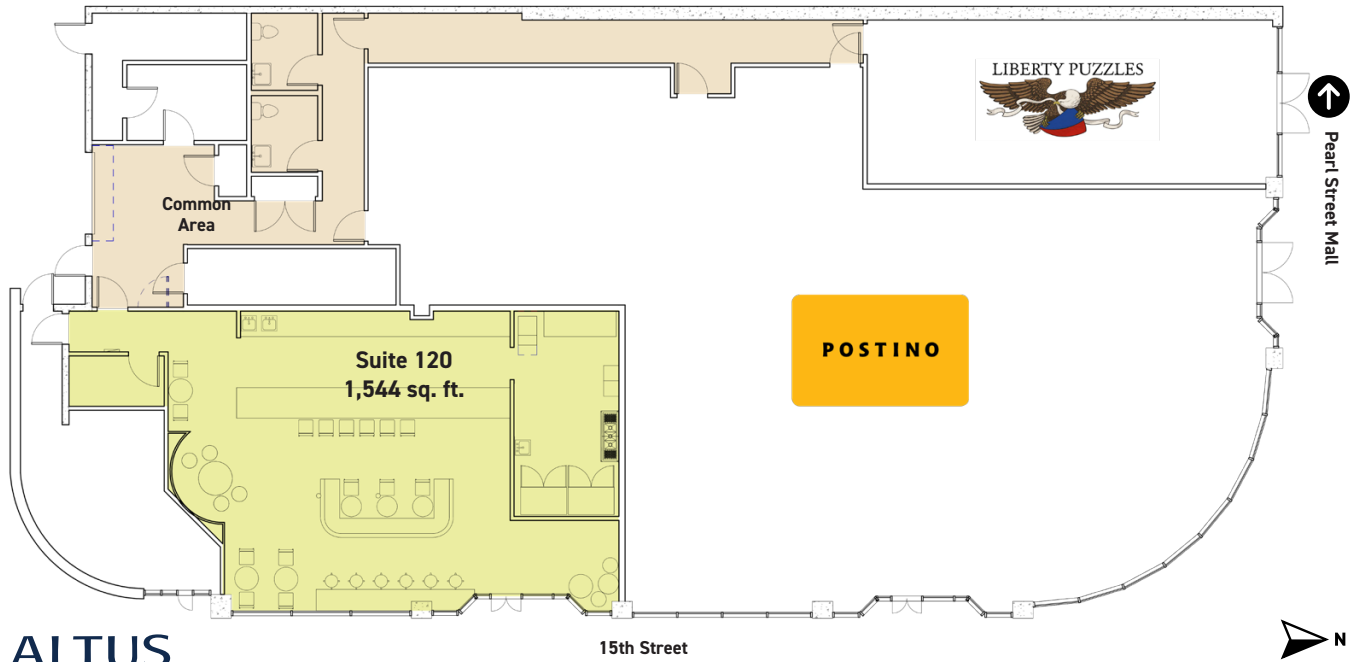


2305 Canyon Blvd, Suite 200, Boulder, CO 80302 • (303) 442-1040

The information included has been obtained from sources believed reliable. While we do not doubt the accuracy, it is unverified and no representation is being made.

© 2026 Gibbons-White, Inc.

1468 Pearl Street



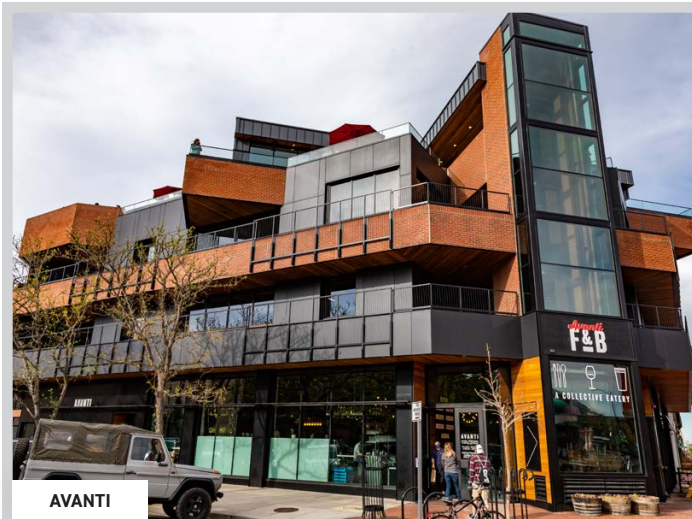
**#1 Best Place to Live and Work in America**  
- Powerlytics



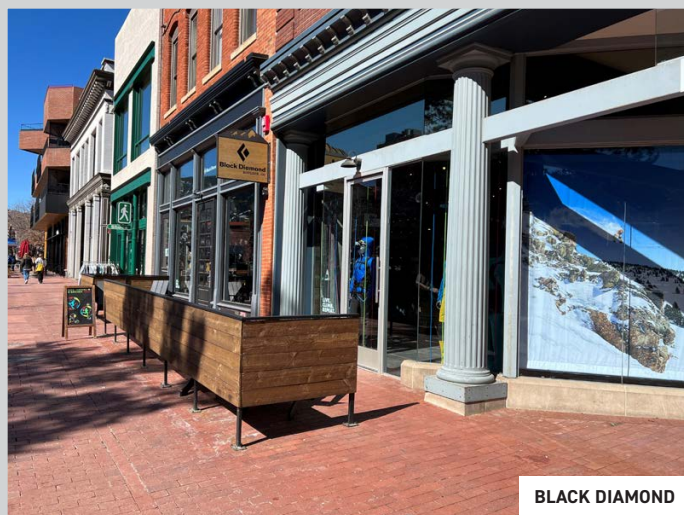
**"America's Startup Capital"**  
- INC.



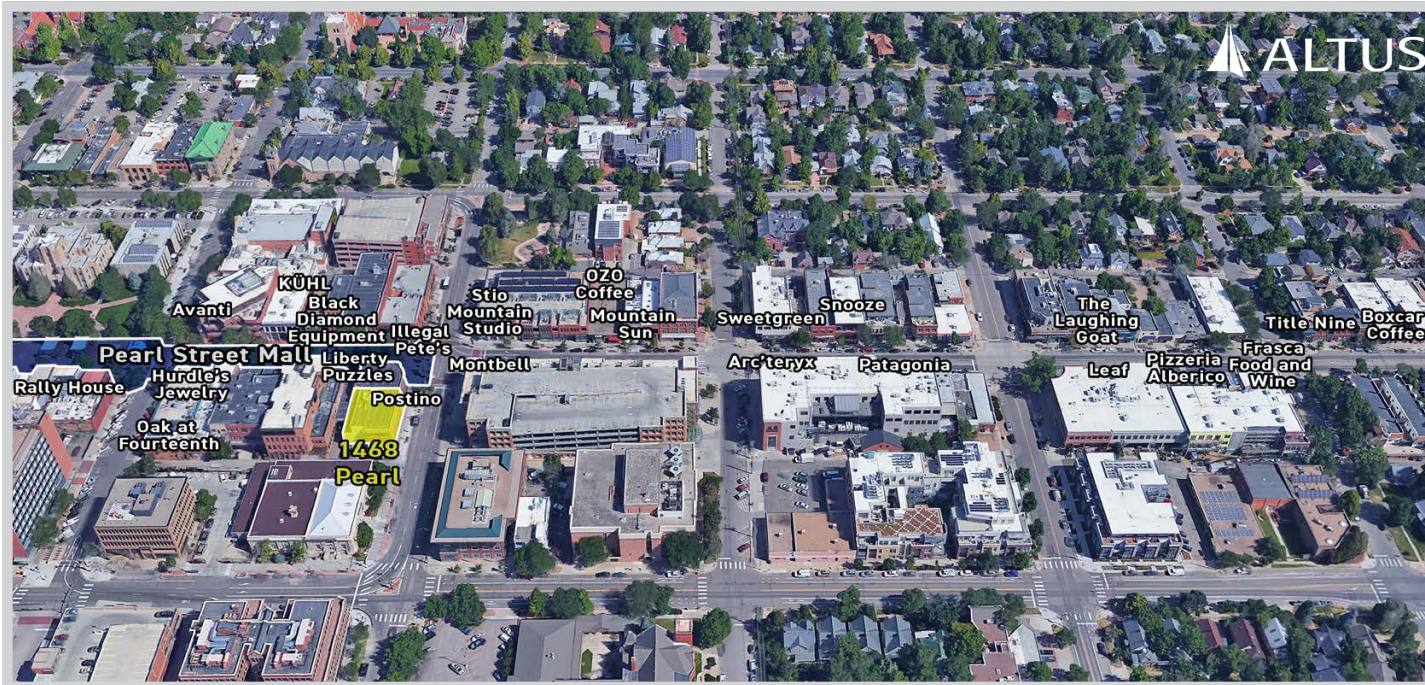
**The #1 Happiest City in America**  
- Forbes



AVANTI



BLACK DIAMOND



ALTUS



SNOOZE



POSTINO