



HIGHLIGHTS

- Suite 203 available for sublease
- Includes free parking, enclosed reception with reception window, 3 private offices, break room with sink, private restroom
- Term ends January 31, 2030
- Newly renovated three story professional medical office building

SUITE	SQ. FT.
203	1,291 SF

***Terms ends January 31, 2030**



PROPERTY DETAILS

Building Size	±31,904 SF
Year Built	1979
Parking	4.8

For more information please contact:

CHRISTOPHER LARIMORE

Founding Principal

D • 626.240.2788

E • clarimore@lee-associates.com

LICENSE ID 01314464

VINCENT MOLITOR

Founding Principal

D • 626.240.2787

E • vmolitor@lee-associates.com

LICENSE ID 01295360

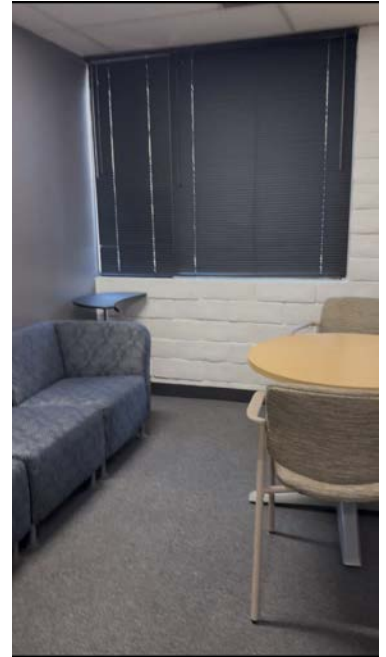
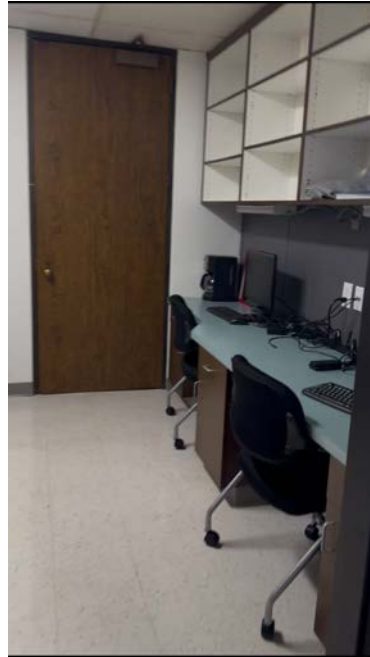
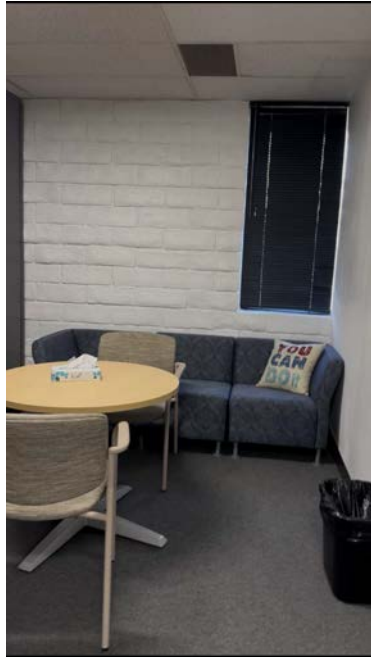
LEE & ASSOCIATES - PASADENA, INC.

1055 E. Colorado Blvd., Suite 330

Pasadena, CA 91106

Corporate ID 02059558

lee-pasadena.com



For more information please contact:

CHRISTOPHER LARIMORE

Founding Principal

D • 626.240.2788

E • clarimore@lee-associates.com

LICENSE ID 01314464

VINCENT MOLITOR

Founding Principal

D • 626.240.2787

E • vmolitor@lee-associates.com

LICENSE ID 01295360

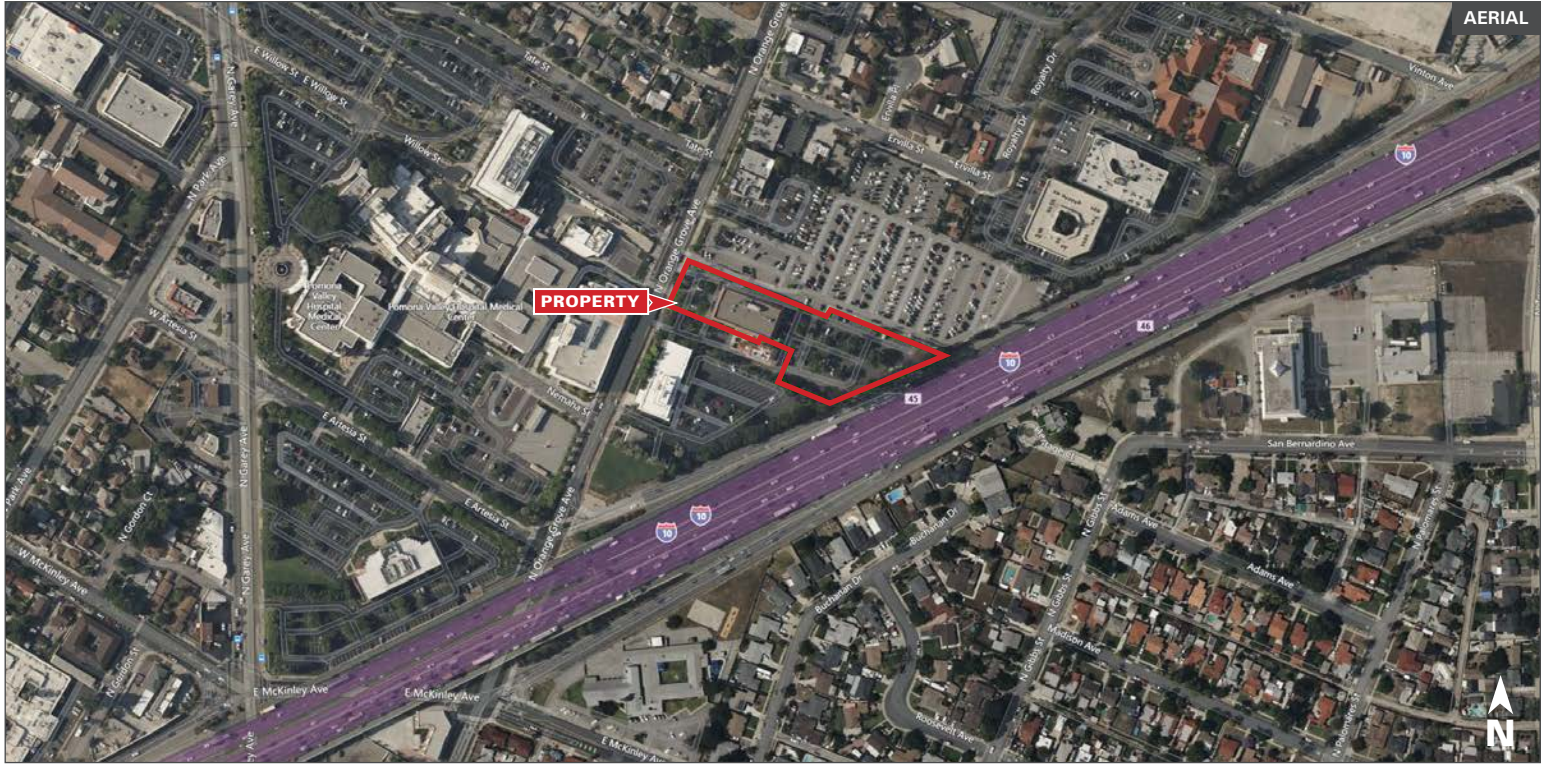
LEE & ASSOCIATES - PASADENA, INC.

1055 E. Colorado Blvd., Suite 330

Pasadena, CA 91106

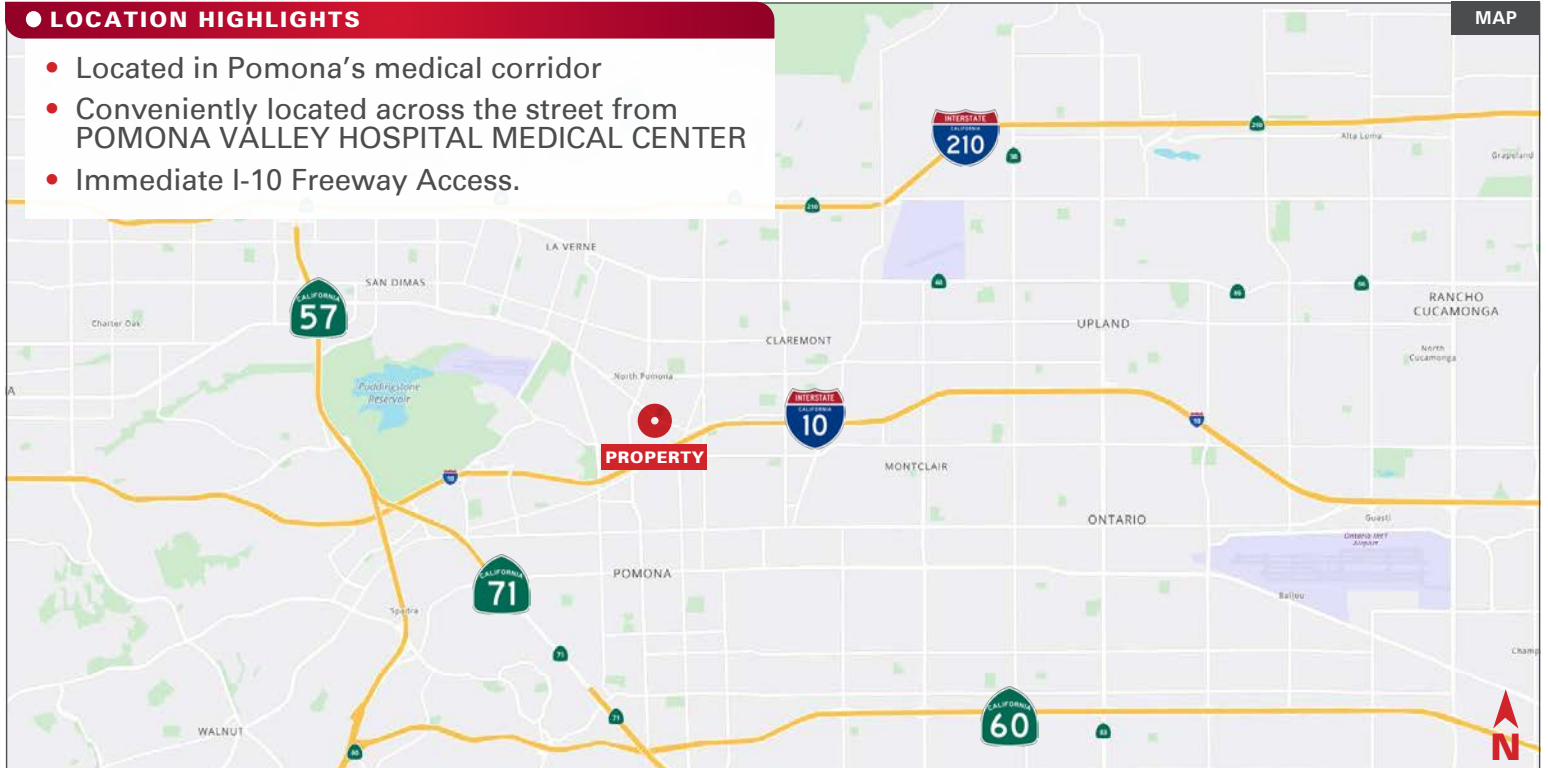
Corporate ID 02059558

lee-pasadena.com



LOCATION HIGHLIGHTS

- Located in Pomona's medical corridor
- Conveniently located across the street from POMONA VALLEY HOSPITAL MEDICAL CENTER
- Immediate I-10 Freeway Access.



For more information please contact:

CHRISTOPHER LARIMORE
 Founding Principal
 D • 626.240.2788
 E • clarimore@lee-associates.com
 LICENSE ID 01314464

VINCENT MOLITOR
 Founding Principal
 D • 626.240.2787
 E • vmolitor@lee-associates.com
 LICENSE ID 01295360

LEE & ASSOCIATES - PASADENA, INC.
 1055 E. Colorado Blvd., Suite 330
 Pasadena, CA 91106
 Corporate ID 02059558
 lee-pasadena.com