

2 ADJOINING PARCELS - 42,425 SF ON ± 3.08 ACRES
INDUSTRIAL / FLEX SUBLEASE OPPORTUNITY



2605 & 2609 S CAROLYN AVE

SIOUX FALLS, SD 57106

HUGHESMARINO

Property Overview



Exterior

2605 & 2609 S Carolyn Ave
Sioux Falls, SD 57106



Total Size

±42,425 SF

Building:

2605: 15,000 SF

2609: 27,425 SF



Lot Size

±3.08 acres



Available

December 1, 2026



Asking Rate

\$8.60/SF NNN (\$1.75/SF Opex)



Available Through

September 30, 2028



Sublease Type

Industrial / Flex



Built/Renovated

1985/2020



Flow and Paddle



Map data ©2025 Google

Key Features



Building 2609: Warehouse/shop with mezzanine storage

Building 2605: Includes showroom, private offices, conference room, and break area



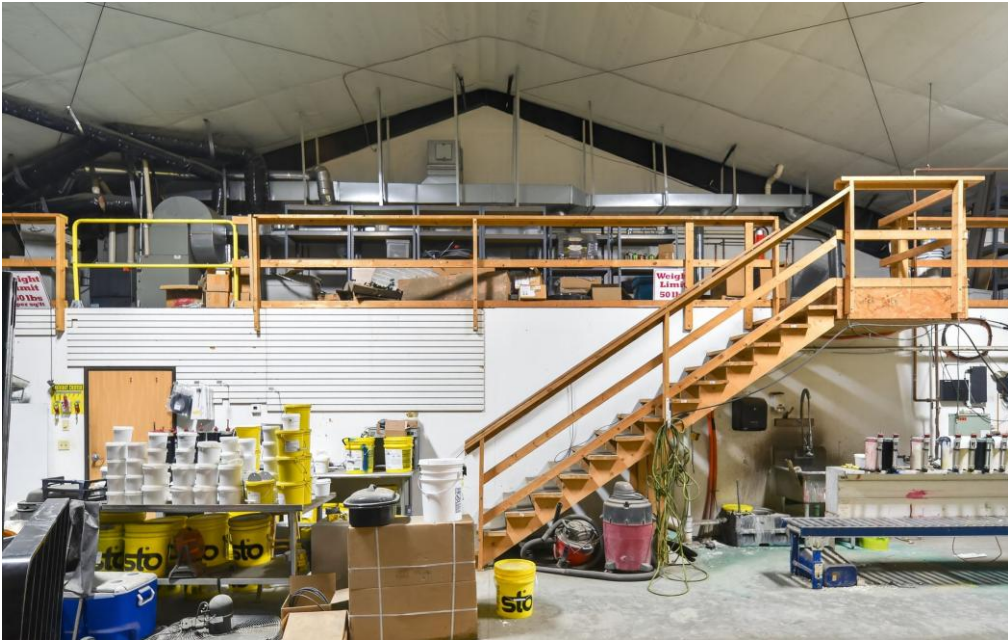
Fenced exterior yard



33 surface parking spaces







Contact



Alex Foley

Executive Vice President
License #700145

alex.foley@hughesmarino.com
469.907.3868



Ben Goldthorpe, SIOR

Senior Vice President
License #628569

ben@hughesmarino.com
940.595.6506

HUGHES MARINO DALLAS

3811 Turtle Creek Blvd
Suite 600
Dallas, TX 75219
214.272.2111