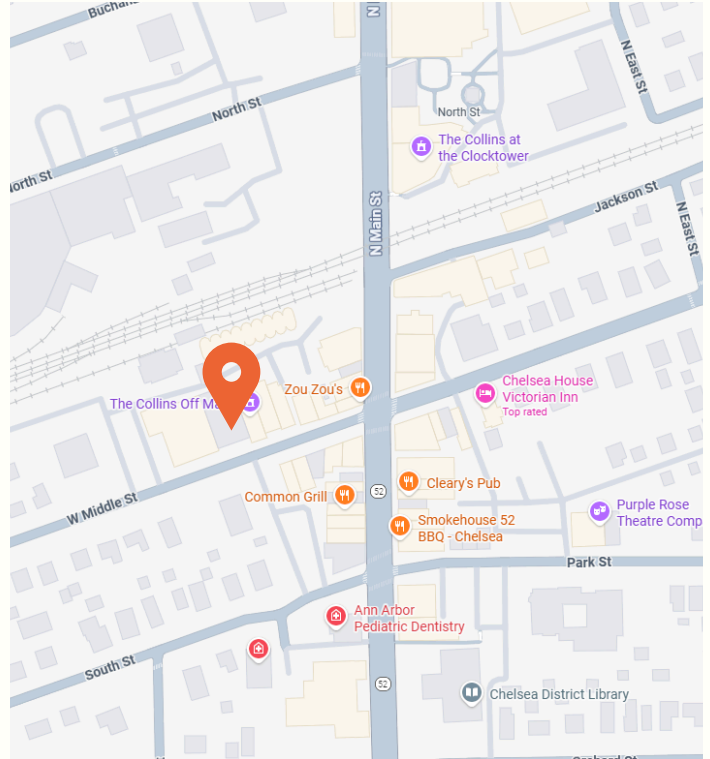


Office for Lease // Executive Summary



OFFERING SUMMARY

LEASE RATE:	\$23.12-\$23.25
LEASE TYPE:	GROSS
BUILDING SIZE:	14,400 SF
AVAILABLE SF:	506-1,097 SF
ZONING:	DT - DOWNTOWN

LOCATION OVERVIEW

Professional, well-maintained downtown Chelsea office with polished interiors and a quiet setting near dining, shops, and public parking. A strong fit for small businesses and practitioners.

FOR LEASE

SPACES	RATE	SIZE
134-H	\$23.25 (G)	1,097 SF
134-I	\$23.12 (G)	506 SF

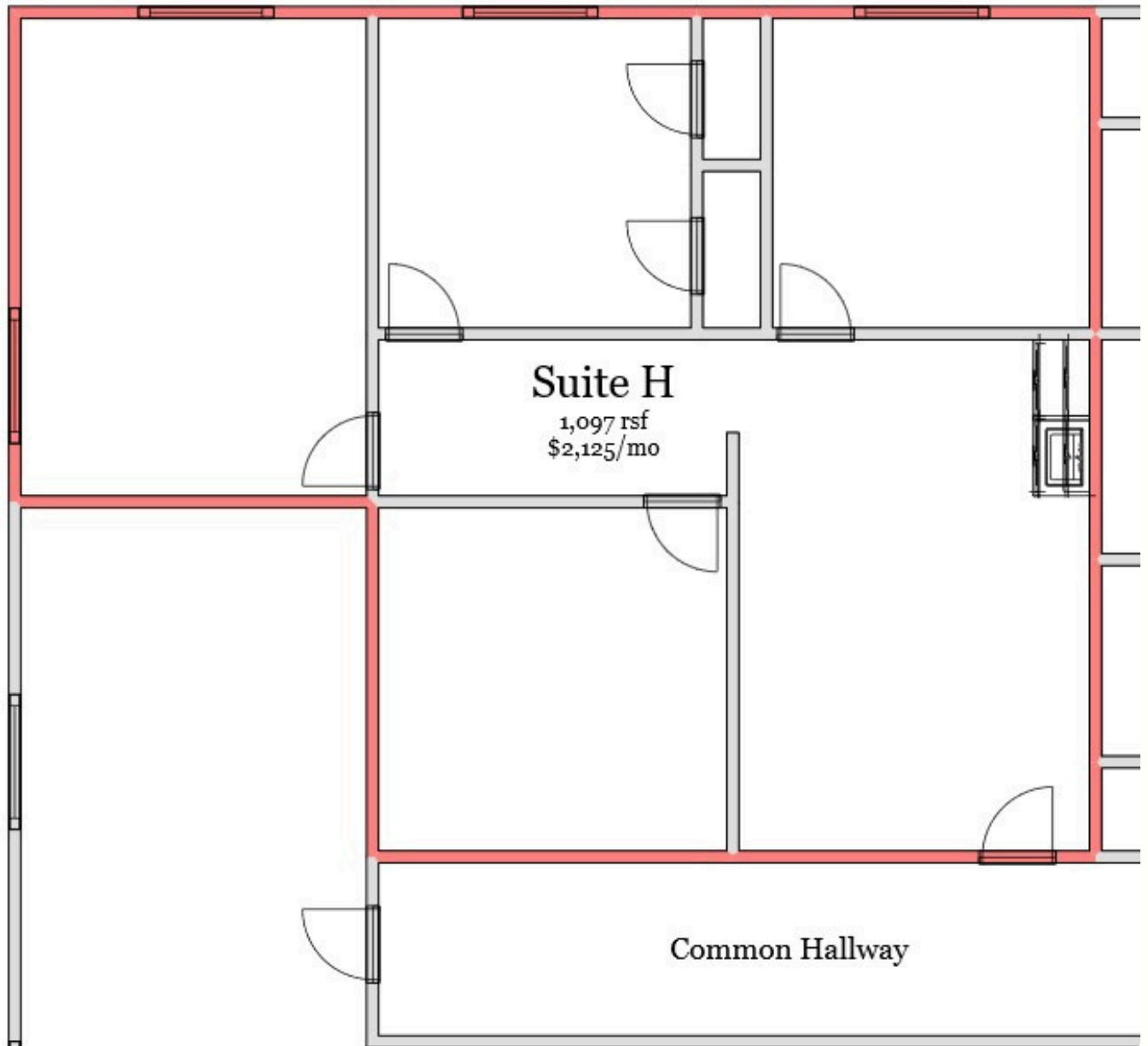


COMMERCIAL
real property, real value.

Middle Square Professional Building

134 W Middle St. Chelsea, MI 48118

Office for Lease // 134-H Floorplan





COMMERCIAL
real property, real value.

Middle Square Professional Building

134 W Middle St. Chelsea, MI 48118

Office for Lease // 134-H Photos



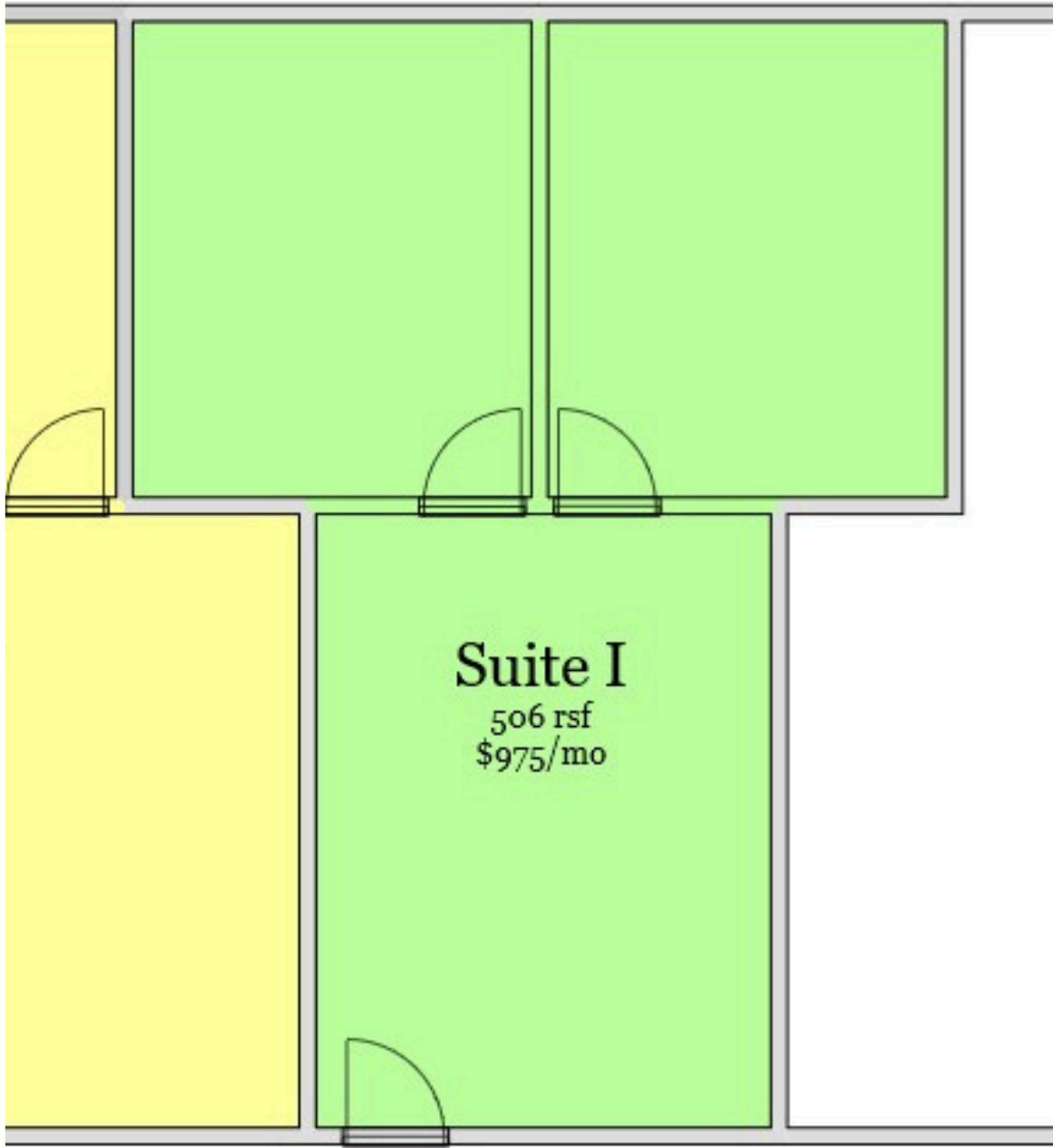


COMMERCIAL
real property, real value.

Middle Square Professional Building

134 W Middle St. Chelsea, MI 48118

Office for Lease // 134-I Floorplan



Common Hallway



COMMERCIAL
real property, real value.

Middle Square Professional Building

134 W Middle St. Chelsea, MI 48118

Office for Lease // 134-I Photos



Middle Square Professional Building

134 W Middle St. Chelsea, MI 48118

Office for Lease // Contact



TYLER BURGOON

Broker / Operations Director

tyler@jpcommercialre.com

office 734 994 8800

cell 734 730 5633



JP COMMERCIAL REAL ESTATE (JPCRE) DOES NOT MAKE ANY REPRESENTATIONS OR WARRANTIES, EXPRESS OR IMPLIED, AS TO THE ACCURACY OR COMPLETENESS OF THE INFORMATION CONTAINED HEREIN, AND NOTHING CONTAINED HEREIN IS OR SHALL BE RELIED UPON AS A PROMISE OR REPRESENTATION AS TO THE FUTURE REPRESENTATION OF THE PROPERTY. THIS MAY INCLUDE CERTAIN STATEMENTS AND ESTIMATES WITH RESPECT TO THE PROPERTY. JPCRE DISCLAIMS ANY AND ALL LIABILITY FOR REPRESENTATIONS OR WARRANTIES, EXPRESSED OR IMPLIED, CONTAINED IN OR OMITTED INFORMATION. THE INFORMATION CONTAINED HEREIN IS SUBJECT TO CHANGE WITHOUT NOTICE AND THE RECIPIENT OF THESE MATERIALS SHALL NOT LOOK TO JPCRE OR THE JPCRE ADVISOR NOR ANY OF THEIR OFFICERS, EMPLOYEES, REPRESENTATIVES, INDEPENDENT CONTRACTORS OR AFFILIATES, FOR THE ACCURACY OR COMPLETENESS THEREOF.