



Turnkey medical space on heavily trafficked corridor

Unit	Size	Rate	Availability
Suite 100	3,349 sf	\$29.95/sf/NNN	Now

Formerly Bon Secours Urgent Care, the available suite offers a turnkey solution for a multitude of healthcare practices. This location is particularly suited to fill the demand for primary care in the immediate area.

This property offers strong commercial appeal due to its prime corner location, solid visibility, and proximity to major regional attractions. There's great access for patients coming from Greer, Spartanburg, and downtown Greenville.

Get more information

Ned Reynolds, Vice President
+1 336 260 3148
ned.reynolds@avisonyoung.com

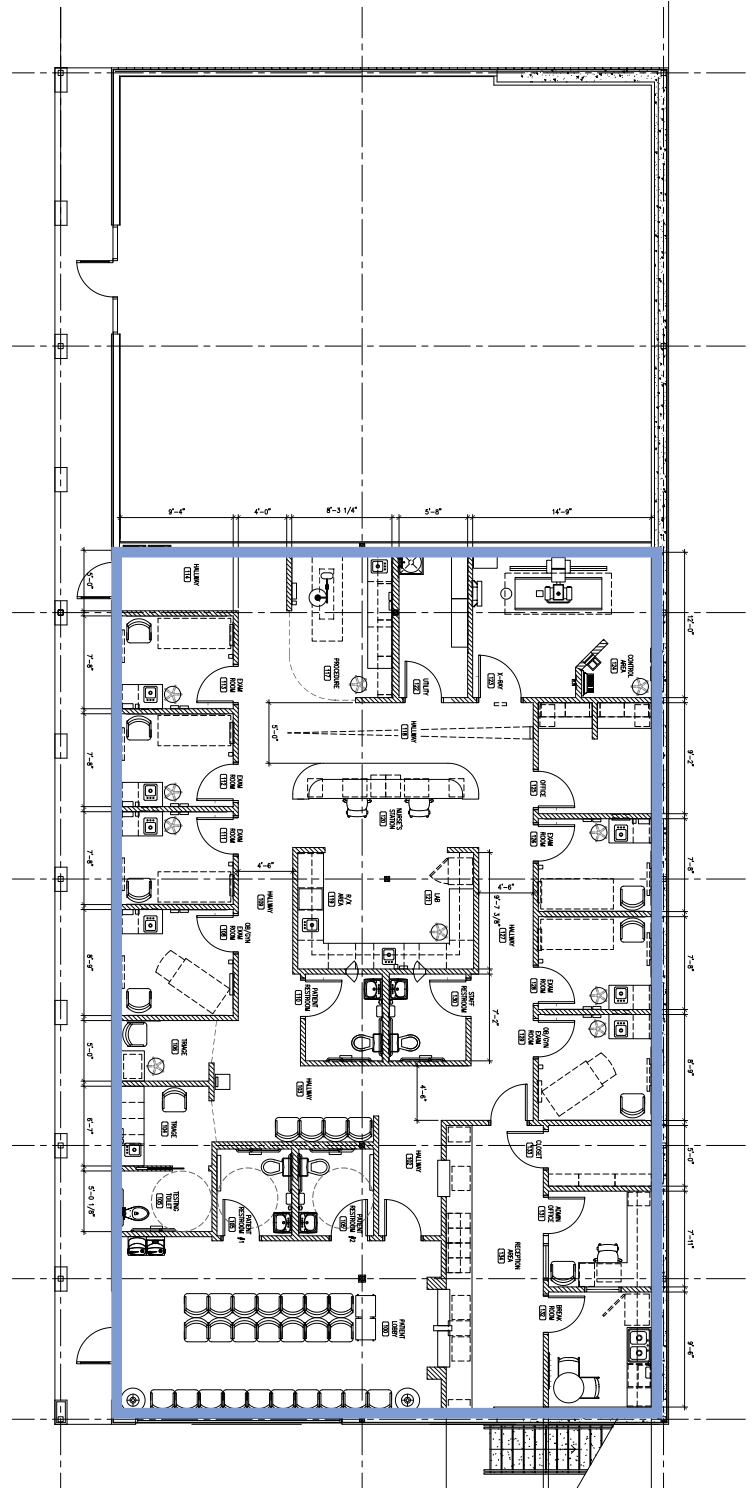
Will Hannah, Associate
+1 864 508 4525
will.hannah@avisonyoung.com

Property overview

2709 Pelham Road, Greenville

Highlights

- Healthcare-compliant layout and infrastructure is already in place and of high standard
- Excellent visibility and accessibility. Great signage opportunity.
- Proximity to major hospitals and residential communities
- Ready for immediate occupancy—minimize downtime and startup costs



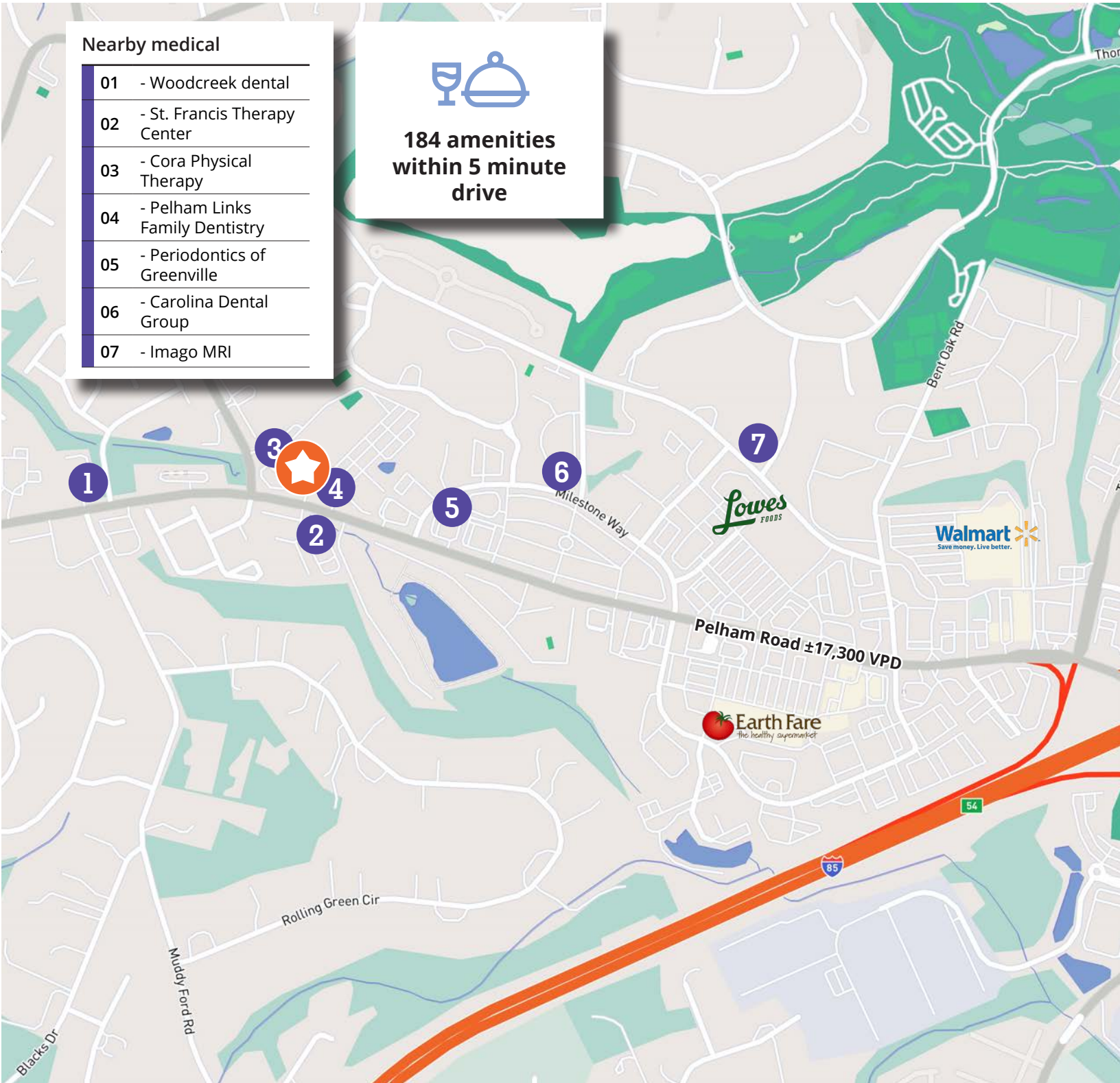
Photos

2709 Pelham Road, Greenville



Location

2709 Pelham Road, Greenville



Ned Reynolds
Vice President
+1 336 260 3148

Will Hannah
Associate
+1 864 508 4525