

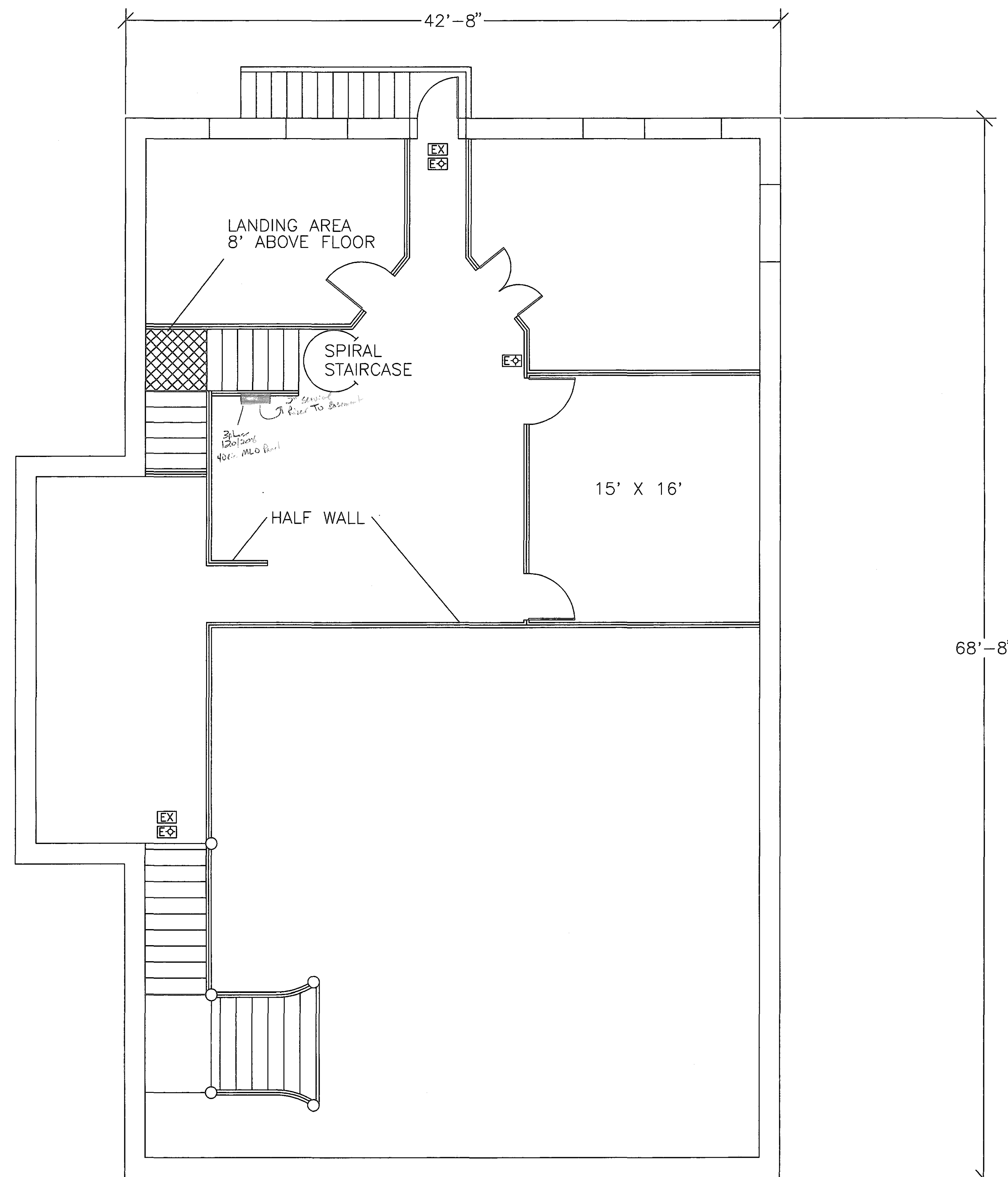
LEGEND	
EX	EXIT SIGN
E	EMERGENCY LIGHT

Notations:

1. Intended Use - Office Space
2. Occupant Load - 60
Number of Employees - 25
3. Fire & Handicaps approved by Summit County Fire Dept
File # 940937
Dated 9-15-94
4. Handicap Restrooms according to ANSI 117.1
5. Plans & renovation in accordance with City of Buford adopted codes
6. All entrance and office doors to be a minimum of 36" according to ANSI 117.1
7. Stairs approved by Summit Co Fire Dept (File # 940937)

RESTORATION PROJECT
 55 SCOTT STREET
 BUFORD, GA

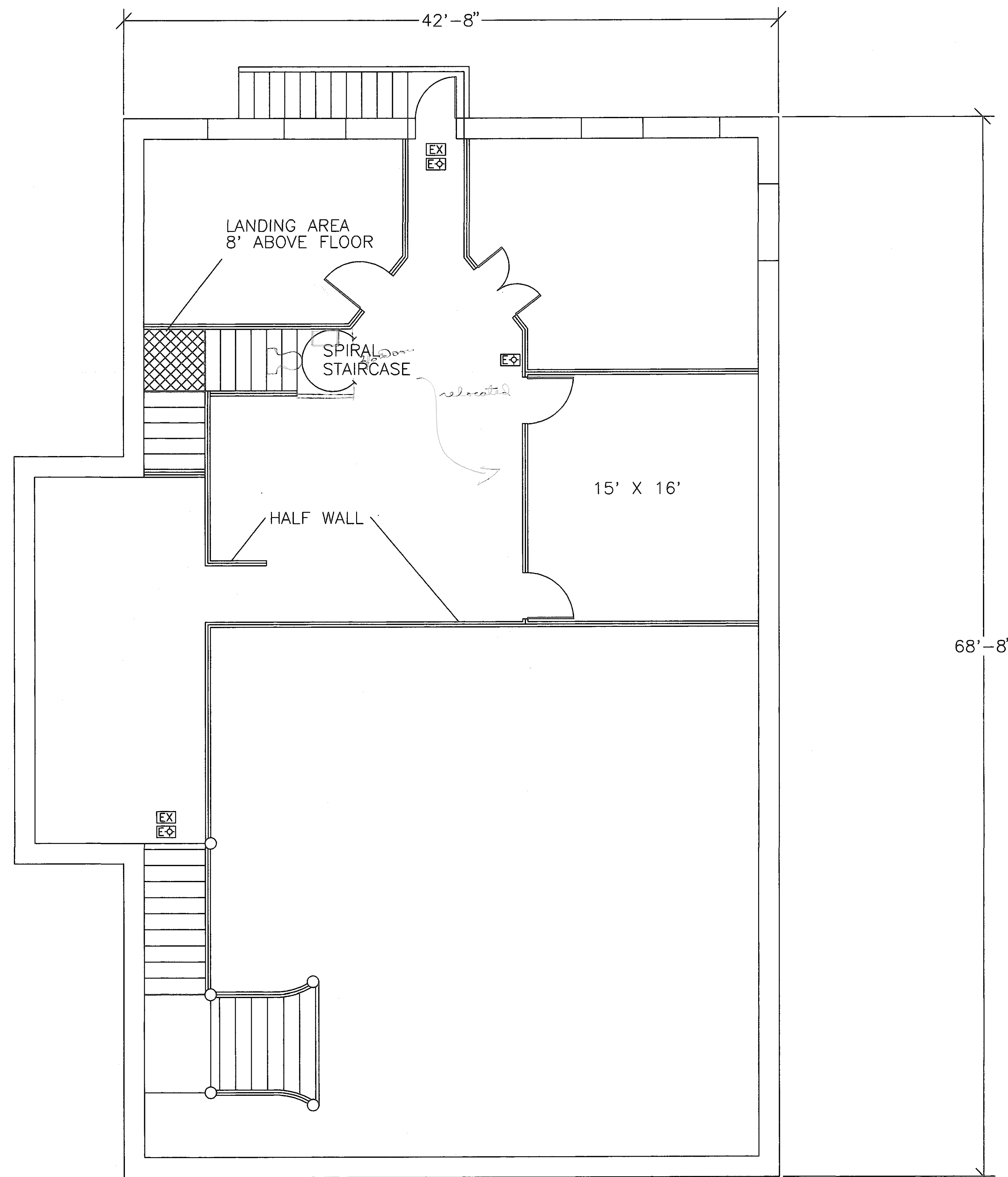
BASEMENT



LEGEND	
EX	EXIT SIGN
E	EMERGENCY LIGHT

MEZZANINE LEVEL

RESTORATION PROJECT
 55 SCOTT STREET
 BUFORD, GA



LEGEND

EX EXIT SIGN

E◊ EMERGENCY LIGHT



MEZZANINE LEVEL

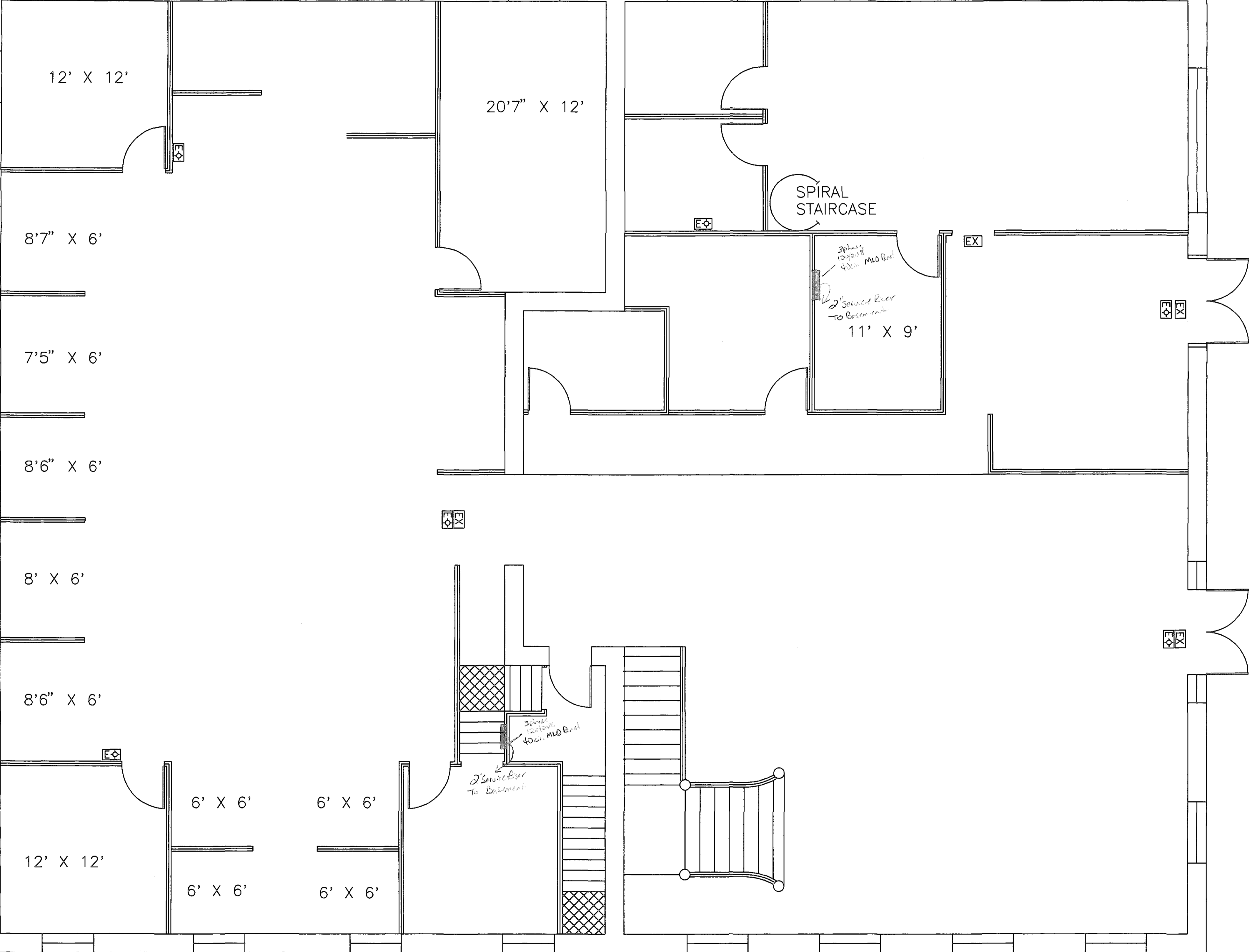
RESTORATION PROJECT
 55 SCOTT STREET
 BUFORD, GA

87'-1 1/2"

68'-8"

LEGEND

-  EXIT SIGN
-  EMERGENCY LIGHT



MAIN FLOOR

RESTORATION PROJECT
 55 SCOTT STREET
 BUFORD, GA

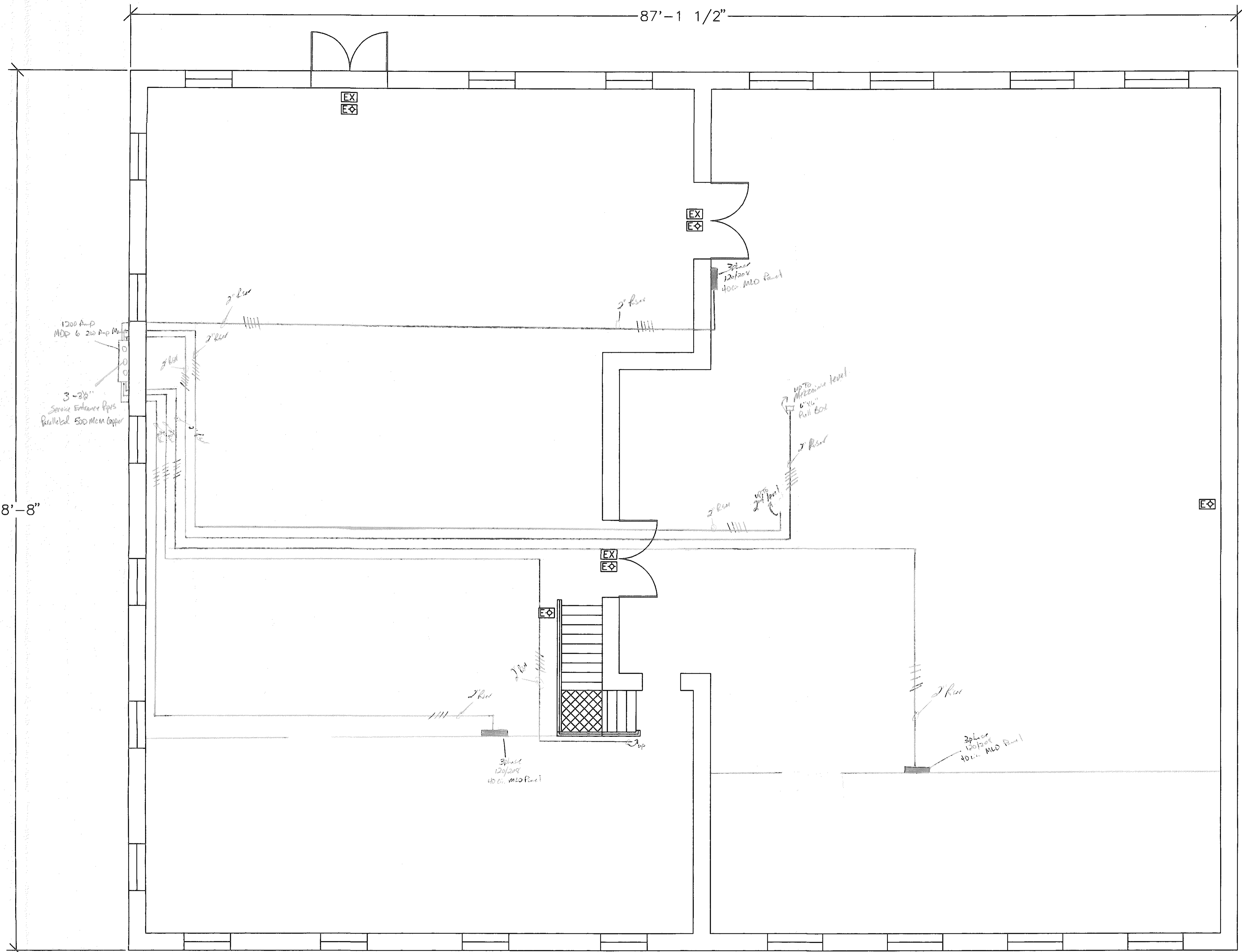
87'-1 1/2"

68'-8"

LEGEND

EX EXIT SIGN

EL EMERGENCY LIGHT



BASEMENT

RESTORATION PROJECT

55 SCOTT STREET

BUFORD, GA