

±9,216 SF Freestanding Industrial Building Available For Lease/Sale



3834 WACKER DRIVE
JURUPA VALLEY, CA 91752

FOR MORE INFORMATION,
PLEASE CONTACT:

ARMEN GOURDIKIAN
+1 909 942 4643
armen.gourdikian@cushwake.com
CA License 00944798

MILO LIPSON
+1 909 942 4648
milo.lipson@cushwake.com
CA License 01253614

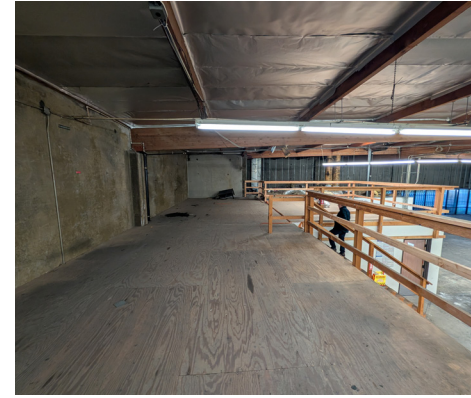




Property Highlights

- Freestanding Building in Business Park Environment
- Excellent location with easy access to 60, 15 and 10 freeways
- 2 Ground level loading doors 12'x14'
- 16' Minimum clear height
- 800 Amps, 277/480 Volt power (verify capacity)
- Newly installed roof
- Warehouse ceiling insulation
- +/-1,000 SF of Offices with bonus Mezzanine
- Power, Gas and Water distributed
- Fully Divisible Building
- Zoning of M-M (Medium Manufacturing)

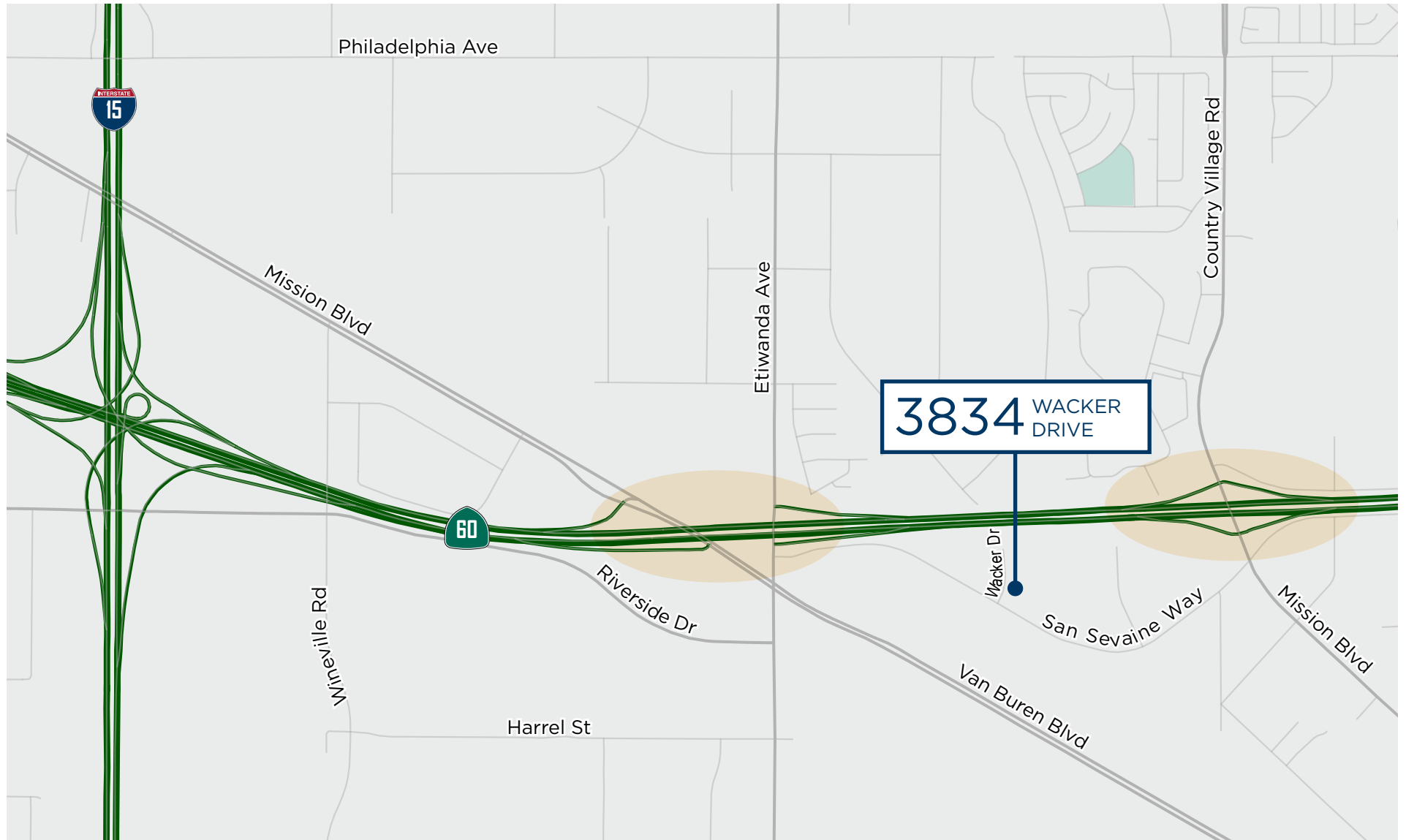
Site Plan



Exterior Photos



Location Map



Location Aerial



CONTACT

ARMEN GOURDIKIAN

Managing Director

+1 909 942 4643

armen.gourdikian@cushwake.com

CA License 00944798

MILO LIPSON

Executive Director

+1 909 942 4648

milo.lipson@cushwake.com

CA License 01253614

