

AVAILABLE FOR SALE

533 CANAL STREET #2

LESLIE
GARFIELD

533 CANAL STREET #2

KEY INFORMATION

Location	Washington Street & Greenwich Street
Square Footage	5,000 sq. ft (approximately)
Appx. Monthlies	\$2,000
Zoning	C6-2A

PRICE
\$5,000,000

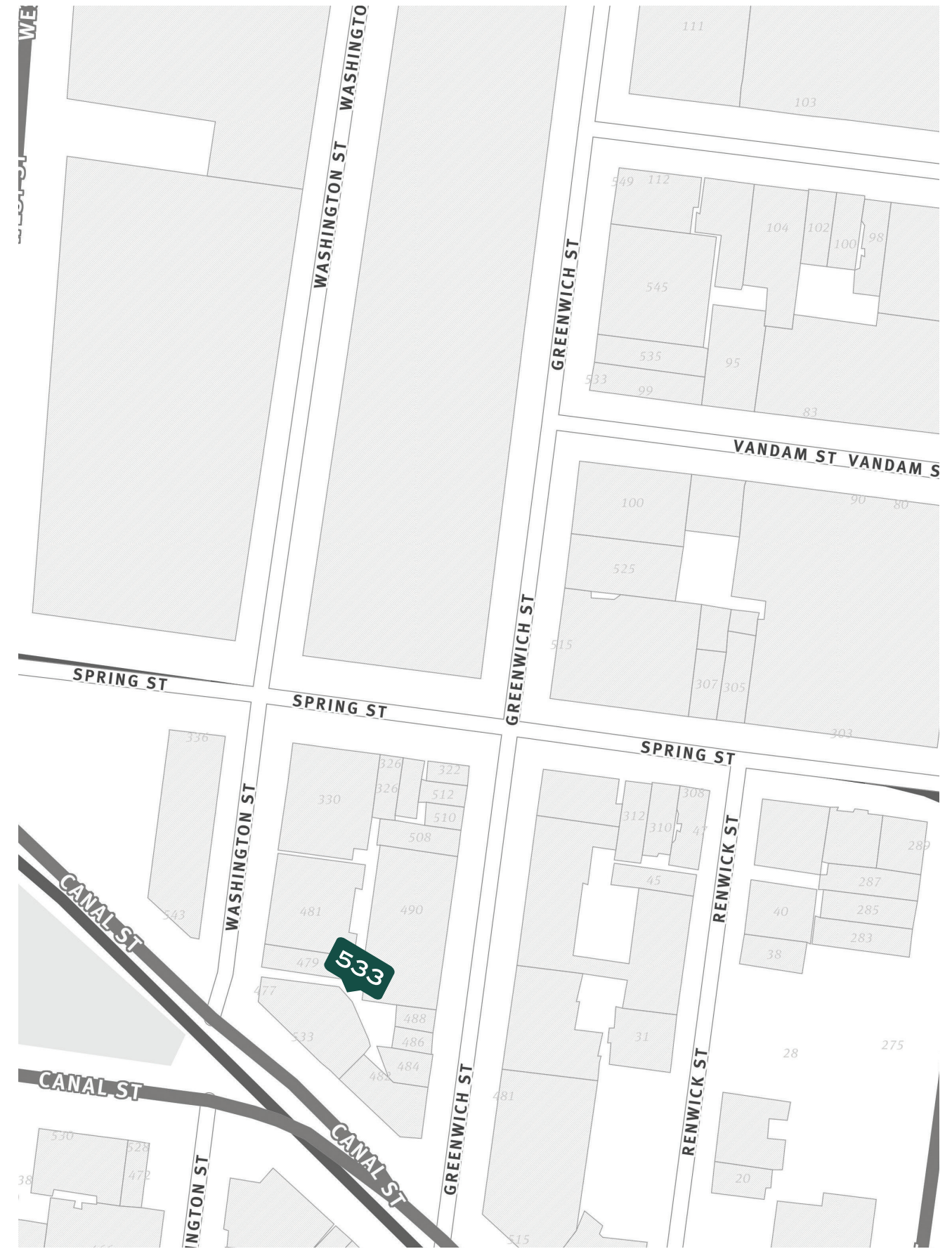
NEIGHBORHOOD
Hudson Square NYC

Located in the vibrant Hudson Square neighborhood, 533 Canal Street, Unit #2, offers an exceptional opportunity to own a full-floor commercial loft in one of Manhattan's most dynamic creative districts. Spanning approximately 5,000 square feet, this versatile space occupies the entire second floor of an eight-story, elevator-serviced co-op building originally constructed in 1911 and later converted to lofts.

The open layout features soaring 12-foot ceilings, expansive floor-to-ceiling windows, and abundant natural light throughout, with partial views of the Hudson River. The generous proportions and flexible design make it ideal for a wide range of uses—including creative offices, showrooms, or artist studios.

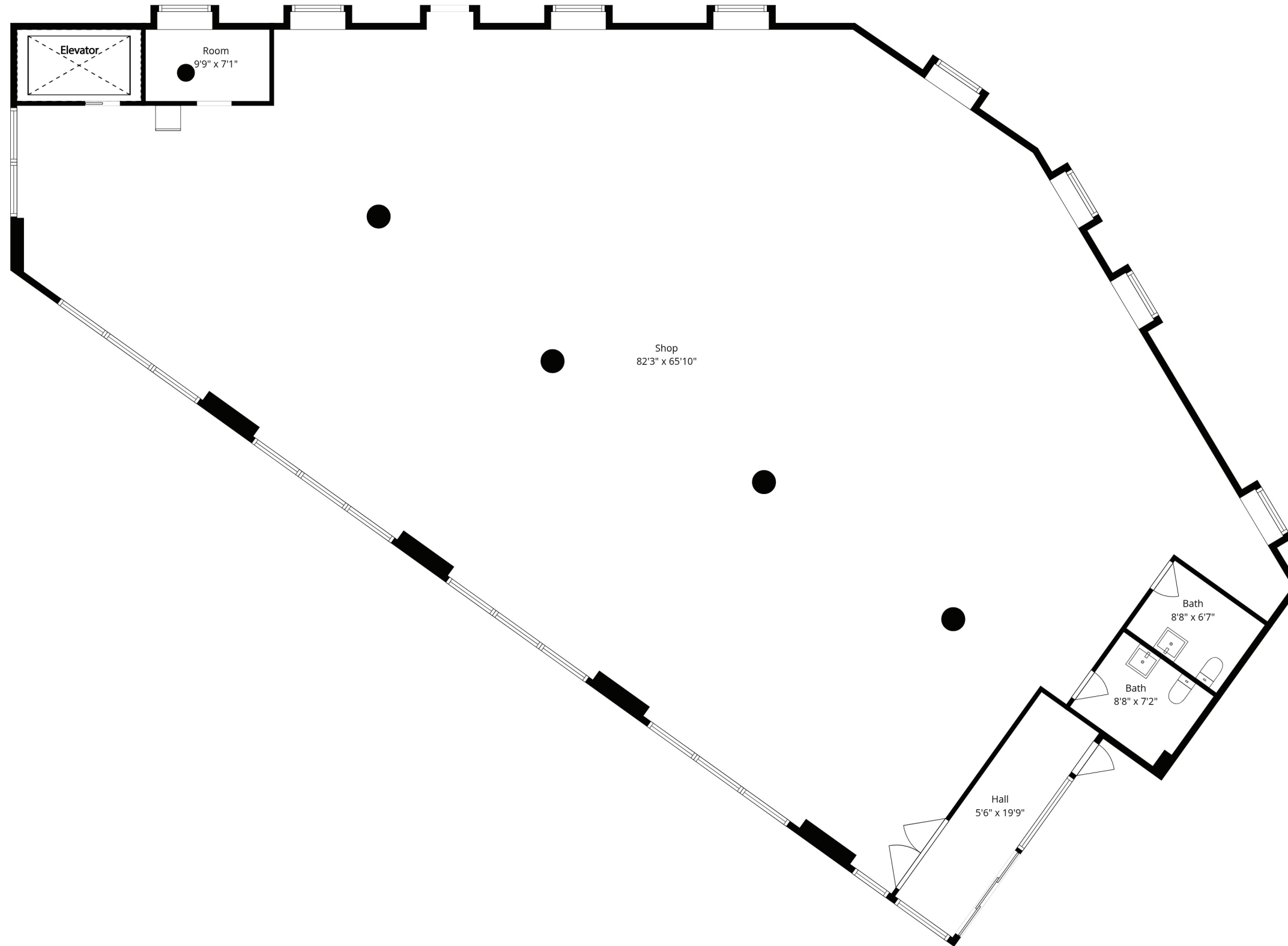
Perfectly positioned near SoHo, Tribeca, and major transportation including the 1 and C lines, 533 Canal Street combines the authentic character of a historic loft building with the convenience and energy of one of downtown Manhattan's most desirable locations.





LESLIE GARFIELD — 533 CANAL STREET #2

FLOORPLAN



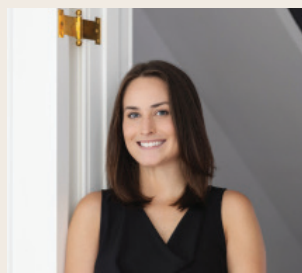
INQUIRE ABOUT THIS PROPERTY



Richard Pretsfelder
212.574.6965
RDP@lesliegarfield.com



Sophie Smadbeck
212.574.6970
SS@lesliegarfield.com



Morgan Garofalo
212-574-6975
MG@lesliegarfield.com

LESLIE GARFIELD

Specializing in
New York City Luxury Real Estate

+1 (212) 371 - 8200
lesliegarfield.com

505 Park Ave. Suite 303
New York, NY 10022

122 Montague Street, 2nd Floor
Brooklyn, NY 11201

All information provided by us has been secured from sources we believe to be reliable, but we make no representations or warranties, expressed or implied, as to the accuracy of the information. References to square footage or age are approximate. Buyers must verify all information and bear the risk for any inaccuracies. Any projections, opinions, assumptions or estimates used herein are for example purposes only and do not represent the current or future performance of the property

© Leslie J Garfield & Co. 2023 All Rights Reserved.