

14851-14855 W. ELEVEN MILE RD  
OAK PARK, MICHIGAN



**SIGNATURE  
ASSOCIATES**  
KNOW SIGNATURE | KNOW RESULTS

INDUSTRIAL FOR LEASE  
3,600 Square Feet Available



## PROPERTY FEATURES

- 3,600 square feet available
- 14' clear height
- (1) 10' x 12' grade level door
- Building was recently acquired and being completely renovated inside and out: exterior façade, new roof, tuck points and block/brick sealed and painted, new energy efficient windows and new parking lot
- Main road exposure to many different businesses including service industry, especially home renovation, and those that have drive-by business
- Zoned Industrial/Flex District - to foster a mixture of live/work and maker space that complements and transitions to nearby commercial, residential, and industrial districts which allows for a move to higher density, adaptive reuse and/or modern infill to accommodate an electric live/work mixture of uses
- Lease Rate: Contact Brokers



For more information, please contact:

**KRIS PAWLOWSKI**  
(248) 359 3801  
kpawlowski@signatureassociates.com

**PAUL HOGE**  
(248) 948 0103  
paulhoge@signatureassociates.com

**SIGNATURE ASSOCIATES**  
One Towne Square, Suite 1200  
Southfield, MI 48076  
www.signatureassociates.com

14851 – 14855 W. Eleven Mile Rd – Oak Park, MI  
Industrial For Lease

3,600  
Square Feet  
AVAILABLE

### Additional Renderings



For more information, please contact:

**KRIS PAWLOWSKI**  
(248) 359 3801  
kpawlowski@signatureassociates.com

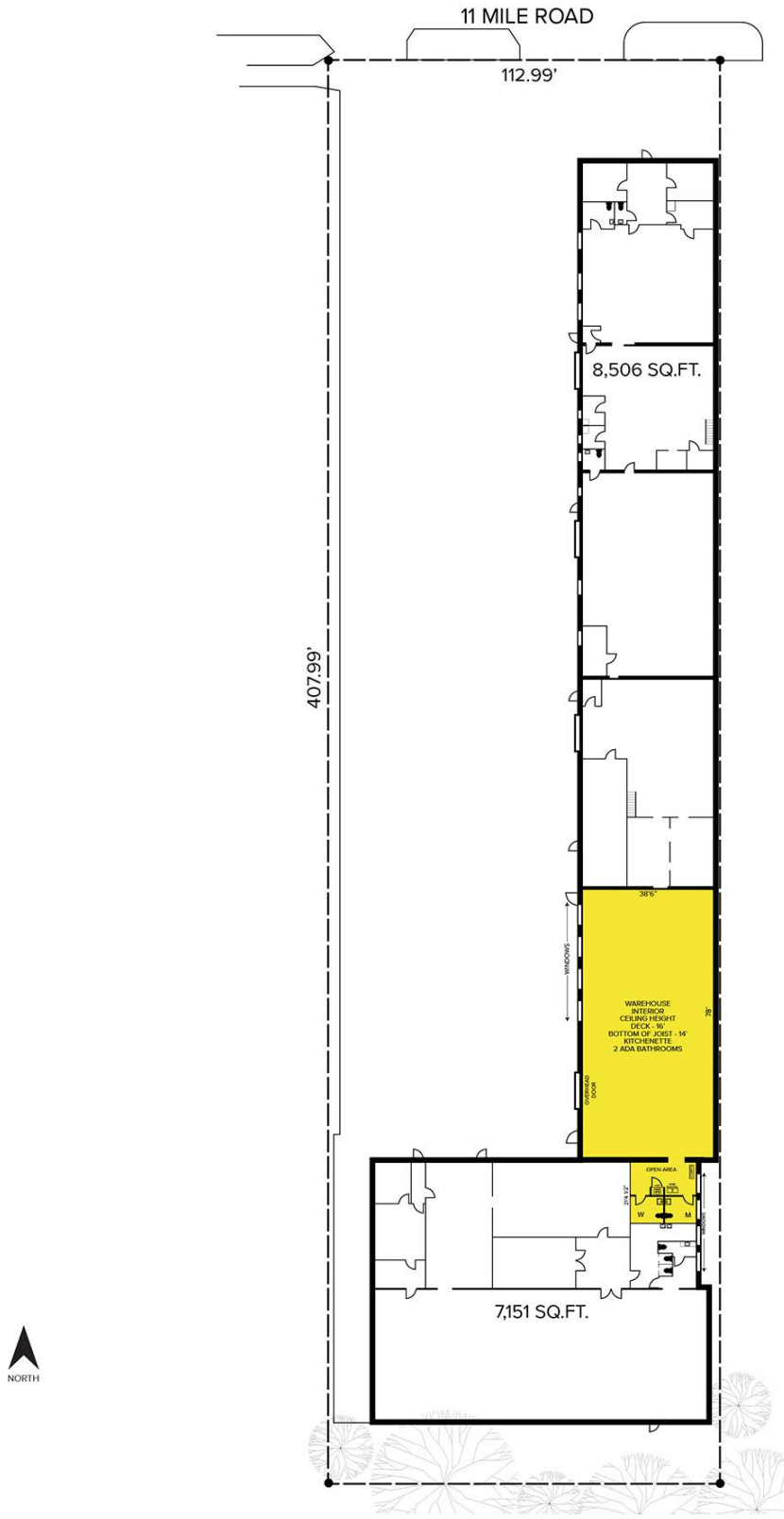
**PAUL HOGE**  
(248) 948 0103  
paulhoge@signatureassociates.com

**SIGNATURE ASSOCIATES**  
One Towne Square, Suite 1200  
Southfield, MI 48076  
www.signatureassociates.com

# 14851 – 14855 W. Eleven Mile Rd – Oak Park, MI Industrial For Lease

3,600  
Square Feet  
AVAILABLE

## Site Plan



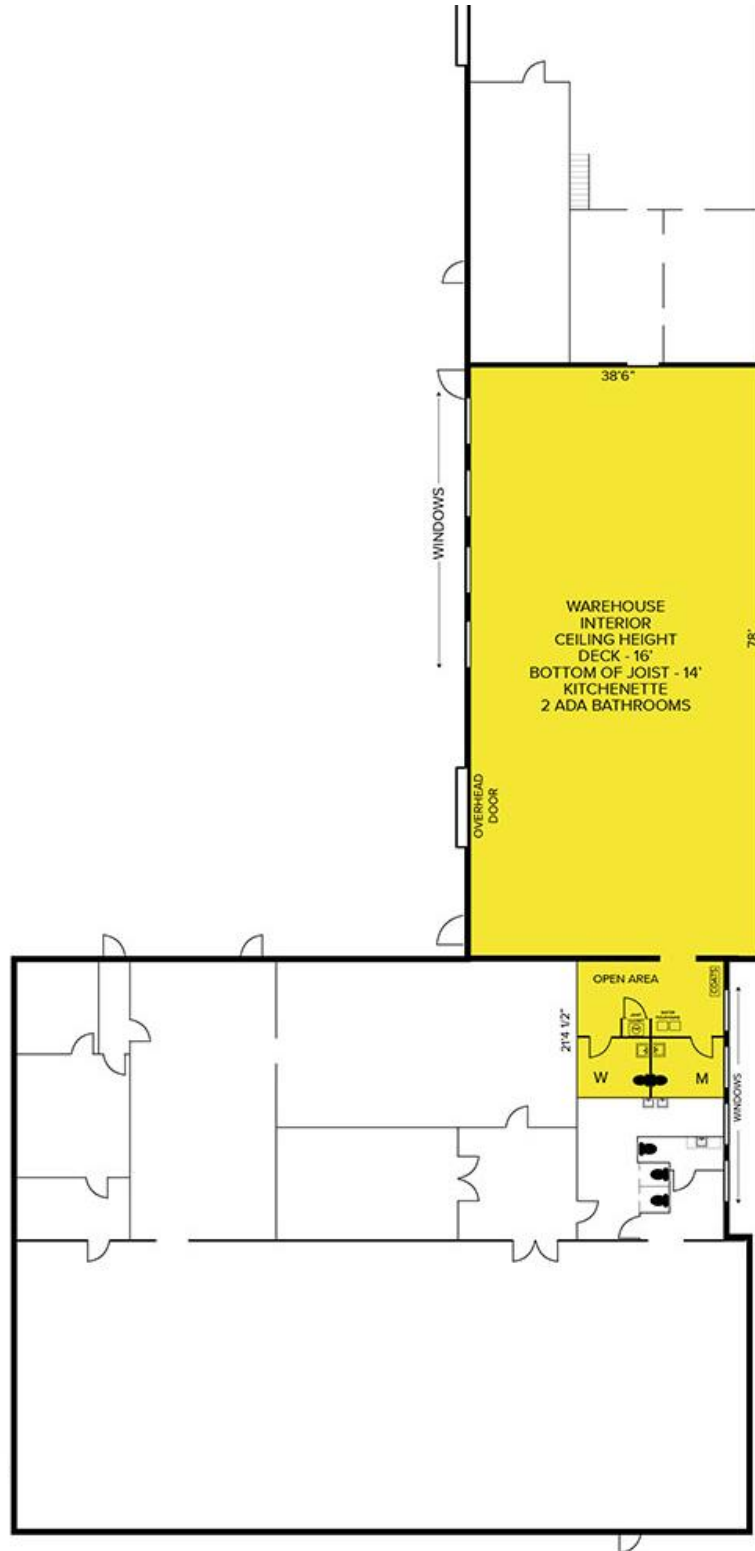
For more information, please contact:

**KRIS PAWLOWSKI**  
(248) 359 3801  
kpawlowski@signatureassociates.com

**PAUL HOGE**  
(248) 948 0103  
paulhoge@signatureassociates.com

**SIGNATURE ASSOCIATES**  
One Towne Square, Suite 1200  
Southfield, MI 48076  
www.signatureassociates.com

Floor Plan



For more information, please contact:

**KRIS PAWLOWSKI**  
(248) 359 3801  
kpawlowski@signatureassociates.com

**PAUL HOGE**  
(248) 948 0103  
paulhoge@signatureassociates.com

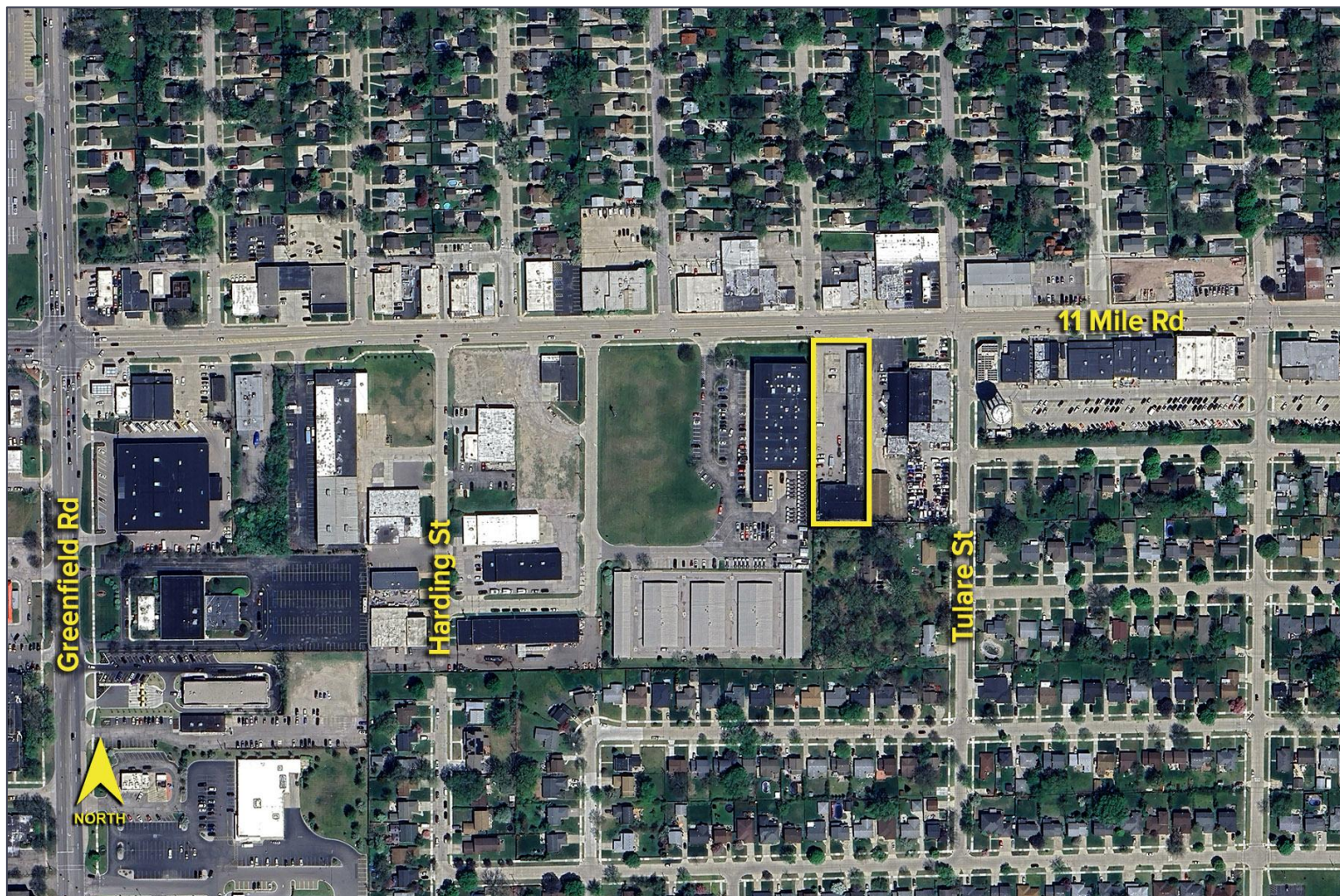
**SIGNATURE ASSOCIATES**  
One Towne Square, Suite 1200  
Southfield, MI 48076  
www.signatureassociates.com

# 14851 – 14855 W. Eleven Mile Rd – Oak Park, MI

Industrial For Lease

3,600  
Square Feet  
AVAILABLE

Aerial



For more information, please contact:

**KRIS PAWLOWSKI**  
(248) 359 3801  
kpawlowski@signatureassociates.com

**PAUL HOGE**  
(248) 948 0103  
paulhoge@signatureassociates.com

**SIGNATURE ASSOCIATES**  
One Towne Square, Suite 1200  
Southfield, MI 48076  
www.signatureassociates.com