

OLYMPUS HILLS OFFICE

MW

FOR LEASE



PROPERTY DETAILS

3900 SOUTH WASATCH BLVD, SALT LAKE CITY, UT

- 900 SF - 11,949 (divisible) SF Available
- Starting at \$20 / SF Modified Gross
- East Foothill Location
- Direct Access to I-215
- Ease of access to Wasatch Boulevard
- Unique Creative Office
- Tenant Improvements Available
- Ample Parking

2024 DEMOS

EST. POPULATION

1 MILE » 11,198
3 MILE » 62,684
5 MILE » 194,836



EST. DAYTIME POPULATION

1 MILE » 5,178
3 MILE » 37,495
5 MILE » 121,262



EST. HOUSEHOLDS

1 MILE » 4,028
3 MILE » 23,687
5 MILE » 81,268



EST. AVERAGE HH INCOME

1 MILE » \$244,174
3 MILE » \$181,703
5 MILE » \$142,153



MOUNTAIN WEST
COMMERCIAL REAL ESTATE

STEPHANIE BURANEK

sburanek@mwcre.com
direct 801.852.8579
[View Profile](#)



CHAD ARISS

aimregroup@gmail.com
direct 385.401.5553
[View Profile](#)

FULL SERVICE COMMERCIAL REAL ESTATE

312 East South Temple
Salt Lake City, Utah 84111
Office 801.456.8800
www.mwcre.com

DRIVE TIMES



CLOSE AERIAL



MOUNTAIN WEST
COMMERCIAL REAL ESTATE

STEPHANIE BURANEK

sburanek@mwcre.com
direct 801.852.8579
[View Profile](#)



CHAD ARISS

aimregroup@gmail.com
direct 385.401.5553
[View Profile](#)

**FULL SERVICE
COMMERCIAL REAL ESTATE**

312 East South Temple
Salt Lake City, Utah 84111
Office 801.456.8800
www.mwcre.com

OLYMPUS HILLS OFFICE



SITE PLAN



MOUNTAIN WEST
COMMERCIAL REAL ESTATE

STEPHANIE BURANEK

sburanek@mwcre.com
direct 801.852.8579
[View Profile](#)

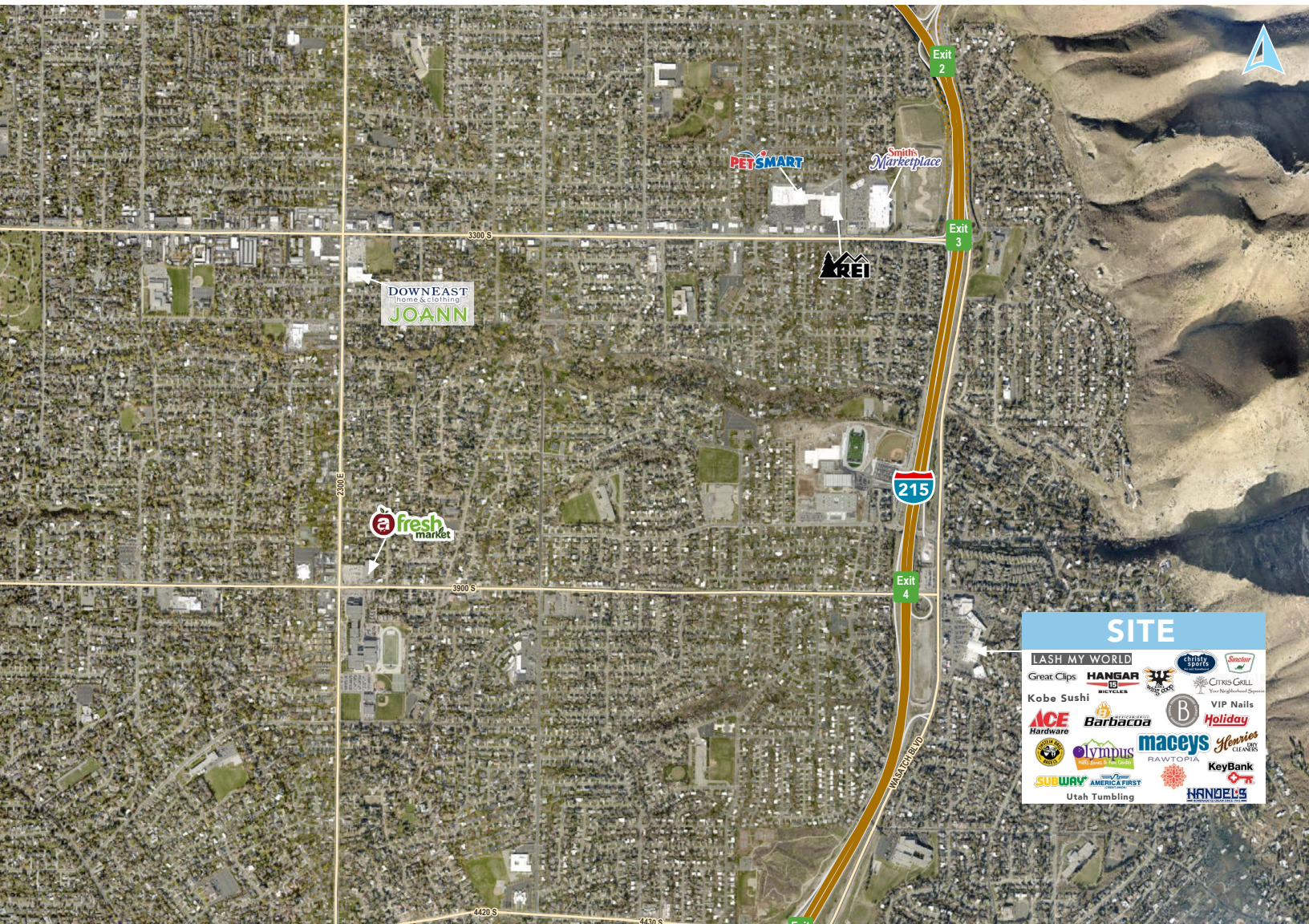


CHAD ARISS

aimregroup@gmail.com
direct 385.401.5553
[View Profile](#)

**FULL SERVICE
COMMERCIAL REAL ESTATE**

312 East South Temple
Salt Lake City, Utah 84111
Office 801.456.8800
www.mwcre.com



- SITE**
- LASH MY WORLD
 - Great Clips
 - Kobe Sushi
 - ACE Hardware
 - SUBWAY
 - chris sports
 - HANGAR BICYCLES
 - BARBACOA
 - LYMBUS
 - AMERICA FIRST
 - Utah Tumbling
 - Smiley
 - CITRUS GRILL
 - VIP Nails
 - Holiday
 - RAWTOPIA
 - KeyBank
 - HANDEL'S



MOUNTAIN WEST
COMMERCIAL REAL ESTATE

STEPHANIE BURANEK
sburanek@mwcre.com
direct 801.852.8579
[View Profile](#)



CHAD ARISS
aimregroup@gmail.com
direct 385.401.5553
[View Profile](#)

**FULL SERVICE
COMMERCIAL REAL ESTATE**
312 East South Temple
Salt Lake City, Utah 84111
Office 801.456.8800
www.mwcre.com