



Plainview Point I Office Building – 10507 Timberwood Circle, Louisville, KY

NTS is pleased to present Plainview Point I, an exciting leasing opportunity at 10507 Timberwood Circle. Built in 1979, Plainview Point I features 2 floors with approximately 30,000 square feet of first class office space. Please see the information below for more details:

FOR LEASE

- Class B+ 2-story Office Building & Corporate Campus
- Building Signage Available for Qualifying Lease
- Campus Setting with Outdoor Patio and Break Area
- 24-hour On-Call Maintenance Services
- Excellent Location Near I-64/I-264 & Hurstbourne/Shelbyville
- Abundant On-Site Parking
- Minutes From the Louisville International Airport
- Managed and Leased by NTS Development Company

For more information or to schedule a tour, please contact:

Tony Fluhr, SIOR, CCIM

Managing Director
502.429.9820
tfluhr@ntsdevco.com

Mark Meredith, CCIM

Director of Commercial Leasing
502.429.9827
mmeredith@ntsdevco.com

www.ntsdevelopment.com

NTS

BUILDING OVERVIEW

SPECIFICATIONS

Type: Class B+ Office Building

SF: 30,000 SF

Stories: 2

Typical Floor: 15,000 SF

Year Built: 1979

Elevators: 1

HVAC: Roof Top Units & Perimeter Zone-Line Units

Parking: Surface, ~4.5 per 1,000 SF

HIGHLIGHTS & AMENITIES



Excellent Location Near I-64/I-264 & Hurstbourne/Shelbyville



Minutes from the Louisville International Airport



Building Conference/Training Room



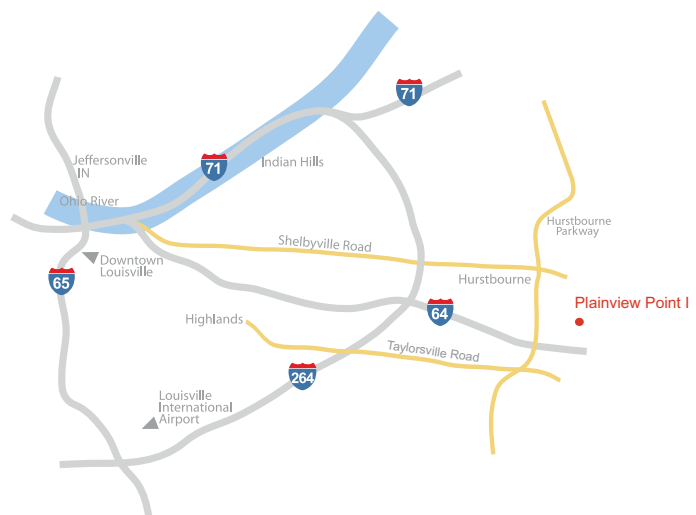
Building Fitness Center



24-hour On-Call Maintenance Services

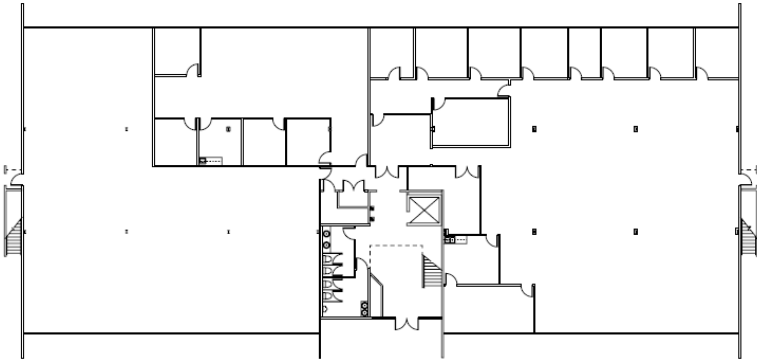


Managed and Leased by NTS Development Company

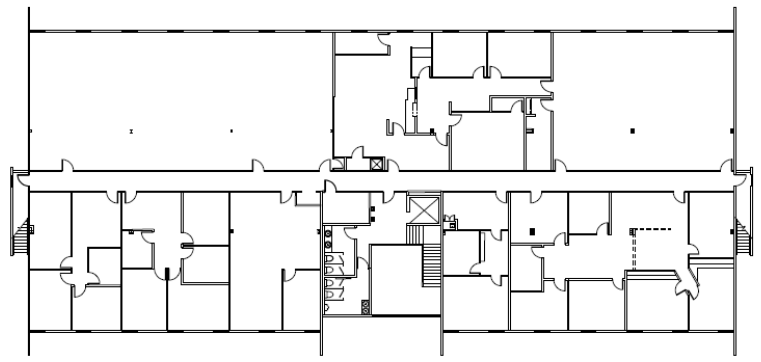


Although all information furnished regarding the property for sale, rental, or financing is from sources deemed reliable, such information has not been verified and no express representation is made nor is any to be implied as to the accuracy thereof and it is submitted subject to errors, omissions, change of price, rental or other changes or conditions, prior sale, lease financing, or withdrawal without notice and to any special conditions imposed by our principal.

AVAILABLE FLOOR PLANS



First Floor | 14,810 RSF



Second Floor | 15,046 RSF



Although all information furnished regarding the property for sale, rental, or financing is from sources deemed reliable, such information has not been verified and no express representation is made nor is any to be implied as to the accuracy thereof and it is submitted subject to errors, omissions, change of price, rental or other changes or conditions, prior sale, lease financing, or withdrawal without notice and to any special conditions imposed by our principal.