

FOR LEASE

3 LIEBICH LANE, HALFMOON, NY



FOR MORE INFORMATION:

Continuum Commercial Realty | 9 Clifton Country Road | Clifton Park, NY 12065 | Office: 518.371.0200

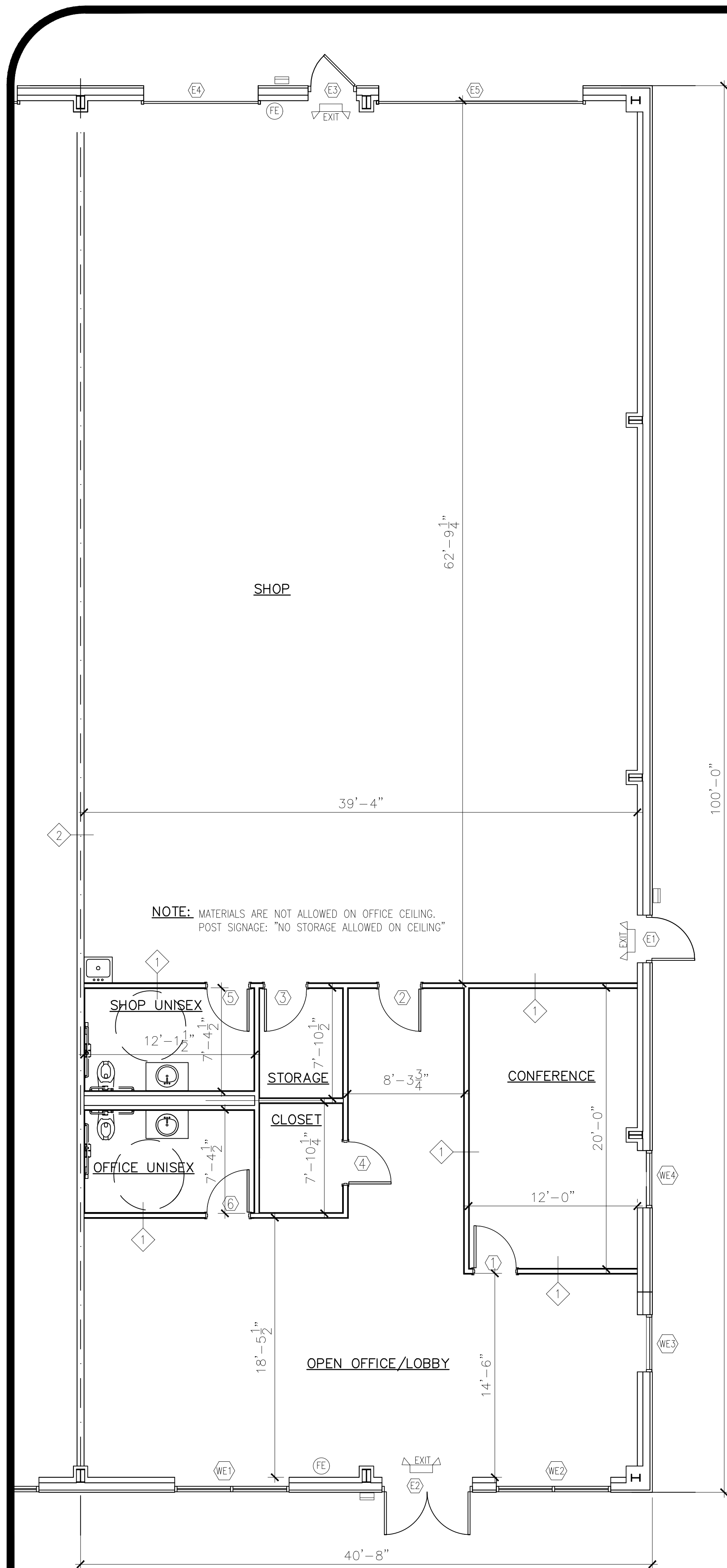
DEAN TAYLOR

Mobile: 518.361.0246

518.371.0200

deantaylor518@gmail.com

CONTINUUM
COMMERCIAL REALTY

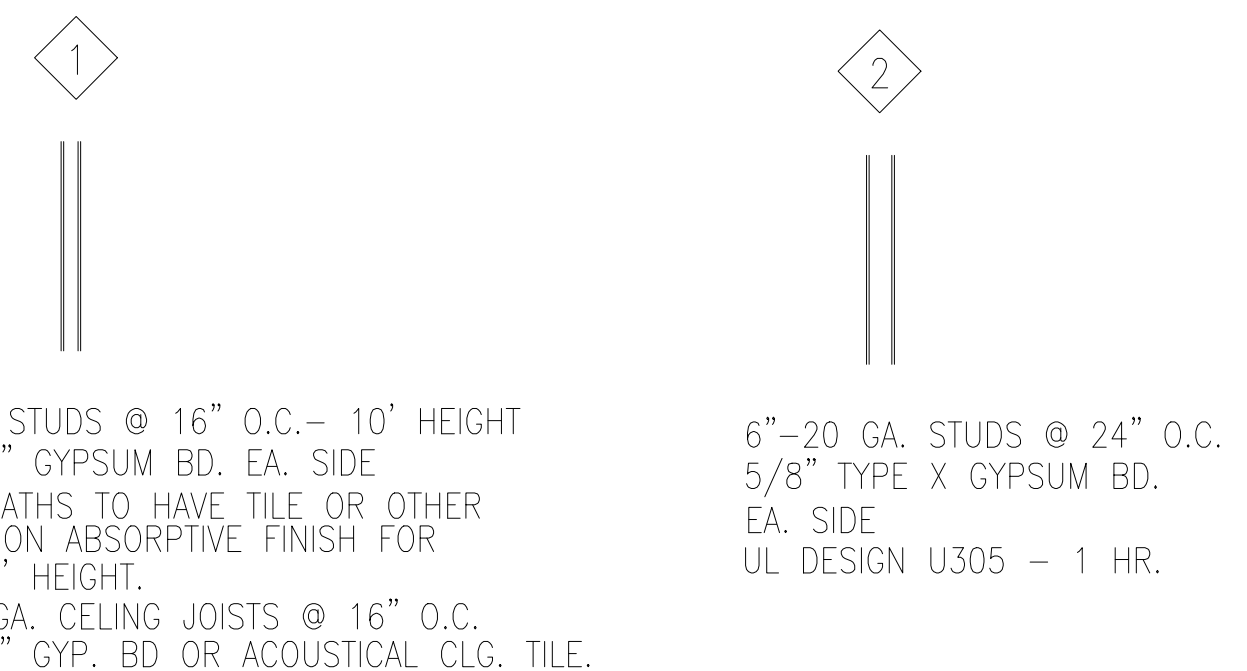


FLOOR PLAN
SCALE: 3/16"=1'-0"

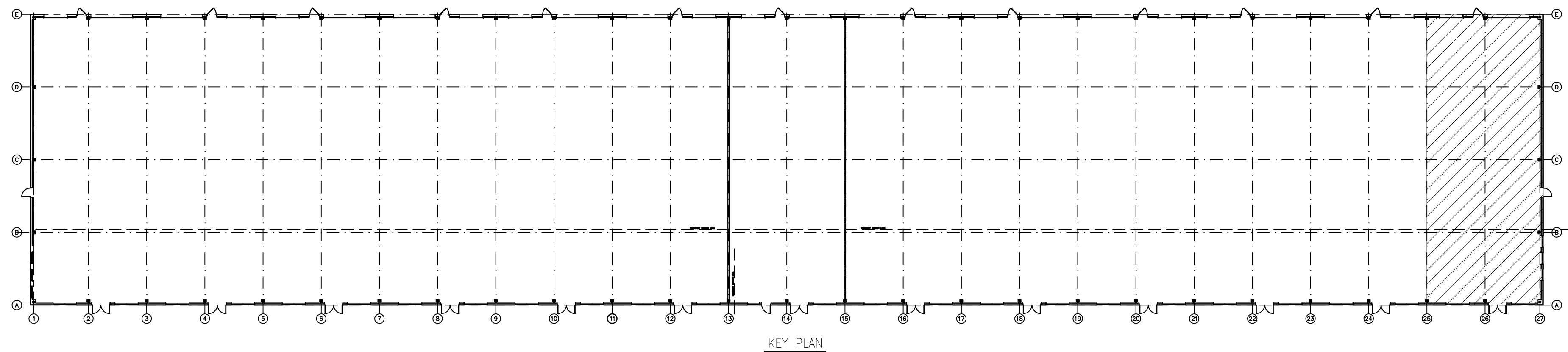
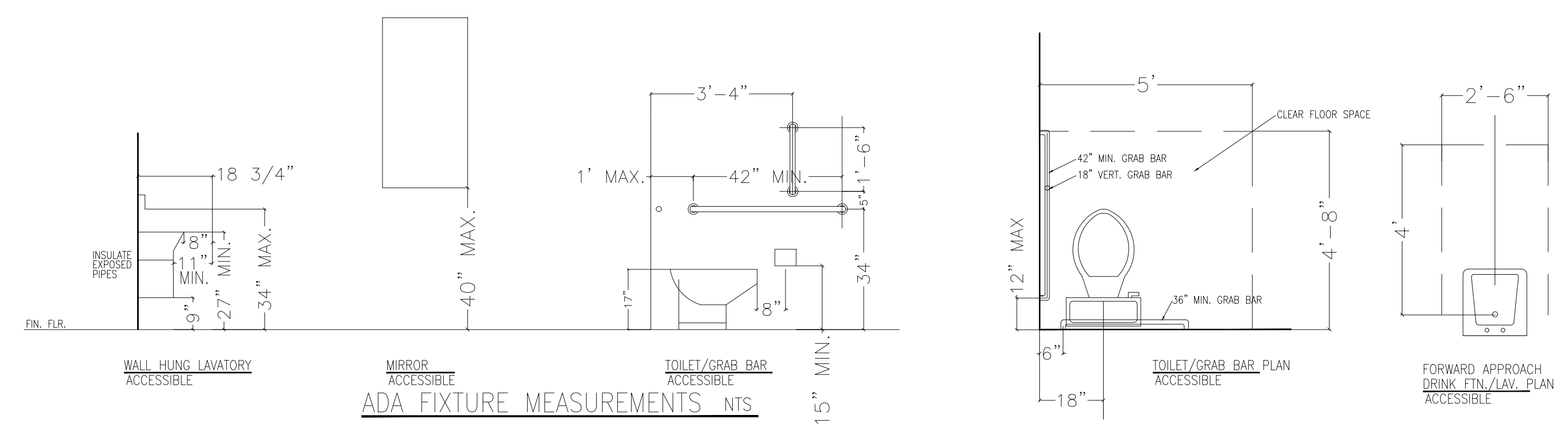
NEW DOOR SCHEDULE				
DOOR MARK	DOOR SIZE	MATERIAL	INSUL.	NOTES
1	3'-0" X 7'-0"	HOLLOW METAL	NO	LEVER LOCKSET
2	3'-0" X 7'-0"	HOLLOW METAL	NO	LEVER LOCKSET
3	3'-0" X 7'-0"	HOLLOW METAL	NO	LEVER LOCKSET
4	3'-0" X 7'-0"	HOLLOW METAL	NO	LEVER LOCKSET
5	3'-0" X 7'-0"	HOLLOW METAL	NO	LEVER LOCKSET
6	3'-0" X 7'-0"	HOLLOW METAL	NO	LEVER LOCKSET

EXISTING DOOR SCHEDULE (TO REMAIN)				
DOOR MARK	DOOR SIZE	MATERIAL	INSUL.	NOTES
E1	3'-0" X 7'-0"	HOLLOW METAL	YES	LEVER LOCKSET
E2	6'-0" X 7'-0"	ALUM/GLS.	YES	PUSH/PULL
E3	3'-0" X 7'-0"	HOLLOW METAL	YES	LEVER LOCKSET
E4	8'-0" X 10'-0"	STEEL	YES	OH DOOR
E5	14'-0" X 14'-0"	STEEL	YES	OH DOOR

NOTE: EXISTING WINDOWS TO REMAIN WE1 THRU WE4



WALL TYPE LEGEND
NTS



EMERGENCY EQUIPMENT LEGEND

- EXIT/EMER COMBO UNIT W/BATTERY BACKUP
- EMERGENCY LIGHT PACK W/ BATTERY BACKUP
- PORTABLE FIRE EXTINGUISHER (5 LB A,B,C)
- EXTERIOR EMERGENCY LIGHT W/ BATTERY BACKUP

General Notes

CODE REVIEW:

OVERALL BLDG. AREA: 52,000 S.F.
 AGM TENANT AREA: 4,000 S.F. TOTAL
 2,520 S.F. WAREHOUSE
 1,480 S.F. OFFICE

MIXED OCCUPANCY CLASSIFICATION: S1/B
 OCCUPANT LOAD: 20 OCCUPANTS TOTAL
 WAREHOUSE: 2,520/500 = 6
 OFFICE: 1,480/100 = 15
 CONSTRUCTION CLASSIFICATION: 2b
 SPRINKLER SYSTEM: YES
 ALLOWABLE BASE FIRE AREA: 70,000 S.F.

FIT-UP FLOOR PLAN, SCHEDULES, ETC.

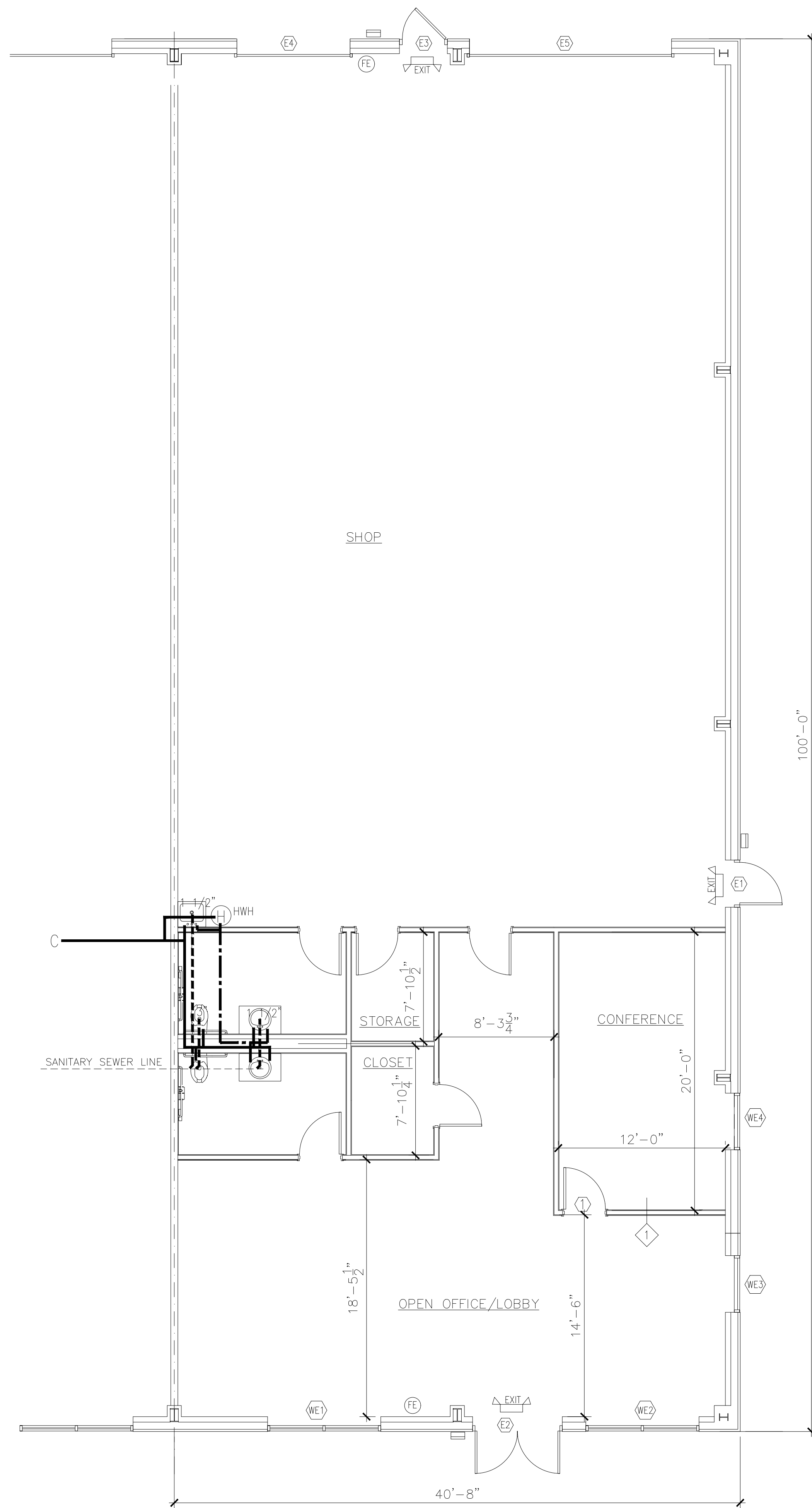
No.	Revision/Issue	Date

Mark P. Bergeron
NYS Lic. No. 067785

MARK P. BERGERON, PE
 800 ROUTE 146
 EXECUTIVE SUITES BUILDING 400
 SUITE 481
 CLIFTON PARK, NY 12065
 PHONE: (518) 248-0906

PROJECT:
 OFFICE/WAREHOUSE FLEX PARK
 ADAMS TRUCKING TENANT FIT-UP
 3 LEIBICH LANE
 HALFMOON, NY

Project ADAMS A1	A1
Date 6-8-18	
Scale NOTED	



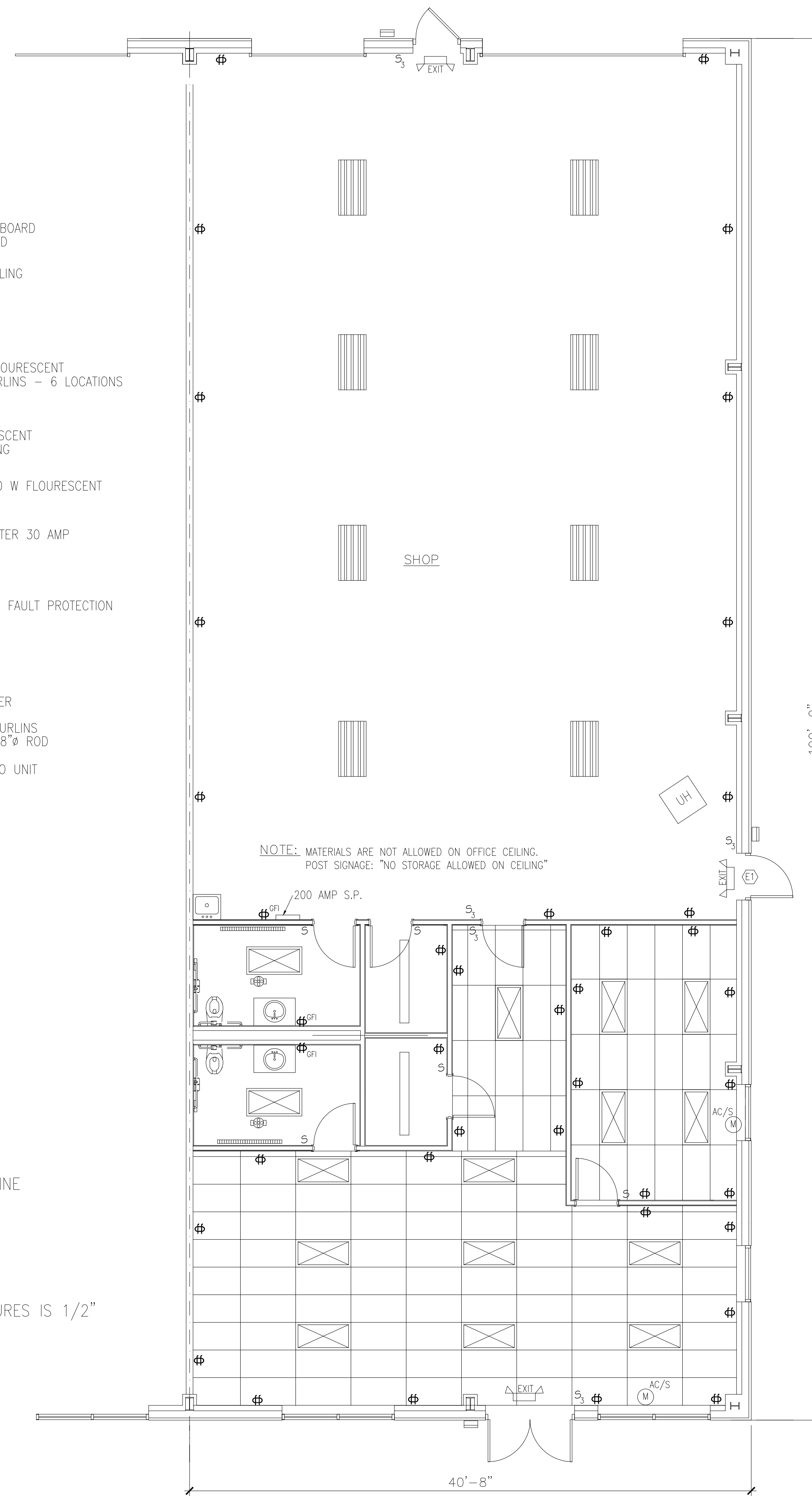
PLUMBING PLAN
SCALE: 3/16"=1'-0"

ELECTRICAL LEGEND

- ALTERNATE ELECTRIC BASEBOARD HEATER—TO BE DETERMINED
- COMBINATION HEATING/COOLING DUCTLESS SPLIT UNIT
- 200 AMP SERVICE PANEL
- T5 HIGH OUTPUT 30 W FLOURESCENT SUSPEND FROM ROOF PURLINS - 6 LOCATIONS
- 2' X 4' 2 BULB T1 30 W FLOURESCENT ATTACH TO CEILING FRAMING
- 1 BULB 6' LINEAR 30 W FLOURESCENT
- HWH 40 GAL. HOT WATER HEATER 30 AMP
- DUPLEX OUTLET
- DUPLEX OUTLET W/ GROUND FAULT PROTECTION
- SINGLE POLE SWITCH
- SINGLE POLE 3 WAY SWITCH
- UH 150,000 BTU UNIT HEATER GAS FIRED SUSPEND FROM ROOF PURLINS WITH UNIT STUT AND 3/8" ROD
- EXHAUST FAN/LIGHT COMBO UNIT

PLUMBING LEGEND

- HWH 40 GAL. HOT WATER HEATER
 - GAS LINE
 - EXIST SANITARY DRAIN LINE
 - PVC DRAIN LINE
 - HOT WATER SUPPLY
 - COLD WATER SUPPLY
- WATER SUPPLY TO PLUMBING FIXTURES IS 1/2"



ELECT/MECH PLAN
SCALE: 3/16"=1'-0"

General Notes

CODE REVIEW:

OVERALL BLDG. AREA: 52,000 S.F.
 AGM TENANT AREA: 4,000 S.F. TOTAL
 2,520 S.F. WAREHOUSE
 1,480 S.F. OFFICE

MIXED OCCUPANCY CLASSIFICATION: S1/B
 OCCUPANT LOAD: 20 OCCUPANTS TOTAL
 WAREHOUSE: 2,520/500 = 6
 OFFICE: 1,480/100 = 15
 CONSTRUCTION CLASSIFICATION: 2b
 SPRINKLER SYSTEM: YES
 ALLOWABLE BASE FIRE AREA: 70,000 S.F.

FIT-UP MEP PLANS

No.	Revision/Issue	Date

Mark P. Bergeron
 NYS Lic. No. 067785

MARK P. BERGERON, PE
 800 ROUTE 146
 EXECUTIVE SUITES BUILDING 400
 SUITE 481
 CLIFTON PARK, NY 12065
 PHONE: (518) 248-0906

PROJECT:
 OFFICE/WAREHOUSE FLEX PARK
 ADAMS TRUCKING TENANT FIT-UP
 3 LEIBICH LANE
 HALFMOON, NY

Project ADAMS A2	A2
Date 6-8-18	
Scale NOTED	

FOR LEASE 3 Liebich Lane, Halfmoon, NY



FOR MORE INFORMATION:

Continuum Commercial Realty | 9 Clifton Country Road | Clifton Park, NY 12065 | Office: 518.371.0200

DEAN TAYLOR

Mobile: 518.361.0246

518.371.0200

deantaylor518@gmail.com

CONTINUUM
COMMERCIAL REALTY