



Building 1: 402,500 SF
Building 2: 43,750 SF
Building 3: 127,680 SF

Mercer Junction

250 Mercer Junction, Macon, GA 31210

Development Land for Sale | Proposed Building for Sale/Lease

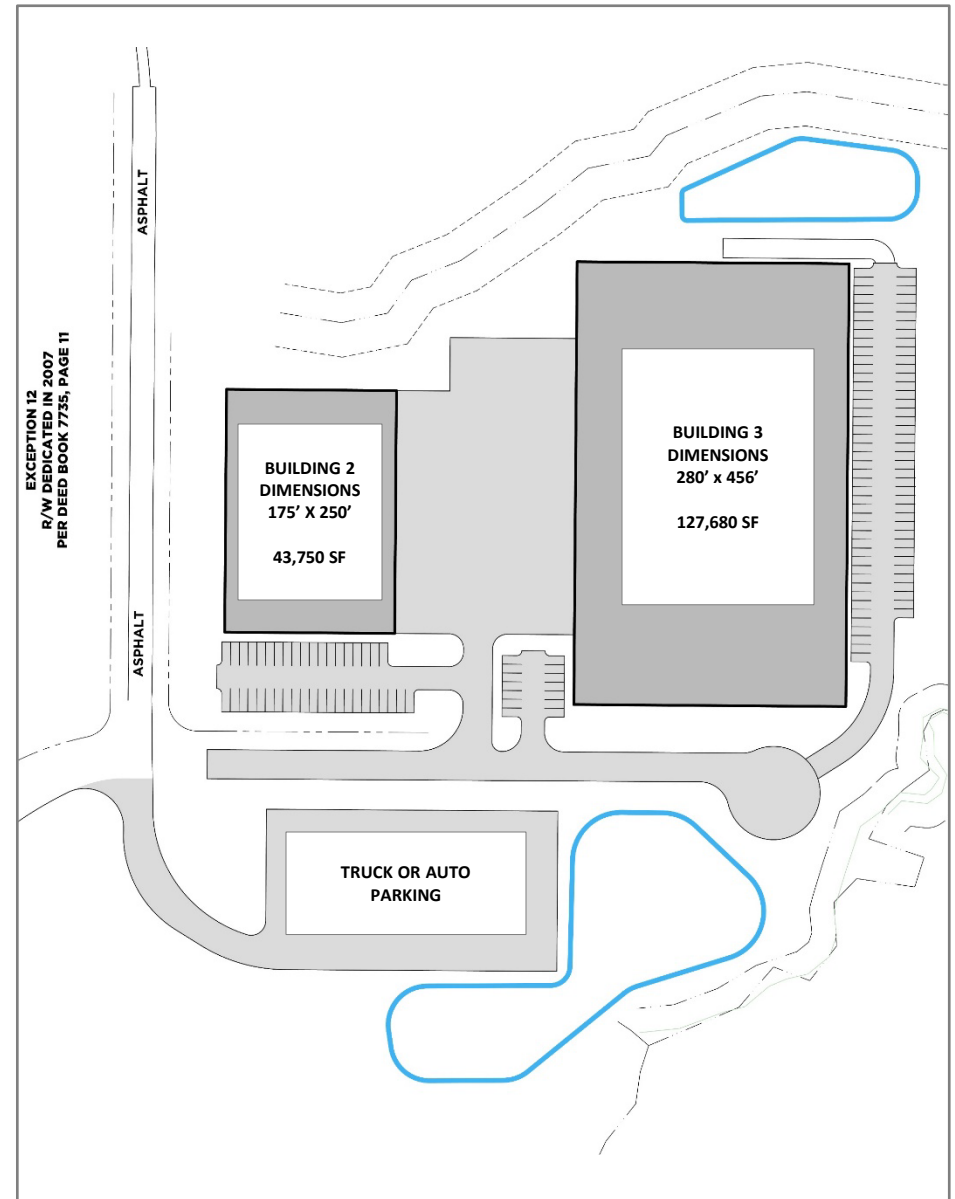
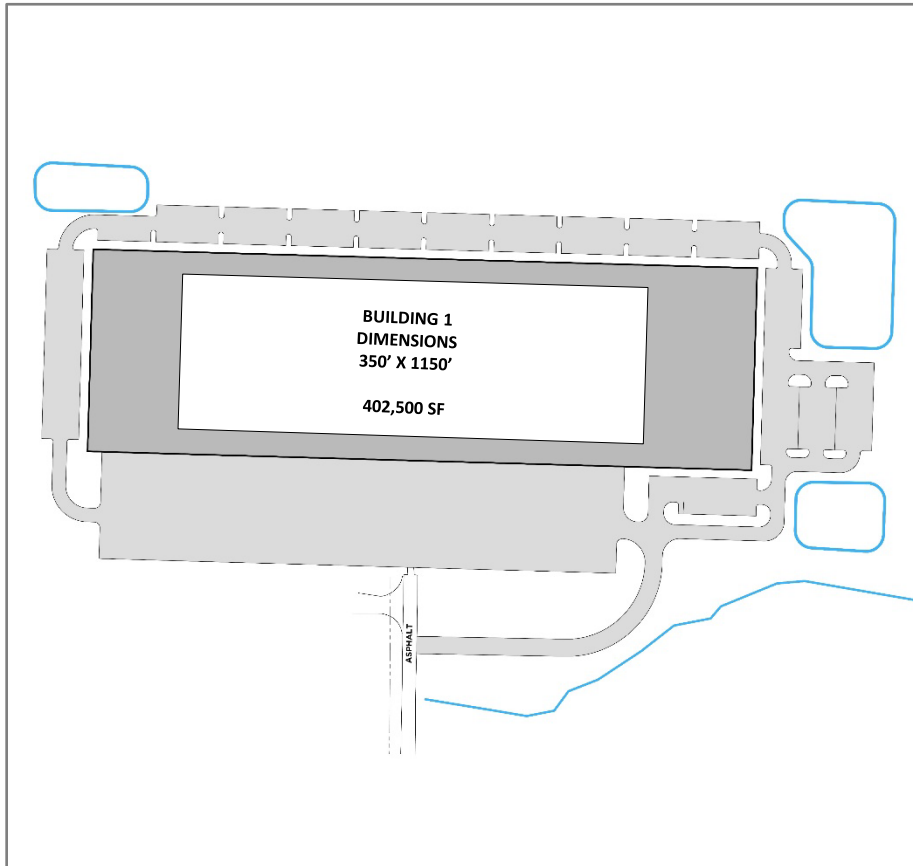


CUSHMAN &
WAKEFIELD

Mercer Junction

250 Mercer Junction, Macon, GA 31210

FLOOR PLAN



Mercer Junction

250 Mercer Junction, Macon, GA 31210

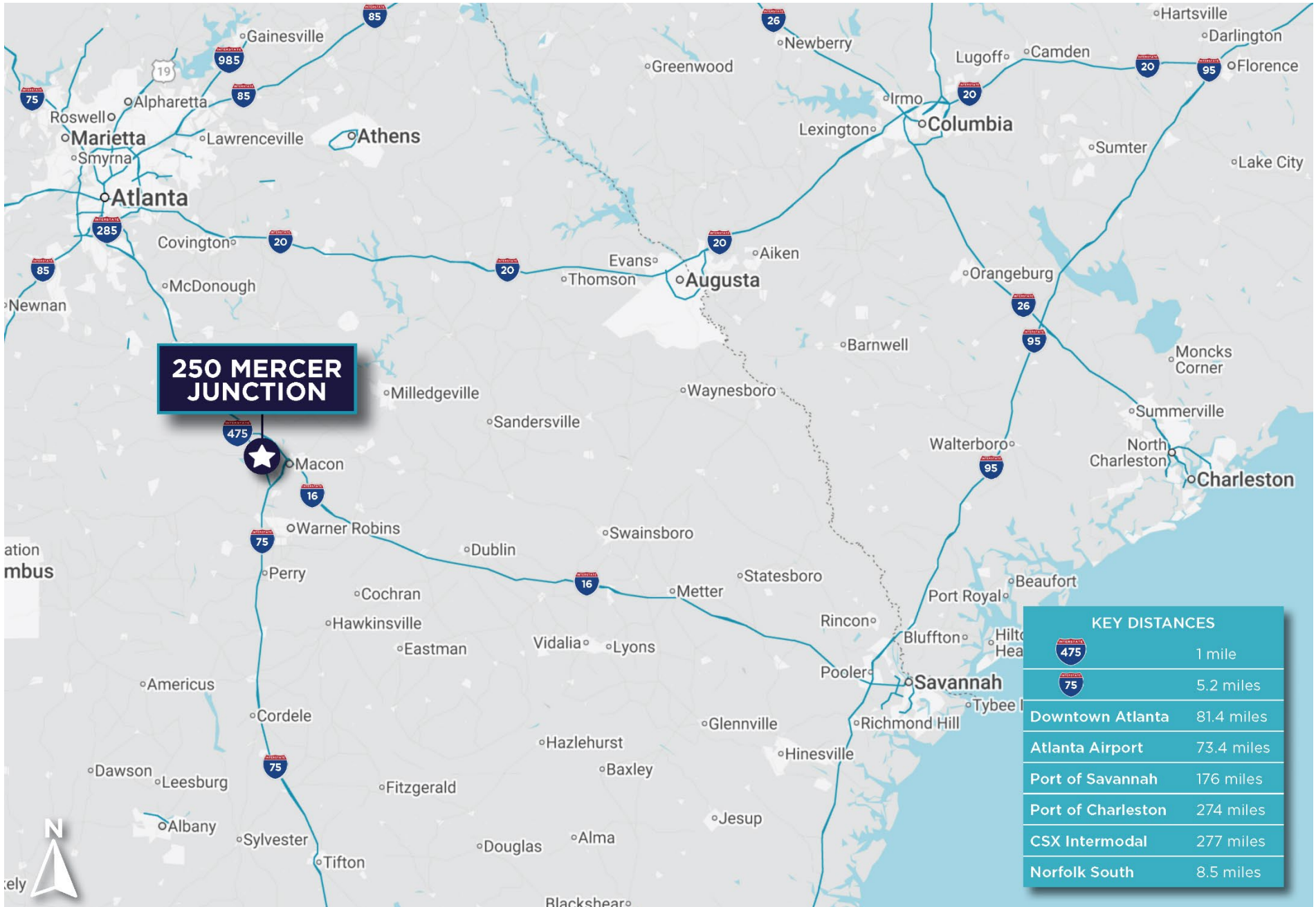
LOCATION MAP



Mercer Junction

250 Mercer Junction, Macon, GA 31210

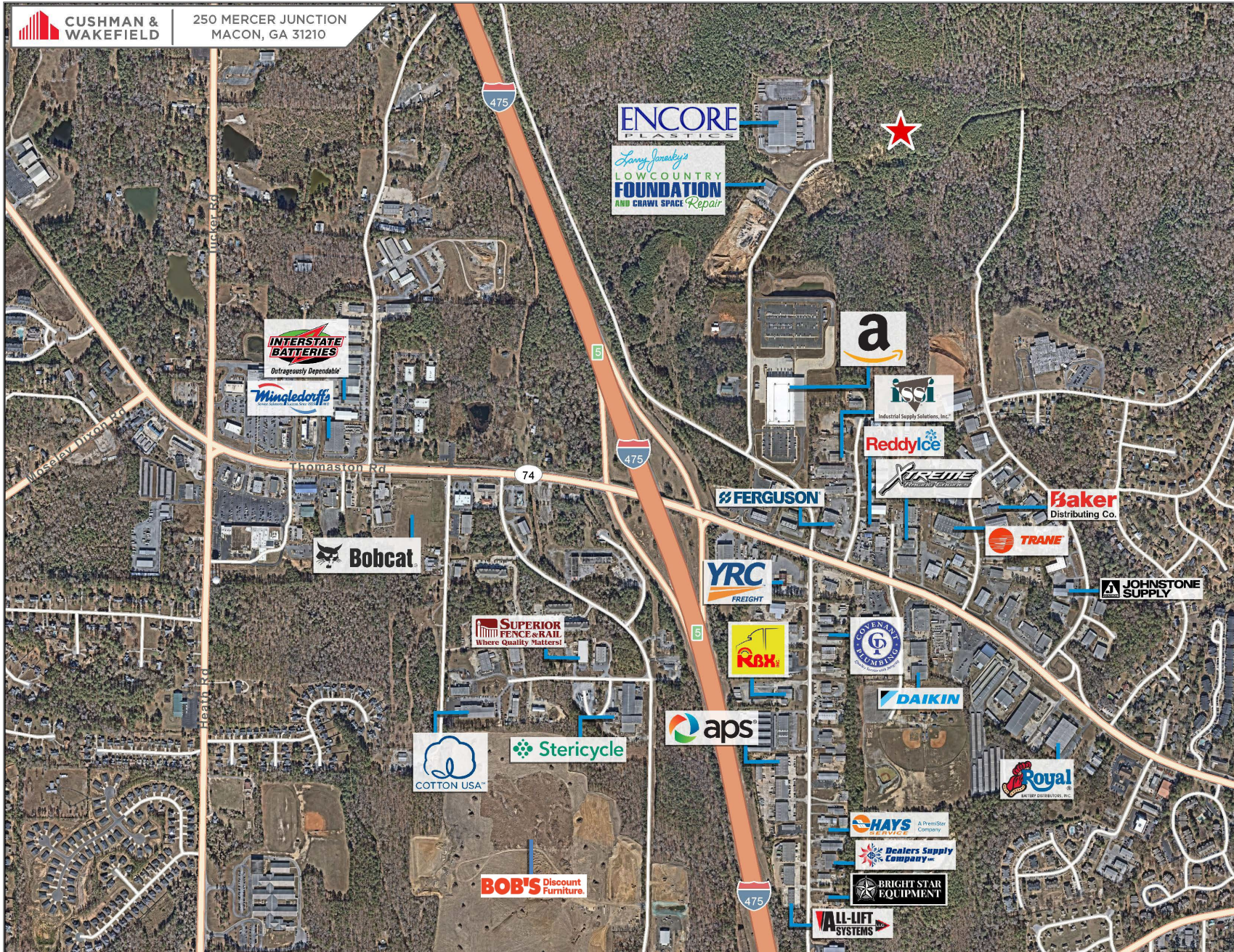
ACCESS MAP



Mercer Junction

250 Mercer Junction, Macon, GA 31210

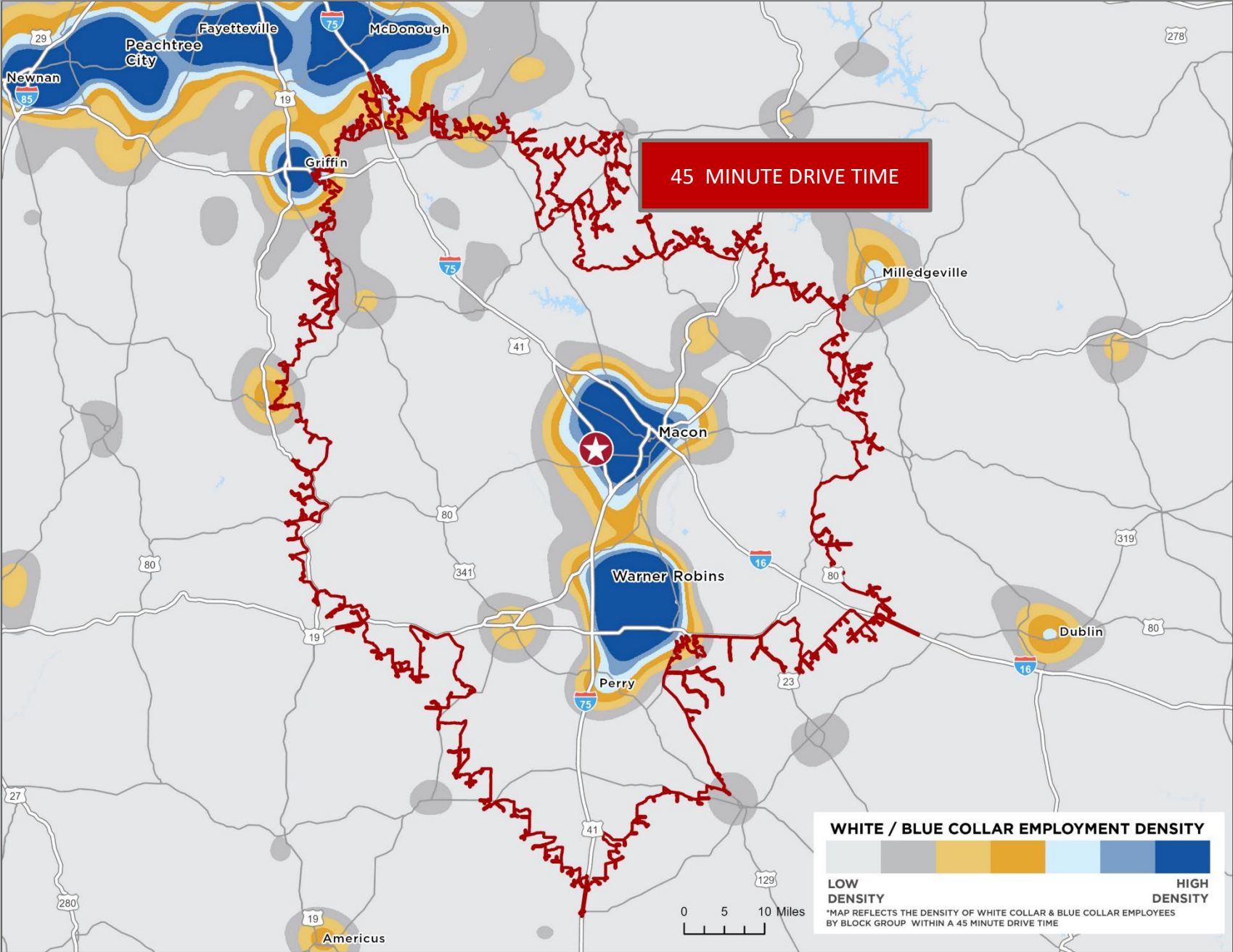
TENANT MAP



Mercer Junction

250 Mercer Junction, Macon, GA 31210

LABOR HEAT MAP



Mercer Junction

250 Mercer Junction, Macon, GA 31210

JOB TAX CREDITS

Georgia provides a statewide job tax credit that could benefit companies located at Mercer Junction Logistics Center. Tier 1 County job tax credits available for this location are \$4,000 per net new job* for 5 years, which can offset 100% of state income tax liability (excess may be applied against employee withholding up to \$3,500/job) with a 10 year carry forward.

**A minimum of 2 net new jobs paying the minimum wage requirement is required to realize this benefit.*

WHO QUALIFIES?

To qualify, the Georgia facility must be engaged in, or the headquarters of, spec specified industry including:

- Manufacturing
- Warehouse, Distribution, Logistics
- Software Development
- FinTech
- Data Centers
- Contact Centers
- Telecommunications
- Research and Development Facilities

JOB TAX CREDIT CALCULATION

To qualify, the Georgia facility must be engaged in, or the headquarters of, spec specified industry including:



Example:

$$\mathbf{\$4,000 \times 100 \times 5 = \$2,000,000}$$

New Jobs Years Total Credits to Claim

Job Tax Credits are subject to program requirements as outlined in O.C.G.A. § 48-7-40 and rules published by the Georgia Department of Community Affairs in Chapter 110-9.1 and the Georgia Department of Revenue in Regulation 560-7-8-.36.



FOR MORE INFORMATION, CONTACT:

Gilbert Valdez, SIOR

Managing Director

Direct +1 404 509 4482

gilbert.valdez@cushwake.com

Chase Walker

Senior Associate

Direct: +1 229 343 0933

chase.walker@cushwake.com

Nick Gonzalez

Senior Associate

Direct: +1 832 785 8888

nick.gonzalez@cushwake.com

©2026 Cushman & Wakefield. All rights reserved. The information contained in this communication is strictly confidential. This information has been obtained from sources believed to be reliable but has not been verified. NO WARRANTY OR REPRESENTATION, EXPRESS OR IMPLIED, IS MADE AS TO THE CONDITION OF THE PROPERTY (OR PROPERTIES) REFERENCED HEREIN OR AS TO THE ACCURACY OR COMPLETENESS OF THE INFORMATION CONTAINED HEREIN, AND SAME IS SUBMITTED SUBJECT TO ERRORS, OMISSIONS, CHANGE OF PRICE, RENTAL OR OTHER CONDITIONS, WITHDRAWAL WITHOUT NOTICE, AND TO ANY SPECIAL LISTING CONDITIONS IMPOSED BY THE PROPERTY OWNER(S). ANY PROJECTIONS, OPINIONS OR ESTIMATES ARE SUBJECT TO UNCERTAINTY AND DO NOT SIGNIFY CURRENT OR FUTURE PROPERTY PERFORMANCE. PD-193938-V3

