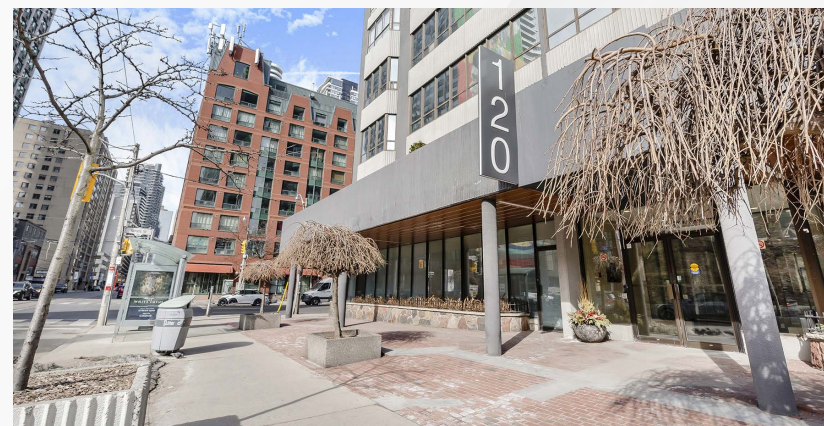


ONE TWENTY
CARLTON
STREET

FOR SALE



OFFICE CONDO FOR SALE AT JARVIS & CARLTON | 120 CARLTON ST, TORONTO



CBRE urban retail team

ONE TWENTY
CARLTON
STREET

FOR SALE

Address: Suite 209 - 120 Carlton Street, Toronto

Size: 1,625 sq. ft.

Asking Price: \$675,000

Taxes (2025) \$7,664.41

Monthly Condo Fees: \$2,401.75

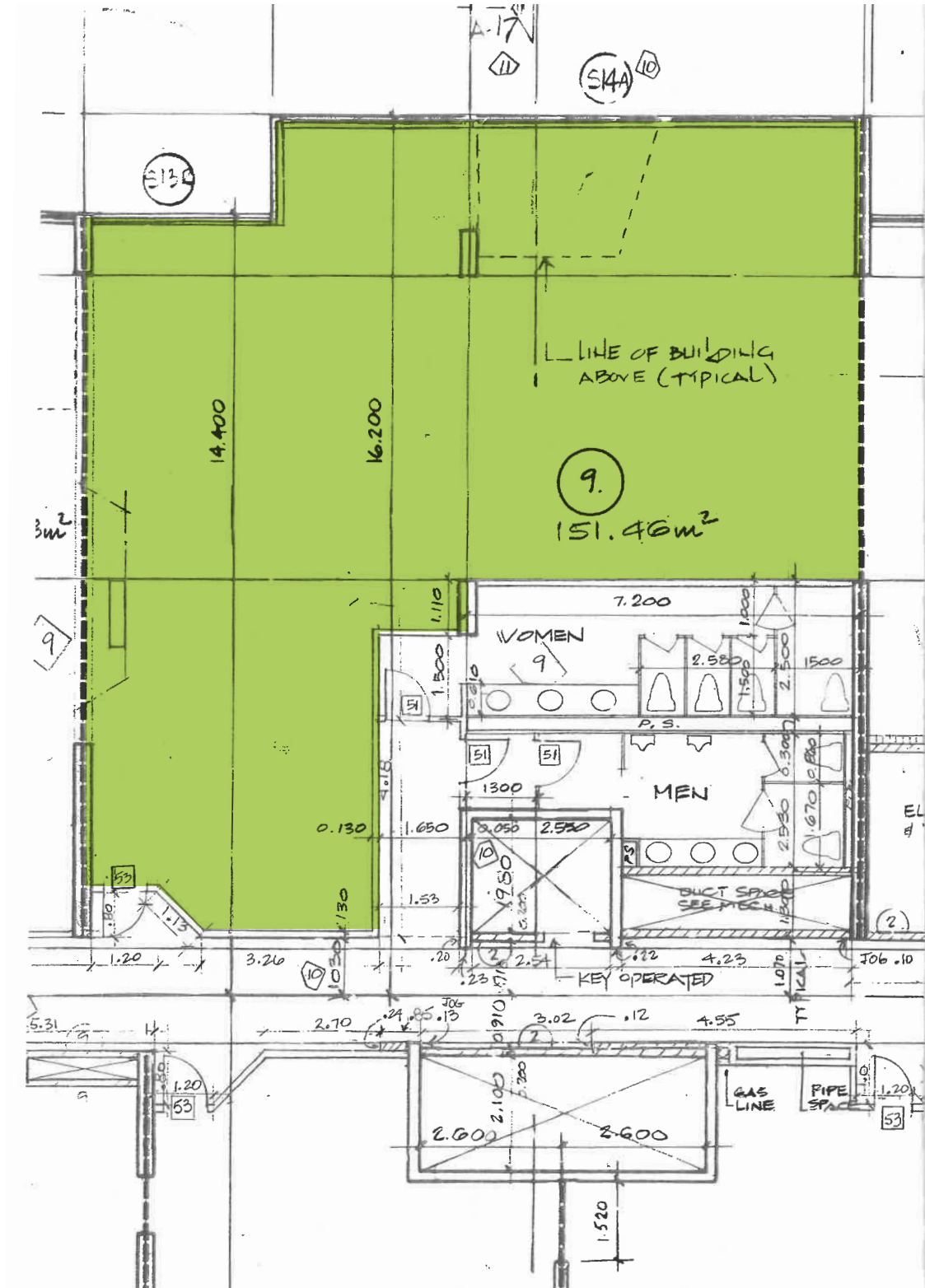
Parking: 4 spaces

Occupancy: Immediately

- Right-sized office/condo space located at the corner of Jarvis Street and Carlton Street, across from Allen Gardens
- Move-in ready. Currently configured with four offices and several workstations
- Includes 4 underground parking stalls
- Occupies a central location in downtown Toronto, steps to College Station
- Located steps from Toronto Metropolitan University, Church-Wellesley neighbourhood, Cabbagetown and Yonge-Dundas Square



FLOOR PLAN - 1,625 SF



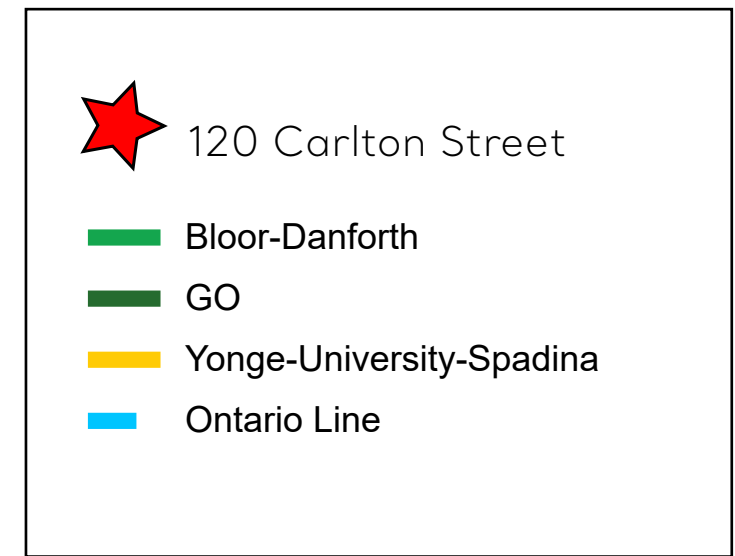


LOCATION MAP



LOCATION OVERVIEW

120 Carlton Street occupies a central location in Downtown Toronto. It benefits greatly from its proximity to Toronto Metropolitan University, the Church-Wellesley Neighbourhood as well as Cabbagetown. It's within walking distance to both Yonge & Dundas and Yonge & Bloor, both home to major shopping/tourist areas (Bloor-Yorkville, Eaton Centre and Yonge-Dundas Square). The property is short 5 minute walk to College subway station and only 4 stops away from Union Station, making it accessible from anywhere in the city.



ADVISORY TEAM

ARLIN MARKOWITZ*
Executive Vice President
416 815 2374
arlin.markowitz@cbre.com

ALEX EDMISON*
Senior Vice President
416 874 7266
alex.edmison@cbre.com

JACKSON TURNER**
Senior Vice President
416 815 2394
jackson.turner@cbre.com

TEDDY TAGGART*
Vice President
416 847 3254
teddy.taggart@cbre.com

EMILY EVERETT*
Sales Associate
647 943 4185
emily.everett@cbre.com

*Sales Representative **Broker



This disclaimer shall apply to CBRE Limited, Real Estate Brokerage, and to all other divisions of the Corporation; to include all employees and independent contractors ("CBRE"). The information set out herein, including, without limitation, any projections, images, opinions, assumptions and estimates obtained from third parties (the "Information") has not been verified by CBRE, and CBRE does not represent, warrant or guarantee the accuracy, correctness and completeness of the Information. CBRE does not accept or assume any responsibility or liability, direct or consequential, for the Information or the recipient's reliance upon the Information. The recipient of the Information should take such steps as the recipient may deem necessary to verify the Information prior to placing any reliance upon the Information. The Information may change and any property described in the Information may be withdrawn from the market at any time without notice or obligation to the recipient from CBRE. CBRE and the CBRE logo are the service marks of CBRE Limited and/or its affiliated or related companies in other countries. All other marks displayed on this document are the property of their respective owners. All Rights Reserved.