



**NATIONAL AVENUE**

**FOR LEASE**

# 1961-1967 National Avenue

Hayward, CA 94545



## CONTACT US

### Mark Maguire

Executive Vice President  
+1 510 219 7854  
mark.maguire@colliers.com  
CA Lic. No. 01190597

### Garrett Dunn

Associate  
+1 9252979449  
garrett.dunn@colliers.com  
CA Lic. No. 02229225

**Colliers**

## Industrial Space with Fenced & Secured Yard

### Project Highlights

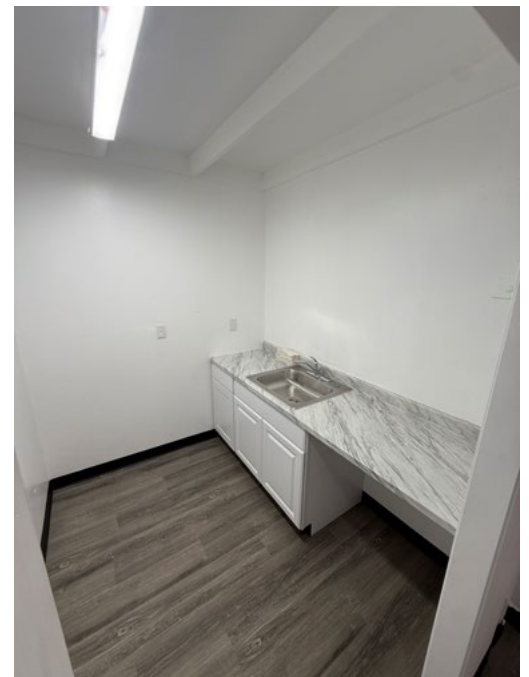
- ±21,884 SF total
- Fenced and secured, concrete yard
- Two (2) separate units
- 400 amp, 120-208 volt, 3 phase (Tenant to confirm)
- Six (6) grade level doors (side and rear)
- ±17' minimum clear height
- I-880 access via W Winton Avenue
- HWY-92 access via Clawiter Road

**PRICE: \$1.30/SF/Month NNN**  
**\$0.33/SF/Month Estimated Expenses**

FOR LEASE

# 1961-1967 National Avenue

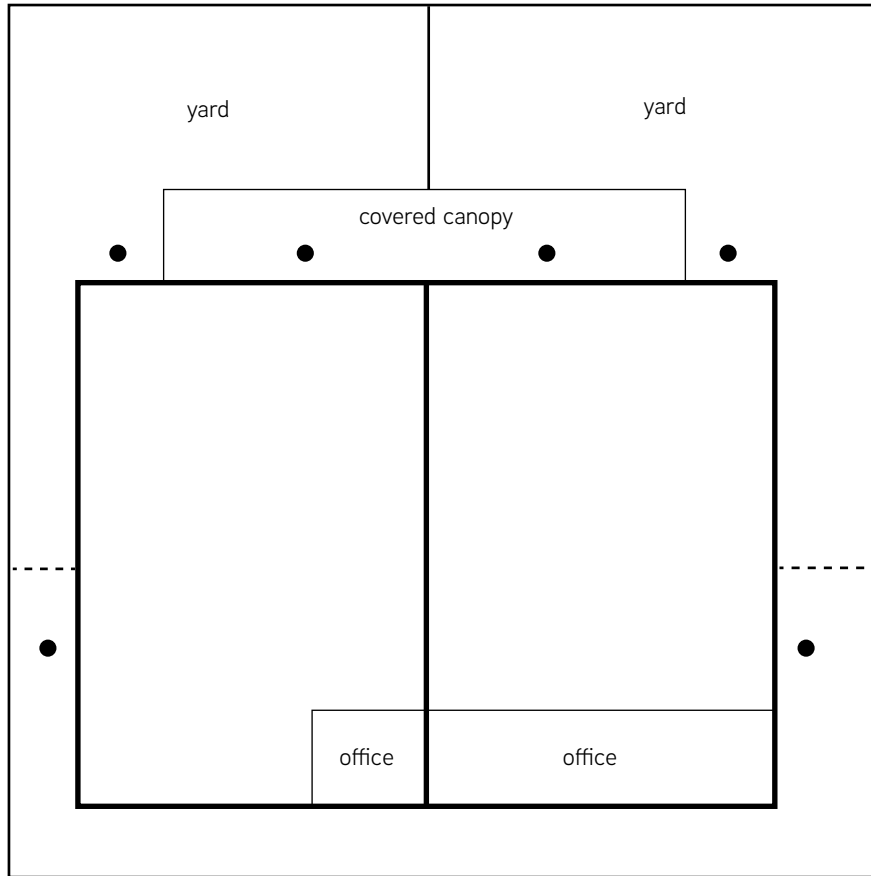
Hayward, CA 94545



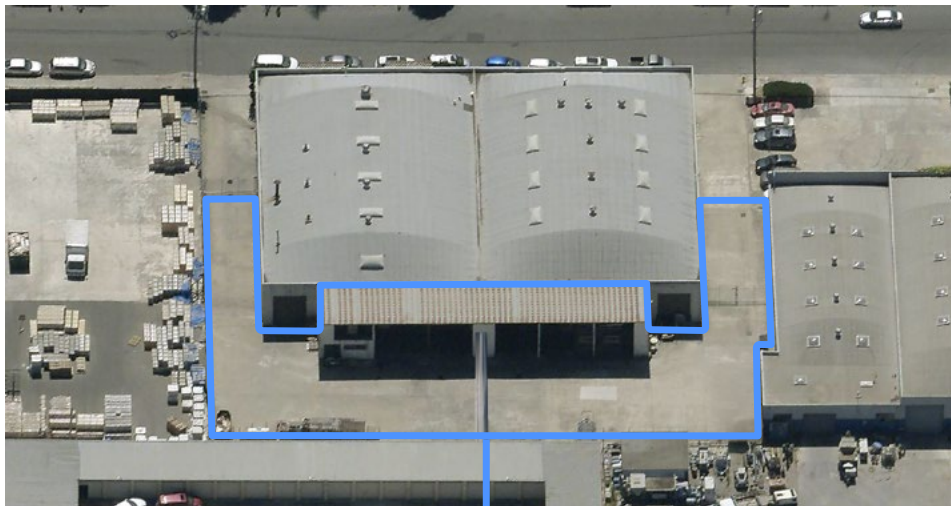
FOR LEASE

# 1961-1967 National Avenue

Hayward, CA 94545



- grade level loading door
- secured gate



Fenced and secured yard area with a covered canopy

**CONTACT US**

**Mark Maguire**  
Executive Vice President  
+1 510 219 7854  
mark.maguire@colliers.com  
CA Lic. No. 01190597

**Garrett Dunn**  
Associate  
+1 9252979449  
garrett.dunn@colliers.com  
CA Lic. No. 02229225