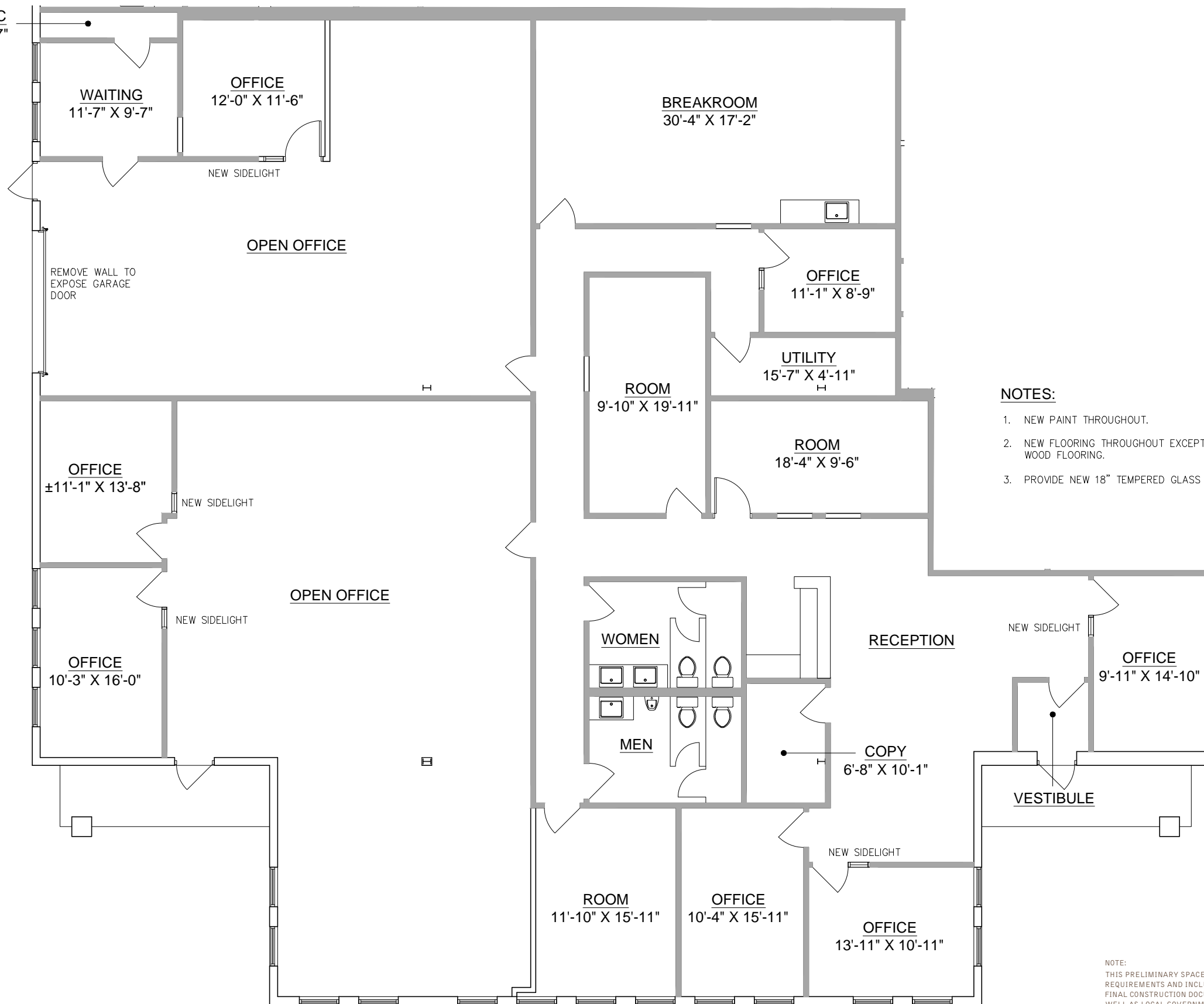
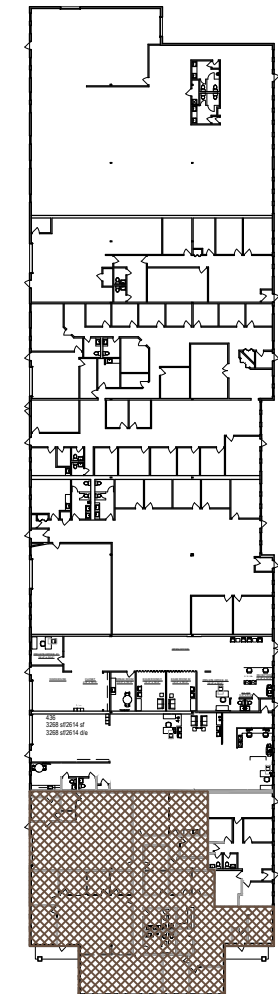


ELECTRIC
2'-2" X 9'-7"



KEY PLAN: N.T.S.



NOTES:

- 1. NEW PAINT THROUGHOUT.
- 2. NEW FLOORING THROUGHOUT EXCEPT WHERE THERE IS VINYL WOOD FLOORING.
- 3. PROVIDE NEW 18" TEMPERED GLASS SIDELIGHTS AT OFFICES.

LEGEND

- NEW PARTITION
- EXISTING PARTITION

NOTE:
THIS PRELIMINARY SPACE PLAN REPRESENTS OUR UNDERSTANDING OF THE SPACE PROGRAM REQUIREMENTS AND INCLUDES OUR INTERPRETATIONS OF LOCAL BUILDING CODE REQUIREMENTS. THE FINAL CONSTRUCTION DOCUMENTS ARE SUBJECT TO REVIEW AND COMMENTS FROM THE LANDLORD AS WELL AS LOCAL GOVERNMENTAL AGENCIES. CHANGES TO THE PLAN MAY BE REQUIRED TO ADDRESS COMMENTS AFTER REVIEW OF THE PLANS THROUGH THE PLAN CHECK PROCESS. ALL SQUARE FOOTAGES NOTED ARE PRELIMINARY AND ALSO MAY CHANGE WHEN THE SPACE PLAN IS FINALIZED.

SCALE: N.T.S.



SCHEME: 01

SUITE 430

6,492 SF

WARE MALCOMB

CHI16-6119-06
08.24.2017

SHEET
01