



 **COPPER**
CROSSING

6460 West 300 South
Salt Lake City, Utah

NOW PRE-LEASING

BUILDING 8

533,863 SQUARE FEET
STATE-OF-THE-ART LOGISTICS FACILITY



Pioneering Industrial Development in Salt Lake City

Copper Crossing spans nearly 500 acres of master-planned industrial space in Salt Lake City's North-West quadrant and Inland Port area. With over 2 million square feet of buildings occupied, it is home to leading companies in aerospace manufacturing, food processing, e-commerce, and building materials production, including UPS, Northrop Grumman, Holcim, Prinova,

Melaleuca, and Olive and Cocoa. The site offers superior logistical advantages with direct access to I-80, I-15, and rail service.

Building #8 is a crossdock industrial warehouse/office building featuring 88 dock doors and 8 grade-level doors. The space can be divisible to a minimum of 42,056 SF or serve as a

single-company space, offering ample parking and outdoor storage. Signature design elements from the Copper Crossing project will be incorporated, and the building's future visibility will be enhanced by the nearby Mountain View Corridor to the east.

Building 8 - Construction Ready

Address
6460 W. 300 S.
Salt Lake City, UT

Dock Doors
88

Glass/Windows
Large storefront glass panels and clerestory glazing on all sides of building

Building Configuration
Cross Dock

Grade Level Doors
8

Lighting
High Bay LED (specific requirements can be accommodated)

Year Built
2026

Dock Equipment
Bumpers, pit levelers

Building Size
533,863 SF
Divisible to 42,056 SF

Fire Sprinklers
ESFR

Skylights
90

Column Spacing
56' x 57'8"

Electrical Service
4000 A / 480 V / 3 Phase

Staging Bay Depth
64' Speed Bay
76' end cap bay (N & S)

Clear Height
40'

Truck Court Depth
135'

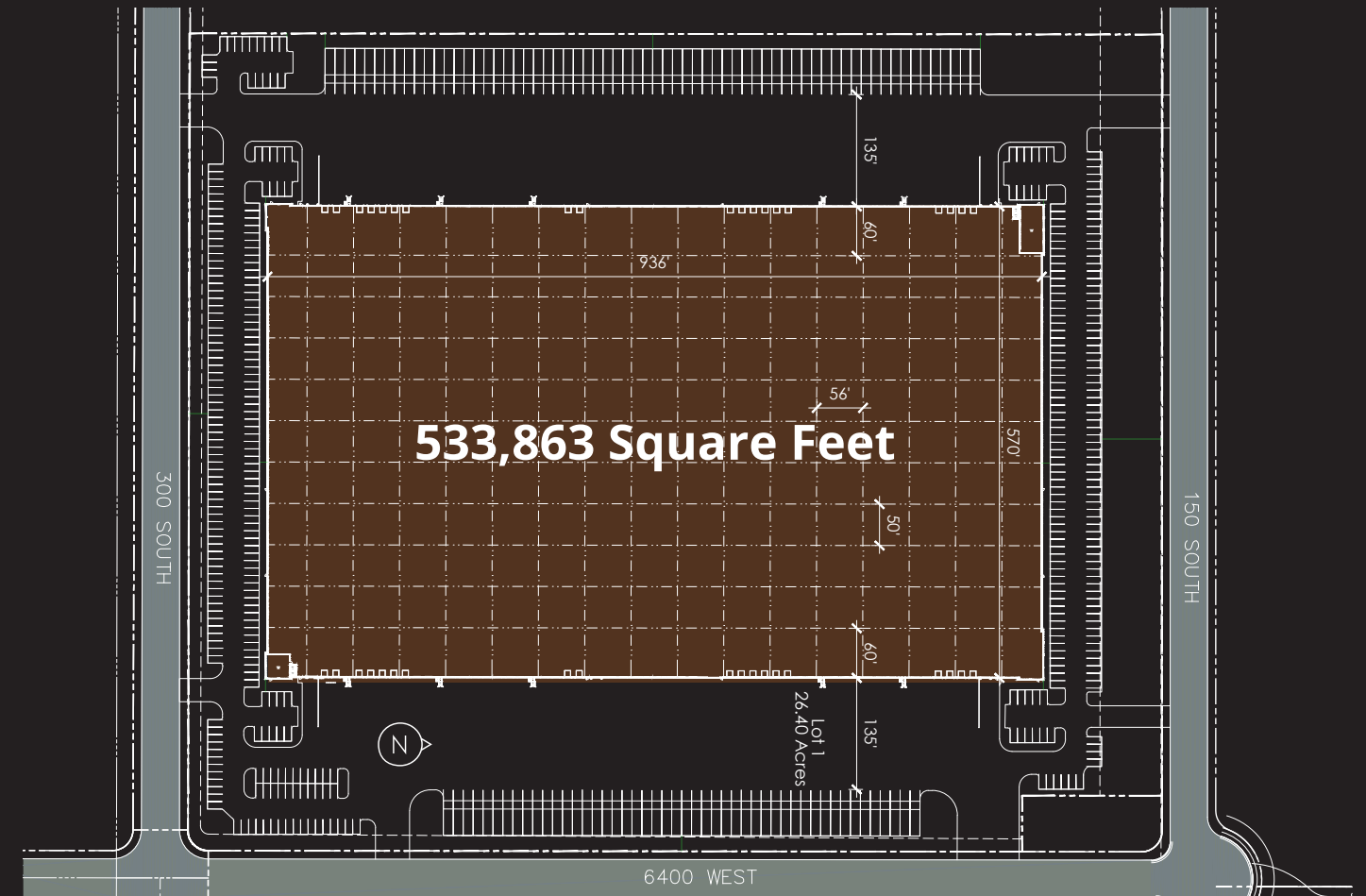
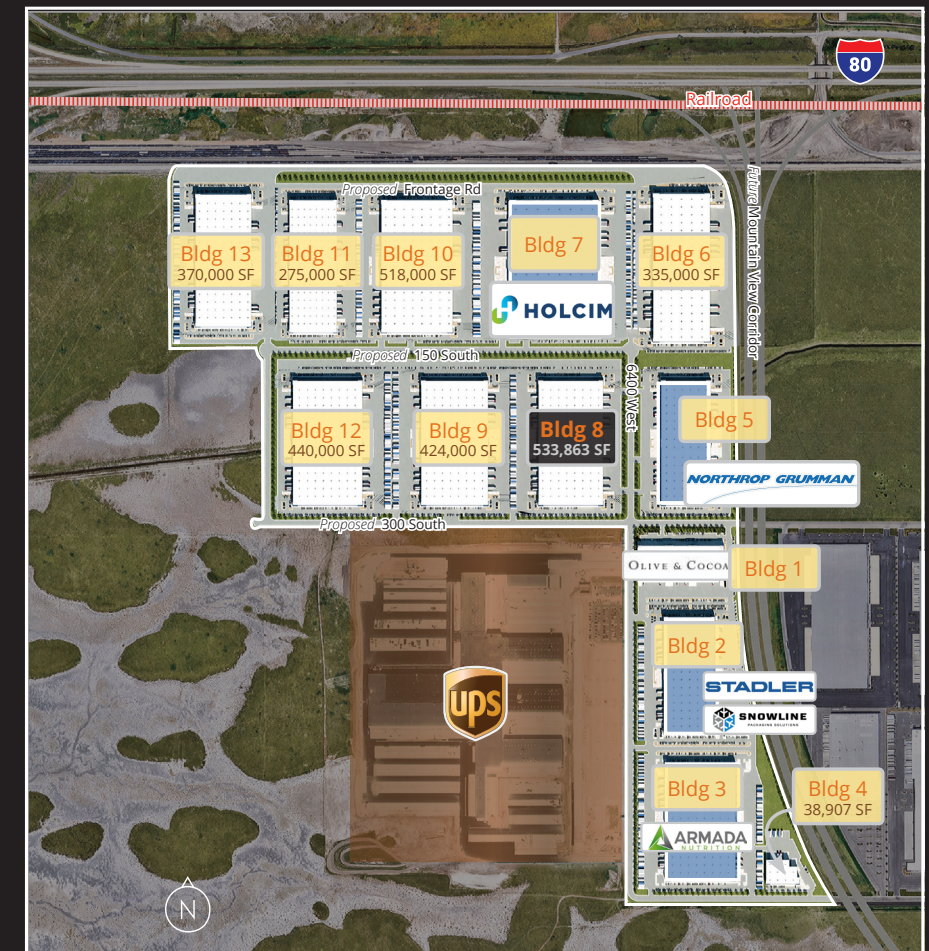
Trailer Parking
112 Stalls

Car Parking
315-330 stalls



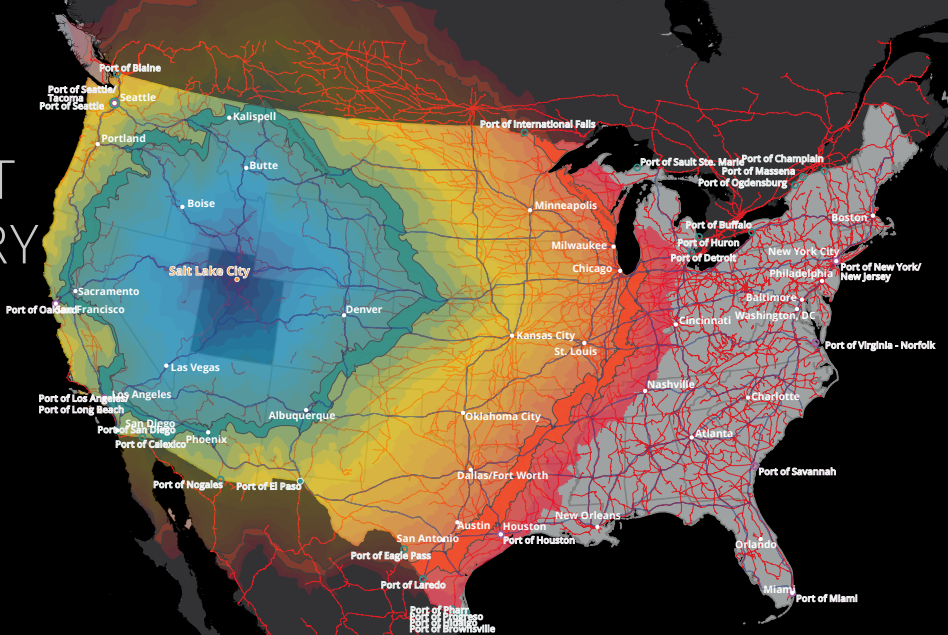
PROJECT
DETAILS

Building Eight





FREIGHT DELIVERY TIMES



TRANSPORTATION

- Interstates
- North American Rail Network

POINTS

- Major Cities
- Major Seaports
- Major Nearshore Ports

TRUCKING DRIVE BUFFERS

- 1 Hour
- 11 hours (1 trucking day)
- 22 hours (2 trucking days)
- 24 Hours



GET IN TOUCH

www.copper-crossing.com

Jeremy Jensen, SIOR, CCIM
 Executive Vice President
 +1 801 441 1207
jeremy.jensen@colliers.com

Tom Freeman, SIOR
 Vice Chair
 +1 801 947 8309
tom.freeman@colliers.com

Travis Healey, SIOR
 Vice Chair
 +1 801 947 8335
travis.healey@colliers.com

Jeremy Terry
 Vice President
 +1 801 671 9349
jeremy.terry@colliers.com



This document has been prepared by Colliers International for advertising and general information only. Colliers International makes no guarantees, representations or warranties of any kind, expressed or implied, regarding the information including, but not limited to, warranties of content, accuracy and reliability. Any interested party should undertake their own inquiries as to the accuracy of the information. Colliers International excludes unequivocally all inferred or implied terms, conditions and warranties arising out of this document and excludes all liability for loss and damages arising there from. This publication is the copyrighted property of Colliers International and/or its licensor(s). ©2024 All rights reserved.