



## Beechwood House

62 Higham Road, Chesham, HP5 2AF

### **WORKSHOP WITH OFFICES - FOR SALE**

**3,501 sq ft**  
(325.25 sq m)

- PERMITTED DEVELOPMENT OPPORTUNITY
- 2 WORKSHOP/STORAGE UNITS ON GROUND FLOOR
- 4 OFFICE SUITES ON FIRST FLOOR
- CURRENTLY VACANT

# Beechwood House, 62 Higham Road, Chesham, HP5 2AF

## Summary

<b>Available Size</b>	3,501 sq ft
<b>Price</b>	£540,000
<b>VAT</b>	Not applicable
<b>Legal Fees</b>	Each party to bear their own costs
<b>EPC Rating</b>	E (111)

## Description

Beechwood house comprises a brick built two storey building with an external staircase to access the first floor. If removed, one car parking space could be available to the front. Internally there are two workshop/storage units on the ground floor with single glazed windows, WC, kitchenette and strip lights. On the first floor are 4 office suites with a WC.

Permitted development opportunity for residential conversion.

## Location

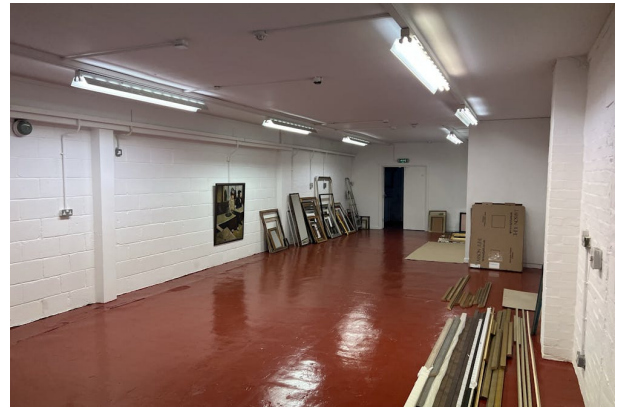
The property is located on Higham Road, close to Chesham town centre. Chesham is strategically located to the north west of London, within close proximity to the regional centres of Watford, Hemel Hempstead and High Wycombe. The area benefits from excellent communications, provided by the M25, M1 and M40 motorways. In addition there is an excellent link to Central London via the Metropolitan Line and the Chiltern Railway Line.

## Terms

Vacant possession on completion.

## Money Laundering / Identity Checks

Money Laundering and Identity checks will be carried out on all Purchasers and proof of identity documents will be required.



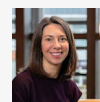
## Viewing & Further Information



**Neave DaSilva**

01494 796054 | 07827 908926

nds@chandlergarvey.com

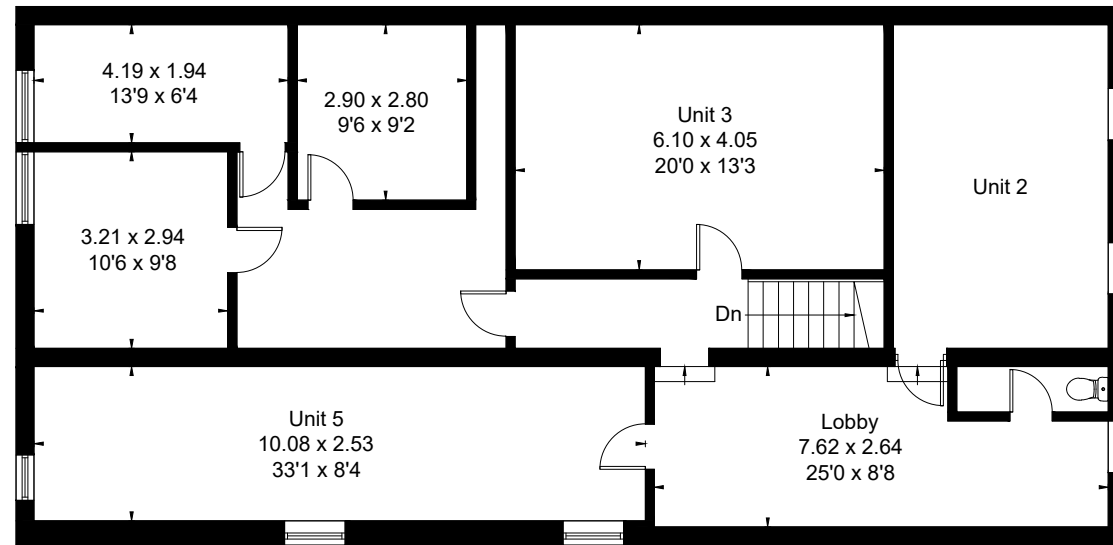
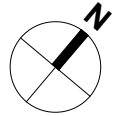


**Joanna Kearvell**

07887 793030

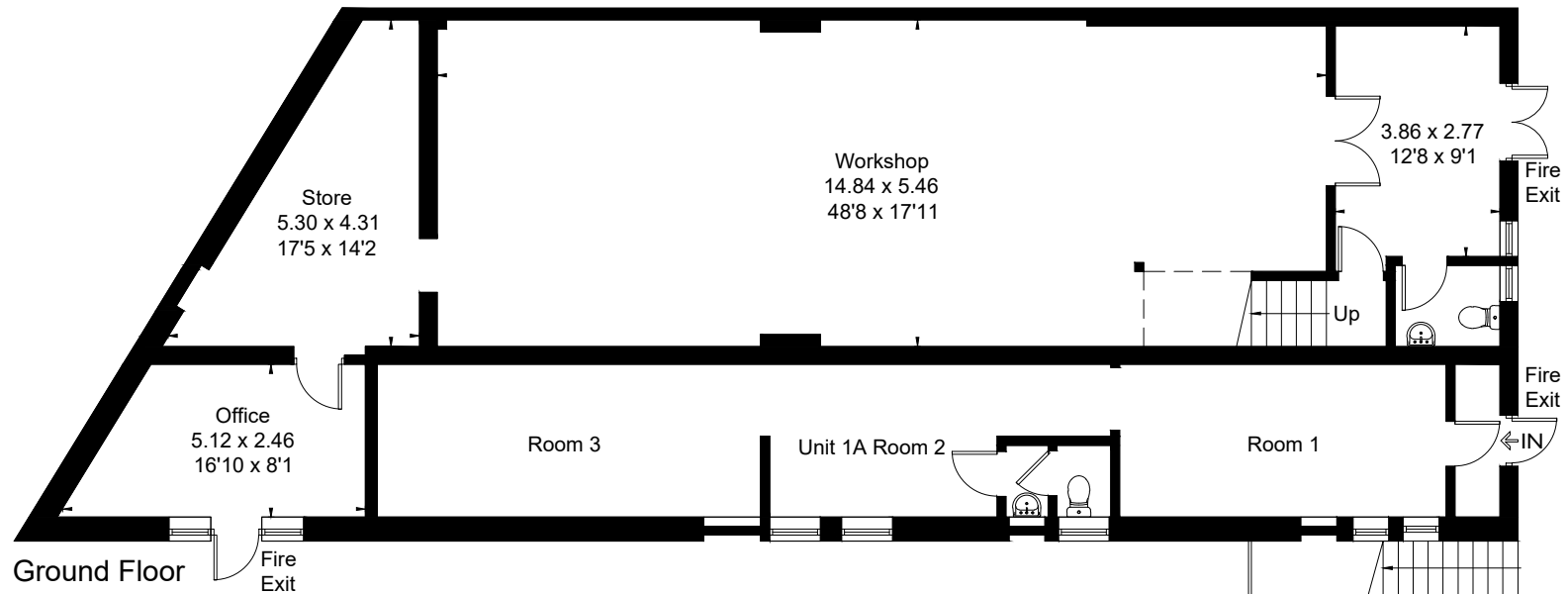
jk@chandlergarvey.com

Approximate Area = 325.3 sq m / 3501 sq ft  
Including Limited Use Area (2.2 sq m / 24 sq ft)



= Reduced head height below 1.5m

First Floor



Ground Floor