

**\$2.50 PSF/YR  
COMMISSION**

[Click For  
Virtual Tour](#)

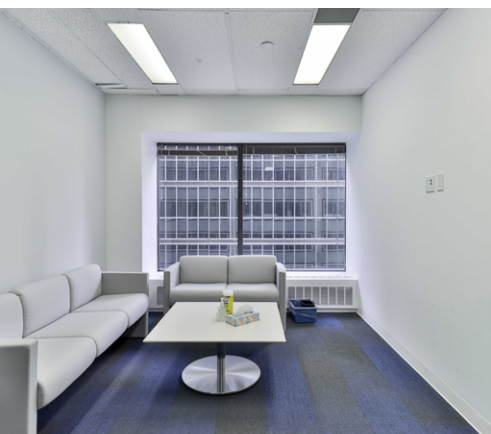
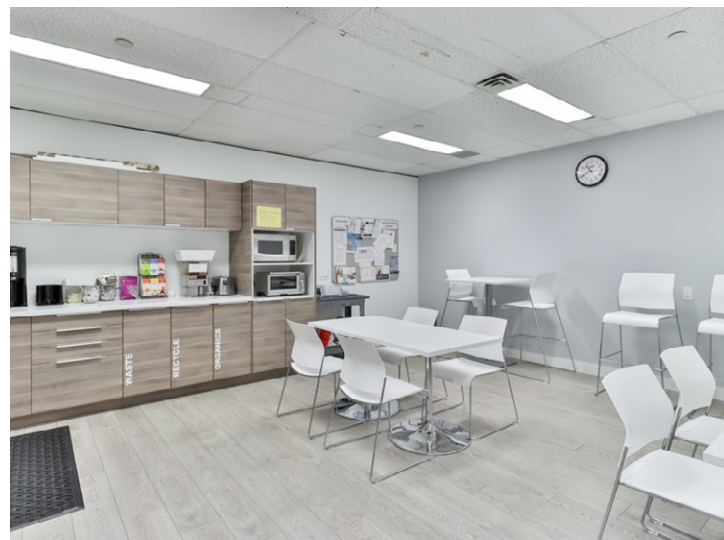
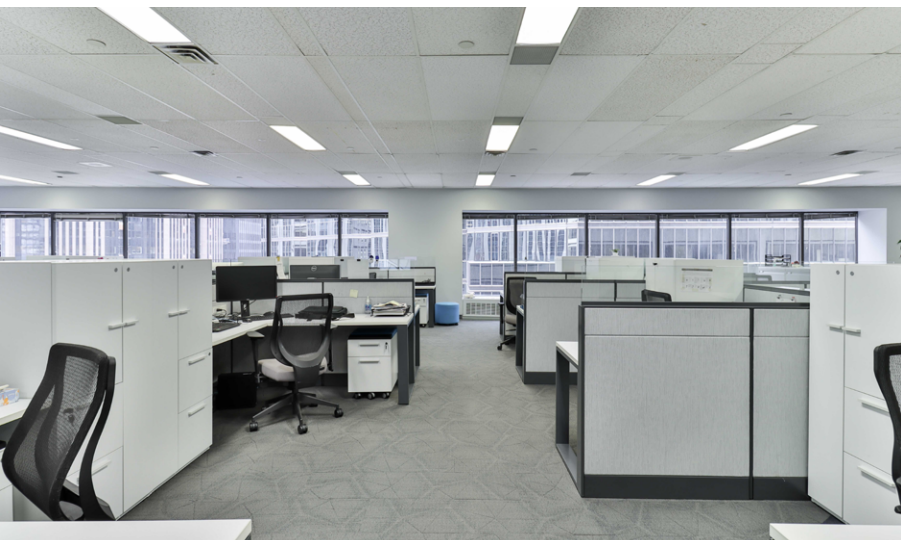
**Motivated Sublandlord**

**For Sublease: Office**

# 155 University Avenue

Full Floor Opportunity in the Financial Core  
10,394 SF of Built out Office Space

**Lennard:**



# 155 University Avenue

Available Space Suite 600

Size Approximately 10,394 SF

Term August 30, 2026

Availability In 30 Days

Net Rate Call Listing Team to Discuss

Additional Rent \$27.74 PSF (2025 est.)

Commission \$2.50 PSF/ annum to the Cooperating Broker

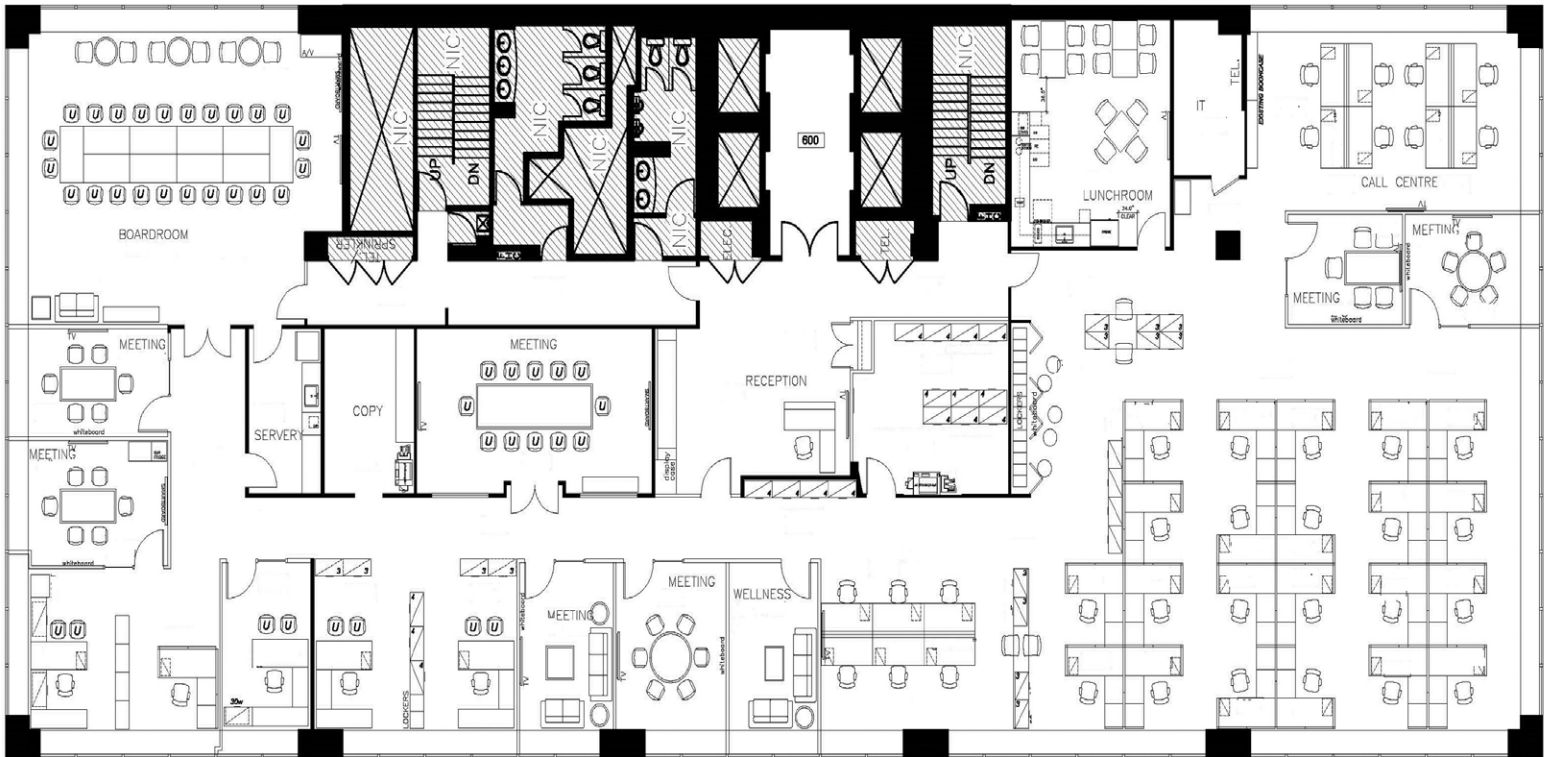
## Property Highlights

- Furnished, wired and ready for tenant occupancy
- Full floor opportunity with abundance of natural light
- High-end, new buildout including large boardrooms/ training rooms, 8 offices/ meeting rooms, large lunchroom with seating, kitchenette, copy room, IT room, storage, lockers, and ~41 workstations
- Steps to PATH & St. Andrew Subway Station
- 7-minute walk to Union Station



# 155 University Avenue

## Suite 600 Floor Plan

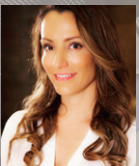


# 155 University Avenue

Suite 600 : 10,394 SF



Tina Stacey\*, Vice President  
416.915.5268  
[tstacey@lennard.com](mailto:tstacey@lennard.com)



Cathy Strati\*, Executive Vice President  
416.649.5935  
[cstrati@lennard.com](mailto:cstrati@lennard.com)

**Lennard:**

200-55 University Avenue, Toronto  
416.649.5920  
[lennard.com](http://lennard.com)

\*Sales Representative

Statements and information contained are based on the information furnished by principals and sources which we deem reliable but for which we can assume no responsibility. Lennard Commercial Realty, Brokerage.