



# CLAY HEMPSTEAD

## BUSINESS PARK

8700 CLAY ROAD | HOUSTON, TX 77080

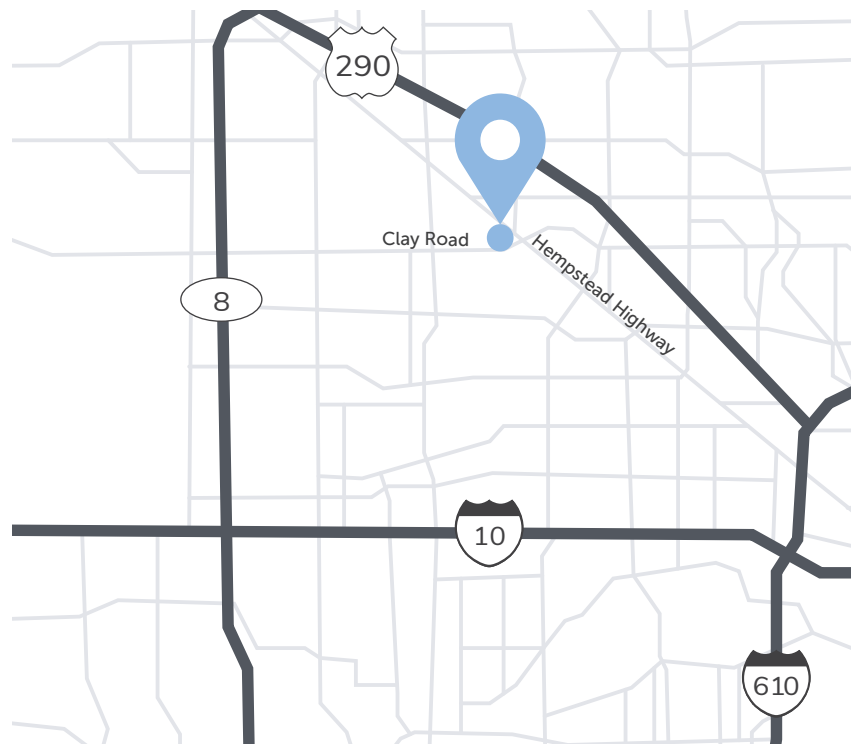


### PROPERTY HIGHLIGHTS

- 4 buildings
- 286,985 SF total (12.19 acres)
- Multiple loading configurations
- Built in 1980
- 16' - 22' clear height
- Frontage on Clay and Hempstead
- Infill NW Houston location
- Access to Beltway 8 and Highway 290
- Security lighting

### SUITE 215 HIGHLIGHTS

- 16,071 SF available
  - 2,013 SF office
  - 14,058 SF warehouse
- 22' clear height
- 3 dock-high doors
- 1 ramp
- Fully sprinklered



### FOR LEASING INFORMATION, CONTACT:

**BRANDON PREECE**  
713.412.1530  
brandon.preece@streamrealty.com

**JACK RATHE**  
713.300.0298  
jack.rathe@streamrealty.com



**ENTRADA**  
PARTNERS

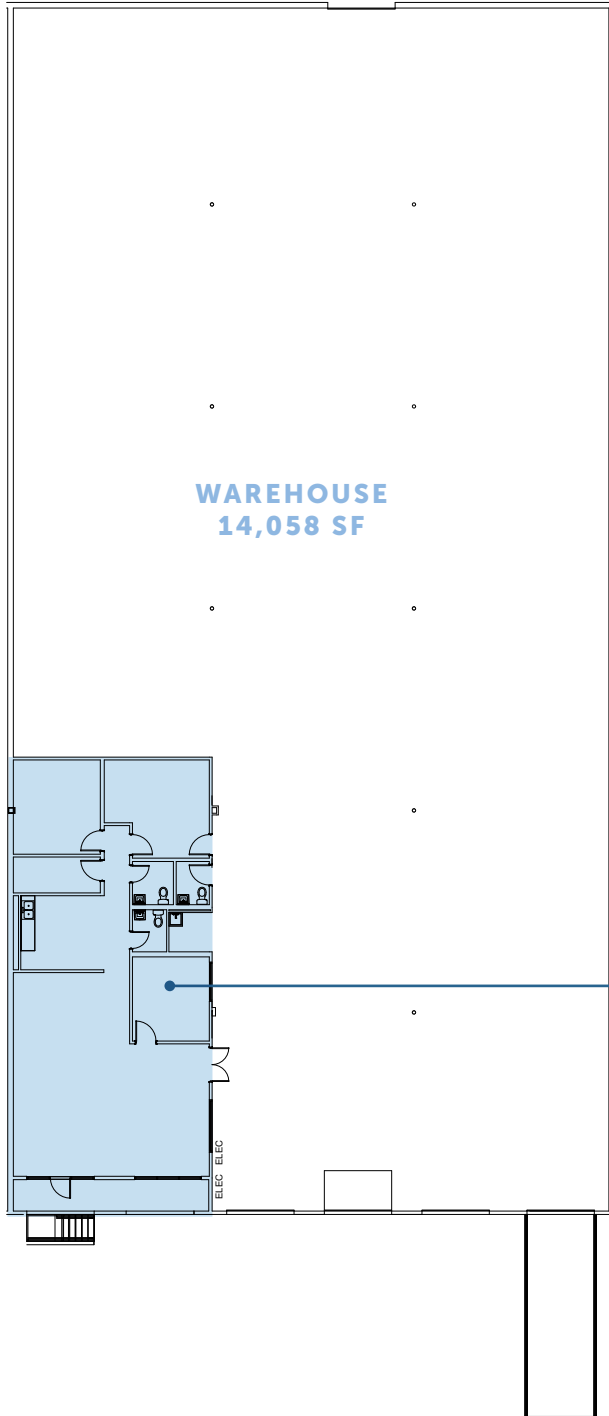


# CLAY HEMPSTEAD

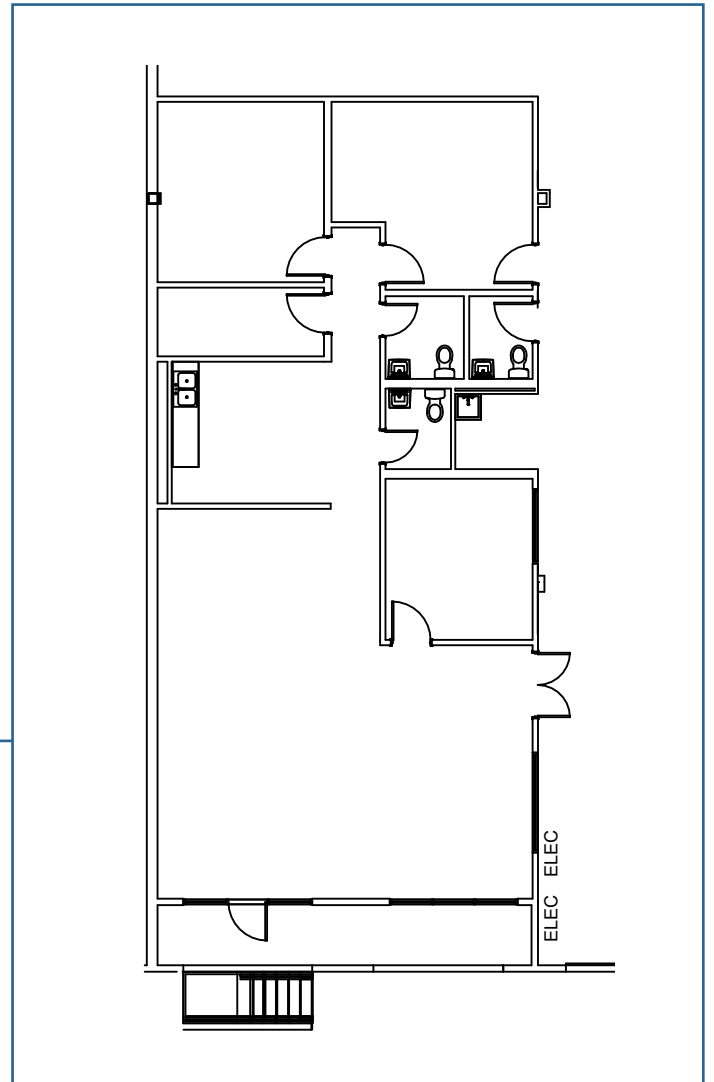
BUSINESS PARK

8700 CLAY ROAD | HOUSTON, TX 77080

## SUITE 215 | FLOOR PLAN



## OFFICE | 2,013 SF



FOR LEASING INFORMATION, CONTACT:

BRANDON PREECE

713.412.1530

brandon.preece@streamrealty.com

JACK RATHE

713.300.0298

jack.rathe@streamrealty.com

STREAM®



ENTRADA  
PARTNERS



# CLAY HEMPSTEAD

BUSINESS PARK

8700 CLAY ROAD | HOUSTON, TX 77080



FOR LEASING INFORMATION, CONTACT:

**BRANDON PREECE**

713.412.1530

[brandon.preece@streamrealty.com](mailto:brandon.preece@streamrealty.com)

**JACK RATHE**

713.300.0298

[jack.rathe@streamrealty.com](mailto:jack.rathe@streamrealty.com)

**STREAM**



**ENTRADA**  
PARTNERS