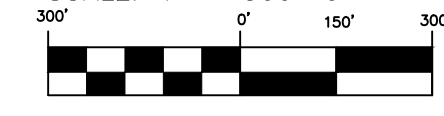
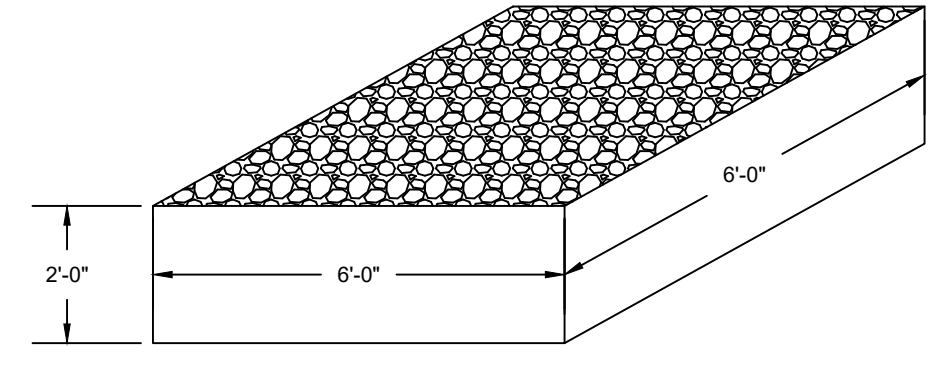


PRELIMINARY SITE PLAN
SCALE: 1" = 300'-0"

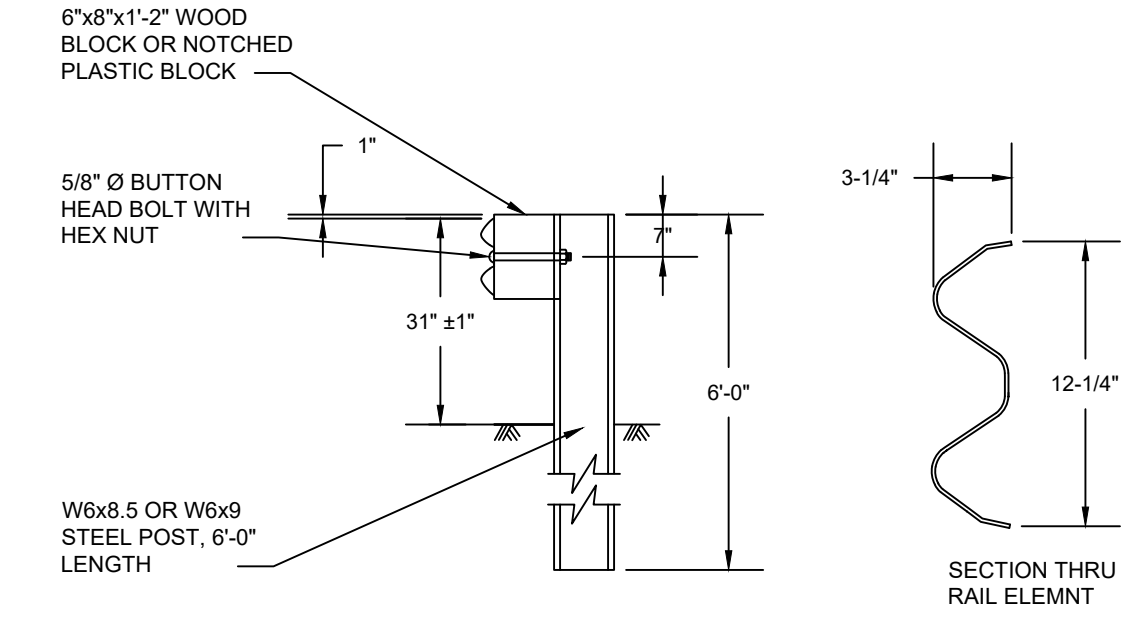


- NOTES:
1. BASED ON SCALED DRAWINGS AREAS AND DIMENSIONS ARE APPROXIMATE.
 2. DEVELOPMENT WILL CONNECT TO KERN COUNTY WATER.
 3. DEVELOPMENT WILL HAVE A SEPTIC TANK.
 4. SURFACE MATERIAL FOR STORAGE AREAS: 4" LAYER OF MILLED ASPHALT OVER 11" LAYER OF ROCK.
 5. SURFACE MATERIAL FOR TRAVEL PATHS: 4" LAYER OF MILLED ASPHALT OVER 11" LAYER OF ROCK.
 6. ELECTRICITY WILL BE PROVIDED BY SOUTHERN CALIFORNIA EDISON.
 7. DATA WILL BE PROVIDED BY AT&T.

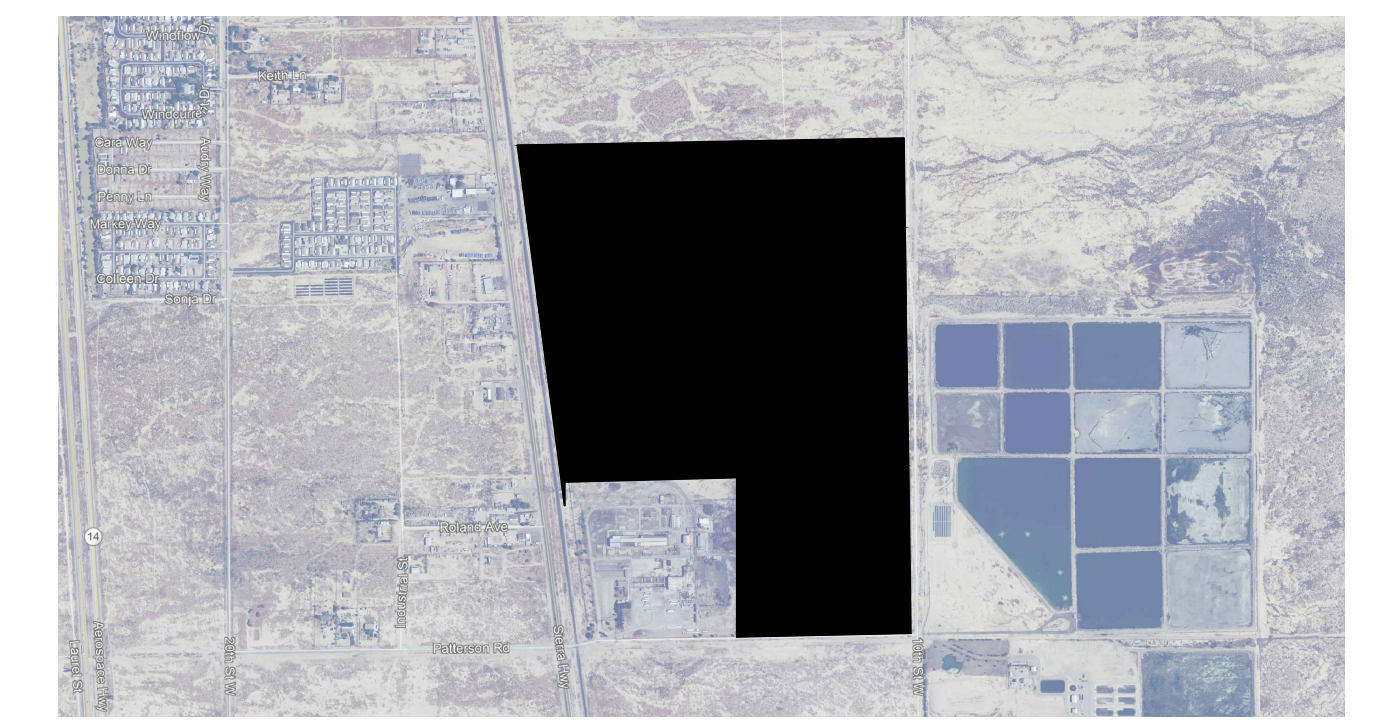
- LINE DENOTES GAS LINE, TYP.
- TRUCK ENTRANCE
- 65' X 125' BUILDING
- 9' X 20' PARKING SPACE, TYP.
- 75' X 11' TRUCK PARKING
- 20' EASEMENT FOR SOUTHERN CALIFORNIA GAS COMPANY
- 10' EASEMENT FOR SOUTHERN CALIFORNIA EDISON COMPANY
- TRUCK EXIT



TYPICAL WATER DRAINING STRUCTURE
SCALE: N.T.S.

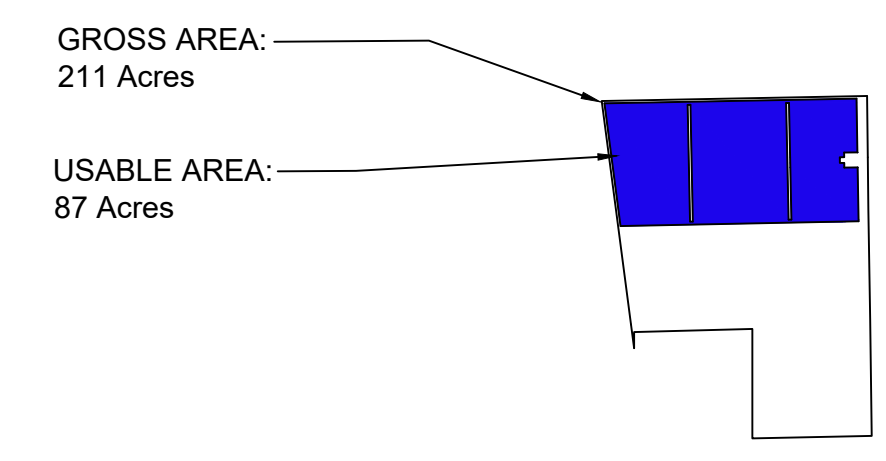


HIGHWAY GUARDRAIL DETAIL
SCALE: N.T.S.

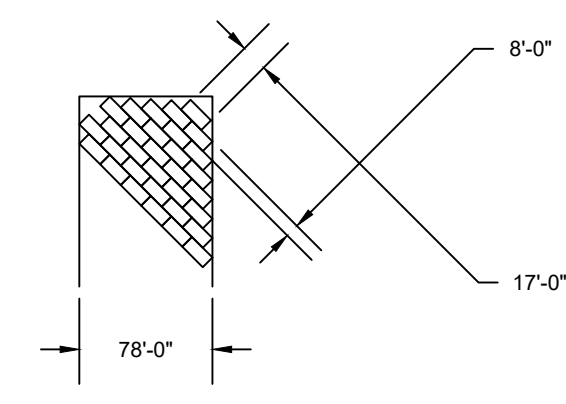


LOCATION MAP
SCALE: 1" = N.T.S.

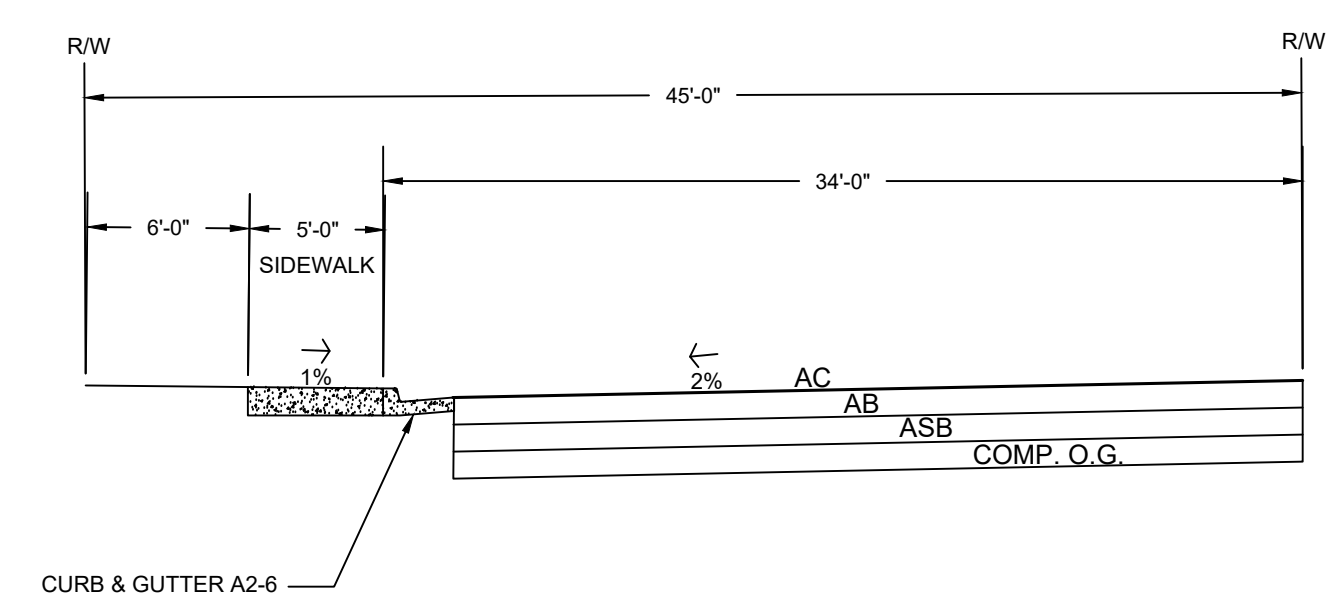
ZONING INFORMATION		
JURISDICTION: Kern County, CA LOT AREA: 9,221,789 sf 211.70 acres		
ZONING: M-3 (Heavy Industrial)		
PARCELS: 473-040-06, 473-023-04, 473-023-05, 473-023-06, AND 473-023-16		
CATEGORIES	REQUIRED / ALLOWED	PROVIDED
LOT OCCUPATION		
USABLE AREA 1	-	3,790,235 sf (41.10%)
	-	
LANDSCAPE		
OPEN SPACE	481,089 sf (5.00% min.)	495,145 sf (5.37%)
IMPERVIOUS AREA	-	3,790,235 sf (41.10%)
SET BACKS		
FRONT	0'-0"	0'-0"
INTERIOR SIDE	0'-0"	0'-0"
SIDE STREET	n/a	n/a
REAR	0'-0"	0'-0"
HEIGHT		
BUILDING	150'-0" (13 stories)	1 story
AREAS		
BUILDING		9,750 sf
PARKING		
BUILDING (OFFICES)		
TOTAL		



SITE DIAGRAM
SCALE: N.T.S.



TYPICAL PARKING STORAGE LAYOUT
SCALE: N.T.S.



HALF-WIDTH TYPE "A" COLLECTOR HIGHWAY SECTION
SCALE: N.T.S.