

Homestead Plaza

205 - 255 CENTER ST., SEVILLE, OH 44273

FOR LEASE

Retail Property



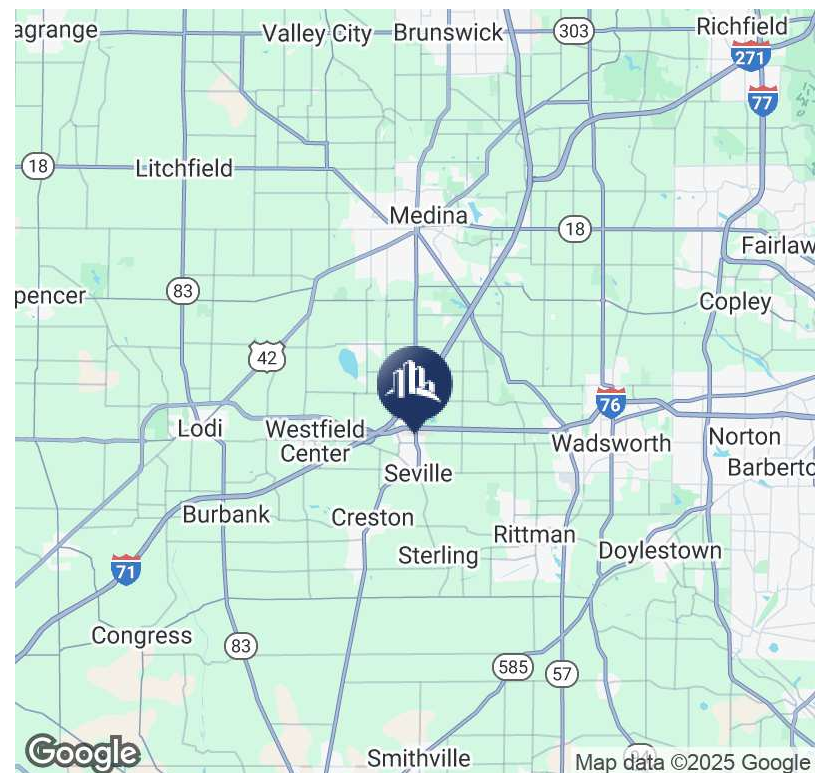
PROPERTY DESCRIPTION

One retail spaces left for lease located in highly visible Homestead Plaza. Suite 255 is 3000 SF and includes reception area, large bull pen, open space, 4 private offices, kitchenette, storage and two restrooms. Property fronts busy Center St./SR 3.

LOCATION DESCRIPTION

1 mile East of I-71 and 1/2 mile South of the I-76/SR-3 interchange in the Village of Seville. Good visible corner location near traffic light with easy access to Akron, Columbus, Cleveland, Canton, Medina and two major airports. Good residential density nearby.

SPACES	LEASE RATE	SPACE SIZE
255	\$12.00 SF/yr	3,000 SF



Valeria Long

216.293.8900 x4
valeria.long@sperrycga.com
OH #SAL.2022003074

Steve Masica

PRINCIPAL
330.714.4415
steve.masica@sperrycga.com
OH #2013002150

Michelle Masica

PRINCIPAL/BROKER
216.293.8900 x1
michelle.masica@sperrycga.com
OH #2019006823

Each office independently owned and operated.

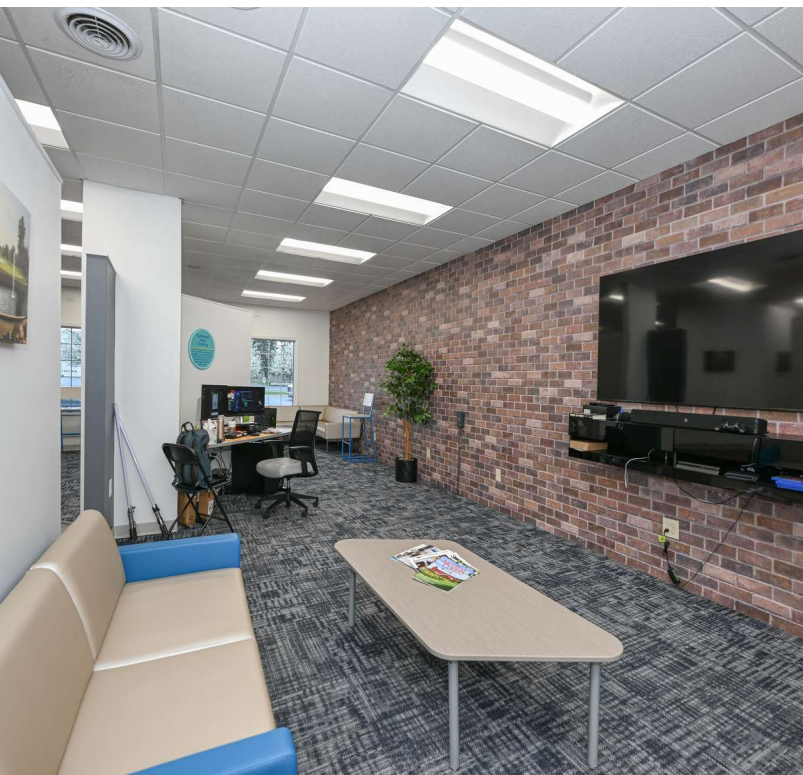
We obtained the information above from sources we believe to be reliable. However, we have not verified its accuracy and make no guarantee, warranty or representation about it. It is submitted subject to the possibility of errors, omissions, change of price, rental or other conditions, prior sale, lease or financing, or withdrawal without notice. We include projections, opinions, assumptions or estimates for example only, and they may not represent current or future performance of the property. You and your tax and legal advisors should conduct your own investigation of the property and transaction.

Homestead Plaza

205 - 255 CENTER ST., SEVILLE, OH 44273

FOR LEASE

Retail Property



Valeria Long

216.293.8900 x4
valeria.long@sperrycga.com
OH #SAL.2022003074

Steve Masica

PRINCIPAL
330.714.4415
steve.masica@sperrycga.com
OH #2013002150

Michelle Masica

PRINCIPAL/BROKER
216.293.8900 x1
michelle.masica@sperrycga.com
OH #2019006823

Each office independently owned and operated.

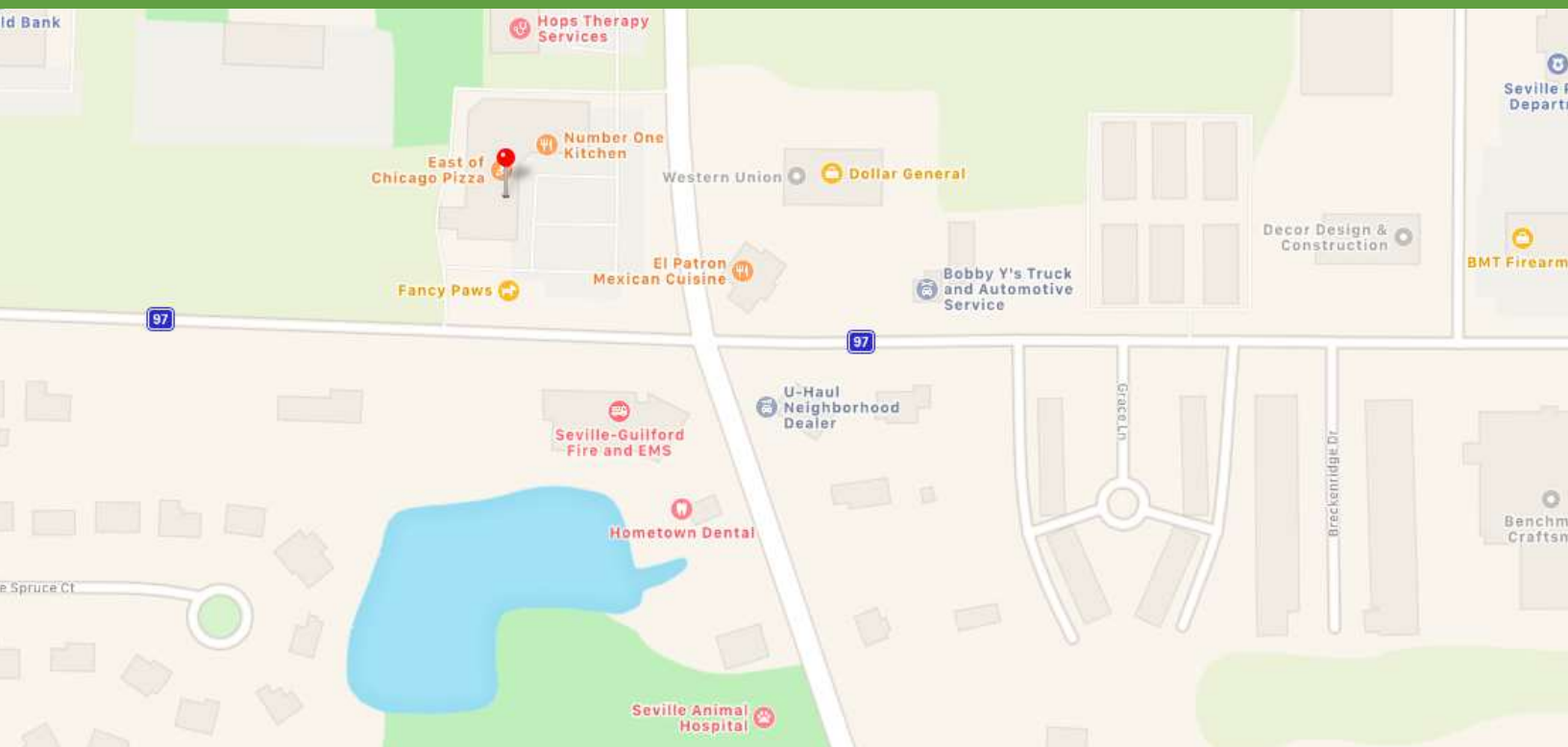
We obtained the information above from sources we believe to be reliable. However, we have not verified its accuracy and make no guarantee, warranty or representation about it. It is submitted subject to the possibility of errors, omissions, change of price, rental or other conditions, prior sale, lease or financing, or withdrawal without notice. We include projections, opinions, assumptions or estimates for example only, and they may not represent current or future performance of the property. You and your tax and legal advisors should conduct your own investigation of the property and transaction.

Homestead Plaza

205 - 255 CENTER ST., SEVILLE, OH 44273

FOR LEASE

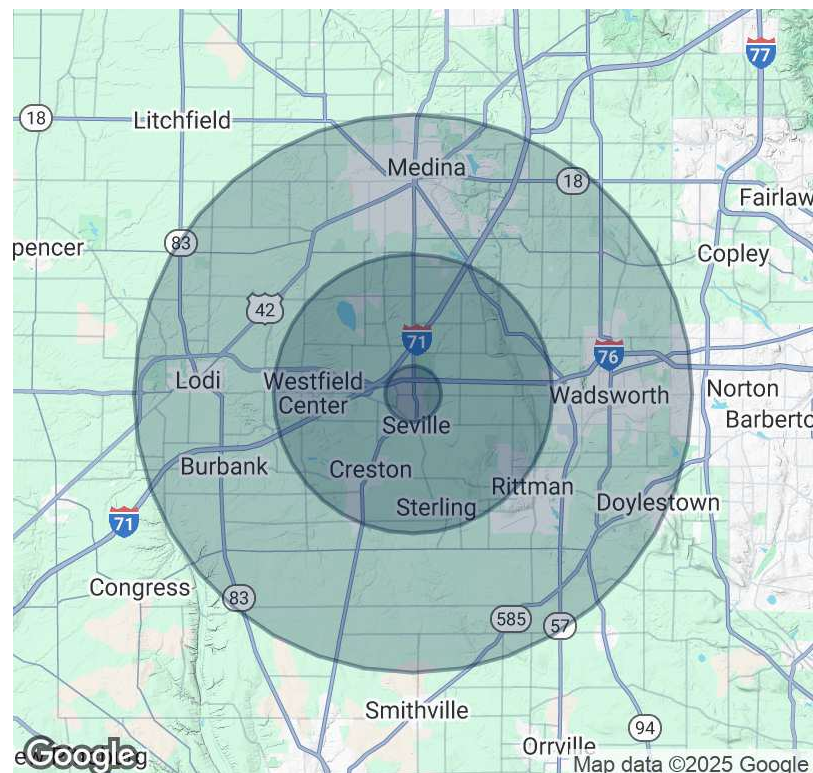
Retail Property



POPULATION	1 MILE	5 MILES	10 MILES
Total Population	681	16,837	120,888
Average age	42.6	41.7	39.1
Average age (Male)	41.3	41.5	38.0
Average age (Female)	43.2	41.8	40.1

HOUSEHOLDS & INCOME	1 MILE	5 MILES	10 MILES
Total households	262	6,306	45,723
# of persons per HH	2.6	2.7	2.6
Average HH income	\$67,010	\$78,003	\$76,009
Average house value	\$188,667	\$213,205	\$209,333

* Demographic data derived from 2020 ACS - US Census



Valeria Long

216.293.8900 x4
 valeria.long@sperrycga.com
 OH #SAL.2022003074

Steve Masica

PRINCIPAL
 330.714.4415
 steve.masica@sperrycga.com
 OH #2013002150

Michelle Masica

PRINCIPAL/BROKER
 216.293.8900 x1
 michelle.masica@sperrycga.com
 OH #2019006823

Each office independently owned and operated.

We obtained the information above from sources we believe to be reliable. However, we have not verified its accuracy and make no guarantee, warranty or representation about it. It is submitted subject to the possibility of errors, omissions, change of price, rental or other conditions, prior sale, lease or financing, or withdrawal without notice. We include projections, opinions, assumptions or estimates for example only, and they may not represent current or future performance of the property. You and your tax and legal advisors should conduct your own investigation of the property and transaction.