



Colliers



310 East 4500 South
Murray, Utah 84107

For Lease

\$21.50 SF, Full Service

Derek Sawaya

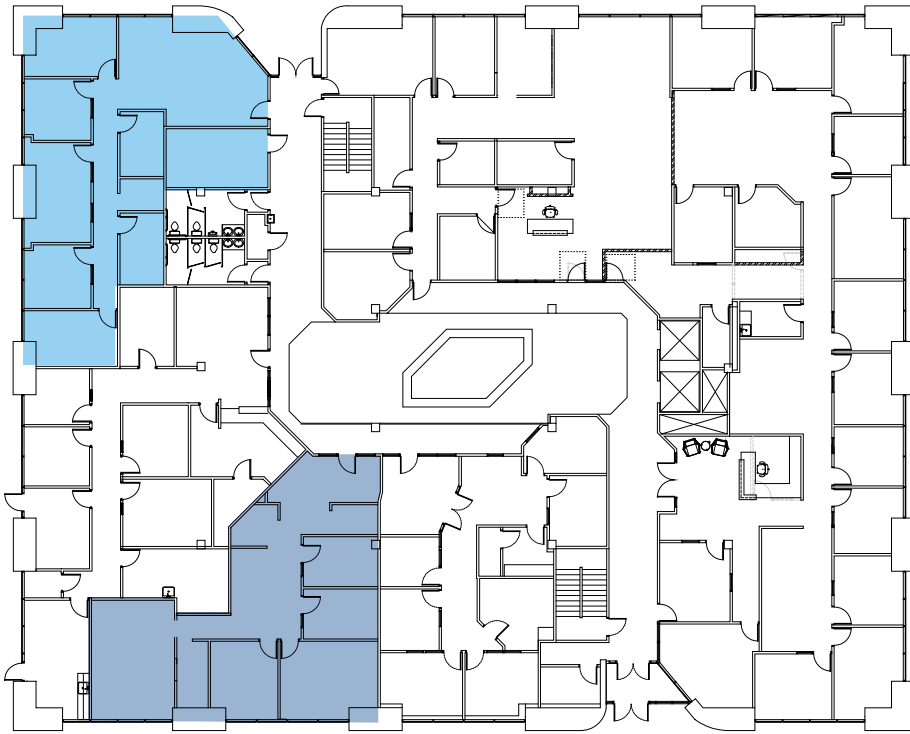
Associate Vice President
+1 801 947 8341
derek.sawaya@colliers.com

Property Information

- \$1 million in building upgrades recently completed
- Three minutes to I-15 freeway
- 20 minutes from anywhere in Salt Lake County
- Fiber available through Utopia, CenturyLink, Integra
- 4/1,000 free on-site parking
- Panoramic mountain views

Floor Plans

1st Floor

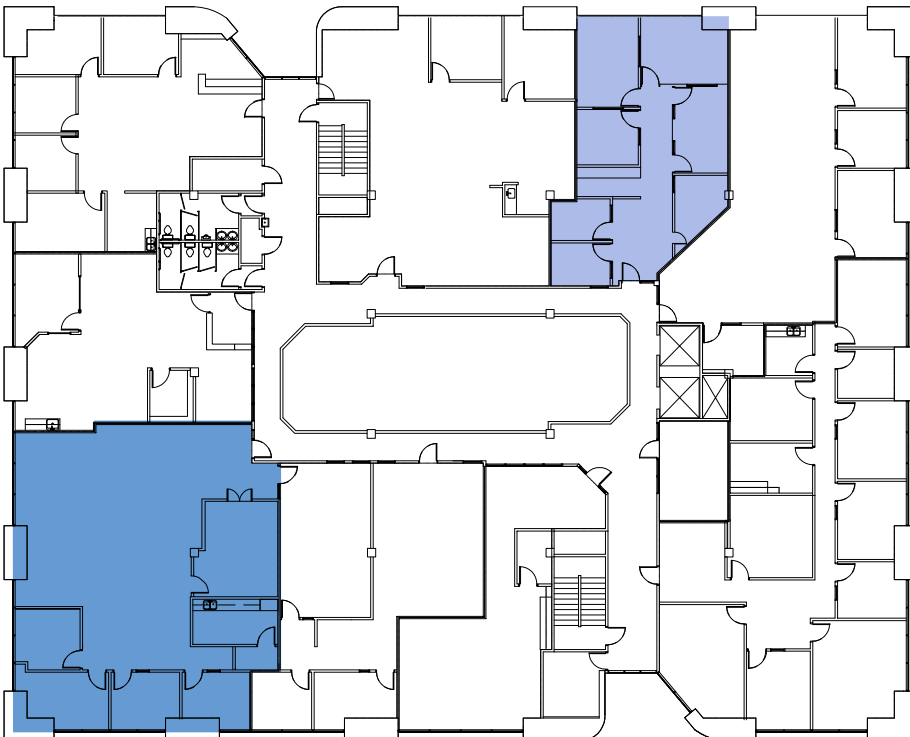


 Suite 108 - 2,139 RSF

 Suite 150 - 2,907 RSF



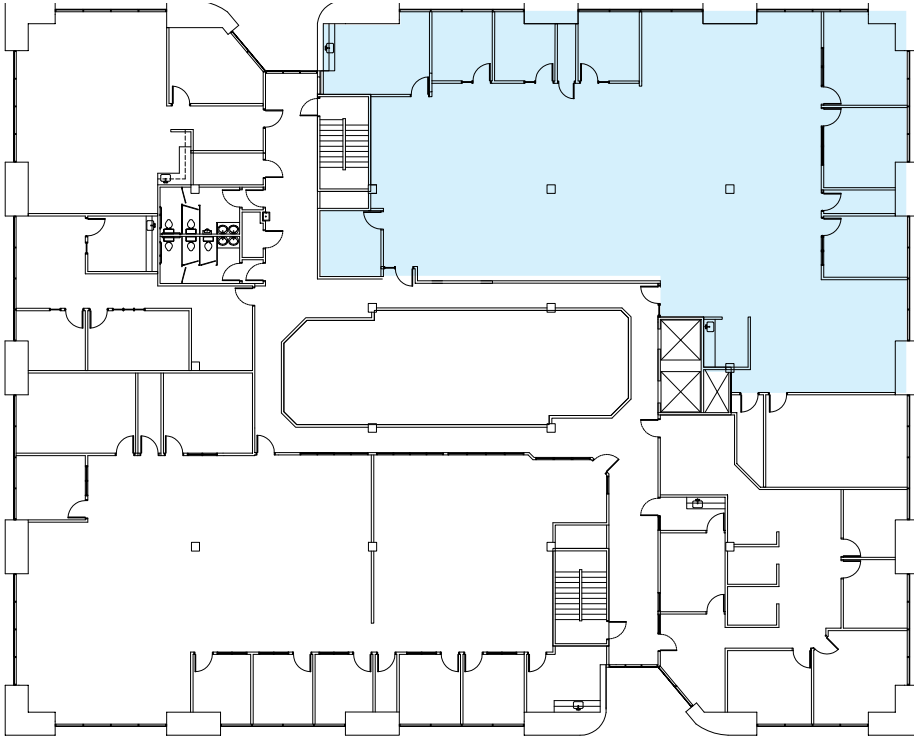
2nd Floor



 Suite 200 - 2,907 RSF

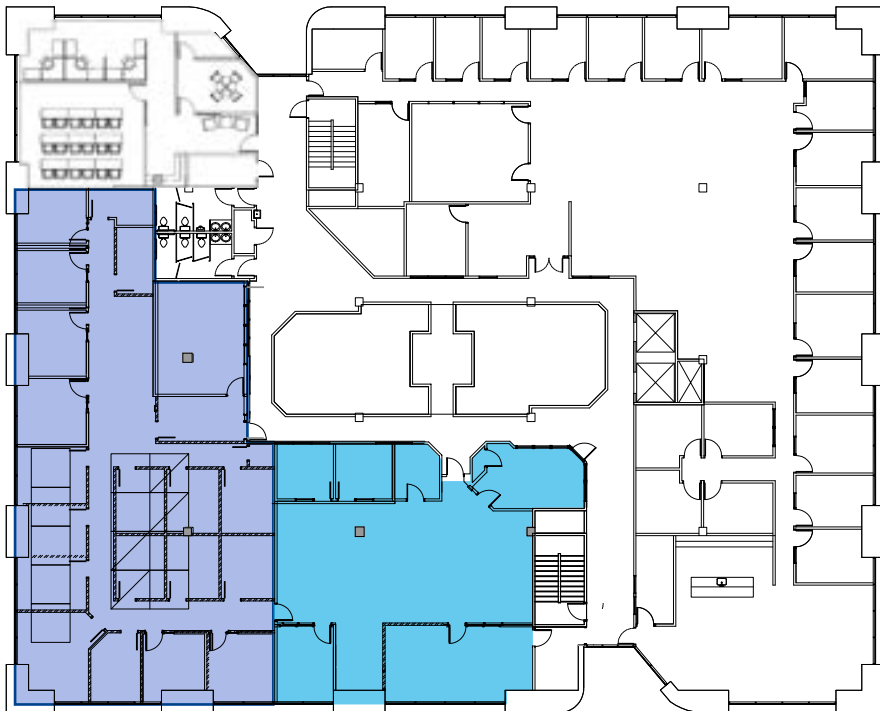
 Suite 230 - 1,474 RSF

Floor Plans



3rd Floor

 Suite 300 - 6,775 RSF

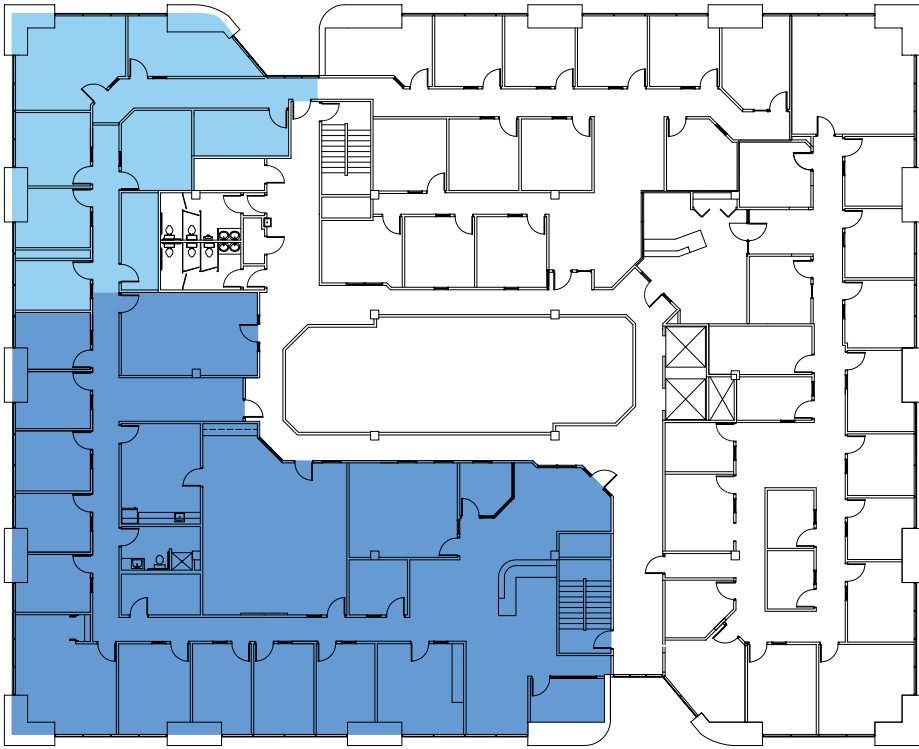


4th Floor



 Suite 405 - 2,852 RSF

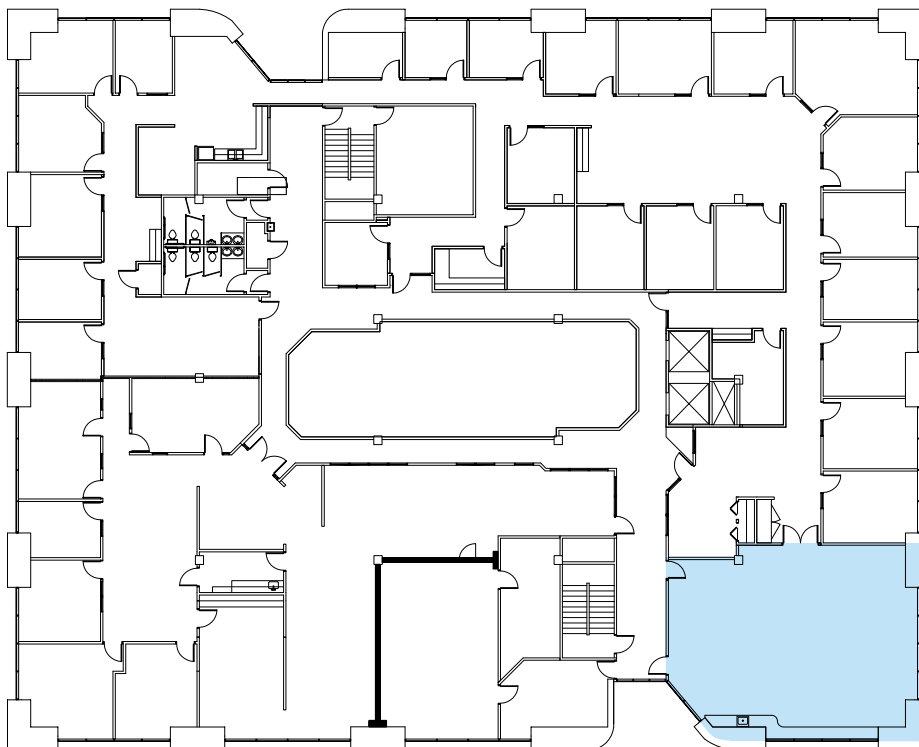
 Suite 410 - 4,663 RSF

Floor Plans



5th Floor

-  Suite 500 - 7,297 RSF
-  Suite 560 - 2,241 RSF



6th Floor

-  Suite 610 - 1,685 RSF

310 E 4500 S | For Lease



Remodeled Common Area



Typical Turn Key Build Out



Recent Tenant Build Out



Recent Tenant Build Out





Colliers
111 S. Main St., Suite 2200
Salt Lake City, UT 84111
Main: +1 801 947 8300
colliers.com

Derek Sawaya
Associate Vice President
+1 801 947 8341
derek.sawaya@colliers.com

This document has been prepared by Colliers International for advertising and general information only. Colliers International makes no guarantees, representations or warranties of any kind, expressed or implied, regarding the information including, but not limited to, warranties of content, accuracy and reliability. Any interested party should undertake their own inquiries as to the accuracy of the information. Colliers International excludes unequivocally all inferred or implied terms, conditions and warranties arising out of this document and excludes all liability for loss and damages arising there from. This publication is the copyrighted property of Colliers International and/or its licensor(s). ©2024. All rights reserved.