

# THE CUBES AT LOCUST GROVE

Building A  
700 Price Drive  
Locust Grove, GA 30248



## Space Highlights

- Existing Main Office and Shipping Offices Fully Built Out
- 146 Dock Doors: 90 with Seals and Mechanical Levelers
- 4 Drive-Ins

AVAILABLE  
NOW

**500,000-1,000,993 SF**  
FOR SUBLEASE

*For more information:*

**Bert Sanders**

*Vice Chairman*

t 404-926-1104

[Bert.Sanders@nmrk.com](mailto:Bert.Sanders@nmrk.com)

**Blake Maum**

*Associate*

t 404-806-2412

[Blake.Maum@nmrk.com](mailto:Blake.Maum@nmrk.com)

**Emery Cresswell**

*Associate Director*

t 770-552-2493

[Emery.Cresswell@nmrk.com](mailto:Emery.Cresswell@nmrk.com)

**Preston Sanders**

*Associate*

t 770-552-2472

[Preston.Sanders@nmrk.com](mailto:Preston.Sanders@nmrk.com)

**Daniel Duarte**

*Managing Director*

t 404-926-1089

[Daniel.Duarte@nmrk.com](mailto:Daniel.Duarte@nmrk.com)

**Zach Stokes**

*Director*

t 305-350-0931

[Zach.Stokes@nmrk.com](mailto:Zach.Stokes@nmrk.com)

# NEWMARK

3455 Peachtree Road • Suite 1800  
Atlanta, GA 30326 • t 770-552-2400



[nmrk.com](http://nmrk.com)

# THE CUBES AT LOCUST GROVE

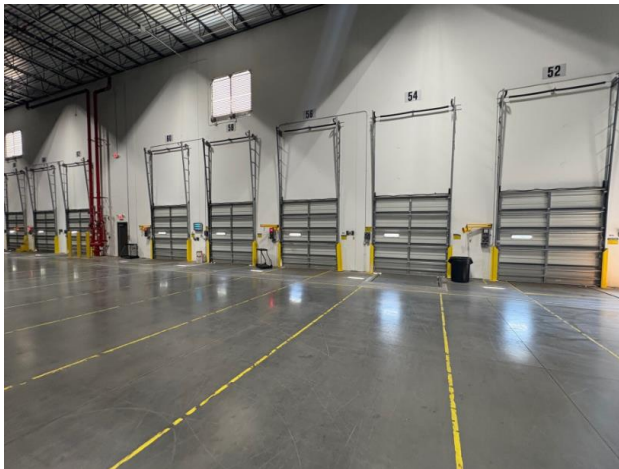
## Building A | 700 Price Drive, Locust Grove, GA 30248

Rental Rate  
**Negotiable**

Occupancy  
**Immediate**

Lease Term Thru  
**01/31/2032**

### SPACE PHOTOS



### SPACE HIGHLIGHTS

**500,000-  
1,00,993 SF**  
AVAILABLE SPACE

**651' x 1,543'**  
BUILDING DEPTH

**Existing Main**  
OFFICE SPACE

**53' L X 57' D**  
COLUMN SPACING

**36'**  
CEILING HEIGHT

**ESFR: K-22**  
SPRINKLERS

**Cross Dock**  
LOADING CONFIGURATION

**LED**  
LIGHTING

**277/480 Volts;  
3,200 amps**  
POWER

**Racking**  
AVAILABLE

### WAREHOUSE SPECS

**146 Total (9' x 10')**  
DOCK DOORS WITH SEALS & 90 DOCK LEVELERS

**4 Total  
(14' x 16')**  
DRIVE-INS

**379**  
AUTO PARKING SPACES

**190'**  
TRUCK COURT DEPTH

**236**  
TRAILER PARKING SPACES

# NEWMARK

The information contained herein has been obtained from sources deemed reliable but has not been verified and no guarantee, warranty or representation, either express or implied, is made with respect to such information. Terms of sale or lease and availability are subject to change or withdrawal without notice.

3455 Peachtree Road NE ■ Suite 1800  
Atlanta, GA 30326 ■ t 770-552-2400

  
nrmk.com

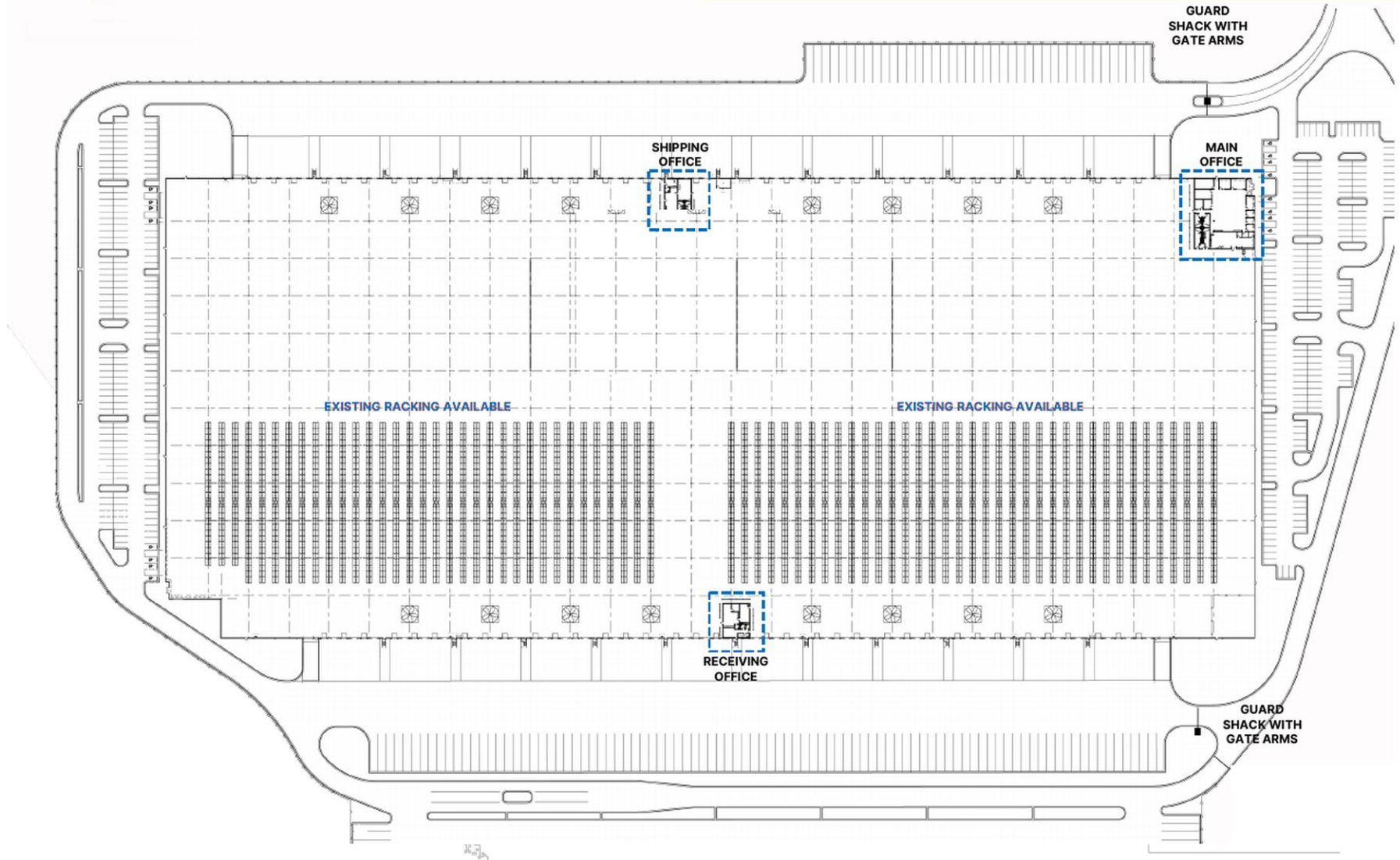
# THE CUBES AT LOCUST GROVE

Building A | 700 Price Drive, Locust Grove, GA 30248

Rental Rate  
**Negotiable**

Occupancy  
**Immediate**

Lease Term Thru  
**01/31/2032**



# THE CUBES AT LOCUST GROVE

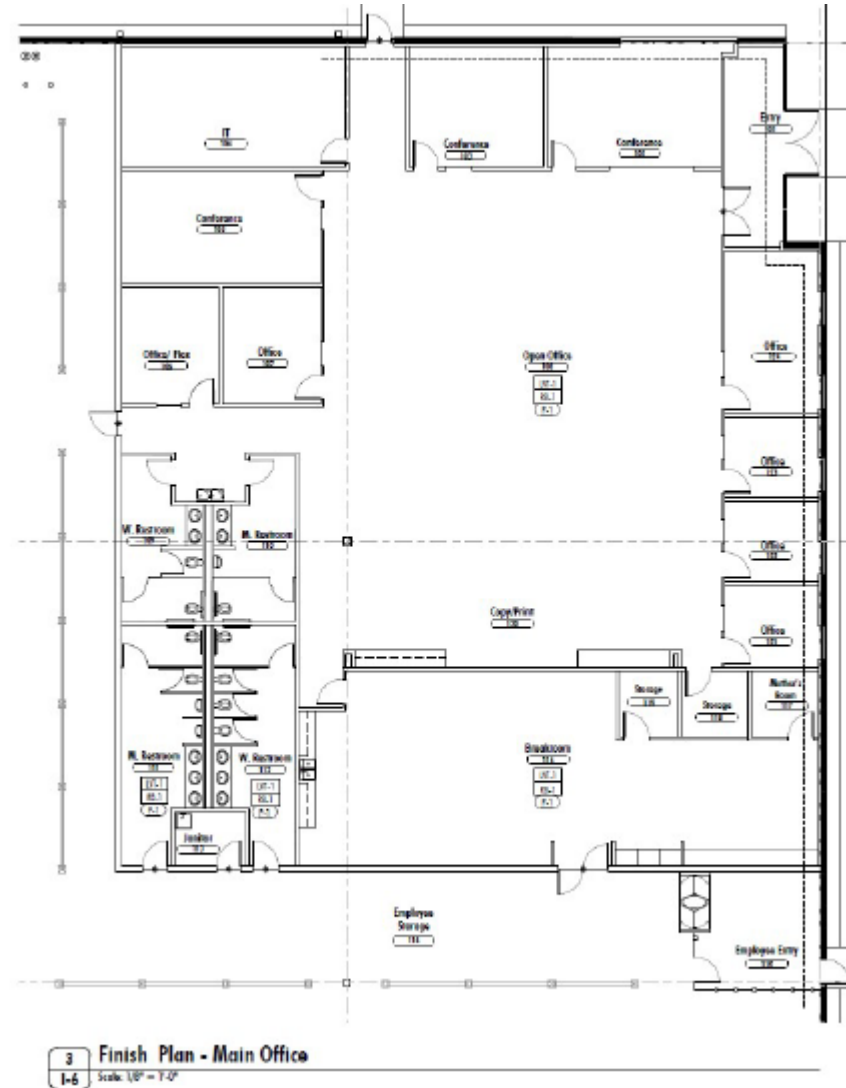
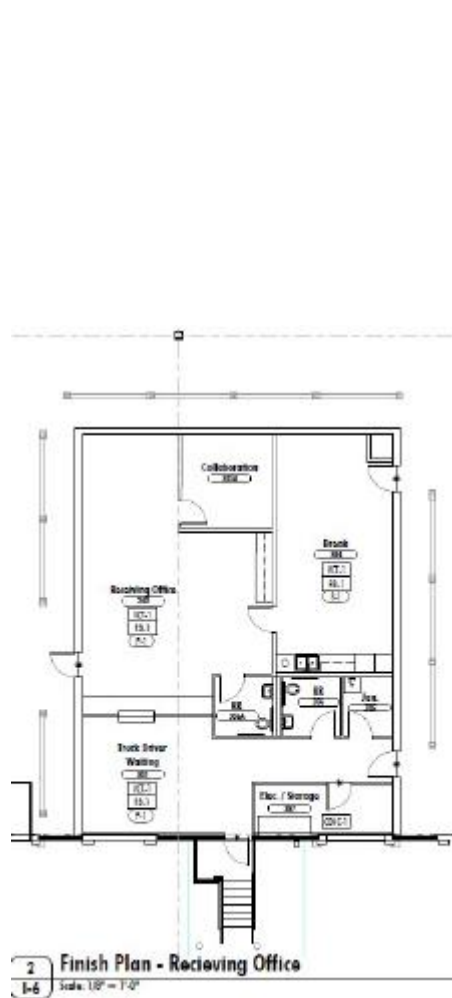
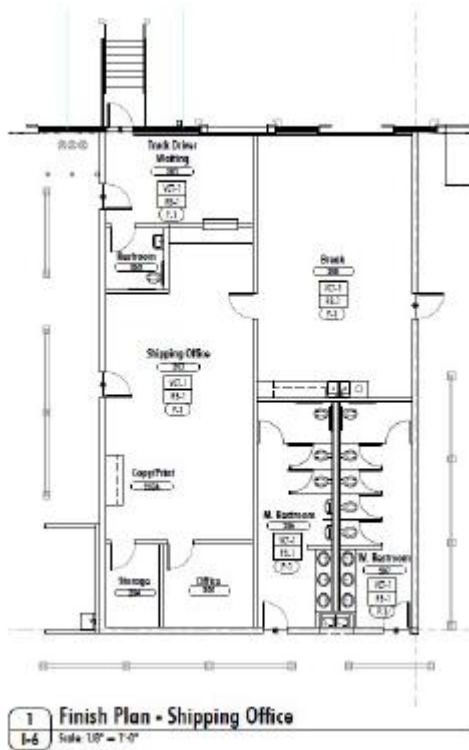
## Building A | 700 Price Drive, Locust Grove, GA 30248

Rental Rate  
**Negotiable**

Occupancy  
**Immediate**

Lease Term Thru  
**01/31/2032**

### FLOOR PLAN – Office Space



# THE CUBES AT LOCUST GROVE

Building A | 700 Price Drive, Locust Grove, GA 30248

Rental Rate  
**Negotiable**

Occupancy  
**Immediate**

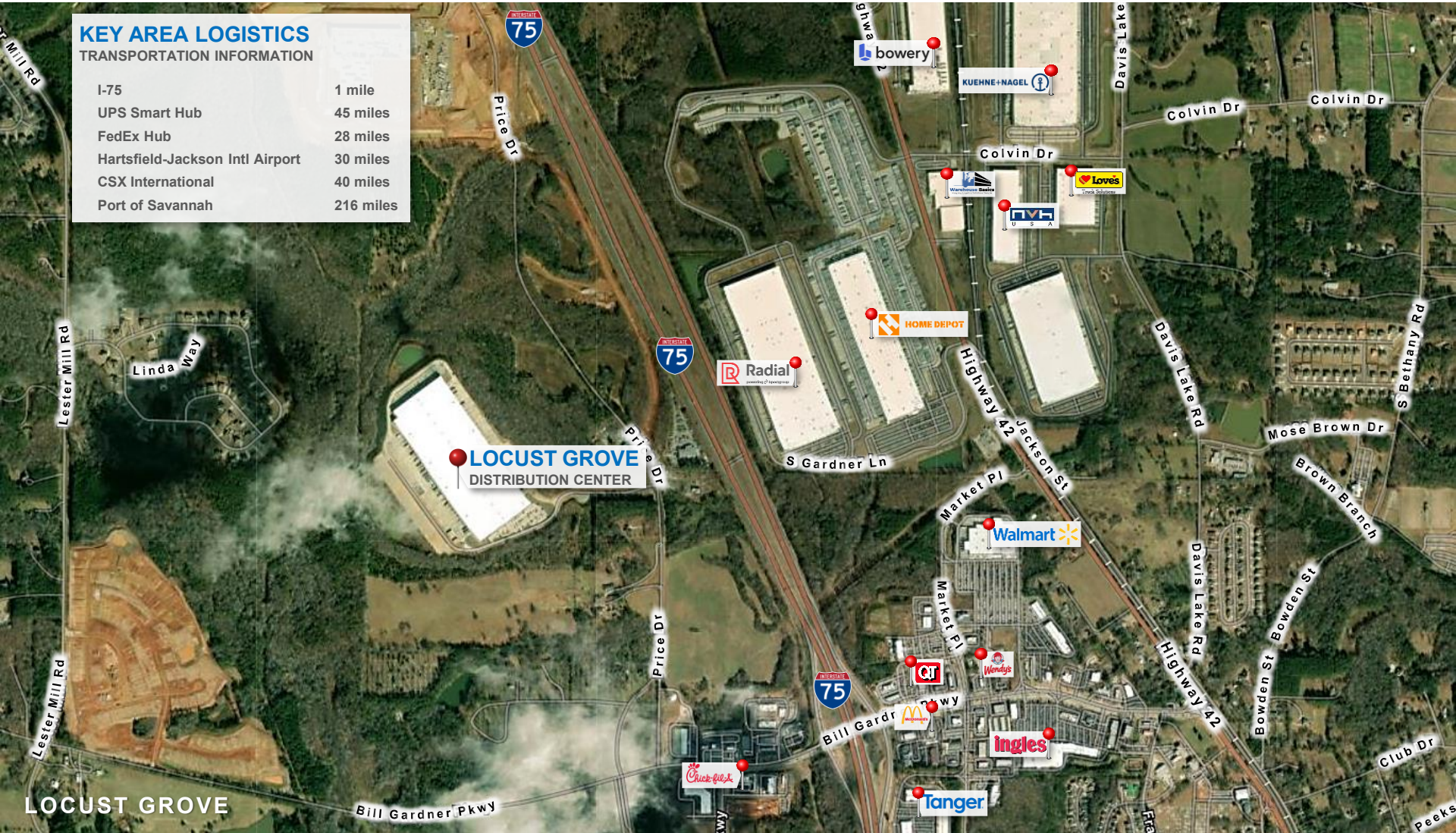
Lease Term Thru  
**01/31/2032**

## MAJOR TENANTS IN AREA MAP

### KEY AREA LOGISTICS

#### TRANSPORTATION INFORMATION

I-75	1 mile
UPS Smart Hub	45 miles
FedEx Hub	28 miles
Hartsfield-Jackson Intl Airport	30 miles
CSX International	40 miles
Port of Savannah	216 miles



# NEWMARK

The information contained herein has been obtained from sources deemed reliable but has not been verified and no guarantee, warranty or representation, either express or implied, is made with respect to such information. Terms of sale or lease and availability are subject to change or withdrawal without notice.

3455 Peachtree Road NE ■ Suite 1800  
Atlanta, GA 30326 ■ t 770-552-2400

nrmk.com

# THE CUBES AT LOCUST GROVE

**Building A**  
*700 Price Drive*  
*Locust Grove, GA 30248*

*For more information:*

**Bert Sanders**

*Vice Chairman*  
t 404-926-1104

[Bert.Sanders@nmrk.com](mailto:Bert.Sanders@nmrk.com)

**Blake Maum**

*Associate*  
t 404-806-2412

[Blake.Maum@nmrk.com](mailto:Blake.Maum@nmrk.com)

**Emery Cresswell**

*Associate Director*  
t 770-552-2493

[Emery.Cresswell@nmrk.com](mailto:Emery.Cresswell@nmrk.com)

**Preston Sanders**

*Associate*  
t 770-552-2472

[Preston.Sanders@nmrk.com](mailto:Preston.Sanders@nmrk.com)

**Daniel Duarte**

*Managing Director*  
t 404-926-1089

[Daniel.Duarte@nmrk.com](mailto:Daniel.Duarte@nmrk.com)

**Zach Stokes**

*Director*  
t 305-350-0931

[Zach.Stokes@nmrk.com](mailto:Zach.Stokes@nmrk.com)

**AVAILABLE  
NOW**

**500,000-1,000,993 SF**  
FOR SUBLEASE

**NEWMARK**

3455 Peachtree Road • Suite 1800  
Atlanta, GA 30326 • t 770-552-2400



[nmrk.com](http://nmrk.com)