

# 1520

N GRAND AVE, SANTA ANA

FOR SALE OR LEASE



**RARE FREESTANDING TURN KEY MEDICAL BUILDING AVAILABLE**

 **LEE &  
ASSOCIATES**  
COMMERCIAL REAL ESTATE SERVICES

 **OC**  
OFFICE GROUP

ALLEN BASSO  
Lic. #01298152  
949.790.3130  
[abasso@leeirvine.com](mailto:abasso@leeirvine.com)

ERIC DARNELL  
Lic. #01888743  
949.460.3681  
[edarnell@leeirvine.com](mailto:edarnell@leeirvine.com)

KYLEE KING  
Lic. #02101275  
949.790.3108  
[kking@leeirvine.com](mailto:kking@leeirvine.com)



LARGE LOBBY



## PROPERTY FEATURES

- ±2,000 - 6,000 SF Freestanding Flexible Use Building
- Near New OC Streetcar
- Building and Monument Signage
- Private Parking Lot with Gate
- Perfect for Variety of Uses, Especially Medical
- Bonus Private 2 Car Garage
- Roof Top Access
- Medical, Retail, Specialty Building
- Easy Access to Major Freeways
- Turn Key Medical Space
- Flexible Sizes For Lease

**LEASE RATE:** \$2.75 PSF NNN

**SALE PRICE:** \$3,300,000 (\$550 PSF)



**ALLEN BASSO**

Lic. #01298152  
949.790.3130

abasso@leeirvine.com



**ERIC DARNELL**

Lic. #01888743  
949.460.3681

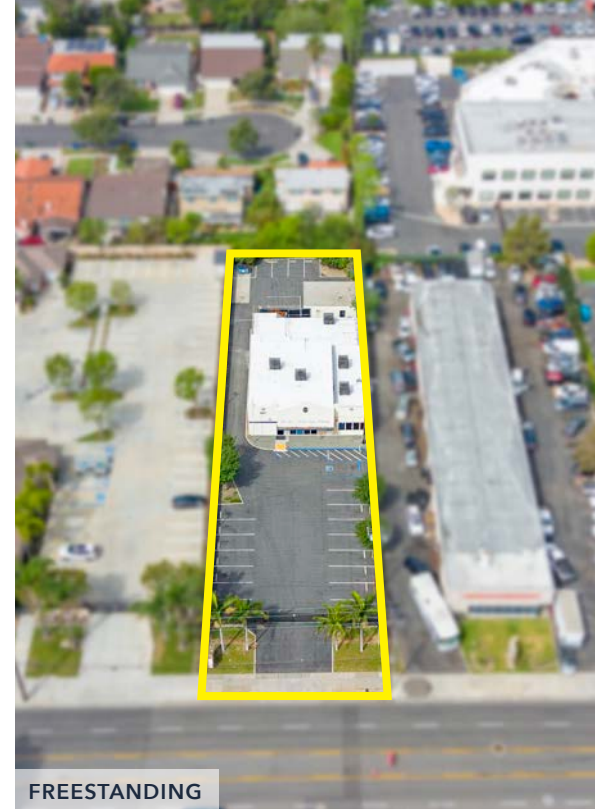
edarnell@leeirvine.com



**KYLEE KING**

Lic. #02101275  
949.790.3108

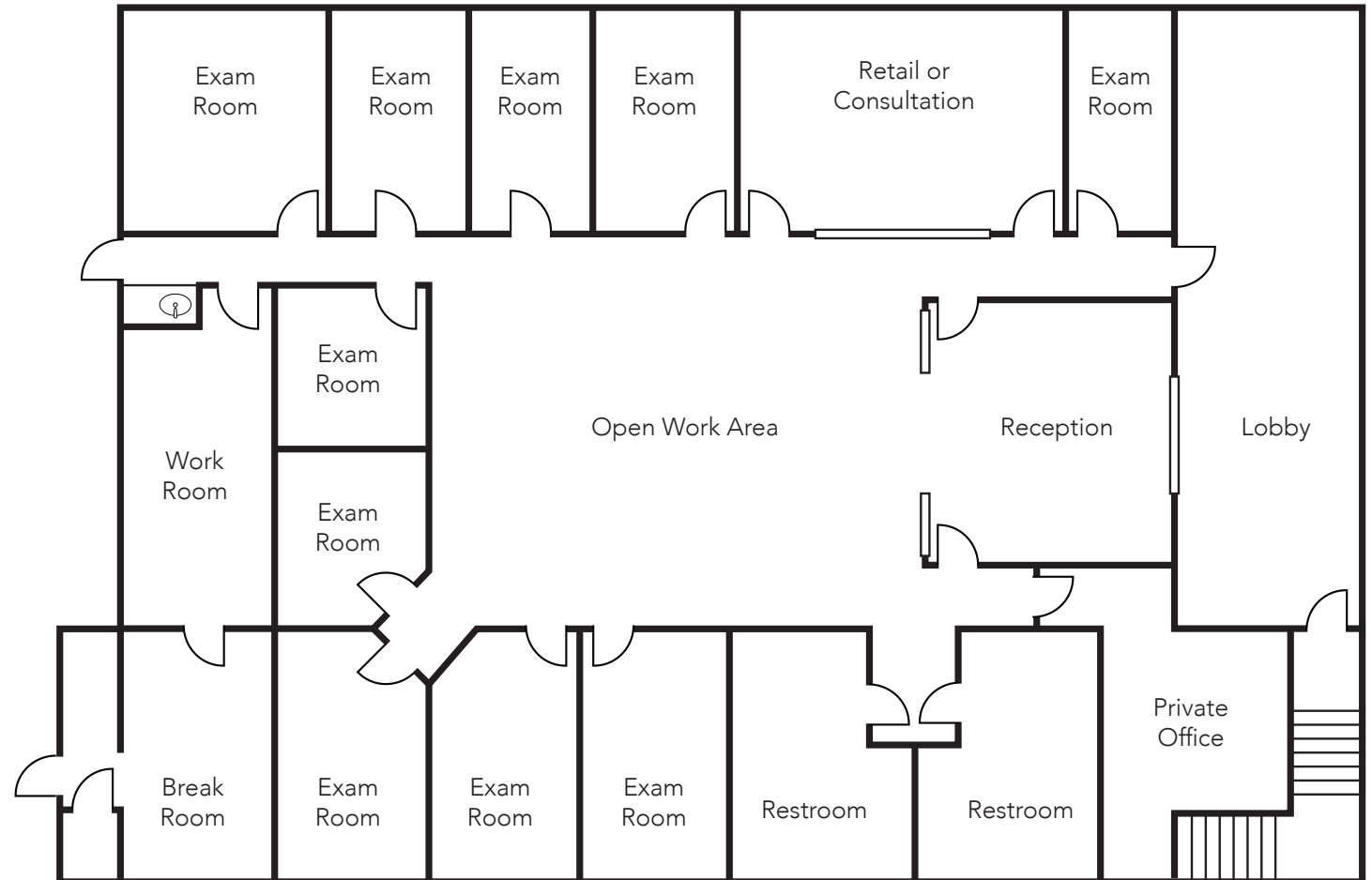
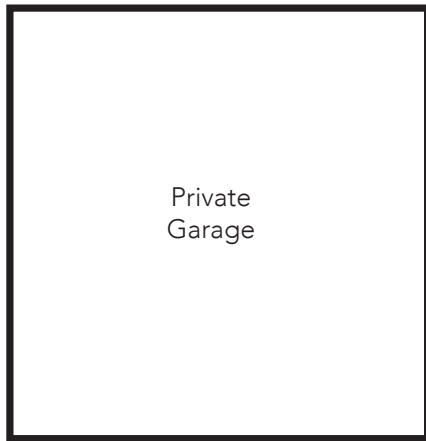
kking@leeirvine.com



FREESTANDING

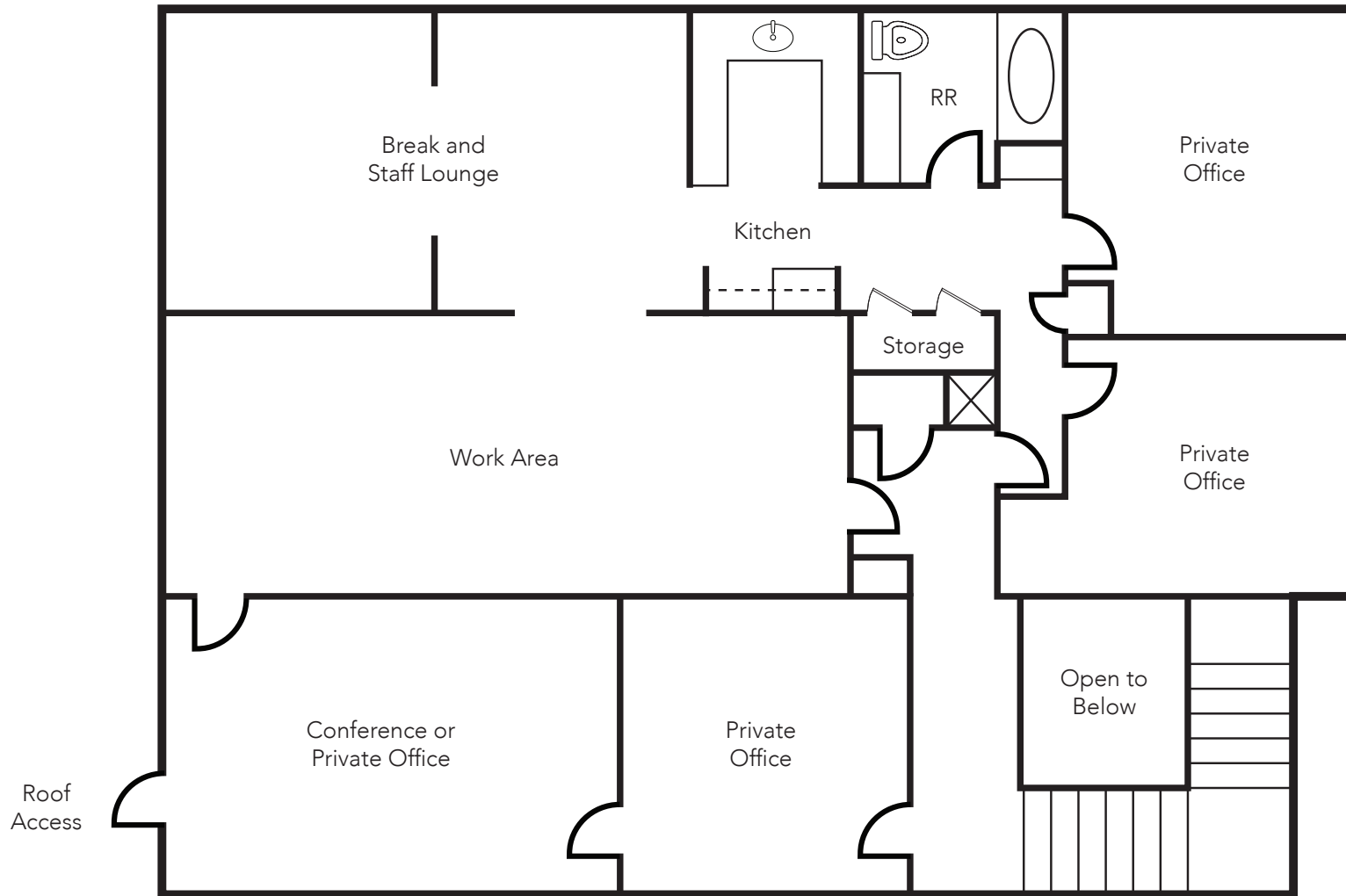


# 1520 N GRAND AVE - 1<sup>ST</sup> FLOOR



±4,000 SF

# 1520 N GRAND AVE - 2<sup>ND</sup> FLOOR



±2,000 SF



ROOF TOP SEATING

**LEE & ASSOCIATES**  
COMMERCIAL REAL ESTATE SERVICES

**OC**  
OFFICE GROUP

The information contained herein has been obtained from the property owner or other third party and is provided to you without verification as to accuracy. We (Lee & Associates, its brokers, employees, agents, principals, officers, directors and affiliates) make no warranty or representation regarding the information, property, or transaction. You and your attorneys, advisors and consultants should conduct your own investigation of the property and transaction.

**ALLEN BASSO**  
Lic. #01298152  
949.790.3130  
abasso@leeirvine.com

**ERIC DARNELL**  
Lic. #01888743  
949.460.3681  
edarnell@leeirvine.com

**KYLEE KING**  
Lic. #02101275  
949.790.3108  
kking@leeirvine.com

# NEARBY AMENITIES



TESLA  
SUPER CHARGERS

1520 N GRAND AVE

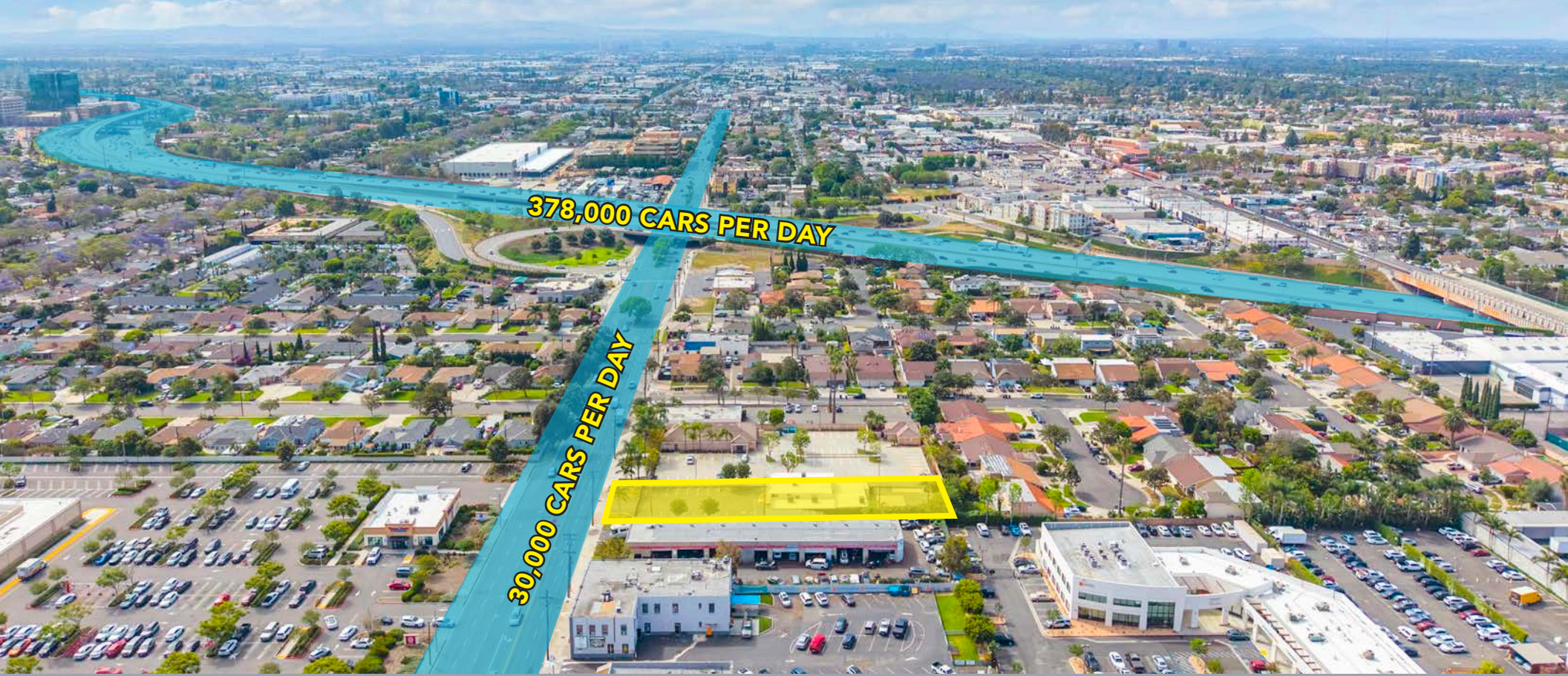


The information contained herein has been obtained from the property owner or other third party and is provided to you without verification as to accuracy. We (Lee & Associates, its brokers, employees, agents, principals, officers, directors and affiliates) make no warranty or representation regarding the information, property, or transaction. You and your attorneys, advisors and consultants should conduct your own investigation of the property and transaction.

**ALLEN BASSO**  
Lic. #01298152  
949.790.3130  
abasso@leeirvine.com

**ERIC DARNELL**  
Lic. #01888743  
949.460.3681  
edarnell@leeirvine.com

**KYLEE KING**  
Lic. #02101275  
949.790.3108  
kking@leeirvine.com



**ALLEN BASSO**

Lic. #01298152

949.790.3130

abasso@leeirvine.com



**ERIC DARNELL**

Lic. #01888743

949.460.3681

edarnell@leeirvine.com



**KYLEE KING**

Lic. #02101275

949.790.3108

kking@leeirvine.com

**1520**  
**N GRAND AVE, SANTA ANA**  
**FOR SALE OR LEASE**

**±6,000 SF MEDICAL OFFICE BUILDING AVAILABLE**



COMMERCIAL REAL ESTATE SERVICES



OFFICE GROUP

The information contained herein has been obtained from the property owner or other third party and is provided to you without verification as to accuracy. We (Lee & Associates, its brokers, employees, agents, principals, officers, directors and affiliates) make no warranty or representation regarding the information, property, or transaction. You and your attorneys, advisors and consultants should conduct your own investigation of the property and transaction.